



HAL
open science

The role of trust in value creation and value appropriation in strategic alliances

Maryem Cherni, Valérie Leroux

► To cite this version:

Maryem Cherni, Valérie Leroux. The role of trust in value creation and value appropriation in strategic alliances. *Managing Trust in strategic alliances*, 2018, 978-1-64113-530. <hal-04364601>

HAL Id: hal-04364601

<https://normandie-univ.hal.science/hal-04364601v1>

Submitted on 16 Jan 2024

HAL is a multi-disciplinary open access archive for the deposit and dissemination of scientific research documents, whether they are published or not. The documents may come from teaching and research institutions in France or abroad, or from public or private research centers.

L'archive ouverte pluridisciplinaire HAL, est destinée au dépôt et à la diffusion de documents scientifiques de niveau recherche, publiés ou non, émanant des établissements d'enseignement et de recherche français ou étrangers, des laboratoires publics ou privés.



HAL Authorization

The Role of Trust in Value Creation and Value Appropriation in Strategic Alliances

Cherni, M., & Leroux, V. (2019). The role of trust in value creation and value appropriation in strategic alliances. *Manag. Trust Strategic Alliances*, 1.

Maryem Cherni, PhD, associate professor of strategy and innovation management at Institut Polytechnique Unilasalle, Transversal Sciences of Engineering and Management Department, Member of INTERACT Research Unit, 19 Rue Pierre Waguet, 60000 Beauvais (France), email: maryem.cherni@unilasalle.fr

Valerie Leroux, PhD, is vice president and professor of Management at Institut Polytechnique Unilasalle, member of INTERACT Research Unit, 19 Rue Pierre Waguet, 60000 Beauvais (France), email: valerie.leroux@unilasalle.fr

Abstract:

The main objective of this chapter is to examine the role of trust in creating value and appropriating it in strategic alliances. We use an integrated theoretical framework in which we mobilize literature on value creation, value appropriation and trust, which are very often studied separately. Then we analyse it in light of a longitudinal case study of a strategic alliance between two companies within the agrifood sector. The results show that trust has a beneficial effect on value creation. More particularly, it reduces the boundaries between partner firms and helps create a positive relational climate that encourages partners to foster value creation. Nevertheless, the role of trust in value appropriation is complicated. Our results show that trust could be harmful for value appropriation in two cases. When trust is deteriorated, partners focus on appropriating private benefits and have a short term perspective. Surprisingly, a lot of trust could encourage partners to adopt an opportunistic behavior in capturing value inappropriately. Trust is a complex, relational and invisible phenomenon. Value creation and appropriation may be mirrors where partners can realize whether trust is in its positive or negative side. In this complex situation, we suggest a co-evolutionary matrix that presents different scenarios according to the evolution of the alliance and the level of trust. This matrix could be a tool to help managers deal with trust in strategic alliances. Finally, lessons learnt from the 10 years strategic alliance case study, implications for both researchers and practitioners, and some research avenues are presented.

Key words: strategic alliances, trust, value creation, value appropriation, contract

INTRODUCTION

This chapter is investigating the impact of trust evolution on value creation and value appropriation between partners over time.

First of all, to define strategic alliances, we adopt a resource-based view approach (Das & Teng, 2000b) and consider them as *ad hoc* arrangements in which partners bring resources and competencies to reach common objectives and create benefits. Within this framework, the notion of value in strategic alliances is closely related to the capacity of partners to join heterogeneous resources and competencies (Peteraf, 1993). Strategic alliances are not only interpreted as an access to resources, but also as “a productive resource for value creation” (Madhok & Tallman, 1998). We therefore consider that alliances are vectors for value creation but also value appropriation.

In the strategic alliances literature, an increasing attention is paid on how firms create greater amount of value (Das & Teng, 2000b; Dyer & Singh, 1998; Gulati, 1998; Kogut, 1988) and how this value is distributed among alliance partners (Adegbesan & Higgins, 2010; Dyer et al., 2008; Jap, 2001; Lavie, 2007; Wagner and Lindemann, 2008). Nevertheless, we noticed that there are two gaps in the literature. The first one is that value creation and value appropriation in strategic alliances are usually addressed separately. Most scholars tend to focus on the value creation side. The second gap is related to the lack of interest in trust issues in the value creation and appropriation literature. Few authors have focused their attention on value appropriation as a source of conflict in interfirm relationships (Jap, 2001). Moreover, scholars have neglected the other side of the equation. Very little attention has been paid to the impact of alliance conditions and the quality of the relationship between partners on value creation or value appropriation over time. It is clear, however, that the capacity of partners to create value

and the manner they appropriate it depend on the collaboration atmosphere, mainly trust, which evolves over time within various stages of alliance development (Das & Kumar, 2007).

Concerning trust, it continues to play an important role and it is still receiving sufficient attention in the strategic alliances literature. This comes from the fact that many scholars have already revealed the positive effect of trust on alliance performance (Dyer & Chu, 2003). Trust allows partners to reduce potential conflicts (Zaheer et al., 1998), facilitates knowledge acquisition (Jiang et al., 2016), and reduces the need to monitor partners' behavior (Jiang et al., 2016).

But what is trust? Trust is defined as one's willingness to rely on others (Rousseau et al., 1998). It refers to the "personal belief that individuals engaged in exchanges will make sincere efforts to uphold their commitment and will not take advantage of the given opportunity" (Sundaramurthy, 2008, p. 89). That is why Rousseau et al. (1998) consider trust not as a behavior but as a psychological state that results in behavior.

If the existence of trust is broadly identified as a key factor of success in the alliance relationship, recent scholars have suggested to take into account "more subtle interaction effects" (Krishnan et al., 2006), apart from the positive relationship between trust and alliance performance. In line with this recent thought and based on the idea of Rousseau et al. (1998) who consider trust not as a behavior but a psychological state that results in behavior, the main objective in this chapter is to explain the variation in value creation and value appropriation behavior among partners when trust increases or decreases over time.

More particularly, in order to address the research gaps mentioned above, this chapter addresses how trust evolution influences partners' behavior when they create value and when they appropriate it. Does positive trust evolution help firms generate greater benefits from the alliance? What could the impact of trust be in appropriating value equally?

We first assert that addressing issues related to value creation and value appropriation with the concept of trust is essential to gain deeper understanding regarding strategic alliances and their performance. Secondly, to illustrate this assertion, we use a longitudinal case study involving two firms in the agrifood sector. We believe that this longitudinal case study methodology is better adapted to our objective because, on the one hand it allows us to consider the fact that value creation, value appropriation and trust respectively evolve during the lifetime of the strategic alliance. On the other hand, this approach is important given the fact that those three factors are implicit and invisible outside the companies' boundaries (Ritala & Tidstrom, 2014).

In the following sections, we first develop the literature review on value, value creation and value appropriation in the context of strategic alliances. Secondly, we discuss the important role of trust through existing literature. We then explain our case study research methodology and present the partners and the ten-year lifecycle of the strategic alliance. We then develop the results and discuss them. Finally, theoretical and managerial implications stemming from the case study analysis are addressed.

1. VALUE CREATION AND VALUE APPROPRIATION IN STRATEGIC ALLIANCES

The aim of this section is to define 'value', its origins and applications in different fields before its extension to the strategic alliances register.

1.1. Definitions

The term “value” is relatively old in academic literature. It has a polysemous and very fragmented meaning. The concept of value is first applied to the company level before its extension to inter-organizational collaborations (Dyer & Singh, 1998).

At the company level, value can be defined from the end-customer perspective as the willingness to pay (Brandenburger & Stuart, 1996). In this sense, it is closely related to the ability of firms to enjoy a sustainable competitive advantage particularly by joining heterogeneous resources and competencies (Peteraf, 1993).

In strategic alliances, the common idea that emerges from the literature is that value is the result of the cooperation between partners. Consequently, the principal driver for partners to collaborate is the possibility of creating greater value, called also “pie” (Jap, 2001; Yan & Wagner, 2017), or “rent” (Madhoc & Tallman, 1998). Nevertheless, the term “value” which is most commonly used in the literature, is still ambiguous, probably because of the difficulty for partners to outline the fruits of their collaboration and to understand their nature, size and ingredients (Jap, 2001). Madhok and Tallman (1998) recognize that the notion of value in strategic alliances is complex since it is related to the intra and interorganizational relationships system of the partners. For these authors, value is defined as the rent that the partners could obtain through their collaboration, but would not be able to gain in other ways. According to them, each alliance has a potential value and a real value. While the former refers to the theoretical result of the combination of the partners resources and competencies, the latter refers to the real rent achieved through cooperation. We therefore address the achieved value. That is to say, in spite of its ambiguity, value is now considered as the keystone of management of inter-firm collaborations. Even more, the potential of a firm to create value is considered as an important selection criteria to establish strategic alliances (Emden et al., 2006). In other words, a firm needs to assess the potential of value creation and appropriation of a project before involving external partners.

The literature distinguishes three levels of value: “ricardian rent”, “quasi-rent” (Peteraf, 1993) and inter-organizational quasi-rent (called also relational quasi-rent or collaboration specific quasi-rent) (Dyer & Singh, 1998; Madhok & Tallman, 1998). (See Table 1 below).

The “Ricardian rent” (Ricardo, 1973) can be explained as follows. To explain the difference between labor and capital, Ricardo considers the rent as the amount paid to the landowner which depends on the scarcity and the fertility of the land. In other words, from Ricardo’s point of view, some types of land may bring more rent than others because they are more fertile and scarce. The concept of ricardian rent was then used by the Resource Based Theory (Barney, 1991), and defined as the benefits which arise from the unique and valuable resources a firm possesses.

The quasi-rent concept is an extension of Ricardo’s approach. According to Marshall (1961) who also considered the temporariness of the good or the resource, Lewin and Phelan (2002) defined the quasi-rent as “that part of the value of the machine that is due to its temporarily restricted supply” (p225). Thus, from a Resource-Based View, the quasi-rent arises from complex and tacit resources difficult to imitate by other firms (Barney, 1991).

The inter-organizational quasi-rent requires the combination of resources and competencies of many partners (Wassmer & Dussauge, 2011) which allow them to collectively generate more value than the sum of value created by each partner (Dyer & Singh, 1998; Madhok & Tallman, 1998). Elsewhere, in line with this view, strategic alliance literature distinguishes common and private benefits (Janssen et al., 2013). Volschenk et al. (2016) use the term common benefit to describe the total value created by the collaboration which also refers to the component of the value appropriated by the partners. It arises from “the collective application of the learning that both firms go through as a consequence of being part of the alliance” (Khanna et al., 1998: 194). However, private benefits refer to the value that a partner

can appropriate unilaterally through the collaborative relationship while benefiting from the access to the other parties' resources and knowledge (Park et al., 2014).

In the following development, we focus on value definitions, value creation in strategic alliances and mechanisms of their creation.

1.2.Value Creation in strategic alliances

In general, as developed above, value creation refers to the firm's activities that could increase the willingness to pay from the end-customer's perspective (Brandenburger & Stuart, 1996; Ritala & Tidstrom, 2014). In the context of strategic alliances, the value would be the result of the cooperation between partners. We know that the value created should not be limited to the financial gain generated by the collaboration. Likewise, it may be strategic, substantive or institutional (Aliouat & Taghzouti, 2007), as well as socio-environmental (Volschenk et al., 2016).

From the point of view of Aliouat & Taghzouti (2007), strategic value is linked to the creation of new business opportunities, substantial value is reflected in the ability of partners to integrate new skills and is related to their absorptive capacity (Cohen and Levinthal, 2000). Other authors call it knowledge value (Dagnino and Padula, 2002; Volschenk et al., 2016), defined as "the growth in the interfirm knowledge stock" (Volschenk et al. 2016, p. 110) created in the collaborative relationship. This knowledge value could be transferred to economic value if it is applied appropriately (Dagnino & Padula, 2007, p42). The institutional value is the gain in legitimacy that the alliance provide for one or both partners.

Other authors suggest that value in strategic alliances can also be socio-environmental (Hatting, 2009; Rolston, 1986; Volschenk et al., 2016). This type of value refers to the

environmental and ecological benefits created by the collaborative relationship. In this sense, it is a society-oriented value, and is not captured by the firms involved in the strategic alliance.

There exist mechanisms that contribute to value creation, called “value establishment norms” (Kaufman, 1987). For this author, the complementary resources and competencies provided by the partners but also solidarity, long-term orientation, information sharing, flexibility, integrity and role planning are mechanisms that create value. Organizational commitment has also been shown to reduce opportunism and conflict in strategic alliances and thus, helps firms to build a beneficial relationship for both partners (Wu & Cavusgil, 2006). Using information from 182 senior executives responsible for strategic alliances in U.S. firms, Wu and Cavusgil (2006) found that organizational commitment can serve as a key mediator and helps them transform their idiosyncratic resources into higher rents for the alliance and for themselves.

1.3. Value Appropriation in strategic alliances

In this section, it is important to note that different concepts are used to describe the value appropriation process. Value capture (Ritala & Tidström, 2014), value sharing (Jap, 2001), “pie splitting” (Adegbesan & Higgins, 2010; Dyer et al., 2008) are also frequently employed in the literature.

Value appropriation generally refers to the mechanisms used to capture or share the value created by partners (Ritala & Tidstrom, 2014) defined previously as the willingness to pay from the end-customer perspective. In the strategic alliance context, it is defined as “the division of wealth generated by the alliance between the two partners, or pie splitting” (Hughes-Morgan & Yao, 2016, p. 186). Put differently, it is the sharing of the interorganizational common benefits arising from the combination of the resources and competencies of the partners. Nevertheless,

it is also important to take into account the ability of the partners to generate private benefits. The appropriation of common value and/or private value could be linked to the trust and the quality of the relationship between partners.

The question of appropriation of the inter-organizational quasi-rent is crucial because the ultimate goal of partners, by establishing strategic alliances, is not only to create value but also to appropriate it (Oxley & Silverman, 2008). Value appropriation is also important to be addressed in strategic alliance research because it could be a source of conflict between partners and a determinant of the failure of collaborative projects. Many reasons could affect the value appropriation process. Opportunistic behavior (Williamson, 1973) could be harmful to the value appropriation atmosphere and lead, therefore, to the failure of the alliance (Das, 2006). According to Jacobides et al. (2006), the problem that could arise in inter-organizational new product development is that not every partner is guaranteed to appropriate a fair share from the joint effort, even if greater value is created. It is possible that gains obtained by one partner of the alliance are transferred into losses in value for the other partner. In this situation, the alliance is called a zero-sum game (Porrini, 2006). On the contrary, the alliance could be a positive-sum game when it allows parties to appropriate the same or parallel value (Ritala & Tidsrom, 2016). In either case, the process of value appropriation and the size of the share depend on a certain number of factors, including the quality of the relationship between the partners.

Research on alliances, and in strategic management in general, increasingly focuses on the drivers of value appropriation and mechanisms that allow the sharing of the inter-organizational quasi-rent called “claiming value norms” (Kaufman, 1987). Overall, control, conflict resolution and the use of power appear as sharing mechanisms of the value created. From the resource-based view, the most mentioned determinants of value sharing are on the upper complementarity of resources (Adegbeson & Higgins, 2011), that is the relative dependence of the firm to the resources of the partner (Pfeffer & Salancik, 1978). The relative

bargaining ability and the superior complementarity are other drivers for value appropriation (Adegbesan & Higgins, 2010). Similarly, Bae & Insead (2004) suggested the concept of “substitutability” which means that if one partner depends more on the resources of the other partner, the dependent partner has less bargaining power (Khanna et al., 1998). This implies that the partner who is in a position of power is able to capture more value than the other (Dyer, Singh & Kale, 2008).

It should also be noted that most scholars explain value appropriation with reference to the resource dependence perspective. According to them, the partner who brings more valuable resources to the alliance will be able to appropriate a greater share of the rent (Pfeffer & Salancik, 1978). Recent scholars find that this perspective is insufficient to explain why some partners have more ability to generate and to appropriate greater value than others. In this vein, Dyer et al. (2008), add that a partner could have a private agenda that is not specifically related to the common objectives of the alliance. Only the common benefits are considered in the distribution, the private benefits are not the subject of negotiations to spill them. For these authors, three perspectives can explain the ability of some firms to achieve private goals and, consequently, to have a greater percentage of the value. First, the related resource perspective which refers to the ability of some partners to combine the resources/knowledge acquired from the alliance to their intrinsic resources. Second, the resource development perspective which refers to the ability to use the resources/knowledge acquired from the alliance to develop them in the future. And third, the structural holes perspective (Burt, 2009) which refers to the ability to combine the resources/knowledge acquired from the alliance with the resources acquired from other relationships in the firm’s network.

Similarly, Hughes-Morgan and Yao (2016) have examined value appropriation in strategic alliances by using a sample of public firms in the pharmaceutical industry. Following the research of Lavie (2007) on alliance portfolio, they mainly focused on how the structural

properties of the alliance network and the positional difference between partners in the network affect value appropriation between partners. The authors found that the firm's position within a social network affects its capabilities which in turn influences its ability to appropriate rents from an alliance. More particularly, they show that firms which have a central position in a network of alliances will be more able to appropriate a larger share of the value created than the partner. They also demonstrate that a firm in a network with more structural holes (Burt, 2002) is more likely to receive diverse information, generating higher weighted returns than the partner. In general, and according to these authors, in the case of dyadic strategic alliances, the value appropriation ability of the firms depends on the connections each one have with other firms in the overall social network.

2. THE ROLE OF TRUST

Trust and its various functions has been widely explored. Some scholars consider it as a part of a larger concept of 'relational capital' (Kale et al., 2000) which also involves commitment, communication, respect and friendship between the parties. Others consider it as an integral concept. In all cases, trust has always been identified as a key component of the success of strategic alliances (Dyer et Singh, 1998; Hamel et al, 1989; Perry et al., 2004). At the opposite, the lack of trust has been identified as a reason of failure (Hakanson, 1993).

In this section, we would like to shed light on the effect that trust could have on the creation and appropriation of value. To do this, we adopt a dynamic and a multi-facet perspective of trust, which is reviewed below.

2.1.Trust as dynamic and a multi-faceted concept

Trust is a multifacet concept (McAllister, 1995; Sundaramurthy, 2008). Using the socio-psychological literature on trust, McAllister (1995) pointed out that the distinction between cognition and affect also exists in interfirm collaborations. The author distinguished between cognition-based trust and affect-based trust as foundations for interpersonal cooperation among managers within organisations. According to this author, cognition-based trust is the belief that one person has about another person on his competencies, responsibilities, reliability and dependability. These are “good reasons” considered by the trustor as “evidence of worthiness” and serve as foundation for trust. The success of past interactions, culture similarity and social similarity in fundamental characteristics such as ethnic background are the antecedent of trusting working relationships between individuals. The second form of trust is affect-based and is built on the emotional bonds between people. This form of trust means that the person is careful of the welfare of the partner, feels that relationships have an intrinsic virtue and also believes that these feelings are reciprocated. Mutual knowledge of each other and the sharing of information make communication easier between partners and allows them to avoid misunderstanding. All of these elements are essential conditions to build and maintain affect-based trust.

In this paragraph we take into consideration the evolution of trust over time. Alliances are a multi-stage, evolutionary and unstable process (Das & Teng, 2000a). Trust therefore varies according to the stage of the alliance development process (Das & Teng, 2002). Scholars (Ariño & De La Torre, 1998; Mayer & Argyres, 2004) suggest that strategic alliances are based at the beginning on formal relationships such as the signature of contracts, the use of governance mechanisms such as market control or hierarchical governance. Over time, the multiple interactions make the parties know each other better and formal relationships are replaced by informal relationships, mainly based on trust. As Rousseau et al. (1998) note, “Repeated interactions [...] strengthen the willingness of trusting parties to rely upon each other” (p. 399).

Consequently, in strategic alliances, trust is dynamic (Gulati & Sytch, 2008) as it derives from a set of multiple interactions which evolve over time (Dyer & Singh, 1998; Rousseau et al., 1998). Trust is a feeling that can be created, maintained, nourished, strengthened or deteriorated through the interactions between partners (Arino et al., 1997). It is useful in reducing partner opportunistic behavior (Zaheer et al., 1998). Therefore, studying the dynamics of the relationship induces us to study the evolution of trust between the parties in a social and a temporal perspective.

Other scholars combine the two approaches – multifacet and evolution- and highlight different forms of trust over time. Most of them (Child, 1998; Kanter, 1994; Lorange & Roos, 1992), highlighted three alliance phases and consequently three kinds of trust. During the formation stage of the alliance, trust is calculative. In this phase, future partners try to find out as much as they can about each other (Child, 1998) and then compare this information to their selection criteria in order to assess the future partner, check the existence of problems of adverse selection or moral hazard (agence theory), and verify the degree of strategic fit between the two future partners (Geringer, 1991). In this phase, the reputation of the future partner is a very important condition to trust it (Ahuja, 2000) because the focal firm could not have all the information needed about it (especially its competencies and resources). During the implementation phase, partners have more information about the capacity of each other, which allows the emergence of a knowledge-based trust between them. Then, as the collaboration evolves, interactions make « bonding » easier (Child, 1998, P. 252) between partners. These bonds are then the basis for the emergence of affect-based trust between partners, which is viewed as a critical condition for the success of the collaboration.

2.2.Trust and value creation & appropriation

It was argued in the literature that the quality of the relationship is important to study because it has an impact on how value is created and appropriated. The emergence of trust offers the right conditions for value creation (Dyer & Singh, 1998; Kale et al, 2000) and also for the process of value appropriation (Kang, 2013). According to Kang (2013), partners who trust each other avoid opportunistic behavior and tend to share the value equally. Trust is a sign of the continuity of a relationship. This means that partners pay more attention to common future benefits, engaging in value creation in a long term perspective.

In channel relationships context, Wagner and Lindemann (2008) found that when the relationship is good, the supplier share is large and sharing is equal. It was also observed that relationship quality also allows greater flexibility of coordination, provides better adaptability and ultimately superior financial performance and the satisfaction of all partners (Ring & Van de Ven, 1994). Based on a study of 300 managers, scientists and engineers, Jap (2001) argued that value appropriation can have a positive or a negative effect on the relationship between partners. For the author, this effect is linked to the type of sharing principles and the characteristics of the resources and of the firm. It was also shown that the value creation positively affects value appropriation, on a project level (Wagner et al., 2010). However, scholars did not pay attention to the effect of the relationship quality on the creation of value and on its appropriation. Based on the literature review above, we consider that trust allows partners to achieve greater amount of value and allows them to divide it appropriately. Otherwise, in the absence of trust, opportunistic behavior prevails. Each partner then tries to have a larger share of the pie and focuses more on its own benefits, without worrying about the future of the collaboration.

Consequently, we find that some questions remain unanswered: how do value creation and value appropriation evolve? What could the impact of trust be on this evolution? How must

one deal with value creation and appropriation in the case of greater trust? How must one deal with value creation and appropriation when trust is deteriorated between partners?

In the following section, we shall develop the case study that enables us to answer these questions and explain the methodology adopted. The names of the companies have been changed in order to secure anonymity of the people interviewed.

3. THE METHODOLOGY: A LONGITUDINAL CASE STUDY

In order to provide empirical insights into our question about the relationship between trust evolution and value creation and appropriation, we conducted a qualitative study. As pointed out by Bryman and Bell (2011) and Saunders et al. (2009), this methodology is suited to our research question since it is complex and relatively unexplored. More particularly, we use a case study analysis (Eisenhardt, 1989; Yin, 2009) defined as “an intensive study for a single unit for the purpose of understanding a larger class of (similar) units” (Gerring, 2004) because this methodology “offers insights that might not be achieved with other approaches” (Rowley, 2002). Thus, we focus on a single strategic collaboration between a cereal producer called PROD (a pseudonym) and a distribution channel called NEGO (a pseudonym).

As all the issues of trust, value creation and value appropriation evolve over time, our research design takes the form of an intensive study of a single longitudinal case involving 7 employees from the PROD company and 3 from the NEGO company. The case describes the evolution of the relationship between the two partners and focuses on the value creation and value appropriation elements of the alliance.

Many authors have underlined the importance of longitudinal qualitative research (Pettigrew, 1990) in the context of strategic alliances (Ariño & De La Torre, 1998; Dekker, 2004). In their research about coopetition – strategic alliances between competitors-, Ritala and

Hurmelinna-Laukkanen (2009) highlighted the need for in-depth case-study research. This methodology could thus be considered appropriate in our study because it allows us to deeply understand the relationship between complex phenomena of trust evolution on the one hand, and value creation, as a collective-level process, and value appropriation, as an individual-level process (Ritala & Tidstrom, 2014), on the other hand. The time dimension is captured in our work through the collection of year-by-year data. As pointed out by Pettigrew (1990), “issues of time are critical and pervasive” (p. 271) because it is a reference to see how value creation and value appropriation evolve and how to explain this within trust evolution.

Moreover, the in-depth case study is especially beneficial for our study because it allows us to collect the point of view of different people involved in the alliance relationships within the two companies. To gather information about the PROD-NEGO alliance, we used multiple sources of information¹ : Documentation, written reports, interviews and *in situ* observation. In order to increase we collected information from both secondary data and interviews. The use of these multiple sources of information increases the construct validity (Yin, 2009) of the case studies. We used detailed documental data such as contracts, mailings, written reports and meeting records. Semi-structured interviews were conducted on site and allowed us to better grasp the partners’ perceptions of the alliance. The interviews focused on internal ties, the quality of the relationship, trust evolution, main events, objectives and value creation and appropriation. All interviews were carried out between 1998 and 2000. A total of ten interviews were conducted. The interviewees were selected according to their daily involvement in the strategic alliance project. The interviews involved, for PROD, the chief executive and the operating manager; and for NEGO, the commercial manager and the area manager (Table 2). The interviews lasted between one hour and a half and two hours. All interviews were tape recorded and then transcribed.

Between the interviews, we still kept in touch with the interviewees for further information, data exchange, etc. These real-time intermediate data, including informal discussions with participants, were very informative. They allowed both to observe micro-developments and contributed to a better understanding of each partner and the respective contexts in which the alliance developed.

3.1.Data collection and analysis

During the course of the empirical study, the recording of the data was systematic and the first investigations were carried out. A relevant organization was needed to code and record the data, to progress in understanding the phenomenon and prepare the final scrutiny. Following the prescriptions of Huberman and Miles (1991), different folders were established:

- the research book that chronologically follows the investigations carried out. Its purpose is to keep track of all the investigations, to record the impressions on the interviews, the presence on the sites and the details observed.

- the folder for the collaborative relationship to allow intra site analysis. It includes all interviews conducted, internal documents concerning the partnership and other non-partnership documents.

- the folder by company that includes the elements specific to its characterization: organization chart, description of activities, markets, all elements that allow to contextualize the relationship.

- the dictionary of themes (topics) that is built in an on-going way, following *in situ* presence and interviews.

The production of meaning was achieved by combining narrative techniques and the results obtained using the various tools proposed by Huberman and Miles (op. cit). Narrative

strategies involve constructing detailed histories from the data and are frequently used in studies of change or evolution processes (Langley, 1999: 695). The description reveals a world that is supposed to exist, to be immutably there. The narrative, on the contrary, reveals a world that is constructed in the very course of a succession of actions that influence each other and are transformed into a progressive sequence. By evolving from superficial observations to underlying structures, the description gradually gives way to explanation.

We also used chronological diagrams, a problem / effect matrix and a site dynamics matrix in order to capture changes in value creation, in its appropriation by partners, in forms and degrees of trust and to identify key driving elements.

To select the facts, we retained the following methodological rule. Only the information verifying the following conditions can appear: at least two different sources must converge and they can not have been contradicted by another source. Nevertheless, we retained the divergent interpretations of a given situation of each of the participants and presented them as such.

3.2.Partner and alliance description

PROD is a Small and Medium Size Enterprise (SME) producing cereals and was initially based in the North of France. Considering global environmental changes (prices, competition), the company decided in the 1990's to produce fruits and vegetables in south of France, where the climate is favorable for this kind of business. In 2002, the company produced carrots, green beans, leeks, corn and sweet corn, had 2000 hectares and 230 employees. This success was partly due to the alliance with NEGO.

NEGO is a well-known large commercial intermediary in France. Because of the economic and climat potential of the southern region and considering the promising activities with PROD, NEGO decided to install a key growth pole in the southwest of France.

The alliance started in 1992 and has lasted ten years, offering the partners the opportunity to cover multiple products and to become major actors in their sectors.

3.3. The PROD-NEGO Alliance life cycle

Negotiations between the two partners began at the end of the 1980's when PROD decided to produce vegetables in the southwest of France. Four important events exposes the chronological evolution of the PROD-NEGO alliance:

- ***1992: the formal beginning of the partnership***

In the late 1980s, PROD decided to diversify crop production in the Southwest of France. Having a problem with its main customers in 1991, PROD contacted NEGO, which was a well-known importer and wholesaler of fruits and vegetables in France looking to expand its commercial presence in the Southwest. First trade contacts were established and successful experience aroused the interest of both actors. In November 1991, the two companies informally agreed on the share of 50% of the production of PROD being commercialized by NEGO. Nevertheless, the first campaign in 1992 did not yield the expected results: trading volumes were lower because of technical difficulties of PROD concerning the packaging. In early 1992, NEGO decides to open a branch in this area.

Despite poor results in 1992, a trust-based relationship developed between the leaders of PROD and the manager of the sales branch of NEGO. The exchanges were frequent (the presence of NEGO on the PROD site also) which allowed them to work together on their common brand and on brands of their respective firms. The packaging teams also worked

together and the firms decided to mutually organize quality monitoring. From frequent contacts between the two partners, other projects emerged, such as crop diversification.

Then PROD experienced significant difficulties with the carrots harvest; disagreements on prices between PROD and its intermediates also emerged. NEGO expressed interest in carrot production but did not want to deal with this intermediary. In December 1992, PROD stopped the relationship with the intermediary.

- ***1993-1994: intensification of the collaboration***

In 1993 PROD was forced to invest rapidly into equipments, NEGO provided it, contacting suppliers and two months after the breakup the "carrots" packing station was established. NEGO had the exclusive marketing of this production in a successfully and satisfactory bilateral compensation package. The relationship between the two structures was excellent and led to the pursuit of projects. Discussions were under way in marketing; NEGO insisted that PROD should increase the production levels while its production was already saturated. Facing the promising development of the marketing of carrot production, PROD took the decision to invest in better equipments for the packaging station. NEGO supported PROD in this investment and a contract was signed. NEGO then worked with PROD on this type of product, without any further contract.

- ***1994-1999: A weakening relationship***

In October 1994, the head of NEGO changed to another position. A new manager was appointed but the leaders of PROD did not perceive the same quality of the relationship. Exchanges became more formal and distant. The producer then searched for a better

understanding of the market. NEGO informed PROD that they still wanted to increase the output. The partners plan the production of leeks in 1996. To do this, another loan agreement was signed in May 1995.

In 1996, a new actor (named DAN here), selling vegetables for British retailers arrived on the production site of PROD. PROD reconnected with this company some time later. After various exchanges, PROD decided to start trading with a new partner for the 1996 season, its goal was to develop the marketing of its products for export. This relationship was encouraged by NEGO, that saw a growth opportunity in European markets. The harvest, which was excellent both in quality and quantity, allowed the growth of sales for all the actors. At that time, the company benefits NEGO with high prices to increase its margin.

In 1997, a catastrophic climate plan led to a considerable fall in the prices of carrots but NEGO maintained its margins despite a negotiation that PROD tried to lead. The same year, the mad cow crisis arose. In its desire to innovate, PROD focused for two years, to make investments to ensure the traceability of its products and increase the performance of its hardware. NEGO, however, considered that these investments were not a priority. PROD had consequently the feeling of making efforts alone and no longer received real support from NEGO in its strategy.

In autumn 1997, a new actor joined the Southwest branch wholesaler for NEGO. It had the task to intensify partnership relations with NEGO. The relation was good between PROD and this new actor and the decision was made to invest in a new packaging line for the cultivation of leek and testing in Portugal for a continuous production. The difficulties were very important, for this last challenge, especially in the field of logistics, and caused economic losses for PROD.

The year of 1998 also marked the development of the first 'quality chains' by supermarkets. Seeking to develop direct relationships with suppliers, without intermediaries,

PROD asked NEGO to develop the marketing of products to these new actors. NEGO undertook some steps but believed that it could be possible to sell the entire production of PROD directly to its customers and there was no need to canvass the plants. The relationship gradually degraded and many meetings were held on disagreements between the partners. The poor performance of the 1999 campaign accelerated the deterioration of the relationship. PROD questioned the benefits of maintaining the alliance with NEGO.

In November of 1999, PROD formulated three requirements to NEGO in order to continue the relationship: transparency on margins, shopping on site, direct billing to PROD supermarkets and hypermarkets (GMS). NEGO accepted the first two conditions, but excluded the third.

- ***May 2000: End of the alliance***

In May 2000, PROD addressed a letter to NEGO to terminate the partnership.

Over these 10 years of collaboration, many changes occurred in the collaborative relationship. The broad information about the evolution of resources, value created, and the main events in the collaboration between PROD and NEGO are outlined in the overview Table 3 and were analyzed using the tools of Huberman & Miles (1991) as explained above.

4. RESULTS

The PROD-NEGO alliance reveals interesting results, for both practitioners and researchers. Some of our results confirm the literature, such as those concerning dynamic resources (dynamic capabilities) or the influence of trust on value creation. Results concerning the role of trust on value appropriation are counterintuitive, but rich and original.

In figure 1, we present a synthetic schema about what we observed in the PROD-NEGO strategic alliance over the 10 years.

Above all, we chose to divide the important events in six points that are elemental keys to explain the role of trust in this particular case. These events are ordered by chronological sequence. With these events we want to illustrate three important aspects:

1. The building of trust between partners as a dynamic process.
2. The impact of trust evolution on the behavior of partners in the value creation and value appropriation processes.
3. The different factors that could affect the construction of trust.

4.1.Trust evolution in the PROD-NEGO Alliance

- *Phase ex-ante: The trust construction stage*

The case study confirms the importance of the decision to select a partner in order to form a strategic alliance and the importance of prior trust to reduce uncertainty. This result is coherent with findings about the importance of cognitive-based trust at the beginning stage of an interfirm collaboration (Child, 1998). It also corroborates findings on the role of prior relationships, familiarity, reputation of partners in the building of trust (Gulati & Sytch, 2008) and consequently in reducing uncertainty (Mitsubishi, 2002). In addition to the favorable context and the motivation for PROD to establish the strategic alliance, the role of the intermediary (called Paul) and the reputation of the future partner were crucial in building trust, mainly cognition-based trust.

“Paul reassured us about the competencies of this company” (PROD Manager)

In this stage, PROD accepted to start the alliance without signing a written agreement.

“... no written agreement between us. Words are what count above all ... words, trust are characteristics of our fruits and vegetables business” (NEGO Chief Executive 1)

The partners trusted each other. They accepted to combine their efforts, using their complementary resources and competences. PROD had a large capacity of production (hundreds of hectares) and industrial materials. NEGO had good sales networking and a good reputation (the first seller of fruits and vegetables in France).

“ ...we both had strong relationship which explained all our efforts, investments, our station constraints ... ” (PROD Manager)

Although at the time the collaboration is formed, PROD was a small firm, the balance of power between the partners was at equilibrium. The partners were determined to cooperate, had the same perception about the future and the long term horizon. This, in turn, positively impinged on the trust building process.

“...we have the same vision of the business development and the same willingness to move ahead” (NEGO Manager)

- ***Stage of harmonious relationship:***

In this stage, strong interpersonal relationships based on mutual trust are well established between the head of PROD and the manager of NEGO.

For PROD, which is a family firm, trust is not only important inside the family, but also outside the family firm.

“The future looked so bright for us, the market is there ... and because Jacques was ambitious, he was moving ahead” (NEGO Chief Executive 1)

Although NEGGO is not a family firm, which means that it does not have the same norms of interactions as PROD, the manager of NEGGO was inclined to act in a way that would satisfy the trust of the partner and consider PROD as a friend:

“I did not see him as a simple supplier, but as a producer friend. We worked together in a family spirit, which is totally different from our traditional suppliers. Over time, a warmer relationship has been built” (NEGGO Chief Executive 1)

In this period, results were satisfactory at a global level and the perspectives appeared to be very promising. The asymmetry of culture and size was hidden by the positive behavior of the partners. The external environment was so favorable that they decided to establish new investments (carrots and potatoes) even though they encountered technical difficulties resulting in levels of production that were lower than expected. The affect-based trust was a key driver. Nevertheless, both parties decided, for the first time, to sign written contracts.

- ***Phase of trust destruction***

PROD manager found the collaboration hard to manage after the departure of the precedent NEGGO manager with whom he had very good interpersonal relationships.

“...we found ourselves in a vacuum in which nobody was in front of us on the other side”
(PROD Manager)

The relationship was at a fragile stage as was hard for the PROD firm to find someone as trustful as the precedent NEGGO manager. A problem of communication occurred then. The affect-based trust was clearly undermined.

“as soon as a relationship is no longer good between two persons, the communication become bad, things don't go so well” (NEGGO Manager)

For the NEGOT managers, the problem comes from the PROD family who don't care about the production anymore. NEGOT focused more on production problems than on relational aspects. That's why they decided to hire someone to manage the collaboration with PROD.

“the current was no longer flowing between us ... they didn't care about the production and operational managers were out of communication... I was hired to intensify the relationships with PROD, and to be more attentive to them ...” (NEGOT Manager)

The mistrust problem is compounded by a problem of transparency. PROD managers were not satisfied with the behavior of NEGOT managers who behaved opportunistically by taking higher margins than promised. This problem became a source of concern for PROD who doubted of the sincerity of the partner and decided to control his behavior. Cognitive-based trust seems to become all the more important.

Failure in the relationships affects not only the communication between the partners but also the strategic goals of the alliance. PROD replies by opportunistic behavior and decided to focus more on private benefits such as its business growth strategies but less on production.

- ***Phase of adjustment***

To deal with this problem, and aware of the importance of interpersonal contacts for PROD, NEGOT tried to recreate a positive relationship. In this context, Marc was hired to renew the relationships with PROD and to re-create a stable atmosphere. His arrival positively impacted the relationship: PROD was reassured again and the partners were more committed. Trust was re-established

“...good working relationships have been established, knowing that I appreciated Marc and that was reciprocal” (New NEGOT chief executive)

Despite the tremendous efforts of Marc to re-establish a long term relationship, positive effects however lasted only for a short period.

“That went quite well at the beginning. The contact with them was good. It worked very well the first years” (New NEGOC Chief Executive)

The relationship entered a phase of stress in which PROD formulated their dissatisfaction with the results of the partnership and tried to impose specific requirements: transparency on margins, a commercial service to develop within PROD, direct billing with hypermarkets and supermarkets. The decision was clear for PROD, NEGOC should accept this requirement or dissolve the relationship. NEGOC accepted the first two requests but not the third one.

“I took these problems as a personal insult. I considered that I was invested a lot in this partnership. The fact that PROD questioned my work [...] is very hard to accept, it is certainly a bit frustrating, since I was the one who negotiated with these hypermarkets and supermarkets” (New NEGOC chief executive)

The relationships were conflictual between the parties, interpersonal relations clearly deteriorated, up to a stage of no return.

- ***Phase of dissolution***

PROD decided to leave the relationship. The environment was worsened by the recruitment by PROD of Sylvain who was commercial within NEGOC. The latter took this decision very badly.

The personal relationship and trust between PROD-NEGOC were considered so person related that even after a start of dissolution, PROD was bonded by the person that used to conduct the cooperation. Even though PROD knew this move of hiring him could affect the further relationship, PROD chose to take this action.

4.2. Dynamic of value creation as a result of combination of resources

Partners have intrinsic resources that generate ricardian rents to each of them as defined by Peteraf (1993). For the strategic alliance, they brought complementary resources. PROD had a large capacity of production (hundreds of hectares) and industrial materials. NEGO had a good sales networking and a good reputation (the first seller of fruits and vegetables in France). This resource combination generated an inter-organizational quasi-rent for both partners.

The case study shows that it is possible to analyse value creation at two levels.

First, at the organizational level, each partner is able to capitalize resources and competencies through the collaboration such as cognitive, organizational or material resources, or a larger scope of competencies. Thanks to this partnership, PROD increased its production area by 50%, diversified its production, and was ISO certified - it became one of the first market players in fresh vegetables. NEGO started to operate at the international scale and provided its customers with quality fresh produce all year round. Table 3 depicts the evolution of resources and skills developed and capitalized by the two partners. This dynamic aspect has been studied in the literature with regard to the dynamic capabilities approach (Teece et al., 1997).

Second, at the inter-organizational level, the two partners combine their resources and competences in production and marketing to gradually penetrate new markets and gain a considerable place in the distribution. That is the inter-organizational quasi-rent, which is nourished by collaboration over time.

According to this point of view, the creation of value - both in terms of Ricardian rent or quasi- interorganizational rent- is also dynamic. Moreover, we noted that the creation of value, whether ricardian or interorganizational, is for a large part non anticipable *ex ante* but emergent as explained below (for example ISO 9002 for PROD or export experience for NEGO).

4.3.Trust: a tool for orchestrating the duality of value creation and value appropriation

It is worth remarking that in the case of the alliance between PROD and NEGÓ, the role of trust was very important in orchestrating value creation and value appropriation processes.

4.3.1. Trust as a catalyst for value creation

The PROD-NEGÓ case study highlights the role of trust as a catalyst that reinforces the capacity of combined resources to create value. When partners trust each other, they tend to join efforts in using their resources and competences and consequently effectively, and consequently creating value.

Trust and value created evolve over time. The case study shows that these two aspects could strengthen mutually. The period during which there has been the greatest development of value creation is the period where the partners trusted each other and behaved in a manner that is beneficial to the joint effort, as the reflection about the brands and the packaging conducted in the period between 1992 and 1994 illustrates.

This demonstrates that through the daily performance of the partners, the results they achieve, through their respective and common interpretation of their environments and the opportunities they detect, collaboration even nurtures value. New values – ricardian or interorganizational - are created; they reinforce both affect and cognitive-based trust between partners and encourage them to invest even more in the relationship. We observe a positive feedback loop.

Even more surprisingly, we could conjecture that even in the absence of expected value creation - which could lead to partner dissatisfaction and disengagement, or the possible failure

of cooperation (Geringer, Herbet, 1991; Ingham, 1990; Inkpen, Ross, 2001) – trust, especially affect-based trust, leads to the maintenance of the relationship. This is what appeared in 1992 with an insufficient harvest quantitatively and qualitatively, and the following two years on another production. This did not undermine the trust between the partners who decided to jointly invest to overcome these difficulties and acquire more confirmed skills and more appropriate technical tools.

4.3.2. Appropriation of value: the complex role of trust

With respect to value appropriation, the results are somewhat more subtle. The case study leads us to discuss several assumptions.

Firm characteristics asymmetry

When we observe the results, we could firstly suggest that firm characteristics could be seen as an important parameter that affect value appropriation of each partner. PROD is a SME, and also a family owned firm. PROD managers are very committed to the alliance and have a long term perspective. NEGO is a large company and have important experience in alliances and considerable commercial resources. This asymmetry could be a negative aspect when it comes to value appropriation because it could create a situation in which NEGO benefits more than PROD in rent appropriation. This result is coherent with those of Hughes-Morgan and Yao (2016) who found that asymmetric situations could lead to asymmetric gains associated with the alliance. In addition to differences in size, the two partners did not have the same commercial capital (Hughes-Morgan and Yao, 2016). NEGO disposed of higher level of commercial resources and thus it was easier for it to better appropriate additional rents. This situation was

negatively perceived by the managers of PROD who considered that NEGO took higher margins than it was said. At this time, affect-based trust was weak; cognitive-based trust had just started to be undermined.

The bright and dark side of trust

Although there is extensive support in prior research for the overall beneficial effect of trust (e.g., Das & Teng, 2000; Dyer & Chu, 2003; Zaheer et al., 1998), the PROD-NEGO case study shows that the impact of trust on value appropriation is complicated and depends on other factors.

Firstly, we notice that when both partners trust each other, they do not pay a lot of attention about how to appropriate the value created. Even when the results are less than expected, partners maintain their commitment to the alliance and continue to consider new avenues of cooperation. In other words, they reason in a long term perspective. Conversely, when partners do not trust each other, they give more attention to how to share the pie in the short term. In this case, partners tend to use contracts, rules and standards set in the beginning of the collaboration to know how they will share value. Then, when trust deteriorates the main concern is not how to create value but how to appropriate it. More importantly, in this situation, the presence of tension between partners leads each one to focus on its own private benefits and to neglect the realization of inter-organizational quasi-rent. The conflictual relationship could thus increase the likelihood of opportunism. Khanna et al. (1998) and Hughes-Morgan and Yao (2016) suggested that partners might pursue private benefits unilaterally by picking up skills from the partner to apply them in their specific activities. We observed that PROD developed this kind of behavior when trust was deteriorated. At the end of the alliance, PROD picked up skills from the partner by hiring its sales manager.

PROD and NEGO's opportunistic behavior in appropriating value could also be interpreted in the lens of the dark side of trust developed by scholars such as Gargiulo and Ertug (2006) and Jiang et al. (2016). If trust is usually considered as beneficial for the alliance, this thesis should be reconsidered. Recent studies point out that trust, even if it is positive, could be sometimes harmful for relationships. Jiang et al. (2016) argued that relational capital, mainly trust, could reduce monitoring of the partners behaviors which could lead them to develop opportunistic behavior and exploit the alliance to appropriate more value than their counterparts. Applied to interpersonal relationships, Skinner et al. (2014) argued that sometimes trust can be problematic and could become a "poisoned chalice" for one of the parties involved.

Based on this literature, old and new, we could suggest that there is an optimal level of trust beyond which the dark side of trust appears. This finding contributes to the trust and strategic alliances literature in suggesting the negative effects of high trust level in interfirm relationships. Only few empirical research have succeeded in proving it. Molina-Morales et al. (2011) have shown the existing of inverted U-Shaped relationship between trust and innovation performance of firms imbedded in innovation networks. The authors' empirical findings show the existence of « a tipping-point of trust beyond which additional increases in trust may bring diminishing benefits » (p. 119).

Thirdly, in the PROD-NEGO alliance, we have also observed the impact of external actors coming in or out of the partnership on the quality of the relationship between the two partners. This study's finding demonstrates that interfirm trust is not only complex (Rousseau et al., 1998), but also a fragile process. In other words, emergent and not predictable factors, such as the arrival of a new commercial representative in the PROD-NEGO alliance, can destabilish the trust construction process between the two partners.

Contracts as a mechanism to reduce the adverse effect of trust

This result also underlines the importance of the role of contracts in the appropriation of value process not only when trust is deteriorated between the partners, but also when it reaches a critical level. When trust is deteriorated, using contracts or other means of control makes partners ensure that the sharing of the value created meets their expectations. Using contracts by PROD and NEGO to share value, when the relational climate is not favorable, shows that they seek to avoid potential opportunistic behavior (Ahuja, 2000). When the level of trust is high, the contract may dampen the willingness of the trustee to behave opportunistically by exploiting opportunities for its own. This result confirms some scholars' finding according to which the contract is a control mechanism of collaborative relationship which is complement to relational governance mechanism (Poppo & Zenger, 2002).

5. SUMMARY OF THE MAIN FINDINGS, LESSON LEARNED AND IMPLICATIONS

As a reminder, the ambition of this chapter was to better understand the effect of trust on value creation and value appropriation in strategic alliances. To do this, we firstly combined these three different but interconnected fields that have been often studied separately: value creation, value appropriation and trust. We tried to provide some suggestions towards semantic clarity of value, value creation, value appropriation and trust. Then, we used a longitudinal case study analysis that helped us to suggest that the ultimate objective of a strategic alliance is to create value, called inter-organizational (or relational) quasi-rent as well as achieving intrinsic objectives by seeking to create its private benefits. More specifically, the case study analysis

enabled us to learn lessons for researchers and practitioners on how to improve their management of strategic alliance through the management of trust.

What lessons can be learnt from the PROD-NEGO alliance?

The PROD-NEGO case study analysis offers interesting and insightful results about trust management in strategic alliances.

The first lesson from the case study is that processes of value creation and value appropriation in strategic alliances are intertwined. We consider them as two sides of the same coin. As pointed out by Ritala and Tidstrom (2014), the two phenomena are interconnected. One might add that value creation and value appropriation also evolve according to the evolution of trust. Throughout the evolution of the alliance, partners have different objectives and different states of mind depending on the level and evolution of trust. Evidently, trust globally reduces the boundaries between the partner firms and helps creating a positive relational climate that encourages partners to foster value creation and to reduce conflicts in value appropriation.

The second finding is that trust is an important relational mechanism allowing coordination between parties. It is above all a strategic asset. When partners succeed to build and maintain it, trust helps them establishing and managing their strategic alliance. Contrarily, when they no longer trust each other, they might end up collaborating. So, trust should be considered as a precious asset and for that reason it should be managed specifically because, in addition, it is complex, fragile and insufficient.

Trust is important under certain circumstances and may be contingent on other factors such as the characteristics of the partners, but also the characteristics of the strategic alliances such as the objective of the alliance, the resources and competencies that each partner brings to

the alliance, and the external environment. To be beneficial for them, it is crucial for firms to manage it. An optimal level of trust ensuring a certain equilibrium with the intrinsic features of the partners, the alliance-related features and the environment must be found.

Trust is also a relational concern (Schoorman et al., 2007), it is intangible and is not observable (Skinner et al., 2014). In the context of strategic alliances, value creation and value appropriation processes could be considered as « risk-taking acts » which means that they are moments of exchanges between parties (Skinner et al., 2014) where the real face of interfirm trust is shown. Thus, value creation and appropriation, including processes, contents and manners, are mirrors where partners could realize whether trust is in its positive or negative side.

If previous research has long highlighted the positive effect of trust on alliance performance, we suggested in this chapter that trust should be managed cautiously. Clearly, trust is an important catalyst and lubricant that makes partners create value quickly and efficiently. Nevertheless, when it comes to appropriation of the value created, trust can be positive or negative. Trust is a double-edged sword. It can have bright side when it positively affects value appropriation at the same time a dark side because it encourages parties to exploit it by adopting opportunistic behavior to achieve intrinsic goals.

In addition, we learn that trust is necessary for strategic alliance coordination, but not sufficient. As pointed out by previous research, although it presents a cost for the partners, it is also important to have formal monitoring mechanisms such as contracts. Trust is important but should be completed by a formal agreement which could be useful in case of trust destruction or in case where one of the partners try to breach trust to fulfill private benefits inappropriately. Consequently, it is important for the strategic alliance to develop a relationship in which both parties 'abide by certain rules which serve as the 'guidelines of exchange processes'. As mentioned by Zahra et al. (2006), managers need to « trust by verify ». In other words, managers

have to learn to objectively and cautiously establish a level of trust which could be beneficial for all parties.

For future research, it is essential to think about how to manage trust. There are many unexplored lands to be discovered regarding trust. Who to trust, how much and under what circumstances is trust beneficial for the alliance? How much must one invest in a relationship? This idea has already been highlighted by Molina-Morales et al. (2011): “one ought to know whom to trust, how much to trust them, and with respect to what matters” (Molina-Morales et al., 2011, p. 122), but not yet studied empirically.

Moreover, a number of researchers adopted a process point of view to explain the development of alliances over time (Das & Teng, 2002; Ring & Van de Ven, 1994) and consequently stressed the importance of the evolution of phenomena such as learning (Das & Teng, 2007), cost and governance choices (White, 2005), and trust (Nielsen, 2011).

In line with these scholars, we believe that the dynamics of value creation and value appropriation and trust within the alliance development process is an important subject that future research could examine for the effective management of trust in strategic alliances. We propose the co-evolutionary matrix presented in figure 2. The matrix is built taking into account two dimensions: the alliance development process and the level of trust.

In the formation stage, partners’ aim is to know each other and to construct a cognitive-based trust based on the resources and competencies that each one possesses. If partners already know each other, trust is already established thanks to their previous relationships. Nevertheless, a very high level of trust could exist at the beginning of the alliance. In this case, the role of contracts is prominent to manage the relationship between partners.

During the operation stage, the best way is to reach a good balance between affect-based trust and cognitive-based trust. At this stage, a low level of trust could be a sign of communication problems between partners or could mean that the collaboration has difficulties

to start effectively. Conversely, a very high level of trust could indicate a high level of commitment, an excellent relationship between the partners, and a high level of strategic and organizational fit. Nevertheless, the risk in this case is that one partner could take advantage of the situation and try to pursue its private interests and benefits.

In the outcome stage, the decision to pursue the collaborative relationship or to terminate it depends largely upon the level of trust. At this stage, trust could be an indicator of the partners' satisfaction about their alliance, and consequently could be interpreted a subjective indicator of the performance of the alliance. If, at this stage, partners maintain a good level of trust, two outcomes are possible: to put an end to the alliance if the alliance achieve its goals, or to continue when it is necessary to restructure the alliance if the goals are not yet met (Das, 2007). It is also possible that at this stage, the trust level is very high. This can be evaluated by partners' satisfaction about each other's implication and about the results of the alliance. This situation is positive but has to be managed cautiously because of the risk of opportunistic behavior. The troublesome scenario to be anticipated is when, at the outcome stage, trust is deteriorated and results are unsatisfactory. In this case, partners must decide, most of the time, to put an end to their alliance.

Finally, the co-evolutionary matrix of trust could be a relevant tool for trust management in strategic alliances and allows to express partner behavior and attitudes within the evolution of trust on the one hand and alliance stages on the other hand.

NOTES:

¹ Yin (1994) lists six sources of information for in-depth case studies: documentation, records/archives, interviewing, direct observation, participant observation, and simulation.

ACKNOWLEDGEMENTS:

We thank Loïc Sauvée and Sylvie Lupton for their corrections and helpful comments.

REFERENCES:

Adegbesan, J. A., & Higgins, M. J. (2010). The intra-Alliance division of value created through collaboration. *Strategic Management Journal*, 32(2), 187-211.

Adegbesan, J. A., & Higgins, M. J. (2011). On the origins of competitive advantage: Strategic factor markets and heterogeneous resource complementarity. *Academy of Management Review*, 34(3), 463-475.

Ahuja, G. (2000). The Duality of Collaboration: Inducement and Opportunities in the Formation of Interfirm Linkages. *Strategic Management Journal*, 21, special issue, 317-343.

Aliouat, B., & Taghzouti, A. (2007). "Strategic Alliances and value creation: Profitability, competitive advantage or legitimacy: Toward a cross analysis of complementary models". *Proceedings of the XVIth Strategic Management International Conference*. Montreal, Canada, 6-9 Juin.

Arino, A., & De La Torre, J. (1998). Learning from failure: Towards an evolutionary model of collaborative ventures. *Organization science*, 9(3), 306-325.

Arinõ, A., Abramov M., Skorobogatykh I., & Vià J. (1997). Partner selection and trust building in West-European joint ventures: a western perspectives. *International Studies of Management and Organization*, 27(1), 19-37.

Bae, J., & Insead, M. G. (2004). Partner substitutability, alliance network structure, and firm profitability in the telecommunications industry. *Academy of Management Journal*, 47(6), 843-859.

- Baum, J. A., Calabrese T., & Silverman B. (2000). Don't go it alone: alliance network composition and startups' performance in Canadian biotechnology. *Strategic Management Journal*, 21, 267–294.
- Barney, J. B. (1991). Firm Resources and Sustained Competitive Advantage. *Journal of management*. 17(1), 11–120.
- Barthélemy J. (2006). “Value creation and appropriation in a partnership: The case of Disney-Pixar”. *Revue Française de Gestion*, 32(164), 141-155.
- Blois, K. (1998). Don't all firms have relationships?. *Journal of Business & Industrial Marketing*, 13(3), 256-270.
- Brandenburger, A. M., & Stuart, H. W. (1996). Value-based business strategy. *Journal of economics & management strategy*, 5(1), 5-24.
- Bryman, A., & Bell, E. (2015). *Business research methods*. Oxford University Press, USA.
- Burt, R. S. (2002). The social capital of structural holes. *The new economic sociology: Developments in an emerging field*, 148-190.
- Child, J. (1998). Trust and international strategic alliances: The case of Sino-foreign joint ventures. *Trust within and between organizations*, 214272.
- Cohen, W. M., & Levinthal, D. A. (2000). Absorptive capacity: A new perspective on learning and innovation. In *Strategic Learning in a Knowledge economy* (pp. 39-67).
- Dagnino, G. B., & Padula, G. (2007). Untangling the rise of coopetition: The intrusion of competition in a cooperative game structure. *International studies of Management and Organization*, 37(2), 32-52
- Das, T. K., & Teng, B. S. (2000a). Instabilities of strategic alliances: an internal tensions perspective. *Organization Science*, 11(1), 77–101.
- Das, T. K., & Teng, B. S. (2000b). A resource-based theory of strategic alliances. *Journal of Management*, 26(1), 31-61.

- Das, T. K., & Teng, B. S. (2001). Trust, Control, and Risk in Strategic Alliances: An Integrated Framework. *Organization Studies*, 22(2), 251-283.
- Das, T. K., & Teng, B. S. (2002). The dynamics of alliance conditions in the alliance development process. *Journal of management studies*, 39(5), 725-746.
- Das, T. K. (2006). Strategic alliance temporalities and partner opportunism. *British Journal of Management*, 17(1), 1-21.
- Das, T. K., & Kumar, R. (2007). Learning dynamics in the alliance development process. *Management Decision*, 45(4), 684-707.
- Deck, M. & Strom, M. (2002). Model of co-development emerges. *Research Technology Management*, 45(3), 47-54.
- Dekker, H. C. (2004). Control of inter-organizational relationships: evidence on appropriation concerns and coordination requirements. *Accounting, Organizations and Society*, 29(1), 27-49.
- Dyer, J. H. (1997). Effective interfirm collaboration: How firms minimize transaction costs and maximize transaction value. *Strategic Management Journal*, 18(7), 535-556.
- Dyer, J. H., & Chu, W. (2003). The role of trustworthiness in reducing transaction costs and improving performance: Empirical evidence from the United States, Japan, and Korea. *Organization science*, 14(1), 57-68.
- Dyer, J. H., & Singh, H. (1998). The relational view: cooperative strategy and sources of interorganizational competitive advantage. *Academy of Management Review*, 23(4), 660-679.
- Dyer, J. H., Singh H., & Kale P. (2008). Splitting the pie: Rent distribution in alliances and networks. *Managerial and Decision Economics*, 29(2-3), 137-148.
- Eisenhardt, K. M. (1989). Building theories from case study research. *Academy of Management Review*, 14(2): 532-550.

- Emden, Z., Calantone R. J., & Droge, C. (2006). Collaborating for new product development: Selecting the partner with maximum potential to create value. *The Journal of Product Innovation Management*, 23(4), 330-341.
- Flyvbjerg, B. (2006). Five misunderstandings about case-study research. *Qualitative Inquiry*, 12(2): 219-245
- Gargiulo, M., & Ertug, G. (2006). *The dark side of trust. Handbook of trust research* (pp. 165-186). Cheltenham, UK/Northampton, MA : Elgar.
- Geringer, J. M. (1991). Strategic determinants of partner selection criteria in international joint ventures. *Journal of international business studies*, 22(1), 41-62.
- Geringer, J. M., & Herbet, L. (1991). Measuring performance of international JV. *Journal of International Business Studies*, 22(2), 249-263.
- Gerring, J. M. (2004). What is a case study and what is it good for?. *American Political Science Review*, 98(2), 341-354.
- Gulati, R. (1998). Alliances and networks. *Strategic management journal*, 19(4), 293-317.
- Gulati, R., & Sytch, M. (2008). The dynamics of trust. *Academy of Management Review*, 33(1), 276-278.
- Hakanson, L. (1993). Managing cooperative research and development: partner selection and contract design. *R&D Management*, 23(4), 273-285.
- Hamel, G., Doz, Y., & Prahalad, C. K. (1989). Collaborate with your competitors - and win. *Harvard Business Review*, 67(1), 133-139.
- Hatting, J. (2009). Environmental ethics. Climate change and arctic sustainable development: Scientific, social, cultural and educational challenges. *UNESCO International Experts Meeting*, Monaco, 3-6 March 2009.
- Huberman, A .M., & Miles, B. (1991). *“Qualitative data analysis: new methods.”* De Boeck Université. Bruxelles.

Hughes-Morgan, M., & Yao, B. E. (2016). Rent appropriation in strategic alliances: a study of technical alliances in pharmaceutical industry. *Long Range Planning*, 49(2), 186-195.

Ingham, M. (1990). "Strategic approaches of international alliances". *Gestion 2000*, 5, 97-129.

Inkpen, A. C., & Ross, J. (2001). Why do some strategic alliances persist beyond their useful life?. *California Management Review*, 44(1), 132-148.

Janssen, G., de Man, A., & Quak, H. (2013). Fairness and value appropriation in logistics alliances: a case-study approach. In *Proceedings of the 24th POMS Annual Meeting, Denver, Colorado, USA*.

Janssen, G. R., De Man, A., & Quak, H. (2013). Fairness and value appropriation in logistics alliances: a case-study approach. *Proceedings of the Annual Conference of the Production and Operations Management Society*, Denver, CO, USA.

Jacobides, M. G., Knudsen, T., & Augier, M. (2006). Benefiting from innovation: Value creation, value appropriation and the role of industry architectures. *Research policy*, 35(8), 1200-1221.

Jap, S.D. (2001). Pie sharing in complex collaboration Contexts. *Journal of Marketing Research*, 38(1), 86-99.

Jiang, X., Bao, Y., Xie, Y., & Gao, S. (2016). Partner trustworthiness, knowledge flow in strategic alliances, and firm competitiveness: A contingency perspective. *Journal of Business Research*, 69(2), 804-814.

Kale, P., Singh, H., & Perlmutter, H. (2000). Learning and protection of proprietary assets in strategic alliances: Building relational capital. *Strategic Management Journal*, 21, 217-37.

Kang, J. (2013). Value creation and appropriation in strategic alliances: Roles of resources characteristics and structural position in alliance network. *Business and Management Review*, 3(2), 01-09.

- Kanter, R. M. (1994). Collaborative advantage: the art of alliances. *Harvard Business Review*, 72(4), 96-108.
- Kaufmann, P. J. (1987). Commercial exchange relationships and the negotiator's dilemma. *Negotiation Journal*, 3(1), 73-80.
- Khanna, T., Gulati, R., & Nohria, N. (1998). The dynamics of learning alliances: Competition, cooperation and relative scope. *Strategic Management Journal*, 19(3), 193–210.
- Kramer, M. R. (2011). Creating Shared Value. *Harvard Business Review*, Jan-Feb.
- Kogut, B. (1988). Joint ventures: Theoretical and empirical perspectives, *Strategic Management Journal*, 9(4), 319-332.
- Krishnan, R., Martin, X., & Noorderhaven, N. G. (2006). When does trust matter to alliance performance?. *Academy of Management Journal*, 49(5), 894-917.
- Langley, A. (1999). Strategies for theorizing from process data. *Academy of Management review*, 24(4), 691-710.
- Lavi, D. (2007). Alliance portfolio and firm performance: A study of value creation and appropriation in the U.S. Software industry. *Strategic Management Journal*, 28(12), 1187-1212.
- Lepak, D. P., Smith, K. G., & Taylor, M. S. (2007). Value creation and value capture: A multilevel perspectives. *Academy of Management Review*, 32(1), 180-194.
- Lewin, P., & Phelan, S. E. (2002). Rent and resources: A market process perspective. In N. J. Foss, & P. G. Klein (Eds.), *Entrepreneurship and the firm: Austrian perspectives on economic organization*. Edward Elgar Publishing.
- Lorange, P., Roos, J., & Brønn, P. S. (1992). Building successful strategic alliances. *Long Range Planning*, 25(6), 10-17.
- Madhok, A., & Tallman, S. B. (1998). Resources, Transactions and Rents: Managing value through interfirm collaborative relationships. *Organization Science*, 9(3), 326-339.

Marshall, A. (1961). *Principles of Economics: An introductory volume*. London and New York, Macmillan.

Mayer, K. J., & Argyres, N. S. (2004). Learning to contract: Evidence from the personal computer industry. *Organization Science*, 15(4), 394-410.

McAllister, D. J. (1995). Affect-and cognition-based trust as foundations for interpersonal cooperation in organizations. *Academy of management journal*, 38(1), 24-59.

Mintzberg, H., & Waters, J. A. (1985). Of Strategies, Deliberate and Emergent. *Strategic Management Journal*, 6(3), 257-72.

Molina-Morales, F. X., Martínez-Fernández, M. T., & Torlò, V. J. (2011). The dark side of trust: The benefits, costs and optimal levels of trust for innovation performance. *Long Range Planning*, 44(2), 118-133.

Nielsen, B. B. (2011). Trust in strategic alliances: Toward a co-evolutionary research model. *Journal of Trust Research*, 1(2), 159-176.

Oxley, J. E., & Silverman, B. S. (2008). Inter-Firm Alliances: A New Institutional Economics Approach, in E. Brousseau, & J. M. Glachand (Eds.), *New Institutional Economics: A Guidebook* (pp. 209-234). Cambridge University Press, New York, USA.

Papadakis, V.M., Lioukas, S. & Chambers, D. (1998). Strategic decision-making processes: the role of management and context. *Strategic Management Journal*, 19(2), 115-147.

Park, B. J. R., Srivastava, M. K., & Gnyawali, D. R. (2014). Walking the tight rope of coepetition: Impact of competition and cooperation intensities and balance on firm innovation performance. *Industrial Marketing Management*, 43(2), 210-221.

Perry, M. L., Sengupta, S., Krapfel, R. (2004). Effectiveness of horizontal strategic alliances in technologically uncertain environments: are trust and commitment enough?, *Journal of Business Research*, 57(9), 951-956.

- Peteraf, M. (1993). The Cornerstones of Competitive Advantage: a Resource Based View. *Strategic Management Journal*, 14(3), 179-191.
- Pettigrew, A.M. (1990). Longitudinal field research on change: Theory and practice. *Organization Science*, 1(3), 267-292
- Pfeffer, J., & Salancik, G. R. (1997). *The External Control of Organizations: A Resource Dependence Perspective*. Harper & Row, New York, USA.
- Porrini, P. (2006). Alliances: Value creation or zero sum game? *Proceedings of the Academy of Management conference* (Vol. 2006, No. 1, pp. B1-B6). Briarcliff Manor, New York, USA.
- Poppo, L., & Zenger, T. (2002). Do formal contracts and relational governance function as substitutes or complements? *Strategic Management Journal*, 23(8), 707–25.
- Ricardo, D. (1973). *The principles of political economy and taxation*. London, The Guernsey Press.
- Ring, P. S., & Van de Ven, A. H. (1994). Developmental processes of cooperative interorganizational relationships. *Academy of Management Review*, 19(1), 90-118.
- Ritala, P., & Tidström, A. (2014). Untangling the value-creation and value-appropriation elements of cooperation strategy: A longitudinal analysis on the firm and relational levels. *Scandinavian Journal of Management*, 30(4), 498-515.
- Rolston, H. (1986). *Philosophy gone wild: essays in environmental ethics*. Amherst, NY: Prometheus.
- Rousseau, D. M., Sitkin, S. B., Burt, R. S., & Camerer, C. (1998). Not so different after all: A cross-discipline view of trust. *Academy of management review*, 23(3), 393-404.
- Rowley, J. (2002). Using case studies in research. *Management Research News*, 25(1), 16-27.
- Saunders, M., Lewis, P., & Thornhill, A. (2009). *Research Methods for Business Students*, Pearson Education, London.

- Sundaramurthy, C. (2008). Sustaining trust within family businesses. *Family Business Review*, 21(1), 89-102.
- Schoorman, F. D., Mayer, R.C., & Davis, J. H. (2007). An integrative model of organizational trust: past, present, and future. *Academy of Management Review*, 32(2), 344-354.
- Skinner, D., Dietz, G., & Weibel, A. (2014). The dark side of trust: When trust becomes a 'poisoned chalice'. *Organization*, 21(2), 206-224.
- Volschenk, J., Ungerer, M., & Smit, E. (2016). Creation and appropriation of socio-environmental value in coopetition. *Industrial Marketing Management*, 57, 109-118.
- Wagner, S. M., & Lindemann, E. (2008). Determinants of value sharing in channel relationships. *Journal of Business & Industrial Marketing*, 23(8), 544-553.
- Wagner, S. M., Eggert, A., & Lindemann, E. (2010). Creating and appropriating value in collaborative relationships. *Journal of business research*, 63(8), 840-848.
- Wassmer, U., & Dussauge, P. (2011). Value creation in alliance portfolios: The benefits and costs of network resource interdependencies. *European Management Review*, 8(1), 47-64.
- White, S. (2005). Cooperation costs, governance choice and alliance evolution. *Journal of Management Studies*, 42(7), 1383-1412.
- Williamson, O. E. (1973). Markets and hierarchies: some elementary considerations. *The American economic review*, 63(2), 316-325.
- Wu, F., & Cavusgil, S. T. (2006). Organizational learning, commitment, and joint value creation in interfirm relationships. *Journal of Business Research*, 59(1), 81-89
- Yan, T., & Wagner, S. M. (2017). Do what and with whom? Value creation and appropriation in inter-organizational new product development projects. *International Journal of Production Economics*, 191, 1-14.
- Yin, R. K. (1984). Case study research: Design and methods. Sage Publications, Beverly Hills, Canada.

Yin, R. K. (2009). *Case study research: Design and Methods*. SAGE publications. Thousand oaks.

Zaheer, A., McEvily B., & Perrone V. (1998). Does trust matter? Exploring the effects of interorganizational and interpersonal trust on performance. *Organization Science*, 9(2), 141-159.

Zahra, S. A., Yavuz, R. I., & Ucbasaran, D. (2006). How much do you trust me? The dark side of relational trust in new business creation in established companies. *Entrepreneurship theory and practice*, 30(4), 541-559.

	Categories of value	Authors	Description	Examples
Organizational value	Ricardian rent	Peteraf, 1993;	Arises from the valuable resources and competencies of the firm	Profit maximization to satisfy stakeholders; Total shareholder return; arket value added)
	Quasi-rent	Teece, Pisano & Shuen, 1997; Peteraf, 1993); Barney, 1991	Arises from complex and tacit resources/competencies of the firm	New product or process development; Managerial innovation
Interorganisational quasi-rent (relational quasi-rent)	Economic value	Kramer & Porter (2011).	Tangible value	Profit, gain efficiency, market expansion, Cash Flow Return On Investment
	Strategic value		the creation of new business opportunities	e-business developement
	Knowledge value	Dagnino & Padula, 2007	The growth of the interfirm knowledge stock	Collaboration know how and experience
	Socio-environmental value	Volschenk et al., 2016	Ecological value and benefits that accrue to society. A public value	Environmental improvements (carbon dioxide emissions, road maintenance reduction costs, ...)

Table 1: Value related terminology and examples

	PROD		NEGO		Total
Person Interviewed	Chief executive	Project Manager	Chief executive	Commercial Project manager	
Number of interviews	4	3	2	1	10

Table 2- Number of interviews within the 2 companies

	1992		1993-1994		1994-1995		1996		1997-1999		2000
	PROD	NEGO	PROD	NEGO	PROD	NEGO	PROD	NEGO	PROD	NEGO	
External factors							Foreign wholesaler		1997 and 1999 : bad weather		End of the collaboration
Resources	Several hundreds of hectares	Customers portfolio	Production competencies	Market competencies Regional branch	Rise of Area and machinery	New marketing responsible	Rise of area and machinery Production competences	Market competences	2000 hectares Business expertise Certification ISO 9002	1997 : new responsible	
Common goals	Sale of 50% of carrots production of PROD by NEGO Quality monitoring		Increasing sales volumes Marketing and quality reflection		Jointly sailing and development of product Culture of leek		Product development Internationalization		Marketing of products to new customers Ensure continuous production: investment in Portugal		
Specific goals	<ul style="list-style-type: none"> Increase the volume of transactions Increase his packing station 	Expand its customer portfolio	Invest in carrots packaging equipment Innovation	Innovation			Identify the selling price of its products	International development	Increasing equipment performance Traceability of products. New leek packaging Developping partnership with mass-market retailing	Increasing volume of transactions Direct and exclusive relationship with customers	
Value created	Technical difficulties hinder the creation of value : quantity product less than expected		Co-financing of carrots packhouses Increasing volume Notoriety		Growing of volumes Notoriety		Growing of volumes New 3 years contract		1997 : volumes < previsions 1998 : logistics problems Low value		
Shared value	Packaging of its products	Deployment of its shipping activity	Profit margin Business expertise	Profit margin Business expertise	Profit margin Business expertise	Profit margin Business expertise	Profit margin Prospect securing	Profit margin Improving product quality	Low product quantity => Low profit	Maintain of margins	
Relational quality	A trustful relationship developed between the 2 partners Frequent exchanges Family spirit		Favorable relationship Excellent relational dynamic Same vision of the agriculture world development		Relationship weakened following the departure of NEGO branch Southwest head and a arrival of new manager Strictly professional		Relational distance between the 2 partners		1997 : better relations with the new NEGO representative 1998 : amplification of the relational degradation		

	"A climate and warm relationship" (NEGO sales manager)		relationship: less frequent and more formal exchanges Respect for rules and standards previously established		Divergent strategies	Feeling of treason among NEGO
--	--	--	---	--	----------------------	-------------------------------

Table 3: Evolution of the VEG/NEGO alliance between 1992 and 2000

Trust level

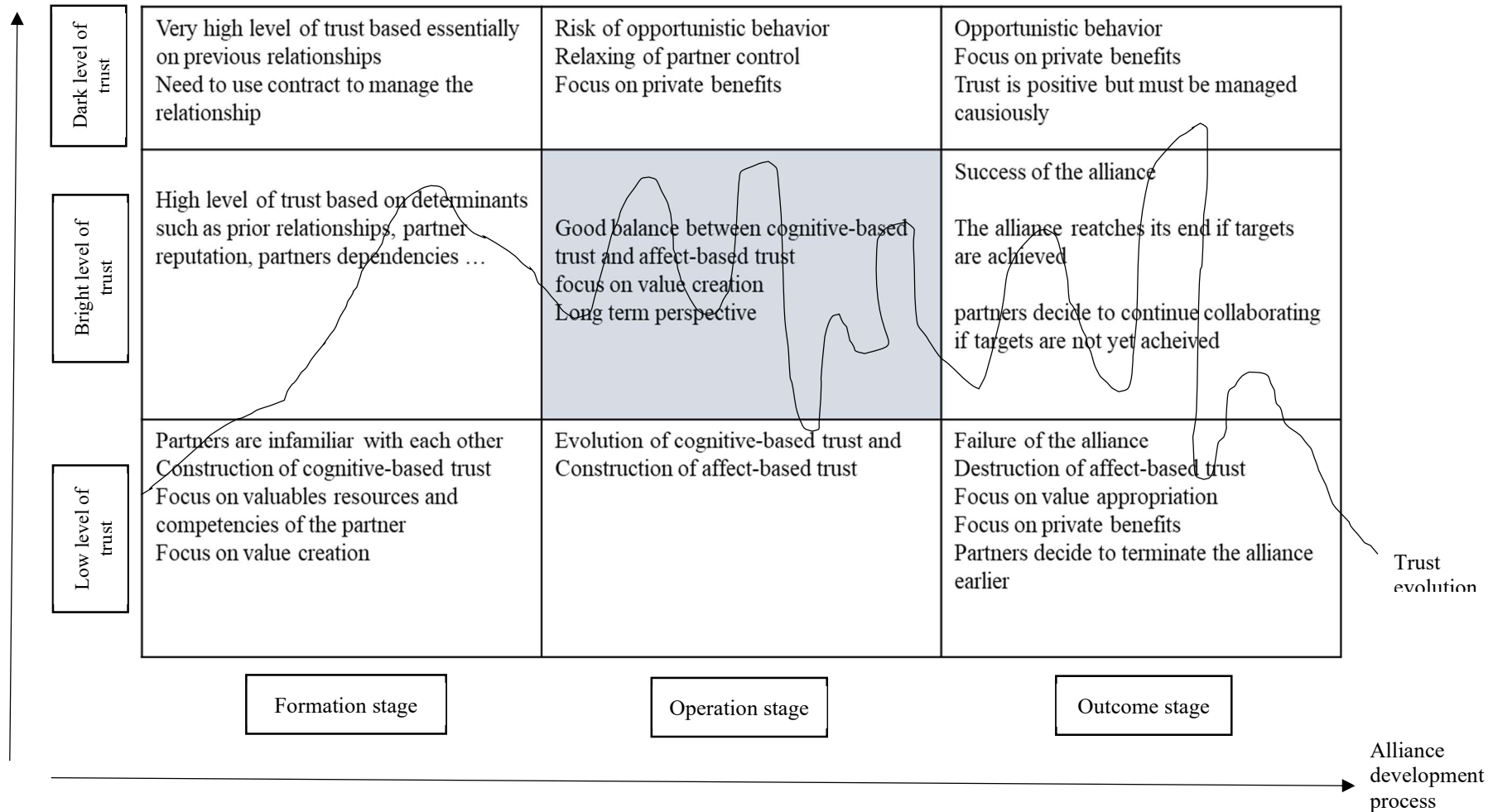


Table 4: Co-evolution matrix of Trust – Value Creation/Appropriation within the alliance development process

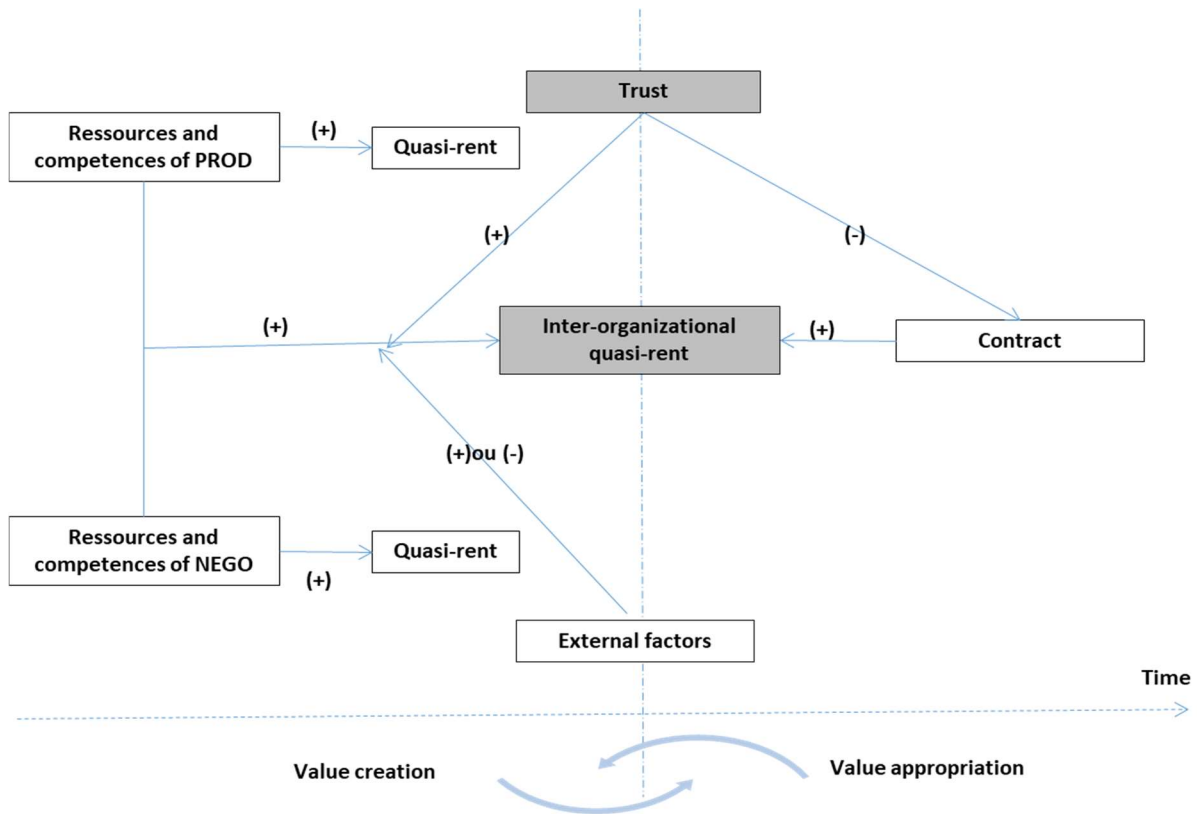


Figure 1: Model of value creation and value appropriation in the PROD-NEGO alliance

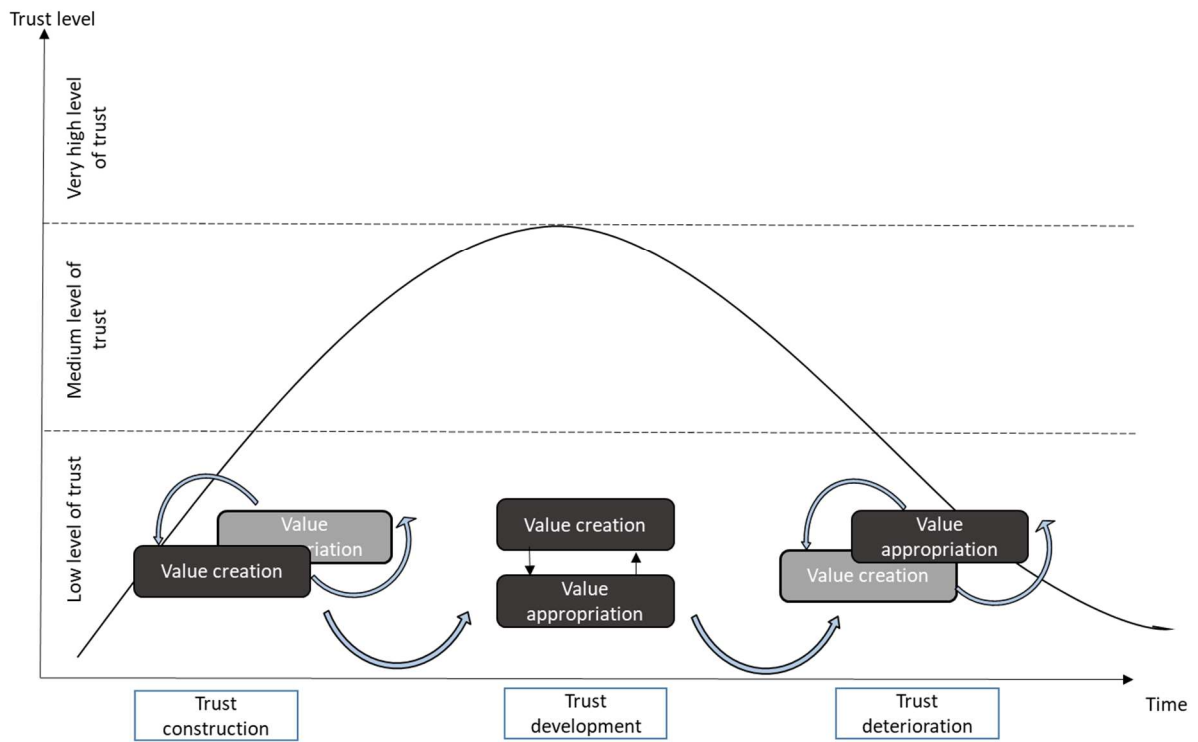


Figure 2: Partners concerns of value creation and value appropriation according to trust evolution in the case of PROD-NEGO alliance

AUTHORS' BIOGRAPHIES:

Maryem Cherni, PhD, is associate professor of strategy and innovation management at Institut Polytechnique Unilasalle, in Beauvais (France). She received her Ph.D. from the Graduate School of Business of Toulouse Capitole University in France. Member of INTERACT Research Unit, her research focuses on the strategic management of interfirm collaborations, mainly partner selection, trust and contract, innovative projects, family firms. maryem.cherni@unilasalle.fr

Valerie Leroux, PhD is the vice president and professor of Management at Institut Polytechnique Unilasalle, in Beauvais (France). She received her Ph.D from Paul Cézanne Aix-Marseille III University – ESSEC Business School. Member of INTERACT Research Unit, her research interests include the relational dynamics in interfirm collaborations, finance and entrepreneurship in the agrifood sectors. valerie.leroux@unilasalle.fr