



HAL
open science

Use of glycans metabolic engineering for studying plant cell wall biosynthesis and functions

Quentin Hays, Mathieu Carlier, Marc Ropitiaux, Aurélie Baron, Boris Vauzeilles, Thomas Poisson, Cyrille Sabot, Jean-Claude Mollet, Patrice Lerouge, Arnaud Lehner

► To cite this version:

Quentin Hays, Mathieu Carlier, Marc Ropitiaux, Aurélie Baron, Boris Vauzeilles, et al.. Use of glycans metabolic engineering for studying plant cell wall biosynthesis and functions. Eurocarb21, The 21st European Carbohydrate Symposium, Jul 2023, Paris, France. hal-04153760

HAL Id: hal-04153760

<https://normandie-univ.hal.science/hal-04153760v1>

Submitted on 6 Jul 2023

HAL is a multi-disciplinary open access archive for the deposit and dissemination of scientific research documents, whether they are published or not. The documents may come from teaching and research institutions in France or abroad, or from public or private research centers.

L'archive ouverte pluridisciplinaire **HAL**, est destinée au dépôt et à la diffusion de documents scientifiques de niveau recherche, publiés ou non, émanant des établissements d'enseignement et de recherche français ou étrangers, des laboratoires publics ou privés.

Use of glycans metabolic engineering for studying plant cell wall biosynthesis and functions

Quentin Hays¹, Mathieu Carlier¹, Marc Ropitiaux¹, Aurélie Baron³, Boris Vauzeilles³, Thomas Poisson², Cyrille Sabot², Jean-Claude Mollet¹, Patrice Lerouge¹, Arnaud Lehner¹

1, Université de Rouen Normandie, GLYCOME UR 4358, SFR Normandie Végétal FED 4277, Innovation Chimie Carnot, IRIB, F-76000 Rouen, France. 2, Université de Rouen Normandie, INSA Rouen Normandie, CNRS, COBRA UMR 6014, Innovation Chimie Carnot, F-76000 Rouen, France. 3, Université Paris-Saclay, CNRS Institut de Chimie des Substances Naturelles, UPR 2301, 91198, Gif-sur-Yvette, France.

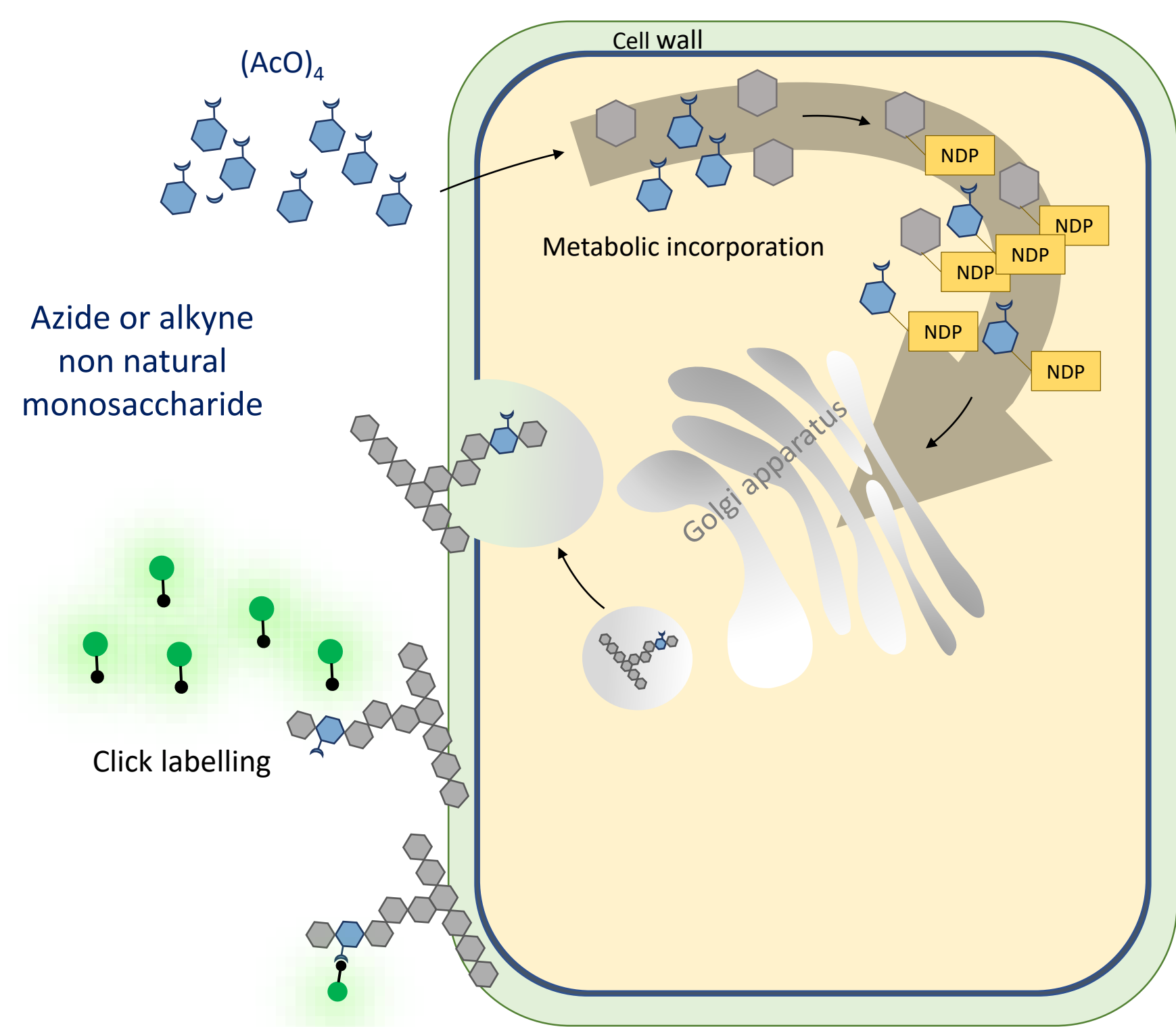


ABSTRACT

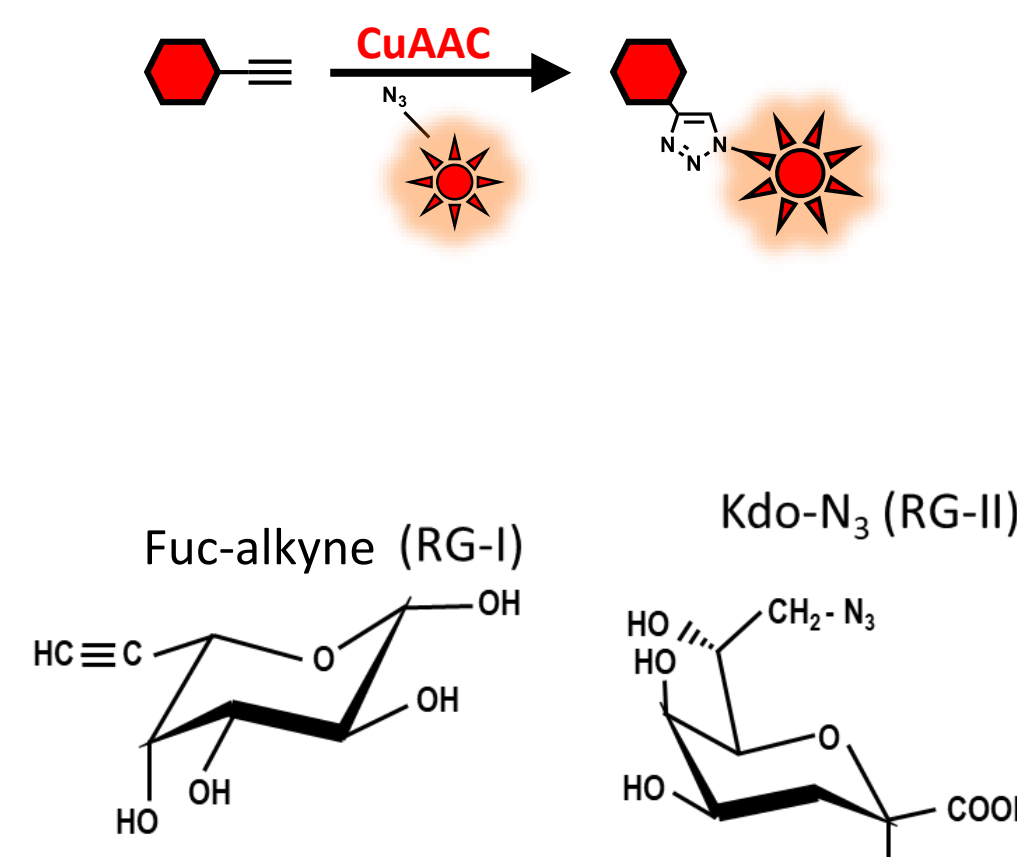
Glycans metabolic engineering is a powerful tool for studying the glycosylation of living cells [1, 2]. The use of modified monosaccharides, such as deoxy or fluorinated sugars, has been reported as a powerful pharmacological approach for studying carbohydrate metabolism and plant cell wall biosynthesis [3]. Moreover, non-natural metabolite derivatives that carry functions enabling bio-orthogonal ligations are now widely used for glycomolecules imaging in living organism. In both cases, these derivatives must cross the cell membrane and be accepted by the biosynthetic machinery of the cell to produce nucleotide-sugars that will be taken in charge by the enzymatic machinery to build complex glycomolecule such as cell wall polysaccharides in plant. Here, we illustrate the use of glycan metabolic engineering, photo release of caged monosaccharide derivative and click-chemistry, for studying the plant cell wall biosynthesis and function with an emphasis of the pectic domain rhamnogalacturonan II [4, 5].

Metabolic Labeling

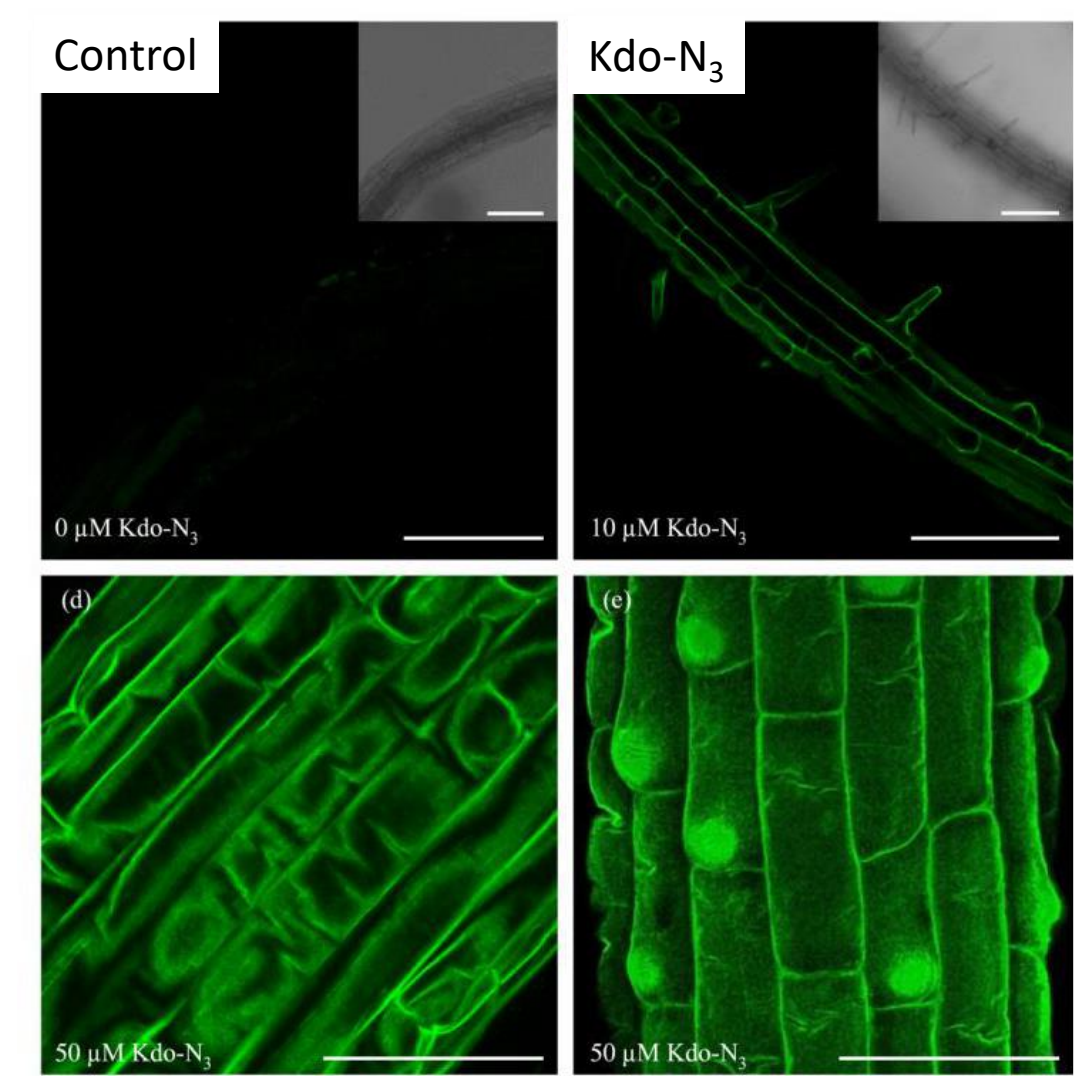
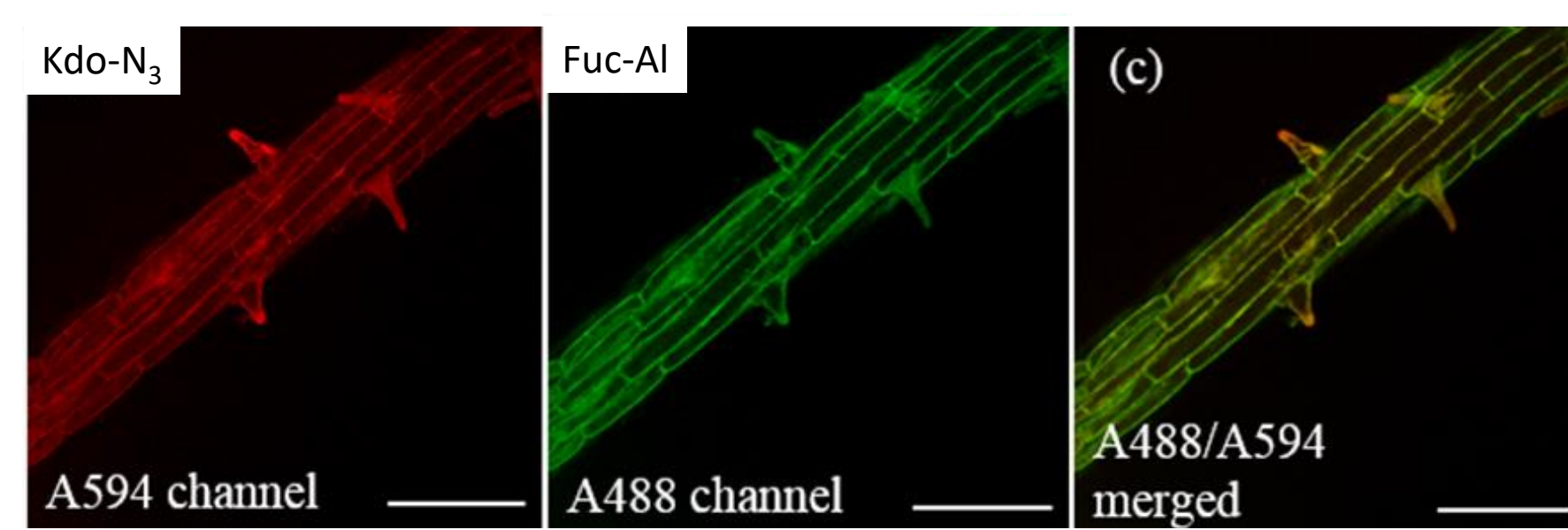
Plant cells are feeded with acetylated non-natural sugar derivatives carrying azide or alkyne function. Monosaccharides are incorporated during the biosynthesis of plant cell wall polysaccharide before being visualized through a bioorthogonal reaction with a fluorophore.



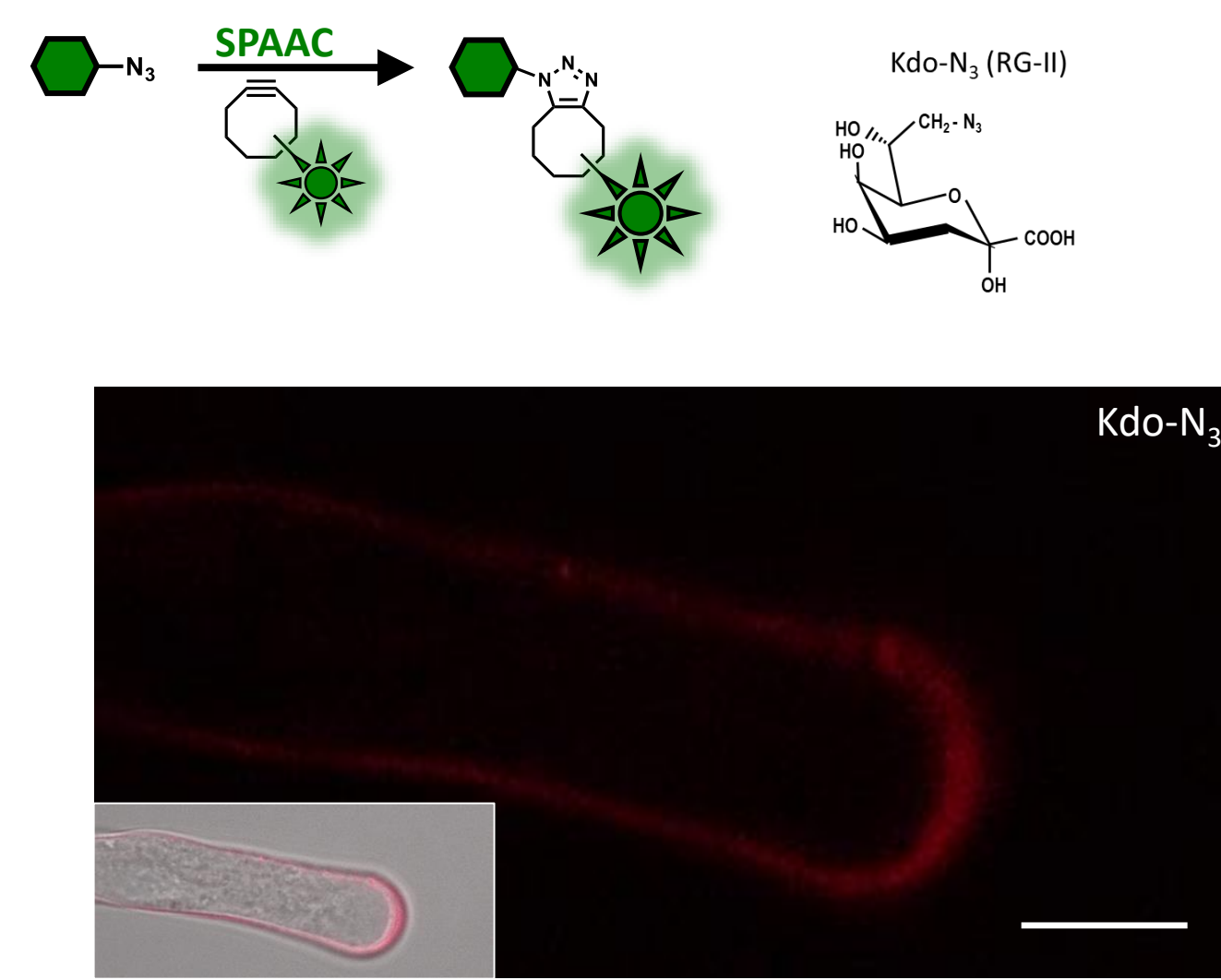
CuAAC : Labeling of pectic polysaccharide in plant cell wall using Fucose and Kdo derivatives



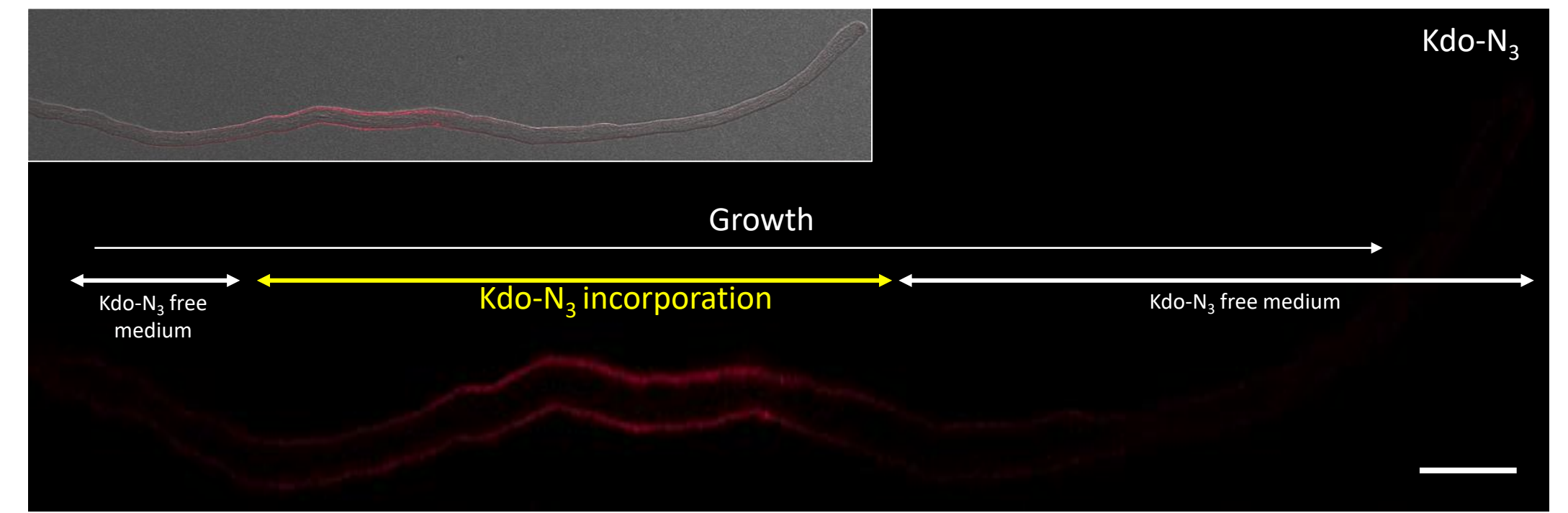
Kdo-N₃ and Fuc-Al are incorporated respectively in rhamnogalacturonan I and rhamnogalacturonan II [3,6]. CuAAC and SPAAC are two complementary technics that enable the double labeling of cell wall carbohydrate (CuAAC) or the labeling of living and elongating cells (SPAAC). SPAAC offers the possibility for live-imaging of polysaccharides deposition and recycling during cell growth [7].



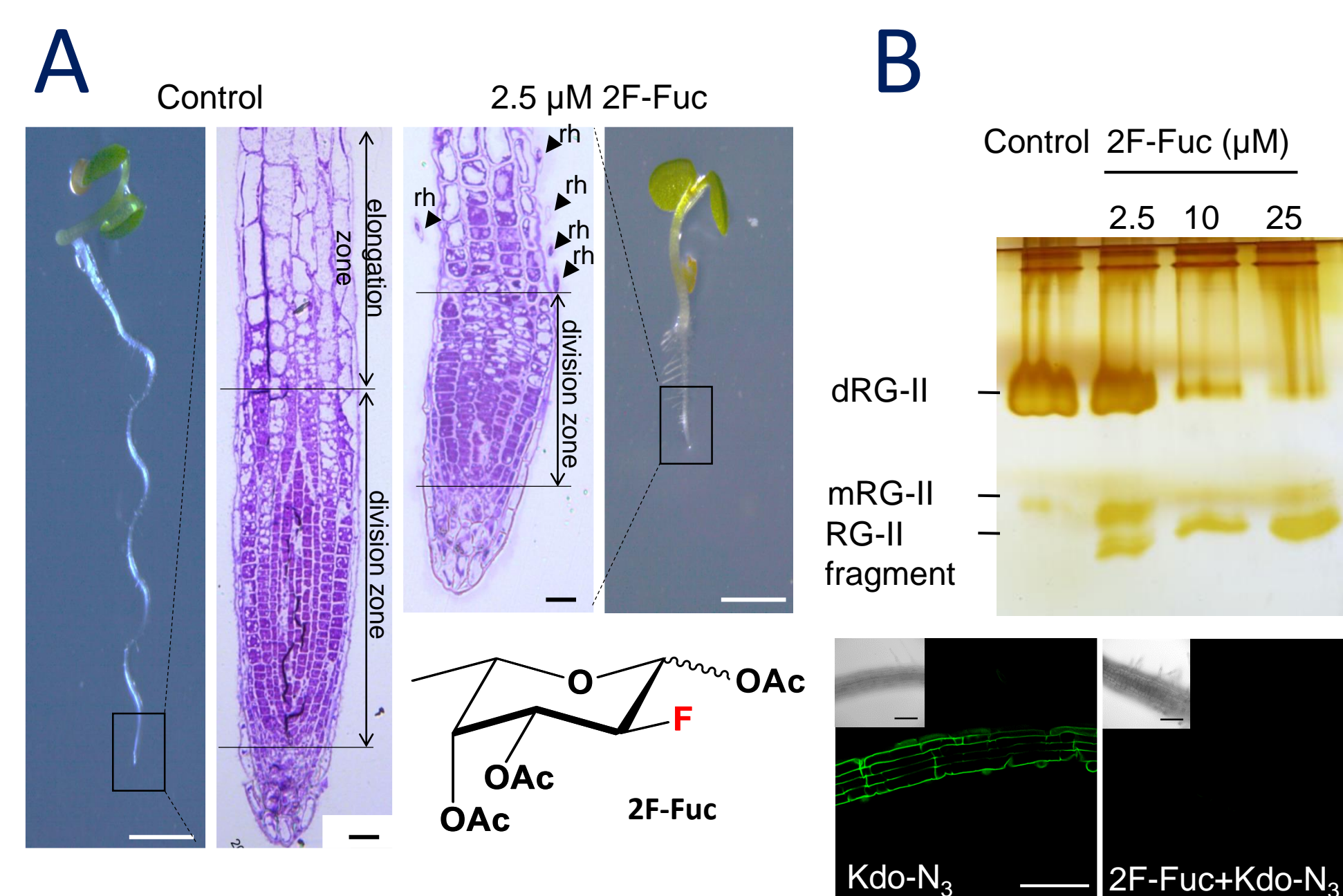
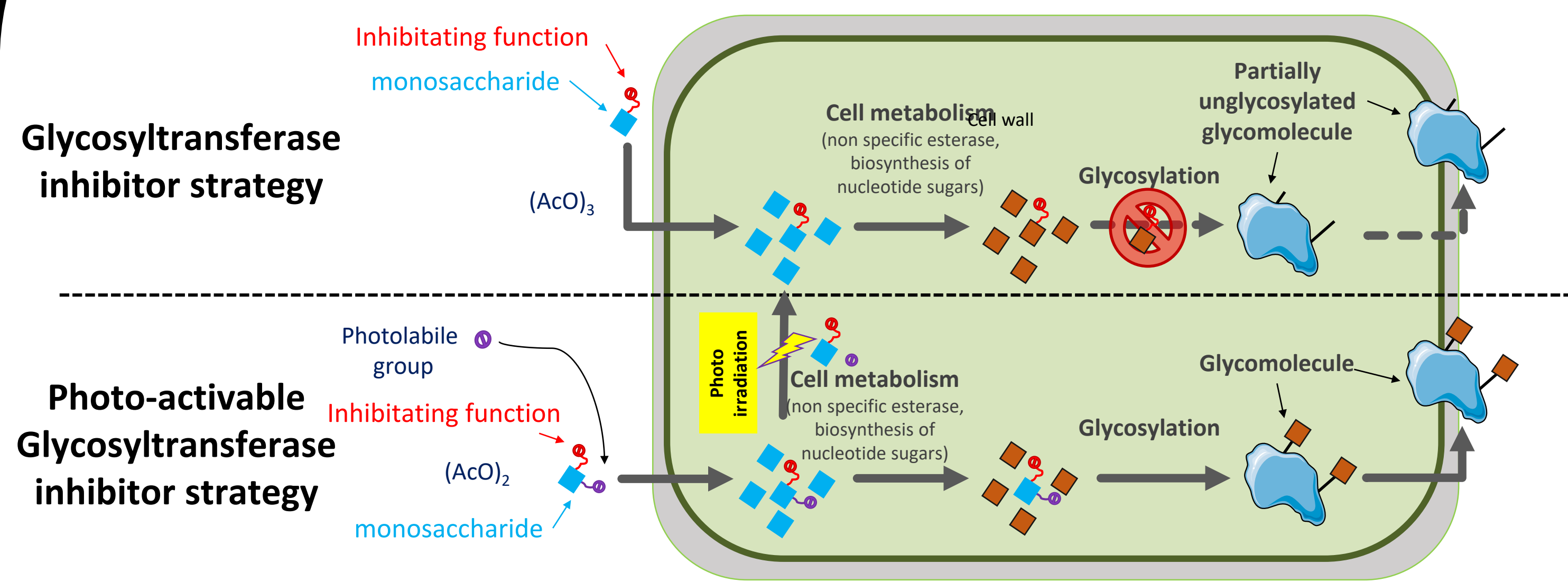
SPAAC : Labeling of pectic polysaccharide in LIVING plant cell wall using Kdo derivatives



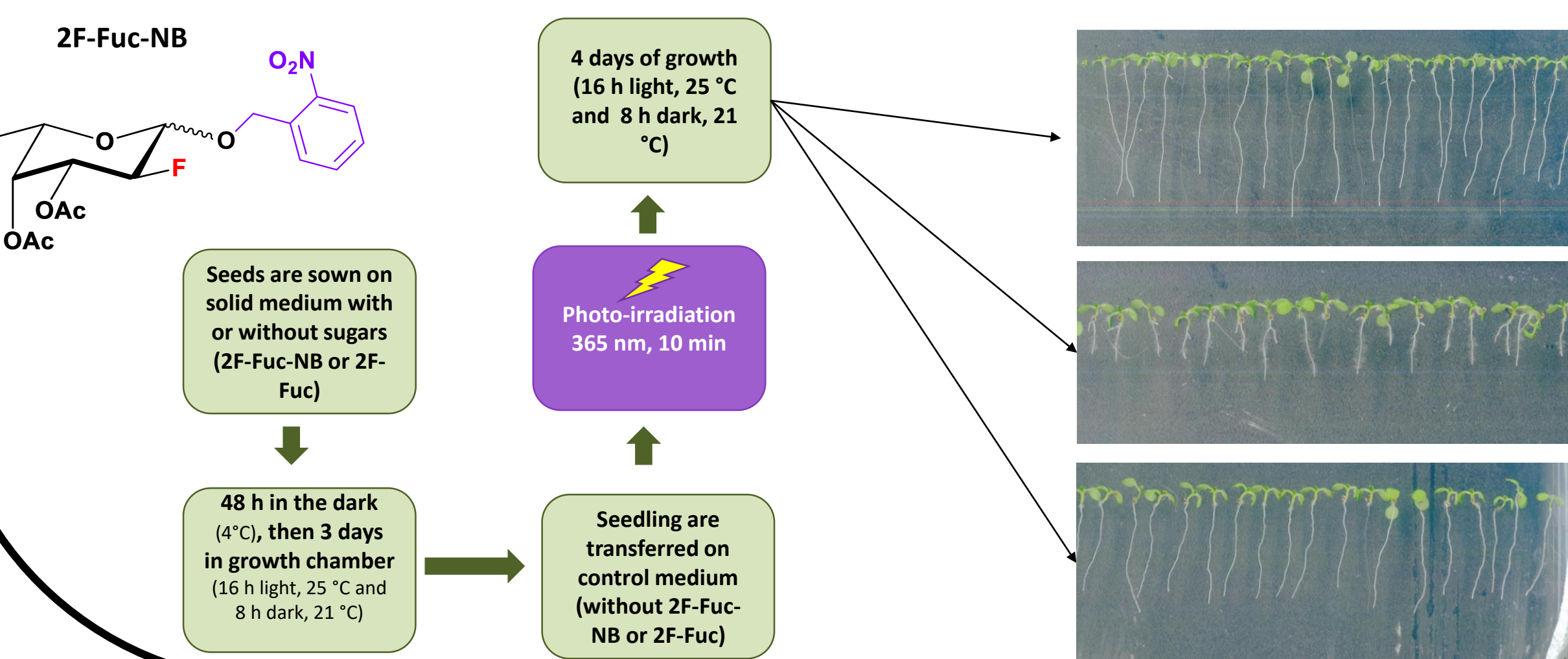
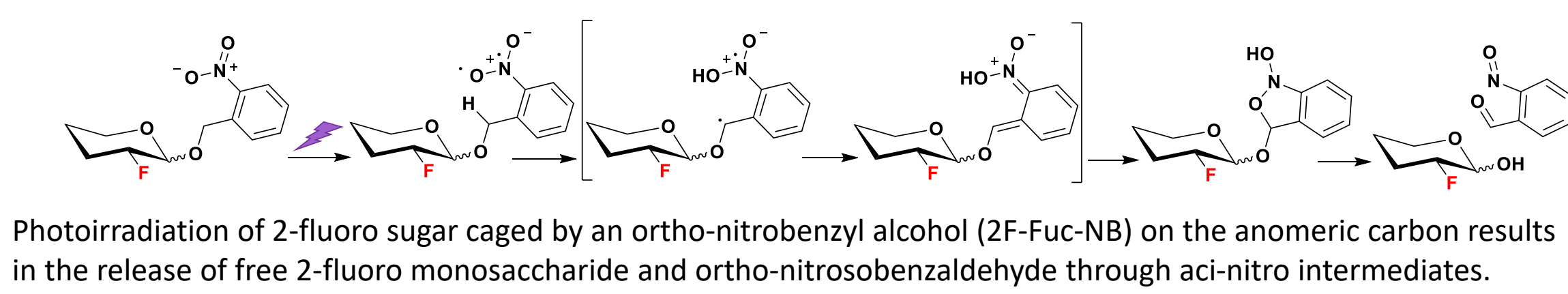
Metabolic labeling of rhamnogalacturonan II in living and elongating tobacco pollen tubes



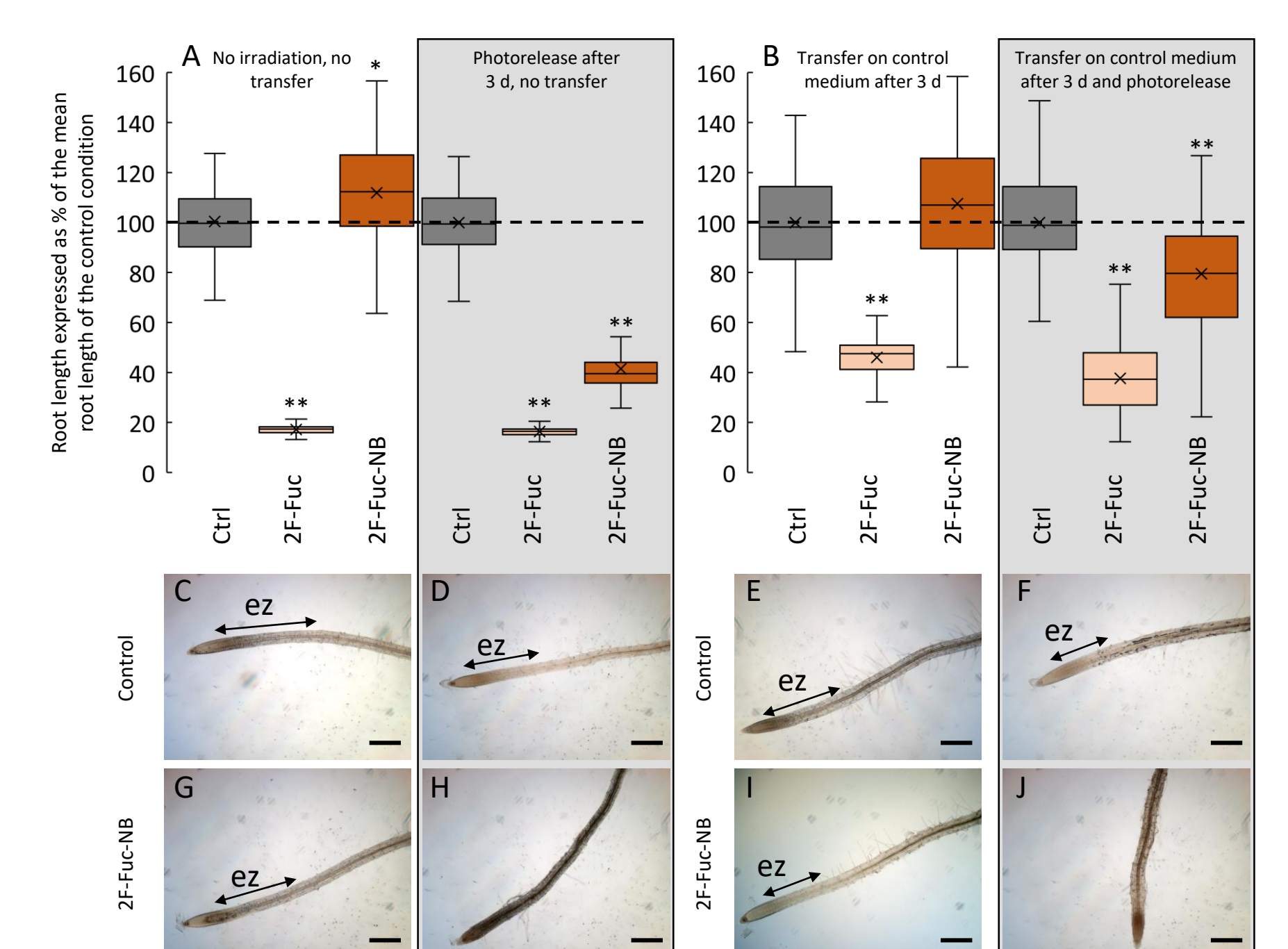
Glycosyltransferases inhibitors



2F-Fuc is incorporated and inhibits root elongation (A) by disrupting the pectic domain rhamnogalacturonan II (RG-II) synthesis and dimerization (B)[4]. RG-II were separated by gel electrophoresis and RG-II was imaged using metabolic labeling followed by CuAAC with Alexa fluor 488 (B).



The photorelease of the trapped 1-OH-2F-Fuc was performed under a 365 nm LED illumination. We demonstrated that the *in planta* elimination by photoexcitation of the photolabile group releases free 2F-Fuc in plant cells, which in turn inhibits in a dose-dependent manner and, reversibly, the root cell elongation [8]. 2F-Fuc was used as positive control.



References:

- Kayser H, Zeitler R, Kannicht C, Grunow D, Nuck R, Reutter W. *Journal of Biological Chemistry* 1992, 267, 16934–16938.
- Mahil L.K, Yarema K.J, Bertozzi C.R. *Science* 1997, 276, 1125–1128.
- Dumont M, Lehner A, Bardor M, Burel C, Vauzeilles B, Lerouge P, Mollet J-C, Lerouge P. *The Plant Journal* 2016, 84, 1137–1151.
- Dumont M, Lehner A, Vauzeilles B, Malassis J, Marchant A, Smyth K, Linclau B, Baron A, Mas Pons J, Anderson CT, Schapman D, Galas L, Mollet J-C, Lerouge P. *The Plant Journal* 2015, 85, 437–447.
- Lerouge P, Carlier M, Mollet J-C, Lehner A. *Carbohydrate Chemistry* 2021, 553–571.
- Anderson CT, Wallace I.S, Somerville C.R. *Proceedings of the National Academy of Sciences* 2012, 109, 1329–1334.
- Ropitiaux M, Hays Q, Baron A, Fourmois L, Boulogne I, Vauzeilles B, Lerouge P, Mollet J-C, Lehner A. 2022, *The Plant Journal*, 110, 916–924.
- Carlier M, Poisson T, Mollet J-C, Lerouge P, Sabot C, Lehner A. 2023, *International Journal of Molecular Sciences*, 24, 2533.

Acknowledgements:

The authors are grateful to the Region Normandie and the European fund FEDER for the financial supports of the INHIBITEURS Fluoré et photo-Activables (INFRA) and of the Normandy Plant Technology (NPT) project. The authors are grateful to the graduate school of research XL-Chem (ANR-18-EURE-0020 XL CHEM) for financial support.

Conclusion: The glycans metabolic engineering has the potential to contribute to the study of glycosylation of growing plants. The modification of glycoconjugates by a chemical reporter or by inhibition of part of their biosynthetic pathways during the growth of the plant can help to expand knowledge on the dynamics of formation of plant walls.