



HAL
open science

Account of ambient turbulence for turbine wakes using a Synthetic-Eddy-Method

Grégory Pinon, Clément Carlier, Arnaud Fur, Benoît Gaurier, Grégory Germain, Élie Rivoalen

► To cite this version:

Grégory Pinon, Clément Carlier, Arnaud Fur, Benoît Gaurier, Grégory Germain, et al.. Account of ambient turbulence for turbine wakes using a Synthetic-Eddy-Method. *Journal of Physics: Conference Series*, 2017, 854, pp.012016. 10.1088/1742-6596/854/1/012016 . hal-03776682

HAL Id: hal-03776682

<https://normandie-univ.hal.science/hal-03776682v1>

Submitted on 14 Sep 2022

HAL is a multi-disciplinary open access archive for the deposit and dissemination of scientific research documents, whether they are published or not. The documents may come from teaching and research institutions in France or abroad, or from public or private research centers.

L'archive ouverte pluridisciplinaire **HAL**, est destinée au dépôt et à la diffusion de documents scientifiques de niveau recherche, publiés ou non, émanant des établissements d'enseignement et de recherche français ou étrangers, des laboratoires publics ou privés.

PAPER • OPEN ACCESS


Account of ambient turbulence for turbine wakes using a Synthetic-Eddy-Method

To cite this article: Grégory Pinon *et al* 2017 *J. Phys.: Conf. Ser.* **854** 012016

View the [article online](#) for updates and enhancements.

You may also like

- [Morphological Stability during Electrodeposition: II. Additive Effects](#)
Mikko Haataja, David J. Srolovitz and Andrew B. Bocarsly
- [Validation of theory-based models for the control of plasma currents in W7-X divertor plasmas](#)
A. Dinklage, G. Fuchert, R.C. Wolf et al.
- [Ground states for fractional linear coupled systems via profile decomposition](#)
José Carlos de Albuquerque, Diego Ferraz and Edcarlos D Silva



The advertisement features a dark teal background. On the left, the ECS logo is displayed above the text 'The Electrochemical Society Advancing solid state & electrochemical science & technology'. Below this, the '242nd ECS Meeting' is announced for 'Oct 9 – 13, 2022 • Atlanta, GA, US', with 'Presenting more than 2,400 technical abstracts in 50 symposia'. A central portrait of M. Stanley Whittingham is accompanied by a Nobel Prize medal. To the right, a 'Register now!' button with a checkmark icon is positioned above a photograph of a large audience at a conference. Below the audience photo, a person is shown interacting with a futuristic, glowing interface of icons.

ECS The Electrochemical Society
Advancing solid state & electrochemical science & technology

242nd ECS Meeting
Oct 9 – 13, 2022 • Atlanta, GA, US
Presenting more than 2,400
technical abstracts in 50 symposia

ECS Plenary Lecture
featuring
M. Stanley Whittingham,
Binghamton University
Nobel Laureate –
2019 Nobel Prize in Chemistry

Register now!

Account of ambient turbulence for turbine wakes using a Synthetic-Eddy-Method

Grégory Pinon^{1,*}, Clément Carlier^{1,2}, Arnaud Fur^{1,2}, Benoît Gaurier², Grégory Germain², Élie Rivoalen^{1,3}

1 - Normandie Univ, UNIHAVRE, CNRS, LOMC, 76600 Le Havre.

2 - IFREMER, LCSM, 150 quai Gambetta, BP 699, 62321 Boulogne-sur-Mer, France.

3 - Normandie Univ, INSA Rouen, LMN, 76000 Rouen, France.

E-mail: gregory.pinon@univ-lehavre.fr

Abstract. The present paper aims at describing the use of a Synthetic-Eddy-Method (SEM), initially proposed by Jarrin *et al.* [12], in the 3D Lagrangian Vortex method framework. The SEM method is used here in order to generate a far-field incoming flow with a prescribed ambient turbulence intensity. However, for the account of the diffusive term in the Navier-Stokes equations, a classical Particle Strength Exchange model with a LES eddy viscosity is used.

Firstly, the general characteristics of the Synthetic-Eddy-Method will be presented together with its integration in the framework of the developed 3D unsteady Lagrangian Vortex software [27]. The capability of the ambient turbulence model to reproduce a perturbed flow that verifies any turbulence intensity I_∞ and any anisotropic ratio ($\sigma_u:\sigma_v:\sigma_w$) will be discussed and validated. Then, the capability of the presented ambient turbulence model to compute turbine wakes will also be presented together with first results. Finally, comparisons will be made between the obtained numerical results against experimental data [22, 23] for two levels of ambient turbulence, namely $I_\infty = 3\%$ and $I_\infty = 15\%$. Although the present study was initially performed in the framework of tidal energy, its application to wind energy is straightforward.

1. Introduction

The development of renewable energy has been rather intensive for some years, mainly using wind turbines. But tidal turbine are also arising. However, at the scientific level, many studies are still necessary in order to fully understand the behaviour of such arrays. One of these topics is the impact that ambient turbulence has on the behaviour of turbines in a farm. Indeed some studies demonstrated that ambient turbulence highly modifies the behaviour of turbines [26, 1, 6, 5, 4, 8]. In the tidal energy community, many recent studies have shown that ambient turbulence intensity I_∞ (see eq. (1)) highly modifies the behaviour of turbines [8, 2, 25, 22, 19].

$$I_\infty = 100 \sqrt{\frac{\frac{1}{3}[\sigma^2(u_\infty) + \sigma^2(v_\infty) + \sigma^2(w_\infty)]}{\bar{u}_\infty^2 + \bar{v}_\infty^2 + \bar{w}_\infty^2}} \quad (1)$$

In the previous equation, $\mathbf{u} = (u, v, w)$ is the 3D velocity vector, \bar{u} stands for the average-value of any velocity record u and $\sigma(u)$ represents the corresponding standard deviation. One of the most noticeable influence can be observed in the wake, downstream of the turbine. Indeed as shown in Ref. [22] for instance, the higher the turbulence intensity I_∞ is, the faster the



wake effects decrease. Moreover the interactions between turbines are also highly modified by ambient turbulence as shown by Mycek *et al.* [23] in their study of the performances and wake of two interacting turbines. The relative spread in *in situ* ambient turbulence levels inhibits the definition of general guidelines on tidal arrays with respect to turbulence. For wind energy, although the fact that atmospheric boundary layer has a different behaviour than in sea, the situation may be similar. Therefore, the influence of each level of ambient turbulence needs to be characterised, either experimentally or numerically.

Consequently numerical simulations have to represent the ambient turbulence, or at least its effects on the performance and wake of the turbines. In the present paper, the objective is not to describe a turbulence model (like a RANS closure, LES or DES models) but how to generate accurate turbulent inflow conditions, that represent a given ambient turbulence. In the literature, some numerical works were carried out in that aim. One of the most famous initialisation of ambient turbulence boundary conditions is TurbSim [13] from NREL. But many others exist. For example, Chatelain *et al.* [6] used the Mann's algorithm [17] to synthesise a turbulent inflow in the case of wind turbines simulations. Branlard *et al.* [5, 4] used a similar Vortex method approach with frozen and un-frozen approach for turbulence and possibly shear. The present study considers the Synthetic-Eddy-Method (SEM), initially proposed by Jarrin *et al.* [12, 11], because an easier adaptation to the Vortex Method framework is foreseen. Togneri *et al.* [30, 31] already investigated a similar Synthetic-Eddy-Method in order to generate synthetic turbulent inflow conditions for their BEMT-CFD software.

This paper presents the latest numerical developments carried out to integrate a SEM module in the developed 3D Vortex Method software [27]. This software already possesses an LES turbulent model, its turbulent eddy viscosity being based on the work of Mansour *et al.* [18].

The first part of this paper is devoted to the presentation of the numerical method used to compute the flow around a wind or tidal turbine. Then in a second part, the Synthetic-Eddy-Method is presented as well as its integration in the present software. The last part of this paper focuses on preliminary results obtained using this method to represent the ambient turbulence I_∞ . Eventually, conclusions are drawn on the presented work and an outlook on future development is proposed.

2. Numerical method

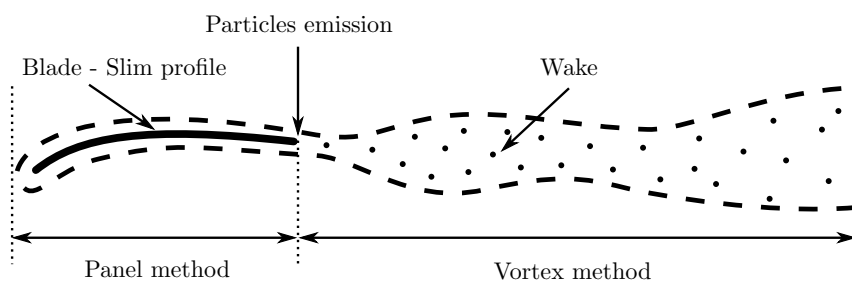


Figure 1. Scheme describing the different methods used in the software. The blade is supposed infinitely thin and is presented as cut-section.

The developed software to simulate turbines and wakes is based on the Vortex method [29, 14, 9]. This method is an unsteady Lagrangian method, where the flow is discretised using vorticity carrying particles (see Fig. 1) and the turbines are represented using a panel method [3]. In this numerical method, the Navier-Stokes equations for an unsteady and incompressible flow are used in their velocity/vorticity $(\mathbf{u}, \boldsymbol{\omega})$ formulation:

$$\nabla \cdot \mathbf{u} = 0, \quad (2)$$

$$\frac{D\boldsymbol{\omega}}{Dt} = (\boldsymbol{\omega} \cdot \nabla) \mathbf{u} + \nu \Delta \boldsymbol{\omega}, \quad (3)$$

where \mathbf{u} is the velocity field, $\boldsymbol{\omega} = \nabla \wedge \mathbf{u}$ is the vorticity field and ν is the kinematic viscosity. Equation (3) represents the momentum equation in the velocity-vorticity formulation. $(\boldsymbol{\omega} \cdot \nabla) \mathbf{u}$ stands for the stretching term and $\nu \Delta \boldsymbol{\omega}$ for diffusion. By means of a viscous splitting (see Chap. 5 of Cottet & Koumoutsakos [9]), diffusion is handled via a Particle Strength Exchange model initially developed by Degond & Mas-Gallic [10] and Choquin & Huberson [7]. Additionally, an LES model with a turbulent eddy viscosity based on the work of Mansour *et al.* [18] completes the numerical model for diffusion. At this point of the document, it has to be reminded that the pre-cited methods to treat the viscous term of equation (3) (via a PSE scheme) and turbulent eddy viscosity (the LES of Mansour *et al.*) are rather well known in the scientific community. One can refer to [27] for more detailed information of the implementation. But the real novelty of the present paper is the use of the Synthetic Eddy Method (SEM) to generate far-field ambient turbulence as it will be discussed in Section 3.

The Helmholtz decomposition of the velocity field (eq. (4)) is used in order to decompose the velocity vector:

$$\mathbf{u} = \nabla \wedge \boldsymbol{\psi} + \nabla \phi + \mathbf{u}^\infty = \mathbf{u}^\psi + \mathbf{u}^\phi + \mathbf{u}^\infty, \quad (4)$$

Thus the velocity field is divided into three parts:

- a potential component \mathbf{u}^ϕ representing the influence of the turbines blades on the flow (see Fig. 1 and 2), a panel method (boundary integrals) is used to solve the Laplace equation for ϕ .
- a rotational component \mathbf{u}^ψ representing the wake of the turbines (see Fig. 1 and 2), a 3D Vortex method is used to solve a Poisson equation for $\boldsymbol{\psi}$.
- a velocity vector \mathbf{u}^∞ representing the upstream tidal current.

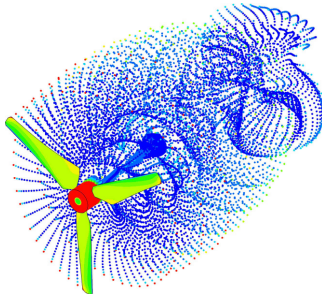


Figure 2. Rough results of the computation showing the blades coloured by the dipole-value and the free vorticity carrying particles.

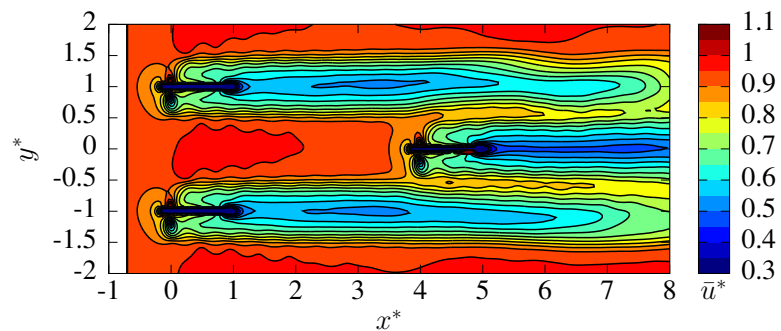


Figure 3. Post-treated velocity map of 3 interacting turbines immersed in incoming flow. Here, the ambient turbulence intensity is set to $I_\infty = 0\%$. The image is reproduced from Mycek *et al.* [24].

In order to make the link between the rotational and the potential parts of the velocity, particles are emitted at the blade's trailing edge using a Kutta condition [14]. The emitted particles are then advected in the flow as shown in Fig. 2. The rotational part of the velocity field is calculated as the sum of the influence of these vorticity carrying particles. The expression of the component \mathbf{u}^ψ is obtained in every point of the fluid domain by solving the Biot-Savart law [32]. The calculation of this \mathbf{u}^ψ -component for each particles represents the major part of the computational cost. For that reason, a *Treecode* algorithm inspired from Lindsay and Krasny [15] is used to reduce the computational time. Then, the results are post-treated in order to obtain a map of the velocity field as presented in Fig. 3. This previous velocity map

is reproduced from Mycek *et al.* [24], where a judicious pre-conditioner is presented for solving the potential component \mathbf{u}^ϕ in case of several turbines in interaction. In that respect, a pre-conditioned Bi-CGSTAB solver is presented in Ref. [24] that really speeds up the computation of this velocity component. For more details on the computations, including Biot-Savart equation desingularisation, remeshing or time-stepping, etc., one can refer to [27].

3. Synthetic-Eddy-Method

The Synthetic-Eddy-Method was initially developed to generate an inflow velocity boundary condition for a given turbulence intensity I_∞ and a given anisotropic ratio ($\sigma_u:\sigma_v:\sigma_w$) by adding a perturbation term, which is added to the far-field mean velocity of the flow $\mathbf{u}^\infty = (u^\infty, v^\infty, w^\infty)$. The present paper aims at describing its implementation in the Lagrangian Vortex framework, and not only as inflow velocity condition but applied to the whole flow domain.

3.1. General overview of the method

Similarly to a Reynolds decomposition of the velocity, a fluctuating term \mathbf{u}^σ is added to the upstream mean velocity $\overline{\mathbf{u}^\infty}$ and the upstream velocity \mathbf{u}^∞ then becomes:

$$\mathbf{u}^\infty(\mathbf{x}) = \overline{\mathbf{u}^\infty} + \mathbf{u}^\sigma(\mathbf{x}). \quad (5)$$

On the contrary to the already presented method [12, 11], this perturbation term is not only added at the inlet of the fluid domain but everywhere in the studied space. This aspect will be treated later in sub-sec. 3.3.

The perturbation term \mathbf{u}^σ is calculated as the influence of N generated "turbulent structures", also called "eddies" in [12, 11], randomly placed in the studied space. Then the perturbation term \mathbf{u}^σ induced by those N turbulent structures is simply defined as the sum of the influences of each structure k :

$$\mathbf{u}^\sigma(\mathbf{x}) = \sum_{k=1}^N \mathbf{u}^{\sigma,k}(\mathbf{x}), \quad (6)$$

with \mathbf{x} being any point of the flow and $\mathbf{u}^{\sigma,k}$ the velocity induced by a single turbulent structure k . This last term can be expressed as:

$$\mathbf{u}^{\sigma,k}(\mathbf{x}) = \sqrt{\frac{V_\sigma}{N}} \mathbf{c}^k F_\lambda(\mathbf{x} - \mathbf{x}^k), \forall k \in [1, N], \quad (7)$$

where V_σ is the volume of the three-dimensional space containing all the N "turbulent structures". At this point, the turbulent structure k and more particularly its intensity \mathbf{c}^k needs to be defined together with the function F_λ .

3.2. Intensity and shape function

Each turbulent structure k is defined by its position \mathbf{x}^k in the flow and its intensity \mathbf{c}^k . The intensity \mathbf{c}^k is defined as:

$$c_i^k = \sum_{j=1}^3 a_{i,j} \epsilon_{i,j}^k \quad \forall i \in \{1, 2, 3\}, \forall k \in [1, N]. \quad (8)$$

The different $\epsilon_{i,j}^k$ terms that intervene in equation (8) are independent random values that follow a normal or Gaussian distribution centred around 0 with a variance of 1. This $\epsilon_{i,j}^k$ term is supposed to represent the random aspect of turbulence. The elements $a_{i,j}$ represents any

element of a matrix \underline{A} , which is basically the Cholesky decomposition of the Reynolds Stress Tensor \underline{R} (see eq. (9)).

$$\underline{R} = \begin{pmatrix} R_{1,1} & R_{1,2} & R_{1,3} \\ R_{2,1} & R_{2,2} & R_{2,3} \\ R_{3,1} & R_{3,2} & R_{3,3} \end{pmatrix} = \underline{A}\underline{A}^T \quad \text{with} \quad \underline{A} = (a_{i,j}) \quad (9)$$

With these equations (8) and (9), the link between the intensities \mathbf{c}^k of the turbulent structures and the Reynolds Stress Tensor \underline{R} ensures the generation of a velocity field that statistically replicates any given turbulence intensity I_∞ and any given anisotropic ratio ($\sigma_u:\sigma_v:\sigma_w$) [16, 12]. Indeed the three components of the anisotropic ratio ($\sigma_u:\sigma_v:\sigma_w$) are just the square root of the diagonal components over the component R_{11} of the Reynolds Stress Tensor \underline{R} . Moreover the turbulence intensity I_∞ expression can be rewritten in function of the trace of the Reynolds Stress Tensor \underline{R} as shown in equation (10):

$$\begin{aligned} I_\infty &= 100 \sqrt{\frac{\frac{1}{3}[\sigma^2(u_\infty) + \sigma^2(v_\infty) + \sigma^2(w_\infty)]}{\bar{u}_\infty^2 + \bar{v}_\infty^2 + \bar{w}_\infty^2}} \\ &= \frac{100}{|\mathbf{u}^\infty|} \sqrt{\frac{R_{1,1} + R_{2,2} + R_{3,3}}{3}} \\ &= \frac{100}{|\mathbf{u}^\infty|} \sqrt{\frac{\text{tr}(\underline{R})}{3}} \end{aligned} \quad (10)$$

This last equation (10) ensures that the generated turbulence will have the desired turbulence intensity I_∞ and the desired anisotropic ratio ($\sigma_u:\sigma_v:\sigma_w$).

The second part of equation (7) is F_λ also called the shape function and it can be expressed as:

$$F_\lambda(\mathbf{y}) = \prod_{i=1}^3 f_{\lambda_i}(y_i). \quad (11)$$

λ defines the size of the zone of influence of each turbulent structure k . This size is probably linked to a turbulent length scale (Taylor or Kolmogorov length scales) but this will need further investigation. As it is defined by a vector λ , and presented in equation (11), the zone of influence can ideally have different sizes regarding each coordinate (λ_i). And additionally, each turbulent structure could have its own size vector λ but this will be treated in the following. The sub-functions f_λ that intervene in the evaluation of the shape function F_λ have to meet some conditions to ensure that the ambient turbulence has the chosen characteristics:

$$\text{argmax}_y(f_\lambda(y)) = 0, \quad (12a)$$

$$f_\lambda(y) = f_\lambda(-y), \quad (12b)$$

$$\int_{-\lambda}^{\lambda} (f_\lambda^2(y)) dy = 1. \quad (12c)$$

In the preliminary results presented in section 4, the basic shape function F_λ (eq. (11)) indicated in Jarrin *et al.* [12, 11] is used. Indeed its sub-function f_λ simply is a tent function, represented by a triangular function centred at zero with a base of 2λ .

$$f_\lambda(y) = \begin{cases} \sqrt{\frac{3}{2\lambda^3}}(\lambda - |y|) & \text{if } |y| < \lambda \\ 0 & \text{otherwise.} \end{cases} \quad (13)$$

Figure 4 depicts tent functions for different values of λ . It is anticipated that this basic tent function (eq. 13) will not meet all the requirement of smoothness, especially if ones want to computed the velocity gradient, etc. However, in order to start with, this basic function issued from the bibliography will be used but other shape function were already tested and validated.

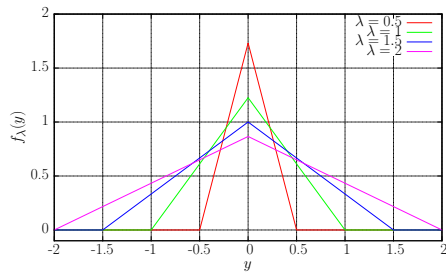


Figure 4. The tent function for different sizes λ of turbulent structure.

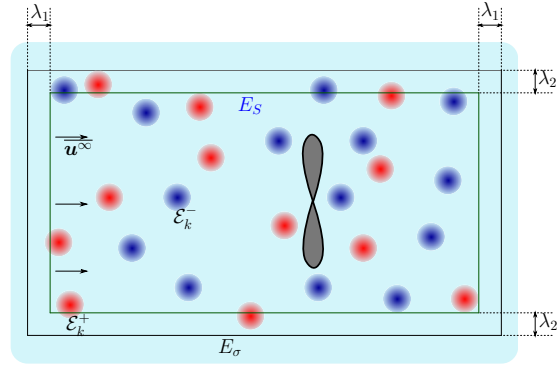


Figure 5. General representation scheme of the developed ambient turbulence model.

3.3. Integration of the Synthetic-Eddy-Method into the Vortex method

The numerical method presented in Section 2 is an unsteady Lagrangian method defined for an unbounded domain. Indeed, the fluid domain is supposed to be infinite but the zone where particles are present, grows with the particles emission and their advection in the flow. In fact, there is no domain boundaries as in Eulerian formulation. Unfortunately the Synthetic-Eddy-Method need the definition of a precise volume V_σ (see eq. (7)) containing all the turbulent structures, which is not required for classical Vortex method. Thus in order to combine the Synthetic-Eddy-Method with the Vortex method, a studied space E_S needed to be defined. The desired velocity fluctuations induced by the Synthetic-Eddy-Method will be applied inside this E_S domain.

Once the studied space E_S is defined, a turbulent space E_σ of volume V_σ can be created. This turbulent space E_σ contains all the turbulent structures used in the Synthetic-Eddy-Method. If one wants to have a statistically correct velocity fluctuations everywhere inside the studied space E_S , some conditions on the turbulent space E_σ are needed, especially at the limit. Therefore, the turbulent space E_σ needs to be a little larger than the studied space E_S :

$$\min(x_i \in E_\sigma) \leq \min(x_i \in E_S) - \lambda_i \quad \forall i \in \{1, 2, 3\}, \quad (14a)$$

$$\max(x_i \in E_\sigma) \geq \max(x_i \in E_S) + \lambda_i \quad \forall i \in \{1, 2, 3\} \quad (14b)$$

with \mathbf{x} a position vector and $\boldsymbol{\lambda} = \lambda_i$, ($i = 1, 3$) the size vector of the turbulent structures. Those conditions simply ensure that all the study space is influenced by the turbulent structures.

Now that the turbulent space E_σ is defined, the generation of the turbulent structures can be performed. E_σ is initialised with the N turbulent structures k and their intensities \mathbf{c}^k are calculated using equation (8) with $\epsilon_{i,j}^k$, taking the value 1 with a probability of 1/2 and the value -1 with an equal probability. Then each turbulent structure is randomly placed in the turbulent space E_σ .

During the simulation, the turbulent structures will be advected by the flow. Here, different strategies can be applied: either the structures can be advected by $\overline{\mathbf{u}^\infty}$, which is somehow too simplistic, or the structures can be advected by \mathbf{u} as defined in equation (4). Additionally, these structures could also be used in order to compute the stretching term of the Navier-Stokes equation (first term of the right end side of equation (3) but not detailed here). In this preliminary study, the first option was chosen that is: the structures are advected by $\overline{\mathbf{u}^\infty}$ without influencing the stretching term. These structures work somehow as an under-layer, which means that they will influence the velocity distribution on the turbines (and hence the particles emission process) and also the particles in the wake. But they will not be influenced reciprocally.

Studied case	$R_{11} = \sigma_u^2$ $\times 10^{-2}$	$R_{22} = \sigma_v^2$ $\times 10^{-2}$	$R_{33} = \sigma_w^2$ $\times 10^{-2}$	Err/ I_∞^{theo}
$I_\infty^{theo} = 15\%$	3.60	2.02	1.13	0%
$N = 100$	3.30	2.03	1.13	3.13%
$N = 500$	3.49	2.00	1.20	1.55%
$N = 1000$	3.51	1.96	1.09	1.18%
$I_\infty^{theo} = 15\%$	3.60	2.02	1.13	0%
$\lambda = (0.5 : 0.5 : 0.5)$	3.59	2.04	1.17	0.09%
$\lambda = (0.75 : 0.75 : 0.75)$	3.59	2.03	1.11	0.08%
$\lambda = (1.0 : 1.0 : 1.0)$	3.51	1.96	1.09	1.18%
$I_\infty^{theo} = 15\%$	3.60	2.02	1.13	0%
$\lambda = (0.5 : 0.4 : 0.5)$	3.68	2.08	1.16	1.29%
$\lambda = (0.5 : 0.3 : 0.5)$	3.58	2.04	1.11	0.41%
$\lambda = (0.5 : 0.2 : 0.5)$	3.57	2.01	1.11	0.05%
$I_\infty^{theo} = 15\%$	3.60	2.02	1.13	0%
$\sigma(\lambda) = 25\%$	3.56	1.93	1.08	1.9%
$\sigma(\lambda) = 50\%$	3.58	2.02	1.15	0.37%
$\sigma(\lambda) = 100\%$	3.66	2.08	1.10	0.49%
$I_\infty^{theo} = 15\%$	3.60	2.02	1.13	0%
Triangular function	3.51	1.96	1.09	1.18%
Polynomial function	3.68	2.04	1.22	0.15%
Cosine function	3.68	2.10	1.22	1.37%
Gaussian function	3.47	1.95	1.14	2.30%

Table 1. Error on the rebuild turbulent flow-field for $I_\infty = 15\%$. Unless indicated, $\lambda_i = (1.0, 1.0, 1.0)$, $\sigma(\lambda) = 0\%$, 1000 structures and a triangular function were used. The value of $\sigma(\lambda)$ indicates the percentage of spread in the turbulent structure sizes.

Regarding the second option (the structures are advected by the actual fluid velocity \mathbf{u}), several questions arise. In fact, the validity of the method relies on the randomness of the turbulent structures locations; will this property still be valid when advected by \mathbf{u} ? Thus, with the second approach, the Synthetic-Eddy-Method may not replicate the prescribed Reynolds stress tensor. Some more work needs to be performed on that prior to choose this second option.

Finally during the advection of the turbulent structures, each structure leaving the turbulent space E_σ will be suppressed and replaced by a newly generated one at the inlet of the turbulent space E_σ .

4. Numerical results

The numerical results presented in this section are issued from preliminary computations and will only be used as proof of concept. At first in sub-section 4.1, the ambient turbulence module will be run without any turbine to ensure that the model correctly reproduces the different input parameters. Then, computations will be presented in sub-section 4.2 with the presence of a single turbine for a moderate and a higher turbulence intensity I_∞ levels.

4.1. Results on the ambient turbulence model without turbine

The ambient turbulence module was firstly studied without turbine to ensure that the model correctly reproduces the different input parameters such as the turbulence intensity I_∞ and the

anisotropic ratio ($\sigma_u:\sigma_v:\sigma_w$). This verification is quite straight forward as I_∞ , σ_u , σ_v and σ_w can be deduced from the Reynolds Stress Tensor $\underline{\underline{R}}$ (see eq. (10)).

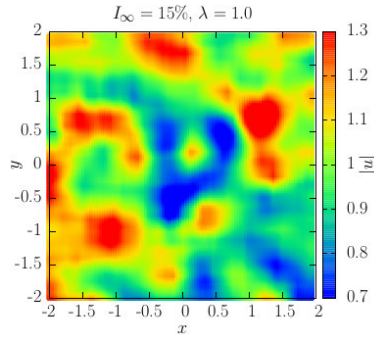


Figure 6. Rebuilt velocity field with $N = 1000$ structures of size $\boldsymbol{\lambda} = (1.0, 1.0, 1.0)$ and $I_\infty = 15\%$.

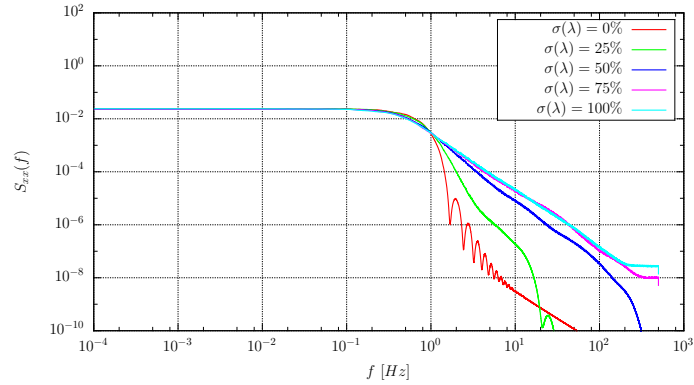


Figure 7. Influence of enabling a variation of the turbulent structure sizes (represented by $\sigma(\lambda)$) on the power spectral density with a Gaussian function, a mean $\boldsymbol{\lambda} = (0.5, 0.5, 0.5)$, a filling ratio of $R_f = 2$ and a given turbulence intensity of I_∞ .

To this aim, 3D turbulent velocity fields were generated on a fluid domain E_S of dimensionless size $6 \times 6 \times 6$. In order to validate the model, the generated flow-field characteristics are analysed. Table 1 gives examples of comparison between the Reynolds Stress Tensor $\underline{\underline{R}}$ prescribed to the model and the recalculated ones from the generated flow. These examples are for diagonal Reynolds Stress Tensors $\underline{\underline{R}}$, which correspond to an ambient turbulent I_∞ of 15%. But the validation was also performed for other intensity values. The anisotropic ratio was arbitrarily set to the one observed in Milne *et al.* [21]. The recomputed values from the generated flow show an excellent agreement with the prescribed ones and thus regardless of the number of used turbulent structures, their size, functions, etc. This good agreement between the prescribed and recomputed values of the Reynolds Stress Tensor $\underline{\underline{R}}$ proves the model capacity to generate velocity fluctuations replicating a given turbulence intensity I_∞ and anisotropic ratio ($\sigma_u:\sigma_v:\sigma_w$).

Figure 6 displays the results obtained with the Synthetic-Eddy-Method for $I_\infty = 15\%$. It shows an example of "turbulent" flow-field generated with the model for the same anisotropic ratio ($\sigma_u:\sigma_v:\sigma_w$)=(1.0,0.75,0.56). One can observe that the generated flow seems to be very realistic, although the SEM model only is a mathematical tool that produces velocity fluctuations, without solving the fluid dynamics equations. Additionally, even though the turbulent structures sizes were equally set to $\boldsymbol{\lambda} = (1.0, 1.0, 1.0)$, this length cannot be clearly observed. At the present time, work is under progress to identify what is the link between this size vector $\boldsymbol{\lambda}$ and the turbulent length scales of the generated flow. This vector $\boldsymbol{\lambda}$ revealed to be an important parameter for this Synthetic-Eddy-Method and its influence needs to be further investigated.

Figure 7 displays the power spectral density function obtained with the use of a Gaussian shape function, with a mean value for $\boldsymbol{\lambda} = (0.5, 0.5, 0.5)$ and increasing the spread in the $\boldsymbol{\lambda}$ values, characterised by $\sigma(\lambda)$. $\sigma(\lambda)$ represents the standard deviation in the size of the turbulent structures sizes $\boldsymbol{\lambda}$. For instance, a $\sigma(\lambda) = 50\%$ for a mean $\boldsymbol{\lambda} = (1.0, 1.0, 1.0)$ means that each λ_i value may vary between 0 and 2 and that the spread is characterised by a standard deviation of $+/- 0.5$ around 1.0. The differences between those curves are quite striking. Indeed, when a single size of structure is used, the obtained power spectral density is spiked for the higher frequencies. This spiking behaviour of single sized-structures was analysed theoretically and

validated numerically. However, increasing the spread in the λ -structures sizes qualitatively improve the results and quantitative comparisons with the experimental results of Medina *et al.* [20] are scheduled.

More generally speaking, a complete study of the different intervening parameters is under progress. The main parameters to be assessed are the turbulent structure size λ , the number N of required turbulent structures for a given volume V_σ of E_σ , etc.

4.2. Results using the ambient turbulence model on a single turbine

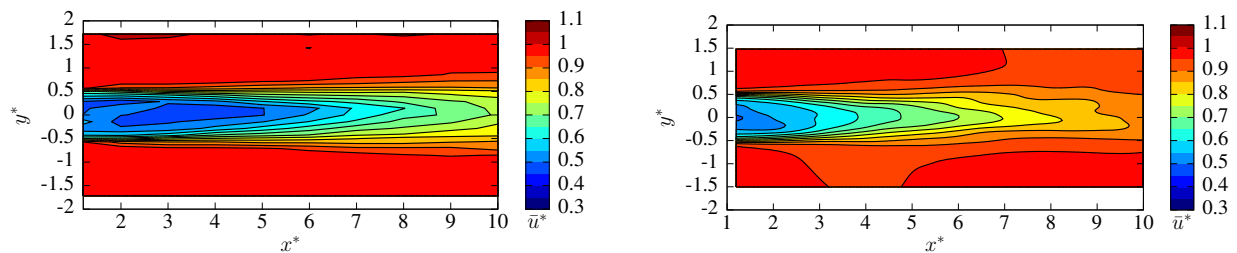


Figure 8. Wake velocity comparison with the experimental velocity maps of Mycek *et al.* [22]. Left is the experimental and right is the numerical velocity map for $TSR = 3.67$, $I_\infty = 3\%$ and $\lambda = (0.1, 0.1, 0.1)$.

Further to the previous study of turbulent flow without any turbine, few computations were run with a turbine. These runs were performed for the two turbulent intensities I_∞ of 3% and 15%, namely the lowest and highest turbulent intensity values for which experimental results are accessible in the IFREMER wave and current flume tank. Numerical parameters were those from Ref. [27] and the computation were scaled on the Reynolds number of the experiments, that is to say $Re = \frac{u_\infty R}{\nu} = 0.28 \times 10^6$. The obtained results are very encouraging and a qualitative analysis can already be performed. Figures 8 and 9 depict the numerically computed wakes for $I_\infty = 3\%$ and 15% and compared to the experiments performed by Mycek *et al.* [22].

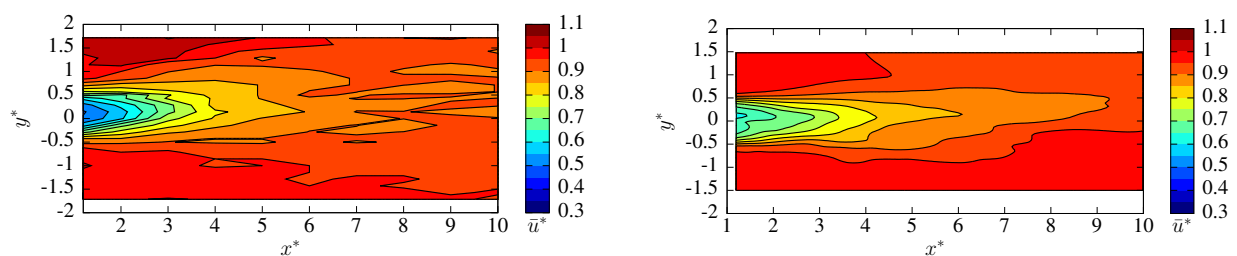


Figure 9. Wake velocity comparison with the experimental velocity maps of Mycek *et al.* [22]. Left is the experimental and right is the numerical velocity map for $TSR = 3.67$, $I_\infty = 15\%$ and $\lambda = (0.1, 0.1, 0.1)$.

The numerical velocity map presented on Figure 8 seems to indicate that the velocity deficit is underestimated for an ambient turbulence set to $I_\infty = 3\%$. For the turbulent intensity of $I_\infty = 15\%$ an over-estimation seems to be observed. This discrepancies could partially be attributed to the fact that, since now, only rather coarse computations were tested. With finer discretisations, as those already used in [27], more accurate velocity deficits are expected. As already mentioned, these are only preliminary results, which need to be further validated with more computations (finer discretisations, a mesh independence analysis, other parameters

validation, etc.). Hopefully, in a near future, more intense turbulent conditions are scheduled (several turbulence intensities and other anisotropic cases) in order to cover a larger range of ambient turbulence intensities.

5. Conclusions and Further works

The important role played by the ambient turbulence intensity on wind or tidal turbines' behaviour was addressed using a numerical investigation. A new module based on this Synthetic-Eddy-Method initially proposed by Jarrin *et al.* [12, 11] was implemented in the numerical code in order to represent the ambient turbulence around turbines. The general characteristics of the Synthetic-Eddy-Method were presented together with its integration in the framework of a 3D unsteady Lagrangian Vortex method.

The capability of the ambient turbulence model to reproduce a perturbed flow that verifies any turbulence intensity I_∞ and any anisotropic ratio ($\sigma_u:\sigma_v:\sigma_w$) was validated. Moreover the compatibility of the presented ambient turbulence model with the use of a turbine on the software was proven and first results in terms of turbine wake were presented. As a matter of short-term perspective, a better qualification of the Synthetic-Eddy-Method is needed in order to better understand the input parameters of the model. For instance, the role of the shape function need to be identified and improvements are already planned.

Another development on the ambient turbulence model could be the modification of the Synthetic-Eddy-Method in order to generate a divergence-free flow. In fact, divergence-free flow is a compulsory hypothesis inherent to the Vortex method in order to apply the Biot & Savart law. Unfortunately, the present implementation is for sure not divergence-free. For low to moderate turbulence intensities, this should not introduce a tremendous error in the flow. But increasing the ambient turbulence intensity might become an issue. Such kind of development were already initiated by Poletto *et al.* [28] but need a lot of work in order to be introduced in the framework of Vortex method.

Acknowledgment

The authors would like to thank the Normandy Regional Council and IFREMER for their financial supports for C. Carlier and A. Fur Ph.D. Grants. The authors also would like to thank the CPER-ERDF program Neptune also financed by the Normandy Regional Council. This work received some support managed by the National Research Agency under the Investments for the Future programmes [ANR-10-IEED-0006-11]. Finally the authors wish to thank the CRIANN (Centre des Ressources Informatiques et Applications Numérique de Normandie) for their available numerical computation resources.

References

- [1] S. Aubrun, S. Loyer, P. Hancock, and P. Hayden. Wind turbine wake properties: Comparison between a non-rotating simplified wind turbine model and a rotating model. *Journal of Wind Engineering and Industrial Aerodynamics*, 120:1 – 8, 2013.
- [2] T. Blackmore, W. M. Batten, G. U. Müller, and A. S. Bahaj. Influence of turbulence on the drag of solid discs and turbine simulators in a water current. *Experiments in Fluids*, 55(1), 2013.
- [3] J. Bousquet. *Méthode des singularités*. Cépaduès - Editions, 1990.
- [4] E. Branlard, P. Mercier, E. Machefaux, M. Gaunaa, and S. Voutsinas. Impact of a wind turbine on turbulence: Un-freezing turbulence by means of a simple vortex particle approach. *Journal of Wind Engineering and Industrial Aerodynamics*, 151:37 – 47, 2016.
- [5] E. Branlard, G. Papadakis, M. Gaunaa, G. Winckelmans, and T. Larsen. Aeroelastic large eddy simulations using vortex methods: unfrozen turbulent and sheared inflow. *J. Phys.: Conf. Ser.*, 625:1 – 12, 2015.
- [6] P. Chatelain, S. Backaert, G. Winckelmans, and S. Kern. Large eddy simulation of wind turbine wakes. *Flow Turbulence and Combustion*, 91:587–605, 2013.
- [7] J. Choquin and S. Huberson. Particles simulation of viscous flow. *Computers & Fluids*, 17(2):397 – 410, 1989.

- [8] W. E. R. Cluster. A southern german wind energy test site in complex terrain. <http://www.windfors.de/english/test-site.html>, WindForS, last viewed April the 21st, 2017.
- [9] G. Cottet and P. Koumoutsakos. *Vortex methods: theory and practice*. Cambridge University Press, 2000.
- [10] P. Degond and S. Mas-Gallic. The weighted particle method for convection-diffusion equations. Part I: The case of an isotropic viscosity. *Math. Comp.*, 53(188):485–507, 1989.
- [11] N. Jarrin. *Synthetic Inflow boundary conditions for the numerical simulation of turbulence*. PhD thesis, University of Manchester, 2008.
- [12] N. Jarrin, S. Benhamadouche, D. Laurence, and R. Prosser. A synthetic-eddy-method for generating inflow conditions for large-eddy simulations. *International Journal of Heat and Fluid Flow*, 27:585–593, 2006.
- [13] N. Kelley and B. Jonkman. A stochastic, full-field, turbulence simulator primarily for use with inflowwind/aerodyn-based simulation tools. <http://nwtc.nrel.gov/turbsim>, NREL, last viewed March the 7th, 2017.
- [14] R. Lewis. *Vortex element methods for fluid dynamic analysis of engineering systems*. Cambridge University Press, 1991.
- [15] K. Lindsay and R. Krasny. A particle method and adaptive treecode for vortex sheet motion in three-dimensional flow. *J. Comput. Phys.*, 172:879–907, 2001.
- [16] T. S. Lund, X. Wu, and K. D. Squires. Generation of turbulent inflow data for spatially-developing boundary layer simulations. *Journal of Computational Physics*, 140:233–258, 1998.
- [17] J. Mann. The spatial structure of neutral atmosphere surface-layer turbulence. *Journal of Fluid Mechanics*, 273:141–168, 1994.
- [18] N. Mansour, J. Ferziger, and W. Reynolds. Large-eddy simulation of a turbulent mixing layer. Technical report, Report TF-11, Thermosciences Div., Dept. of Mech. Eng., Stanford University, 1978.
- [19] O. D. Medina, F. Schmitt, R. Calif, G. Germain, and B. Gaurier. Caractérisation expérimentale du sillage généré par une hydrolienne - influence du taux de turbulence ambiant. In *14mes Journées de l'Hydrodynamique*, Novembre 2014. Val de Reuil, France.
- [20] O. D. Medina, F. Schmitt, R. Calif, G. Germain, and B. Gaurier. Correlation between synchronised power and flow measurements, a way to characterize turbulence effects on marine current turbine. In *11th European Wave and Tidal Energy Conference (EWTEC)*, September 2015. Nante, France.
- [21] I. A. Milne, R. N. Sharma, R. G. J. Flay, and S. Bickerton. Characteristics of the turbulence in the flow at a tidal stream power site. *Philosophical Transactions of the Royal Society A: Mathematical, Physical and Engineering Sciences*, 371(1985):pp, February 2013.
- [22] P. Mycek, B. Gaurier, G. Germain, G. Pinon, and E. Rivoalen. Experimental study of the turbulence intensity effects on marine current turbines behaviour. part I: One single turbine. *Renewable Energy*, 66(0):729 – 746, 2014.
- [23] P. Mycek, B. Gaurier, G. Germain, G. Pinon, and E. Rivoalen. Experimental study of the turbulence intensity effects on marine current turbines behaviour. part II: Two interacting turbines. *Renewable Energy*, 68(0):876 – 892, 2014.
- [24] P. Mycek, G. Pinon, C. Lothod, A. Dezotti, and C. Carlier. Iterative solver approach for turbine interactions: application to wind or marine current turbine farms. *Applied Mathematical Modelling*, 41:331 – 349, 2017.
- [25] L. Myers, K. Shah, and P. Galloway. Design, commissioning and performance of a device to vary the turbulence in a recirculating flume. In *10th European Wave and Tidal Energy Conference*, September 2013.
- [26] G. E. na, S. Aubrun, S. Loyer, and P. Devinant. Wind tunnel study of the wake meandering downstream of a modelled wind turbine as an effect of large scale turbulent eddies. *Journal of Wind Engineering and Industrial Aerodynamics*, 101:24 – 33, 2012.
- [27] G. Pinon, P. Mycek, G. Germain, and E. Rivoalen. Numerical simulation of the wake of marine current turbines with a particle method. *Renewable Energy*, 46(0):111 – 126, 2012.
- [28] R. Poletto, T. Craft, and A. Revell. A new divergence free synthetic eddy method for the reproduction of inlet flow conditions for les. *Flow, Turb. and Combustion*, 91:519–539, 2013.
- [29] C. Rehbach. Calcul numérique d'écoulements tridimensionnels instationnaires avec nappes tourbillonnaires. *La Recherche Aérospatiale*, 5:289–298, 1977.
- [30] M. Togneri and I. Masters. Parametrising turbulent marine flows for a blade element momentum model of tidal stream turbines. In *9th European Wave and Tidal Energy Conference (EWTEC)*, September 2011. Southampton, UK.
- [31] M. Togneri and I. Masters. Synthetic turbulence generation for turbine modelling with BEMT. In *3rd Oxford Tidal Energy Workshop*, Oxford, UK, 7-8 April 2014.
- [32] G. S. Winckelmans and A. Leonard. Contributions to vortex particle methods for the computation of three-dimensional incompressible unsteady flows. *Journal of Computational Physics*, 109(2):247–273, 1993.