



HAL
open science

Two Carbohydrate-Based Natural Extracts Stimulate in vitro Pollen Germination and Pollen Tube Growth of Tomato Under Cold Temperatures

Ferdousse Laggoun, Nusrat Ali, Sabine Tourneur, Grégoire Prudent, Bruno Gügi, Marie-Christine Kiefer-Meyer, Alain Mareck, Florence Cruz, Jean-Claude Yvin, Eric Nguema-Ona, et al.

► To cite this version:

Ferdousse Laggoun, Nusrat Ali, Sabine Tourneur, Grégoire Prudent, Bruno Gügi, et al.. Two Carbohydrate-Based Natural Extracts Stimulate in vitro Pollen Germination and Pollen Tube Growth of Tomato Under Cold Temperatures. *Frontiers in Plant Science*, 2021, 12, pp.552515. 10.3389/fpls.2021.552515 . hal-03369164

HAL Id: hal-03369164

<https://normandie-univ.hal.science/hal-03369164>

Submitted on 7 Oct 2021

HAL is a multi-disciplinary open access archive for the deposit and dissemination of scientific research documents, whether they are published or not. The documents may come from teaching and research institutions in France or abroad, or from public or private research centers.

L'archive ouverte pluridisciplinaire **HAL**, est destinée au dépôt et à la diffusion de documents scientifiques de niveau recherche, publiés ou non, émanant des établissements d'enseignement et de recherche français ou étrangers, des laboratoires publics ou privés.



Two Carbohydrate-Based Natural Extracts Stimulate *in vitro* Pollen Germination and Pollen Tube Growth of Tomato Under Cold Temperatures

OPEN ACCESS

Edited by:

Eric Ruelland,
UMR7618 Institut d'Écologie et des
Sciences de l'Environnement de Paris
(IEES), France

Reviewed by:

Stefan Simm,
Universitätsmedizin Greifswald,
Germany
Ioannis Karapanos,
Agricultural University of Athens,
Greece

*Correspondence:

Arnaud Lehner
arnaud.lehner@univ-rouen.fr

[†]These authors have contributed
equally to this work

Specialty section:

This article was submitted to
Plant Abiotic Stress,
a section of the journal
Frontiers in Plant Science

Received: 16 April 2020

Accepted: 14 September 2021

Published: 07 October 2021

Citation:

Laggoun F, Ali N, Tourneur S,
Prudent G, Gügi B,
Kiefer-Meyer M-C, Mareck A, Cruz F,
Yvin J-C, Nguema-Ona E, Mollet J-C,
Jamois F and Lehner A (2021) Two
Carbohydrate-Based Natural Extracts
Stimulate *in vitro* Pollen Germination
and Pollen Tube Growth of Tomato
Under Cold Temperatures.
Front. Plant Sci. 12:552515.
doi: 10.3389/fpls.2021.552515

Ferdousse Laggoun^{1,2}, Nusrat Ali³, Sabine Tourneur^{1,4}, Grégoire Prudent¹, Bruno Gügi¹, Marie-Christine Kiefer-Meyer¹, Alain Mareck¹, Florence Cruz³, Jean-Claude Yvin³, Eric Nguema-Ona^{3†}, Jean-Claude Mollet^{1†}, Frank Jamois^{3†} and Arnaud Lehner^{1*†}

¹UNIROUEN, Normandie Université, Laboratoire de Glycobiologie et Matrice Extracellulaire Végétale, SFR NORVEGE FED 4277, Carnot I2C, IRIB, Rouen, France, ²Sanofi Pasteur, Val-de-Reuil, France, ³Centre Mondial de l'Innovation, Laboratoire Nutrition Végétale, Groupe Roullier, Saint-Malo, France, ⁴Laboratoire de Biologie et Pathologie Végétales, Université de Nantes, Université Bretagne Loire, Nantes, France

To date, it is widely accepted by the scientific community that many agricultural regions will experience more extreme temperature fluctuations. These stresses will undoubtedly impact crop production, particularly fruit and seed yields. In fact, pollination is considered as one of the most temperature-sensitive phases of plant development and until now, except for the time-consuming and costly processes of genetic breeding, there is no immediate alternative to address this issue. In this work, we used a multidisciplinary approach using physiological, biochemical, and molecular techniques for studying the effects of two carbohydrate-based natural activators on *in vitro* tomato pollen germination and pollen tube growth cultured *in vitro* under cold conditions. Under mild and strong cold temperatures, these two carbohydrate-based compounds significantly enhanced pollen germination and pollen tube growth. The two biostimulants did not induce significant changes in the classical molecular markers implicated in pollen tube growth. Neither the number of callose plugs nor the *CALLOSE SYNTHASE* genes expression were significantly different between the control and the biostimulated pollen tubes when pollens were cultivated under cold conditions. PECTIN METHYLESTERASE (PME) activities were also similar but a basic PME isoform was not produced or inactive in pollen grown at 8°C. Nevertheless, NADPH oxidase (*RBOH*) gene expression was correlated with a higher number of viable pollen tubes in biostimulated pollen tubes compared to the control. Our results showed that the two carbohydrate-based products were able to reduce *in vitro* the effect of cold temperatures on tomato pollen tube growth and at least for one of them to modulate reactive oxygen species production.

Keywords: carbohydrate, pollen germination and tube growth, ROS, tomato, callose, pectin methylesterase, cold temperature

INTRODUCTION

Temperature and hydric stresses are the main limiting factors for crop production (Lamaoui et al., 2018). Many reports from the IPCC (Intergovernmental Panel on Climate Change) have pointed out that most agricultural regions will experience more extreme environmental fluctuations including severe variation of temperature and/or water availability (IPCC, 2014; Hoegh-Guldberg et al., 2018). As drought, cold temperature stresses can be detrimental to all phases of plant development (Yadav, 2010; Hussain et al., 2018) including the critical steps of gametophyte development and growth in flowering plants (Zinn et al., 2010; Giorno et al., 2013; Hatfield and Prueger, 2015; Mesihovic et al., 2016). This is an important challenge as the majority of our food supply is dependent on sexual reproduction. As recently reviewed by Pacini and Dolferus (2019) and demonstrated by several research papers, the process of sexual reproduction is very sensitive to low temperatures and impacts fruit and seed sets (Thakur et al., 2010; Barlow et al., 2015; Hatfield and Prueger, 2015; Keller et al., 2018). As reviewed by Zinn et al. (2010), cold temperature stresses have several major effects on reproductive tissues such as the timing of flowering, abnormal formation of parental organs, asynchrony of male and female maturation, stigma receptivity, reduction in pollen viability and germination and decrease in pollen tube growth both *in vivo* and *in vitro* (Zamir et al., 1981; Kakani et al., 2002; Boavida and McCormick, 2007). This detrimental effect of cold temperature stress on plant reproduction has been shown in different grain crops such as rice (Imin et al., 2004), wheat (Chakrabarti et al., 2011; Barlow et al., 2015), chickpea (Clarke and Siddique, 2004), and soybean (Ohnishi et al., 2010). Similarly to what was shown during drought, redox-regulatory network is modified in plant during cold stress acclimation, and the response of plants' low temperature stress is the production and accumulation of reactive oxygen species (ROS; Hussain et al., 2018). Among ROS, anion superoxide ($O_2^{\cdot-}$) is produced in part by NADPH oxidases (called respiratory burst oxidase homologs, Rbohs), hydrogen peroxide (H_2O_2) produced from $O_2^{\cdot-}$ by superoxide dismutases, and/or the hydroxyl radical (OH^{\cdot}) produced by the non-enzymatic Fenton reaction (Mittler, 2017; Dreyer and Dietz, 2018). Excessive ROS production can cause oxidative damages to proteins, DNA, and lipids. They can alter cell wall stiffening in the presence of peroxidases by cross-linking glycoproteins or local polysaccharide cleavage with OH^{\cdot} , but they also could serve as signaling molecules (Suzuki and Mittler, 2006; Le Gall et al., 2015; Tenhaken, 2015; Airianah et al., 2016; Mittler, 2017; Novaković et al., 2018). In tomato, recent studies pointed out the role of ROS in vegetative tissues during cold stresses (Liu et al., 2020; Zhang et al., 2020). In reproductive tissues, ROS and most likely OH^{\cdot} were involved in reproductive tissues, and ROS and most likely OH^{\cdot} were involved in the pollen tube rupture to release the sperm cells in the ovule (Duan et al., 2014; Ge et al., 2019). Interestingly, in the freeze, cold or heat-tolerant plants, an over-accumulation of ROS scavenging enzymes such as APX (ascorbate peroxidase) and catalase (Saruyama and Tanida, 1995; Suzuki and Mittler, 2006) has been reported.

In tip-growing cells, such as root hairs and pollen tubes, the important role of ROS has been highlighted (Foreman et al., 2003; Boisson-Dernier et al., 2013). In pollen, ROS were shown to be involved in signaling for pollen grain germination and pollen tube growth (Potocký et al., 2007; Speranza et al., 2012; Muhlemann et al., 2018). The use of diphenylene iodonium (DPI), a NADPH oxidase inhibitor, reduced pollen tube growth (Potocký et al., 2007) and eventually led to pollen tubes burst (Speranza et al., 2012). In *Arabidopsis thaliana*, pollen-expressed NADPH oxidases, RbohH and RbohJ, were responsible for the oscillation of H_2O_2 at the tip of growing pollen tubes and the double *rbohH::rbohJ* mutant displayed almost 100% of bursting pollen tubes (Boisson-Dernier et al., 2013) revealing an important function of ROS as signaling molecules in tip-growing plant cells (Kaya et al., 2014). Interestingly, as observed with ROS, a tip-focused gradient of cytosolic calcium is also necessary for pollen tube growth (Konrad et al., 2011), and it has been suggested that calcium influx activates RBOH leading to the production of ROS in the cell wall which in turn could activate calcium influx (Novaković et al., 2018).

The fast growth of pollen tubes is promoted by a massive secretion of membrane and cell wall materials at the tip. Among them, pectins like the homogalacturonan (HG) motif are deposited under a highly methylesterified form and are demethylesterified in the sub-apical region by pectin methylesterases (PMEs) allowing the stiffening of the cell wall by interaction with calcium of the negative charges of galacturonic acids, the main monosaccharide of pectins (Dardelle et al., 2010; Chebli et al., 2012; Mollet et al., 2013; Dehors et al., 2019). The importance of PMEs was highlighted in *Arabidopsis* by the study of pollen-specific *pme* mutants. PME48 was shown to be involved in pollen germination (Leroux et al., 2015) and VANGUARD and AtPPME1 in pollen tube growth (Jiang et al., 2005; Tian et al., 2006). Additionally, in order to maintain the vegetative cell, carrying the two sperm cells, in the apical region of the pollen tube, periodic callose plugs are synthesized *via* plasma membrane-localized callose synthases (CalS)/Glucan synthase-like (GSL; Chen and Kim, 2009; Abercrombie et al., 2011; Zaveska Drabkova and Honys, 2017; Tucker et al., 2018; Dehors et al., 2019). In *A. thaliana* and tomato, a relationship was shown between the number of callose plugs, the position of the first callose plug and the pollen tube length (Qin et al., 2012).

Today, addressing the issue of climate change threat on plant reproduction requires a range of avoidance and corrective/preventive solutions. One of the solutions to overcome this problem is to select species, ecotypes and/or cultivars that can respond to temperature stress as it was investigated in rice (Prasad et al., 2006), tomato (Zamir et al., 1982), chickpea (Clarke and Siddique, 2004), bean (Porch and Jahn, 2001), or groundnut (Kakani et al., 2002).

Another solution to respond to the detrimental effects of thermal stresses is to find bioactive compounds that can stimulate pollen germination and pollen tube growth under stress conditions. Interestingly, cold and drought stresses shared common effects and cellular responses in plants (Beck et al., 2007; Hussain et al., 2018). Several studies showed the beneficial effect of the application of different compounds upon abiotic

stresses. As reviewed by Hussain et al. (2018), plant growth regulators, mineral nutrients, and compatible solutes such as proline and soluble sugars were shown to improve plant responses to chilling and drought stresses. In *Prunus dulcis*, low exogenous supply of polyamines (putrescine, spermidine, or spermine) was shown to stimulate pollen tube growth at 10°C compared to the untreated conditions, while the same concentrations of compounds were detrimental at 25°C (Sorkheh et al., 2011).

In this study, we investigated the impact of two carbohydrate-based natural products (named P1 and P2) which were selected from a previous screen consisting of an in-house natural extract library, on their abilities to stimulate *in vitro* *Solanum lycopersicum* (tomato) pollen germination and pollen tube growth under thermic stress (4, 8, 13, 22, and 28°C). No pollen germination was observed at 4°C in any condition; however, both P1 and P2 were able to stimulate *in vitro* pollen germination and pollen tube growth at low temperatures (8 and 13°C) compared to untreated pollen. Therefore, to understand the stimulatory effects of these two carbohydrate-based activators, we investigated molecular markers of pollen tube growth such as gene expression of several *CalS* and *Rboh* genes, callose plug number, and PME activity.

MATERIALS AND METHODS

Plant Growth Conditions

Solanum lycopersicum var. *cerasiforme* “West Virginia 106” (WVa106) seeds (a gift of Dr. Pierre Baldet, INRAE, Bordeaux, France) were sown 1 cm under the surface of sterilized soil and cultured in a growth chamber. Plants were grown in optimal conditions with a photoperiod of a 16-h light/8-h dark cycle at 25 and 22°C during the light and dark period, respectively. Relative humidity was maintained at 60%, and plants were watered every 2 d. At flowering, flowers were harvested before each experiment to collect pollens as described below.

Pollen Tube Culture and Treatments

Pollen grains were collected from freshly dehisced anthers, and the stamens of five flowers were submerged in 5 ml of BK medium [1.62 mM H₃BO₃, 1.25 mM Ca(NO₃)₂, 4H₂O, 2.97 mM KNO₃ and 1.65 mM MgSO₄, 7H₂O] containing 10% (w/v) sucrose (Brewbaker and Kwak, 1963). Pollen grains were suspended in the BK medium by vortex, and the stamens were removed with tweezers. Tomato pollen tubes were grown in 24-well plates (ThermoFisher®), in the dark, without agitation at five different temperatures: 4, 8, 13, 22, and 28°C. Observations were performed after 2, 4, and 6 h of growth. Pollen was considered germinated if the length of the pollen tube exceeded the diameter of the pollen grain.

The treatments consisted of two natural carbohydrate-based extracts (P1 and P2) selected from a previous screen of an in-house natural extract library. P1 and P2 are aqueous solution made of water containing 2.5% (w/v) of the active ingredient 1 and 4% (w/v) of the active ingredient 2, respectively. P1 and P2 were diluted with milli-Q water to reach a final

concentration of active ingredient of 300 µg.ml⁻¹. Dose–response tests were performed at final concentrations (active ingredient) of 1, 2, 5, 10, 75, 150, and 300 µg.ml⁻¹ in the BK medium. Milli-Q water was used as a negative control (Supplementary Table S1). Further experiments were all carried out at the final concentration of 2 µg.ml⁻¹. The mix of P1 and P2 (Supplementary Table S2) corresponds to 2 µg.ml⁻¹ of active ingredient 1 and 2 µg.ml⁻¹ of active ingredient 2.

Monosaccharide Composition

Products and active ingredients were analyzed by gas chromatography coupled to a flame ionization detector (GC-FID) spiking 50 µl of 2-mM inositol as an internal standard as previously described (Dardelle et al., 2010). Briefly, each sample (0.5 mg) was subjected to hydrolysis with 2 M trifluoroacetic acid (TFA) for 2 h at 110°C. TFA was washed twice with a 50% (v/v) *iso*-propanol/water solution. The released monosaccharides were converted to their *O*-methyl glycosides by incubation in 1 M methanol/HCl at 80°C overnight. The methyl glycosides were then converted into their trimethylsilyl derivatives by heating the samples for 20 min at 110°C in hexamethyldisilazane/trimethylchlorosilane/pyridine (3/1/9). After evaporation of the reagent, the samples were suspended in cyclohexane before being injected on a CP-Sil 5 CB column (Agilent Technologies). Chromatographic data were integrated with GC Star Workstation software (Varian). A temperature program (3 min at 40°C; up to 160°C at 15°C min⁻¹; up to 220°C at 1.5°C min⁻¹; up to 280°C at 20°C min⁻¹; 3 min at 280°C) optimized for the separation of the most common cell wall authentic monosaccharides such as arabinose (Ara), rhamnose (Rha), fucose (Fuc), xylose (Xyl), glucuronic acid (GlcA), mannose (Man), mannitol, galactose (Gal), galacturonic acid (GalA), and glucose (Glc).

Cytochemical Staining of Callose

Pollen tubes were fixed after a duration of culture corresponding to 4 times the D (duration necessary to get 50% of the highest germination rate of the control for each temperature; Table 1). The fixation medium composed of 100 mM PIPES, 4 mM MgSO₄, 7 H₂O, 4 mM EGTA, 10% (w/v) sucrose, and 5% (v/v) of paraformaldehyde; pH 7.5 was added to the BK medium and incubated overnight at 4°C. Pollen tubes were centrifuged at 4,000 g for 7 min. The pellet was resuspended in 250 µl of fresh BK. At 22 and 13°C, 0.3% decolorized aniline blue (DAB)

TABLE 1 | Values (h) of the 4*D at 8, 13, and 22°C for the control or pollen grains treated with 2 µg.ml⁻¹ of P1 or P2.

Treatment	Duration		
	4*D ₈ °C	4*D ₁₃ °C	4*D ₂₂ °C
Control	18h40	7h	3h30
P1	12h20	5h20	3h20
P2	15h	4h	3h

D represents the duration necessary to reach 50% of the highest germination rate of the control for a given temperature.

prepared in 100-mM phosphate buffer pH 12 (Johnson-Brousseau and McCormick, 2004) was added to the medium at a final concentration of 0.05%. At 8°C, a double staining with DAB and calcofluor white was used at final concentrations of 0.05 and 0.1%, respectively. Observations were performed after 2 h of incubation in the dark at room temperature.

Microscope Observation and Image Acquisition

An inverted microscope Leica DMI 6000B equipped with the Leica DFC 450 camera was used to observe under bright-field the time course of pollen germination and pollen tube growth. Callose deposition was observed under epi-fluorescence using a filter with absorption 405 nm and emission 523 nm.

The program ImageJ (Abramoff et al., 2004) was used to measure pollen tube germination rate, pollen tube length, callose plug numbers, and diameters of the colored halos in the gel diffusion assay.

RNA Extraction and Gene Expression Analysis

The RNA was extracted from the pollen culture of two tomato flowers in 2 ml of BK germination medium for each treatment (control, P1 and P2) at 8, 13, and 22°C. Samples were collected at D₈°C, D₁₃°C, and D₂₂°C (Table 2). At first, the germination medium was removed from pollen culture after centrifugation and replaced with 1 ml of NucleoZOL (Macherey-Nagel, Düren, Germany), following which the pollen tubes were split by flow-reflux and vortexed. Total RNA extraction was carried out using Nucleospin® RNA set for NucleoZOL kit following the manufacturer's protocol (Macherey-Nagel, Düren, Germany) with slight modifications. The quality of extracted RNA was checked in 4200 TapeStation (Agilent Technologies, CA, USA), followed by DNase treatment (Turbo DNA-free® kit) and cDNA synthesis from 1 µg RNA, using iScript™ gDNA clear cDNA synthesis kit (Bio-Rad, CA, USA). The diluted cDNA samples were used to study gene expression by quantitative real-time PCR (CFX384 Touch™, Bio-Rad, CA, USA) in a total volume of 10 µl using SsoAdvanced Universal SYBR Green Supermix (Bio-Rad, CA, USA). All the qPCR reactions were performed in technical triplicates using independent cDNA reactions for each of the six biological replicates and 300 nM of gene-specific primer pairs. The thermal cycling protocol included a single polymerase activation step at 98°C for 3 min followed by 40

amplification cycles, a final extension step at 72°C for 5 min as well as melt-curve analysis. Each amplification cycle comprised a denaturation step at 98°C for 15 s, a primer annealing step for 30 s and a brief extension at 72°C for 15 s. For each primer pair, primer efficiency was determined by performing standard curve analysis using serial dilutions. All qPCR expression data were acquired and analyzed using CFX Maestro Software Version 1.1 (Bio-Rad, CA, USA).

The genes of interest for qRT-PCR analysis were identified in the tomato genome by similarity to their counterparts in the genome of *A. thaliana*. The tomato *CalS* candidate genes were selected using the protein sequence from the *Arabidopsis thaliana CalS5* gene (At2g13680) and the pollen-expressed *Rboh* genes (*RbohH* At5g60010 and *RbohJ* At3g45810) in a TBLASTN analysis (Altschul et al., 1997). The search was carried out in the NCBI Transcript references Sequences (refseq_rna) restricted to *Solanum lycopersicum* to retrieve transcripts corresponding to potential *CalS* and pollen-expressed *Rboh* cDNA sequences from tomato.

Nine putative tomato *CalS* cDNA sequences (XM_019211256.2, XM_004228545.4, XM_026029202.1, XM_026031249.1, XM_010325327.3, XM_004236267.4, XM_010318449.3, XM_10318448.3 and XM_004232827.4) were selected in the NCBI database. They correspond, respectively, to the Sequence Id Solyc11g005980.2, Solyc11g005985.1, Solyc01g006370.3, Solyc01g073750.3, Solyc07g056260.3, Solyc03g111570.3 and Solyc02g078230.2 in the "Tomato Genome cDNA (ITAG release 3.20)" BLAST dataset (<https://solgenomics.net/>; Fernandez-Pozo et al., 2015). Two cDNA sequences coding potential *Rboh* were identified in GenBank (XM_019214404.2 and XM_004251404.4), corresponding, respectively, to the Sequence Id Solyc06g075570.1 and Solyc11g072800.1. The expression of the genes of interest was normalized against four reference genes: EXP, LZ, EF1α, and CK2A (Solyc07g025390.2, Solyc05g055770.2, Solyc06g005060.2, Solyc02g064700.2). Specific primers for all candidate and reference genes are listed in Supplementary Table S3. The primer search was performed using the Primer-BLAST program at the NCBI.¹

Protein Extraction and Protein Assay

Pollen from 10 flowers was incubated as described in "Pollen tube culture and treatments" for a duration corresponding to 4*D (Table 1) and frozen at -20°C until used. Tubes were thawed and pollen tubes were collected by centrifugation at 10000g for 3 min. The supernatant was discarded, and the cell wall proteins from the pellet were extracted by grinding pollen tubes with a Fastprep (MP Biomedicals) in 200 µl of 50 mM Na₂HPO₄ 7H₂O, 20 mM citric acid, 1 M NaCl, 0.01% (w/v) Tween 20, and 2 mM PMSE, pH 7. The extract was incubated under agitation (200 rpm) for 1 h at 4°C. Cellular fragments were removed by centrifugation at 14000g for 30 min. The crude protein extract was concentrated by ultrafiltration on Pierce Concentrator 10K MWCO, 0.5 ml (Thermo Fisher) in milli-Q water. Proteins were quantified by the micromethod

TABLE 2 | D values (h) at 8, 13, and 22°C for the control and treated pollen grains with 2 µg.ml⁻¹ of P1 or P2.

Treatment	Duration		
	D ₈ °C	D ₁₃ °C	D ₂₂ °C
Control	4h40	1h45	0h53
P1	3h05	1h20	0h50
P2	3h45	1h	0h45

D represents the duration required to reach 50% of the highest germination rate of the control for a given temperature.

¹<https://www.ncbi.nlm.nih.gov/tools/primer-blast/>

of Bradford (1976), with the Bio-Rad kit, and bovine serum albumin was used as a standard.

PME Gel Diffusion Assay

Total PME activity was quantified by a gel diffusion assay (Downie et al., 1998) with some modifications. A solution containing 0.1% (w/v) citrus pectin with a degree of methylesterification (DM) of 85% (Sigma), 10 mM citric acid, 20 mM Na₂HPO₄ 7H₂O, and 1% (w/v) agarose at pH 7 was transferred to Petri dishes (12 cm x 12 cm) and allowed to solidify. Wells were made in the gel with a 4-mm-diameter cork borer. A volume corresponding to 20 µg of proteins was loaded in each well. The standard curve was obtained using a commercial orange PME (Sigma, Cat. No. P5400) ranging from 0.3 to 5 U. Petri dishes were incubated for 16 h at 37°C. After incubation, the gels were rinsed with milli-Q water and stained with 0.01% (w/v) ruthenium red (Sigma) for 1 h. The dye was then poured off and the gels were rinsed with milli-Q water and scanned.

IEF and Zymogram

Isoelectric focusing (IEF) electrophoresis and zymography were performed as described by Paynel et al. (2014). Briefly, IEF of native proteins was performed on SERVLYT™ PRECOTES™ gels with a 3 to 10 pH range (SERVA). Samples with identical PME activities (0.05 U) were loaded in each well. Three µL of IEF marker liquid mix (SERVA) were loaded. After IEF, the track with pI markers was cut and stained with coomassie blue. The rest of the gel was washed for 15 to 30 min in 20 mM Tris-HCl, 5 mM EDTA at pH 8.5. Activity of PME was then monitored in liquid (zymogram) by using a solution of 1% (w/v) citrus pectin with a DM of 85% (Sigma-Aldrich) dissolved in 20 mM Tris-HCl, 5 mM EDTA, 160 mM NaCl, pH 7.5. The gel was incubated for 2 h at 28°C, and the demethylated pectins resulting from PME activities were precipitated with 0.1 M malic acid during 1 h and washed with milli-Q water. The gel was finally stained overnight with 0.02% (w/v) ruthenium red and scanned.

Statistical Analyses

For all experiments, data correspond to the mean of six biological replicates performed at different dates. Significant differences between the control and the treatment were determined by one-way ANOVA followed by Dunnett's multiple comparison test. Data are marked by different letters when significantly different with respect to the control conditions (p -value < 0.05). For germination, it represents between 1,000 and 2000 pollen grains counted for each replicates and time points. For pollen tube length, the number of measure ranged from 80 to 120 for each replicate.

RESULTS

Among the five temperatures tested, no germination was observed in any treatments after 16 h of growth at 4°C. Consequently, in

the following, only the data for 8, 13, 22 and 28°C are presented. The sugar composition of the bioactive-based carbohydrate extracts was analyzed using gas chromatography, and the effects of the products on the ability of the pollen grain to germinate and to produce healthy pollen tubes were analyzed.

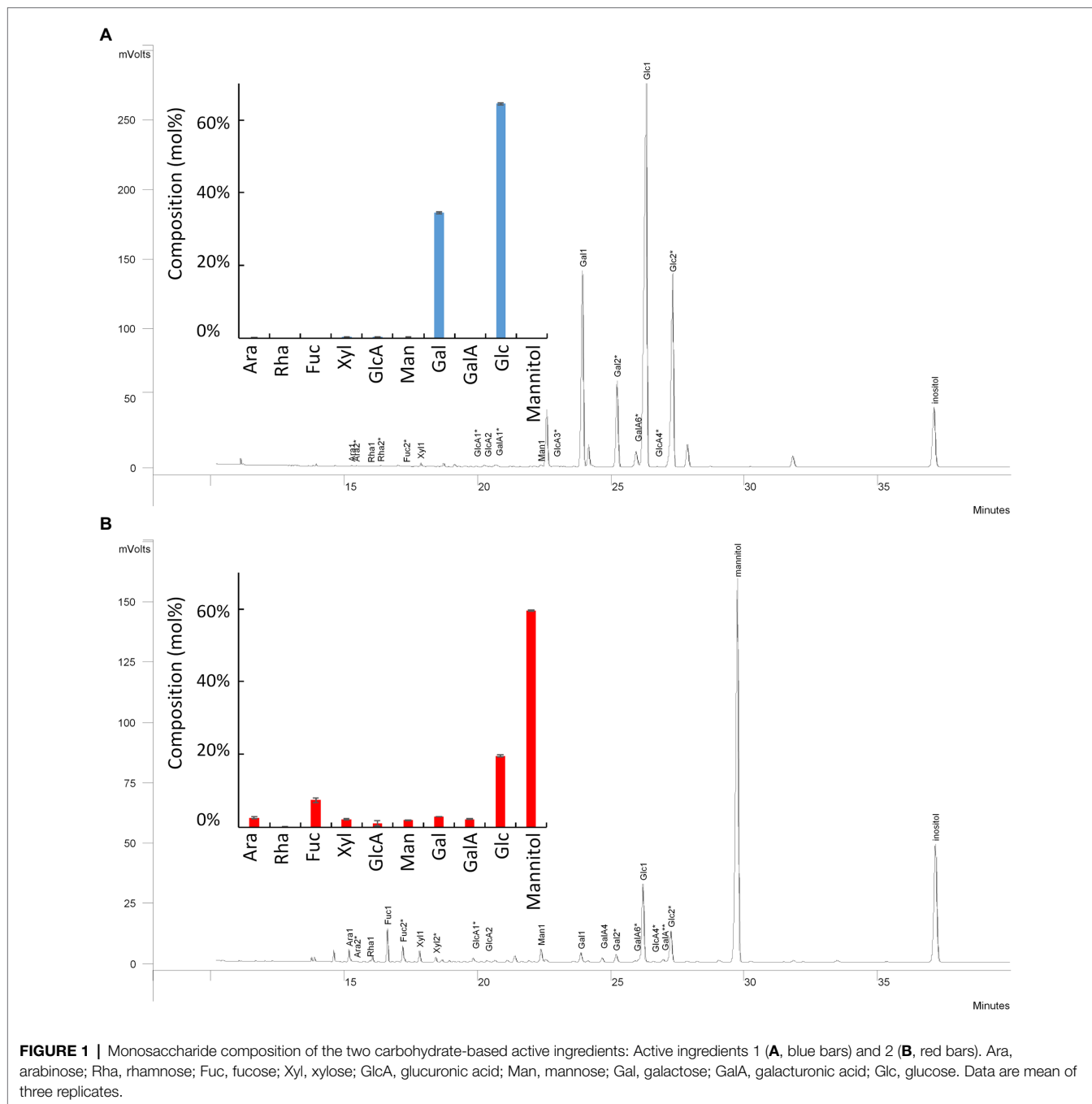
Monosaccharide Composition of the Two Carbohydrate-Based Natural Activators

A screen of an in-house bioactive carbohydrate-based natural extracts was conducted, and two products were selected regarding their abilities to enhance tomato pollen germination. P1 and P2 correspond to the water-solubilized bioactivators containing the carbohydrate-based active ingredients 1 and 2, respectively. Monosaccharide composition of P1 and the active ingredient 1 showed that the trifluoroacetic acid (TFA)-soluble fractions were composed of 72% Glc, 26% Gal, and 1.1% of GlcA (Figure 1A). The percentage of the other monosaccharides was lower than 0.2%. Monosaccharide composition of P2 and the active ingredient 2 revealed that they contained 64% of mannitol, 19.5% Glc, 6.9% Fuc, 2.6% Gal, and 2.3% Xyl (Figure 1B).

Bioactive capacities of the products were tested on the germination of tomato pollen grain at 22°C, and the optimal concentration for further investigation was determined at 2 µg.ml⁻¹. When pollen grain germinated at 22°C in the presence of 2 µg.ml⁻¹ of P1, the percentage of normal pollen tubes was 4.8% higher than in the control (Supplementary Table S1). P1 and P2 were then used at 2 µg.ml⁻¹. The individual effect of the active ingredients, the products, and a mix of P1 and P2 were then assessed on the percentage of germination upon cold or heat temperature (Supplementary Table S2). P1 and P2 showed a significant increase in the percentage of normal pollen tubes after 2 h at 13°C, and P2 showed a significant increase in the percentage of normal pollen tubes after 2 h at 8°C (Supplementary Table S2). However, a mix of the products or the use of the active ingredients was not more beneficial than the treatment with the water-solubilized active ingredient P1 and P2. Therefore, further investigations were all carried out with a final concentration of the active ingredient at 2 µg.ml⁻¹ in the products.

Cold Temperatures Impact Germination of Tomato Pollen in Control Condition

Figure 2 shows the effect of temperature and treatments on pollen tube morphology and viability. At the optimal temperature (22°C) for *in vitro* growth of tomato pollen tubes, germination was fast with 67% of germinated pollen grains and viable pollen tubes after 2 h of culture for the control (Figures 2C,G), and 15% of burst pollen tubes was observed (Supplementary Figure S1C). The number of normal and viable pollen tubes slowly decreased after 4 and 6 h together with an increase in the rate of burst tubes (35% after 6 h; Supplementary Figure S1C). Cold temperature (i.e., 13 and 8°C) had a strong effect on pollen germination rates. In fact, when pollen germination and pollen tube growth were performed at 13°C, 35% of pollen grains were germinated after 2 h (Figure 2B) and 60% after 6 h (Figure 2B). At 8°C, 10% of

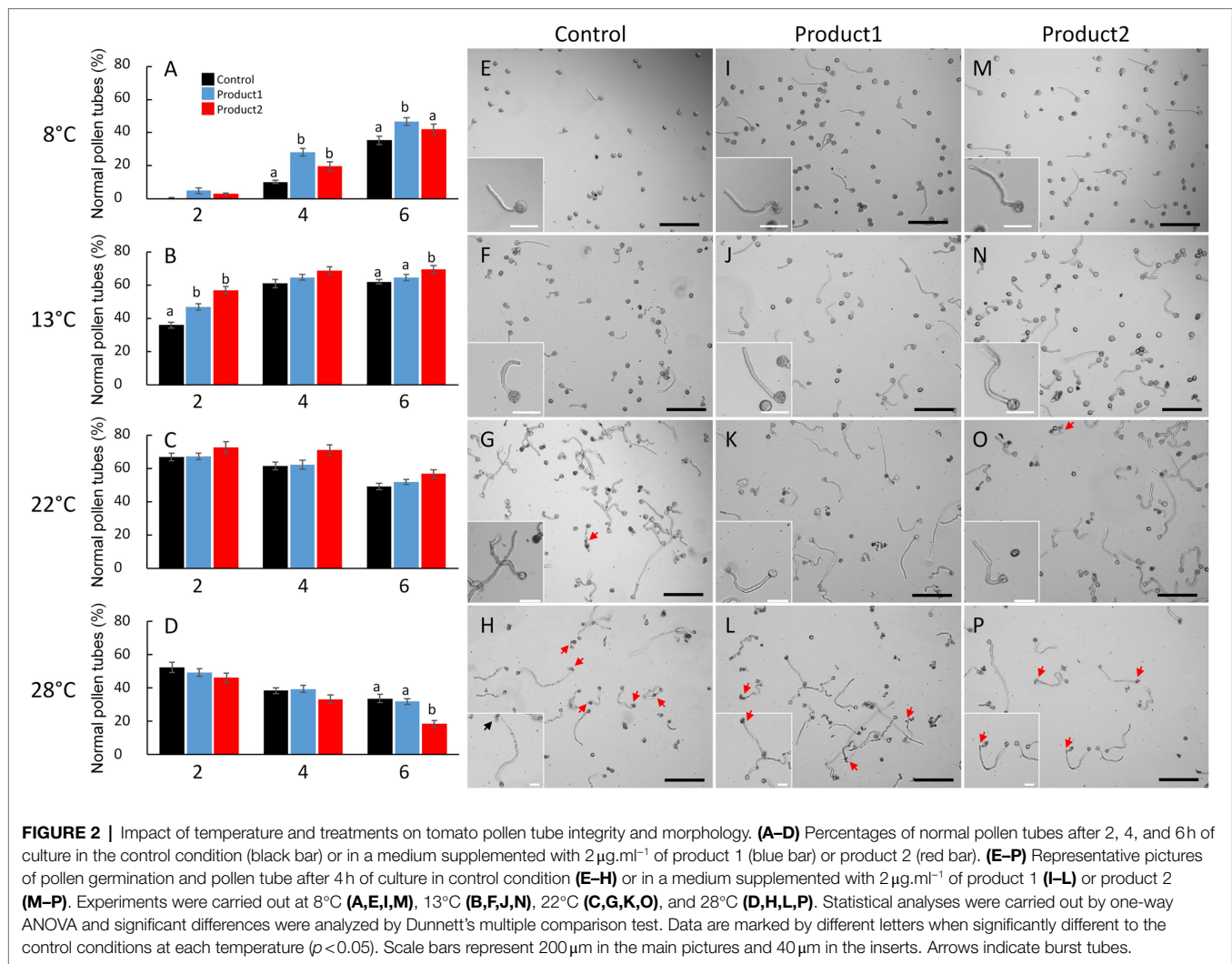


pollen grains were germinated after 4h, whereas 65% were germinated and produced a normal tube at 22°C (Figures 2A,C). Cold treatments at 8 and 13°C did not affect the morphology (Figures 2E,F) or the integrity of the pollen tube as the percentage of burst pollen tubes was below 10% after 6h of *in vitro* growth (Supplementary Figures S2A,B). At 28°C, pollen germination in the control conditions was strongly affected. The percentage of normal pollen tubes was 52% after 2h and ~50% of pollen tubes were burst after 4h of culture (Figure 2H; Supplementary Figure 1D). After 6h, the rate of normal pollen tubes was less than 35% (Figure 2D) and

numerous pollen tubes burst even after treatments with P1 and P2 (Figures 2D,H,L,P). Based on these data, the mild heat stress condition (28°C) was not further investigated and the study focused on the two cold temperatures (8 and 13°C) and the optimal temperature (22°C).

P1 and P2 Promote Pollen Germination Under Cold Temperatures

Treatments with P1 or P2 promoted pollen germination at 8°C with a 3- and 2-fold significant increase in the levels of normal pollen tubes after 4h, respectively (Figure 2A).



After 6 h, higher levels of normal pollen tubes were observed in treated conditions, especially with P1 (Figure 2A). Indeed, 48% of pollen grains were germinated and pollen tubes were morphologically normal following P1 application when compared to the control (36%; Figure 2A). Pollen tube morphology was not affected by the products (Figures 2I,M). When pollen germination and pollen tube growth were performed at 13°C, the pollen tube morphology and integrity were also very well preserved (Figures 2J,N), and the rate of burst pollen tubes never exceeded 12, 11, and 9% after 6 h for the control, P1 and P2, respectively (Supplementary Figure 1B). Treatments with P1 and P2 had positive effects on the number of normal pollen tubes, at 2, 4, and 6 h of culture (Figure 2B). Particularly, after 2 h of culture, P1 and P2 were significantly boosting the rate of normal pollen tubes (46 and 57%, respectively). In contrast, in the untreated control condition, the rate of normal pollen tubes was only 35% (Figure 2B). At 22°C, no significant effects were observed in treated pollen tubes (Figure 2C) when compared to the control conditions (60 and 48%, respectively, after 4 and 6 h; Figure 2C). Pollen tubes treated with P1 and P2 behaved like the control with no apparent effect on pollen

tube morphology (Figure 2K), and similar levels of viable pollen tubes after 2, 4, and 6 h were observed (Figure 2C).

P1 and P2 Stimulate Pollen Tube Growth at 8 and 13°C

The effect of the treatment with the two products was clearly visible when comparing the mean of pollen tube length and the density plot of the length of pollen tubes after 4 h (Figure 3). Pollen tube length in control conditions increased with the temperature ranging from $100\mu\text{m}$ at 8°C, $120\mu\text{m}$ at 13°C to $280\mu\text{m}$ at 22°C (Figures 3B,D,F). At 8°C, the mean length of pollen tubes reached around $150\mu\text{m}$ when treated with P1 or P2 (Figure 3B). This significant increase in the length of pollen tubes was associated with a shift in the distribution of the pollen tube length population toward longer pollen tubes at 8°C as pointed out with blue and red arrows (Figure 3A). Similar results were obtained at 13°C. The mean length of the pollen tube in the control condition was around $125\mu\text{m}$ and was significantly higher ($\sim 150\mu\text{m}$ when treated with P1 or P2; Figure 3D). This increase in the pollen tube length in the treated conditions was probably due to the differences

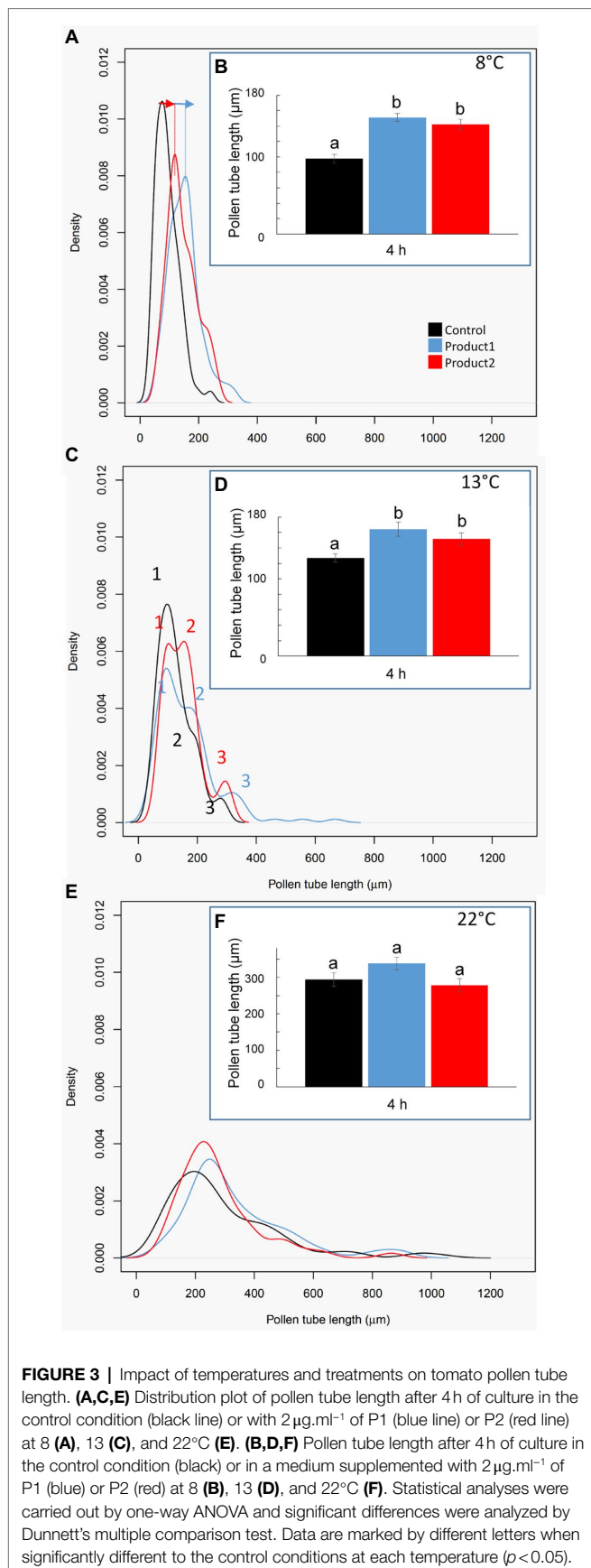


FIGURE 3 | Impact of temperatures and treatments on tomato pollen tube length. **(A,C,E)** Distribution plot of pollen tube length after 4 h of culture in the control condition (black line) or with $2\mu\text{g}\cdot\text{ml}^{-1}$ of P1 (blue line) or P2 (red line) at 8 **(A)**, 13 **(C)**, and 22°C **(E)**. **(B,D,F)** Pollen tube length after 4 h of culture in the control condition (black) or in a medium supplemented with $2\mu\text{g}\cdot\text{ml}^{-1}$ of P1 (blue) or P2 (red) at 8 **(B)**, 13 **(D)**, and 22°C **(F)**. Statistical analyses were carried out by one-way ANOVA and significant differences were analyzed by Dunnett's multiple comparison test. Data are marked by different letters when significantly different to the control conditions at each temperature ($p < 0.05$).

observed in the three main populations of pollen tubes referred as 1, 2, and 3 in **Figure 3C**. In the control condition, three populations of pollen tubes were clearly visible. The main population was at $100\mu\text{m}$, an intermediate one at $\sim 200\mu\text{m}$, and the smallest one around $250\mu\text{m}$ (**Figure 3C**). With P1, the third population of pollen tubes shifts from $250\mu\text{m}$ to $300\mu\text{m}$ and the second one contained a higher density of pollen tubes than in the control (**Figure 3C**). When pollen tubes were treated with P2, there was no visible shift of the population toward longer pollen tubes but an increase in the population at $200\mu\text{m}$ and $250\mu\text{m}$ was observed (**Figure 3C**). At 22°C, the products P1 and P2 did not show any significant effects. The mean of pollen tube length was $\sim 300\mu\text{m}$ in all the tested conditions (**Figure 3F**). A slight shift of the main population around $200\mu\text{m}$ in the control toward $250\mu\text{m}$ was observed in treated pollen with P1 and 2 but without significant statistical effect (**Figures 3E,F**).

Based on this, we decided to investigate molecular markers that may explain the stimulatory effects of the products at these two temperatures compared to the optimal at 22°C. First of all, in order to compare the control and the treated pollen tubes at the same developmental stage, we determined the D values (i.e., the duration required to reach 50% of the highest germination rate of the control condition for a given temperature). The D values are presented in **Table 2**, and the kinetics of the germination are presented in **Supplementary Figure S2**. $D_8^\circ\text{C}$, $D_{13}^\circ\text{C}$, and $D_{22}^\circ\text{C}$ were 4 h 40, 1 h 45, and 0 h 53 in the control condition, respectively (**Table 2**). Treatment with P1 or P2 decreased the D values at the tested temperatures with major effect at 8 and 13°C. $D_8^\circ\text{C}$ and $D_{13}^\circ\text{C}$ of pollen treated with P1 were 3 h 05 and 1 h 20 and 3 h 45 and 1 h with P2, respectively (**Table 2**).

As callose plug deposition (Qin et al., 2012) and callose inner cell wall (Parre and Geitmann, 2005), PMEs (Jiang et al., 2005; Tian et al., 2006) and NADPH oxidase were shown to be important during the fast pollen tube growth (Muhlemann et al., 2018), we further investigated these molecular markers. The callose plug number was determined, and the expression of several *CalS* and *Rboh* genes were studied by qRT-PCR. Total PME activity and PME isoform activities were determined by gel diffusion and by IEF followed by zymogram.

The Number of Callose Plugs Is Slightly Higher Upon Treatment With P2

In fast-growing pollen tubes, callose plugs are regularly synthesized to maintain the vegetative cell in the apical region of the pollen tube. Pollen tubes were stained after a duration of culture corresponding to a 4-fold increase in the D values (4^*D ; **Table 1**), which is the necessary time for pollen tubes to synthesize callose plugs as at D, and no callose plug was detectable in any conditions. Thus, after 3 h, 3 h20, and 3 h30 of culture at 22°C with P1, P2, and control conditions, the number of callose plugs ranged between 0 and 3 (**Figures 4C,F,I,L**). For the control condition, pollen tubes contained between 0–3 or 0–5 callose plugs at $4^*D_8^\circ\text{C}$ and $4^*D_{13}^\circ\text{C}$, respectively (**Figures 4A,B,J,K**). The number of callose

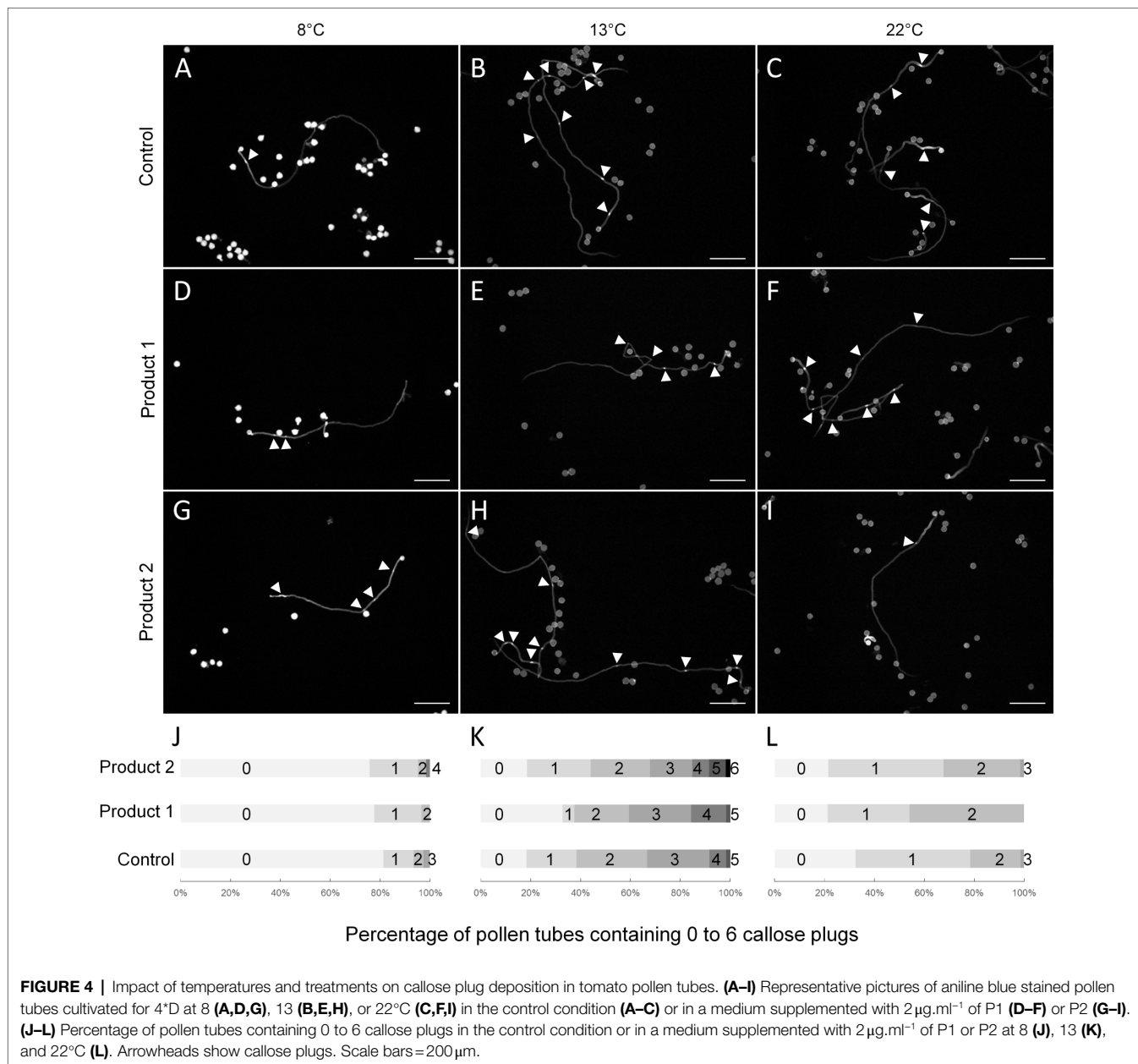
plugs was quite similar in P1 treated samples (Figures 4D,E,J,K) at 4*D₈°C and 4*D₁₃°C. A slight increase in the number of callose plugs was observed at 4*D₈°C and 4*D₁₃°C when pollen tubes were cultured with P2 (Figures 4G,H,J,K). Pollen tubes displaying four callose plugs at 4*D₈°C and up to six callose plugs at 4*D₁₃°C were only observed when treated with P2. In order to link the positive effect of P1 and P2 on pollen tube length under cold temperatures, the expression of putative tomato *CalS* genes was analyzed by qRT-PCR.

Gene Expression of *CalS* and *CalS*-Like Genes Upon Treatment

AtCalS5 was shown to be strongly expressed in pollen grains and pollen tubes and involved in callose deposition in the

inner cell wall and plugs (Dong et al., 2005b; Abercrombie et al., 2011; Zaveska Drabkova and Honys, 2017). The tomato *CalS* candidate genes were selected using the protein sequence from the *Arabidopsis thaliana CalS5* gene (At2g13680) in a TBLASTN analysis (Altschul et al., 1997). The search was carried out in the NCBI transcript references sequences (refseq_rna) restricted to *Solanum lycopersicum* to retrieve transcripts corresponding to potential *CalS* cDNA sequences from tomato.

Finally, after validation of primer pairs, four *CalS* gene sequences were used for the qRT-PCR analyses: *Solyc01g006370.3*, *Solyc01g73750.3*, *Solyc01g006370.3*, *Solyc11g005980.2*, and *Solyc11g005985.1*. The effect of cold was not accompanied by strong variations in the expression of the *CalS* genes in the control condition (Figure 5). Treatments with P1 or P2 did



not contribute to a measurable modification of the expression of the *CalS* genes except for the treatment with P2 on *Solyc11g005985.1* at 8, 13, and 22°C and *Solyc11g005980.2* at 13°C (Figure 5). These results can be explained by the heterogeneity of the gene expression among the six biological replicates (Supplementary Figure S3) except for *Solyc11g005980.2* and *Solyc11g005985.1*, for which the expression was very homogeneous (Supplementary Figure S3).

Cold Temperatures Modify PME Isoform Activity

As PMEs are key enzymes implicated in the remodeling of pectin during pollen tube growth, the total PME activity was assessed by gel diffusion and the profile of the different active isoforms of PMEs were detected with zymogram after IsoElectric Focalization (IEF). Interestingly, in the control condition, pollen cultured under cold temperature, total PME activities did not significantly change and were 4, 6, and 5.2 nkatal in 20 µg of proteins at 8, 13, and 22°C, respectively (Figures 6A,B). The treatments with P1 or P2 did not significantly modify the total PME activities compared to the control. They were 4, 6.5, and 6 nkatal in 20 µg of proteins with P1, whereas they were 5, 5.5, and 4.5 nkatal with P2 at 8, 13, and 22°C, respectively (Figures 6A,B). PME isoforms were separated by IEF based on their isoelectric points and their activities were visualized on a pectic gel. In optimal condition (22°C), the PME activities were mostly resulting from five isoforms (Figure 6C). Two acidic isoforms, at pH 5.3 and between 6.0

and 6.9, a neutral (pH 7.4), and two alkaline isoforms (between pH 7.4 and 7.8, and 8.3) were detected. There was no clear differences between the treatments at 22°C and the results obtained at 13°C with or without the addition of P1 or P2 (Figure 6C). Interestingly, at 8°C, the most alkaline PME isoform (pH 8.3) was not detected in the control and the treated conditions (Figure 6C). The lack of this PME isoform or its inhibition under cold temperatures seemed to be compensated by higher activities of the other isoforms, particularly the isoforms at pH 5.3, 7.4 and the one between 7.4 and 7.8 (Figure 6C).

Cold Temperatures Modify NADPH Oxidase Expression in Treated Samples

Pollen tube growth is also coordinated by intracellular signals. For example, $O_2^{\cdot-}$ and H_2O_2 were shown to be key elements for pollen tube growth (Potocký et al., 2007; Boisson-Dernier et al., 2013). Using *Arabidopsis thaliana* pollen-expressed *Rboh* (*RbohH* At5g60010 and *RbohJ* At3g45810; Boisson-Dernier et al., 2013), we retrieved two *Rboh* in the tomato genome *Solyc06g075570.1* (*Rboh1*) and *Solyc11g072800.1* (*Rboh2*) using TBLASTN analysis. Their relative expressions in cold conditions and the impact of P1 or P2 were followed. Results are shown in Figure 7 and Supplementary Figure S4. Cold temperatures did not significantly modify the expression of *Rboh1* and *Rboh2* in the control condition (Figure 7; Supplementary Figure S3). Treatment of pollen tubes with P1 did not have any effect on *Rboh* gene expression when compared to the control (Figure 7;

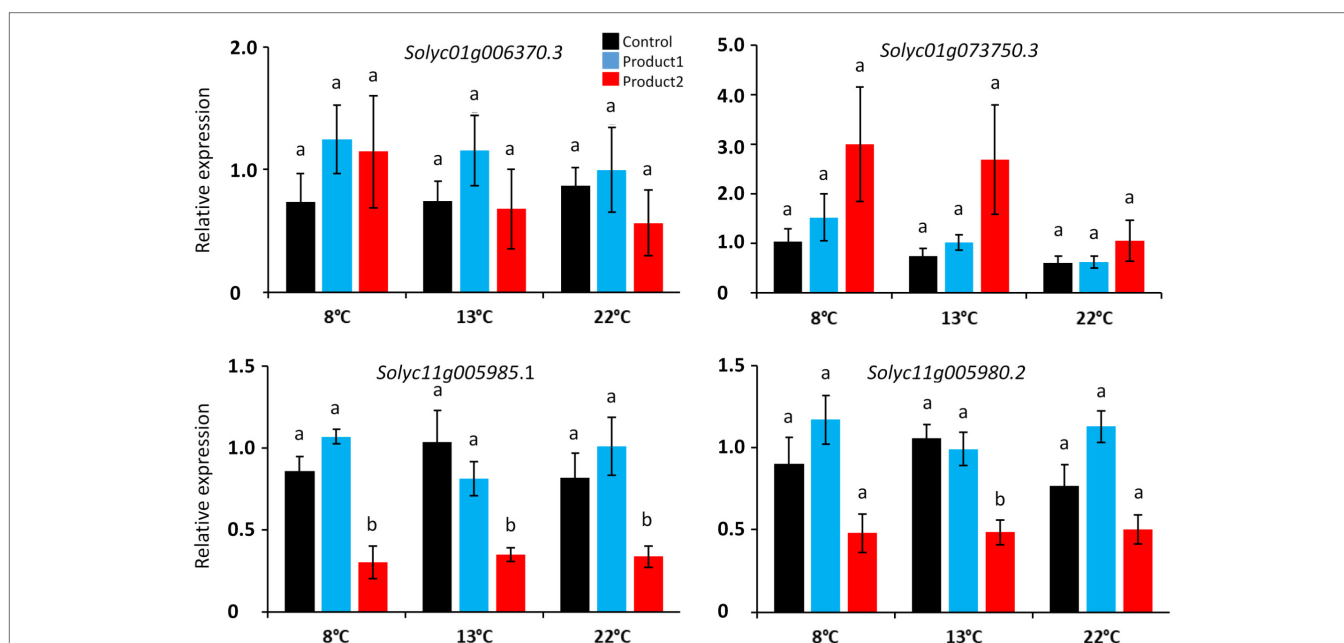
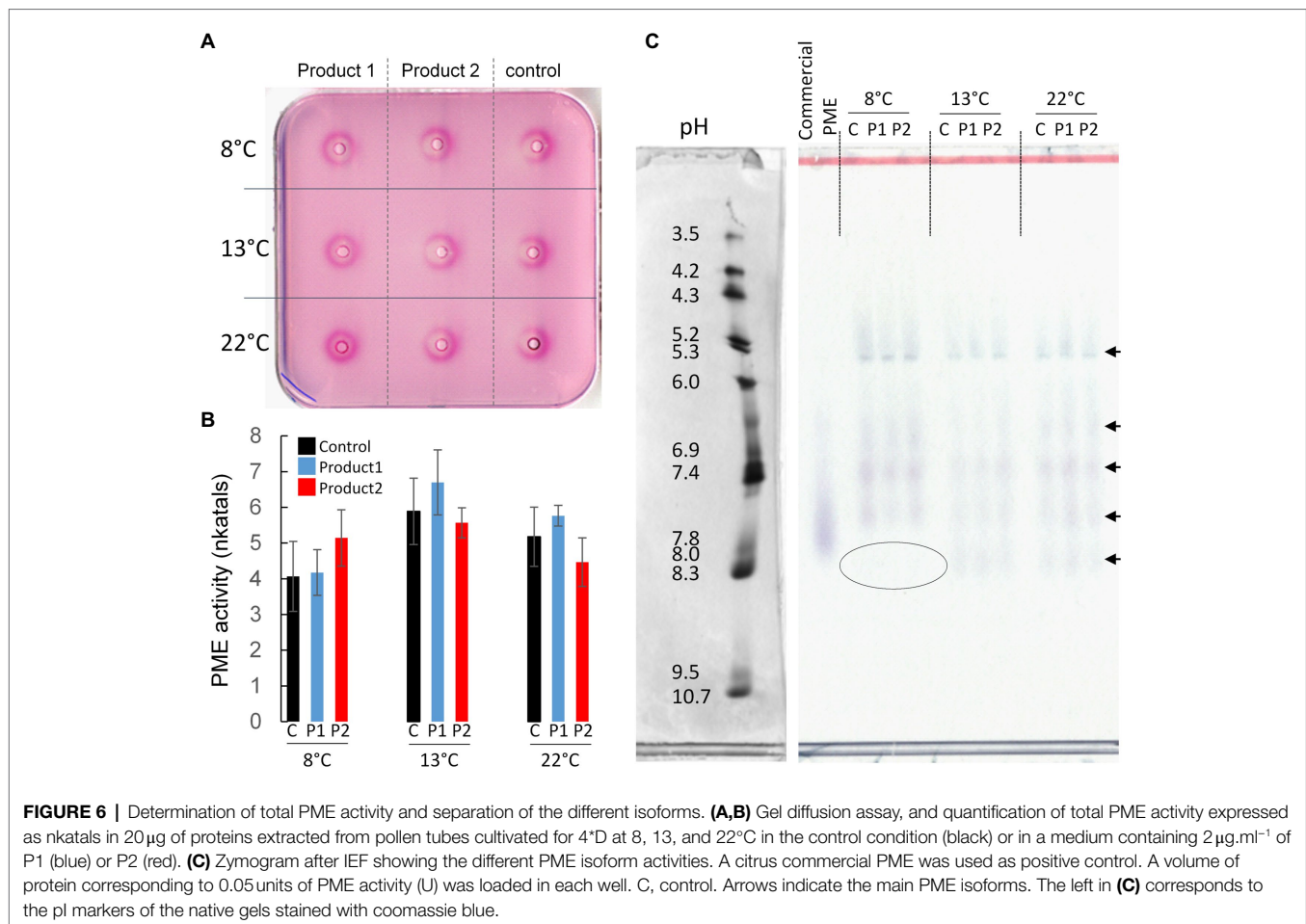


FIGURE 5 | Relative expression of *CalS* and *CalS*-like genes in pollen tubes cultured for the duration corresponding to $D_8^\circ C$, $D_{13}^\circ C$, and $D_{22}^\circ C$. Different colors correspond to pollen tubes cultivated in control conditions (black), or in a medium supplemented with $2\ \mu g \cdot ml^{-1}$ of P1 (blue) or P2 (red) at 8, 13, and 22°C. Relative expression corresponds to the mean of 6 biological replicates normalized against four reference genes (*EXP*, *LZ*, *EF1 α* , and *CK2A*). Statistical analyses were carried out by one-way ANOVA and significant differences were analyzed by Dunnett's multiple comparison test. Data are marked by different letters when significantly different to the control conditions at each temperature ($p < 0.05$).



Supplementary Figure S3). In contrast, treatment of pollen with P2 strongly and significantly reduced the expression of *Rboh1* at all the tested temperatures (**Figure 7A; Supplementary Figure S3**) and *Rboh2* (**Figures 7B; Supplementary Figure S3**).

DISCUSSION

The deleterious effects of cold stresses were previously studied on a Peruvian ecotype of tomato (Zamir et al., 1981) and authors showed that pollen grain germination was inhibited below 5°C (Zamir et al., 1981). In our study, using *Solanum lycopersicum* var. *cerasiforme* cv. WVa106 as an experimental model, we confirmed that tomato pollen grains were very sensitive to cold temperature and no germination was observed after 16 h of culture at 4°C. Moreover, we showed that moderate cold stresses have a strong effect during the germination of pollen grains. As a matter of fact, the germination rate decreased and only one-third of the pollen grains were germinated after 6 h at 8°C. Moreover, pollen tubes were also shorter when compared to the control condition, at 22°C. These results are in agreement with previous studies showing the effect of cold temperatures on pollen germination and pollen tube growth.

For example, cold temperatures were shown to impact pollen germination and pollen tube length in *Trifolium repens* cultivated at 10 or 14°C instead of 22°C (Jakobsen and Martens, 1994) and chickpea cultivated in cold night regime (5°C at night, 15°C during the day; Srinivasan et al., 1999). The reduction in the pollen tube length prevents the pollen tubes to reach the ovules and leads to a reduction in seed production (Jakobsen and Martens, 1994; Zinn et al., 2010).

Numerous molecules secreted by the female tissues are known to act on pollen germination, pollen tube growth, and guidance during sexual reproduction. Pollen tubes can be guided by unusual amino acids like D-serine (Michard et al., 2011) or polypeptides such as chemocyanin (Kim et al., 2003), plantacyanin (Dong et al., 2005a), defensin-like (LURE; Okuda et al., 2009), *Zea mays* EGG APPARATUS 1 (ZmEA1; Márton et al., 2005), and others reviewed by Kanaoka and Higashiyama (2015) and Johnson et al. (2019). Glycomolecules were also implicated in promoting pollen tube growth and guidance such as arabinogalactan proteins (Wu et al., 1995; Mollet et al., 2002; Coimbra and Duarte, 2003; Nguema-Ona et al., 2012; Pereira et al., 2016; Leszczuk et al., 2019) and arabinogalactan glycomodules (Hou et al., 2016; Mizukami et al., 2016; Jiao et al., 2017). In contrast, they could be repelled *in vitro* by nitric oxide (Prado et al., 2004). Flavonols were also shown

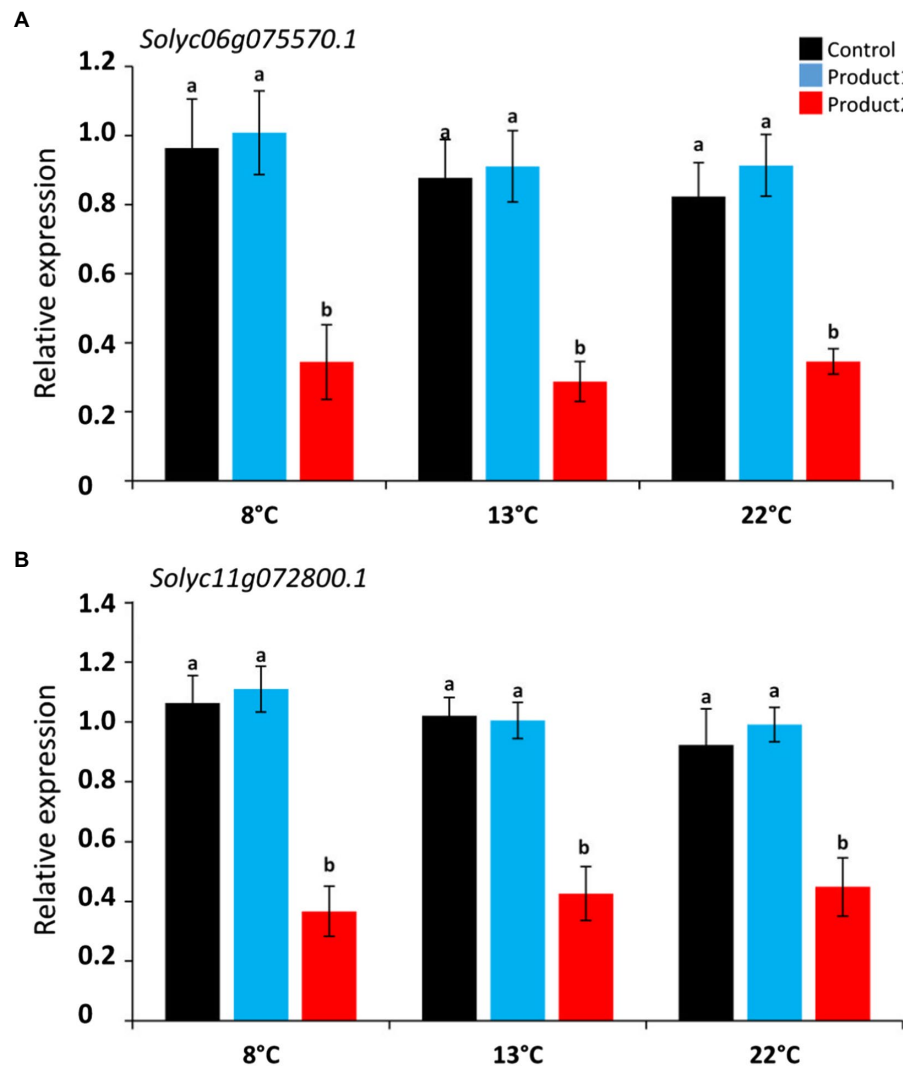


FIGURE 7 | Relative expression of NADPH oxidase genes: *Rboh1* and *Rboh2* cultivated for the durations corresponding to D₈°C, D₁₃°C, and D₂₂°C. **(A)** Relative expression of *Rboh1* (*Solyc06g075570.1*). **(B)** Relative expression of *Rboh2* (*Solyc11g072800.1*). Different colors correspond to pollen tubes cultivated in control condition (black), or in a medium supplemented with 2 μg·ml⁻¹ of P1 (blue) or P2 (red) at 8, 13, and 22°C. Relative expression corresponds to the mean of six biological replicates normalized against four reference genes (*EXP*, *LZ*, *EF1α*, and *CK2A*). Statistical analyses were carried out by one-way ANOVA, and significant differences were analyzed by Dunnett's multiple comparison test. Data are marked by different letters when significantly different to the control conditions at each temperature ($p < 0.05$).

to improve pollen germination (Mo et al., 1992; Ylstra et al., 1992). All these molecules are naturally synthesized by the pistil, and only a few studies have shown the effect of exogenous application of natural extracts on pollen germination with the exception of pyrroloquinoline quinone on *Lilium* pollen germination (Xiong et al., 1988) and the exogenous supply of polyamines such as spermidine on many species (Sorkheh et al., 2011; Rodriguez-Enriquez et al., 2013).

In this study, we used two carbohydrate-based natural extracts to stimulate pollen germination and pollen tube growth *in vitro* under cold temperature. A first one was mainly composed of galactose and glucose (P1), and the second was mainly made of mannitol together with glucose and fucose (P2). The two carbohydrate-based natural products

significantly increased pollen germination rates by promoting the number of normal and viable pollen tubes. They also promoted pollen tube growth. The length of pollen tubes is generally correlated with the number of callose plugs and in *A. thaliana*, pollen tubes without a callose plug are shorter than those with a callose plug (Qin et al., 2012). Moreover, in *Hibiscus moscheutos*, the number of callose plugs was used as an indicator of pollen tube growth rate (Snow and Spira, 1991a,b), and the absence of callose plug was correlated with the inability of pollen tubes to reach the ovule in *Petunia* (Guyon et al., 2004). Finally, it has been proposed that angiosperm pollen tubes that synthesize callose plugs have an evolutionary advantage over gymnosperms, which do not, leading to faster-growing pollen tubes, thus reducing

considerably the timing intervals between pollination and fertilization (Williams, 2008; Abercrombie et al., 2011; Dehors et al., 2019). Based on that it was legitimate to search for a correlation of the positive effect of P1 or P2 on callose deposition. In our study, there was no significant statistical differences regarding the number of callose plugs between the control and the biostimulated pollen tubes, whereas a small population of pollen tubes had more callose plugs in the treated condition compared to the control. As suggested by Qin et al. (2012), we searched for differences in the expression of *CALS* genes that regulate callose wall synthesis and plug deposition in order to link their expression to pollen tube length or growth rate. Surprisingly, the expression of two putative *CALS* genes (*Solyc11g005985.1* and *Solyc11g005980.2*) were reduced in pollen tubes treated with P2, whereas this treatment was clearly beneficial for the length of pollen tubes at 8 and 13°C. Treatment with P1 did not induce any differences in the expression of *CALS* although P1 also had a positive effect on the pollen tube length. It is then difficult to link the synthesis of callose with the pollen tube length in *Solanum lycopersicum* under cold temperature. However, the *cals5* pollen mutant of *A. thaliana* had no callose plug but displayed normal growth both *in vitro* and *in vivo* (Nishikawa et al., 2005) suggesting that callose is not the only polymer influencing the normal pollen tube growth.

In fact, pectins, more specifically HG, and their modifications are thought to control the mechanical properties of the cell wall during pollen tube growth (Chebli et al., 2012; Mollet et al., 2013; Leroux et al., 2015; Dehors et al., 2019). It is generally established that HG are deposited in the cell wall under a highly methylesterified form (Zhang and Staehelin, 1992; Li et al., 1997; Sterling et al., 2006) and are then de-esterified through the activity of PME within the cell wall (Wolf et al., 2009) in the sub-apical zone. This tight regulation is thought to control the stiffness of the cell wall between the tip (elasticity) and the shank (rigidity) to maintain the cylindrical shape of fast-growing pollen tubes (Taylor and Hepler, 1997; Wolf and Greiner, 2012; Dehors et al., 2019). PME activity is crucial during pollen germination (Leroux et al., 2015) and also during pollen tube growth (Jiang et al., 2005; Tian et al., 2006). The functional disruption of *PME48* (At5g07410) resulted in a strong delay of *in vitro* and *in vivo* germination, whereas functional disruption of *VGD1* (*PME5*, At2g47040) resulted in burst pollen tubes *in vitro* and a strong reduction in male fertility and seed set. Another PME, (*PPME1*, At1g69940) was shown to be involved in the determination of the shape of the pollen tube and the growth rate (Tian et al., 2006). We, therefore, tried to link the treatment and the length of the treated pollen tubes with PME activity but no clear correlation was made. However, our data show that the cold condition at 8°C modified the PME profiles with the absence of a basic isoform activity. This unexpected effect could be the result of differential expression of *PME* genes in response to cold. In *A. thaliana* pollen grains, cold treatments modified gene expressions and a 10-fold increase of two *PME* genes (*PME48* and *PME49*) was observed in cold treated (72h at 0°C) pollen

grains (Lee and Lee, 2003). We cannot exclude that in tomato, PMEs are differentially expressed under cold temperatures. Cold treatment might also have modified the interaction of PMEs with their inhibitors (PMEI; Hocq et al., 2017). The consequences of PMEI-PME interactions are diverse. Exogenous application of PMEI either drastically alters (Woriedh et al., 2013; Paynel et al., 2014; Hocq et al., 2017) or promote pollen tube growth depending on the pH range needed for inhibition (Hocq et al., 2017). The overexpression of *AtPMEI-1* or *AtPMEI-2* induced a 20% increase of root length (Lionetti et al., 2007). Even if the role of PMEI during cold stresses have not been extensively studied, it was shown in pepper (*Capsicum annuum*) that overexpression of *CaPMEI1* in *A. thaliana* could enhance resistance to oxidative and drought stresses (An et al., 2008). Moreover, *A. thaliana* plants overexpressing *AtPMEI13* or the blue mustard (*Chorispora bungeana*) expressing *CbPMEI1* showed decreased freezing tolerance, increased salt tolerance, and displayed longer roots than wild-type plants (Chen et al., 2018) revealing pleiotropic effects of PMEI. A recent study on tomato pollen subjected to heat stress has revealed that pollen mostly responds to heat by modulating the proteome rather than the transcriptome (Keller et al., 2018). We can then hypothesize that PMEI and their interactions with PMEs can be modified during cold treatments.

Pollen tube growth rate is obviously dependent on the cell wall synthesis, deposition and remodeling but many other signals are also involved during growth. Tip-localized ROS are essential for pollen tube growth (Potocký et al., 2007; Speranza et al., 2012; Boisson-Dernier et al., 2013). NADPH oxidases produce $O_2^{\cdot-}$, which are converted to H_2O_2 by superoxide dismutases. The inhibition of NADPH oxidases using diphenylene iodonium chloride (DPI) on tobacco pollen tubes resulted in growth arrest, which was rescued by addition of exogenous H_2O_2 (Potocký et al., 2007). In *Arabidopsis*, two NADPH oxidases (*RBOHh* and *RBOHj*) are expressed in the pollen tube. Almost all pollen tubes of the double mutant *rboh/h/rboh/j* burst rapidly *in vitro* (Boisson-Dernier et al., 2013; Kaya et al., 2014). Exogenous supply of Ca^{2+} increased tip-localized ROS and *in vitro* NADPH oxidase activity is stimulated by Ca^{2+} (Potocký et al., 2012) suggesting that NADPH oxidase activity is modulated *in vivo* by Ca^{2+} . Low temperature stress was also shown to enhance the transcripts, proteins, and activities of different ROS-scavenging enzymes (Prasad et al., 1994; Saruyama and Tanida, 1995; O'Kane et al., 1996) and the production of ROS by NADPH oxidases (Suzuki and Mittler, 2006). In our study, cold did not affect *Rboh* expression in tomato pollen tubes in the control condition or with P1. However, P2 strongly decreased the expression of the two *Rboh* genes. This reduction in *NADPH oxidase* gene expression was correlated with a higher number of viable pollen tubes compared to the control. Taken together, our results showed that cold temperature affected tomato pollen tube growth. The two products tested were capable to reduce the effect of cold. The beneficial effects of the products are not clearly linked with the modulation of the classical molecular markers implicated in pollen tube growth. However, P2 had a strong effect on *Rboh* expression and thus probably on ROS production and this effect could explain the higher number of viable pollen

tubes. Recently, a study has shown that the brassinazole signaling regulator *BRASSINAZOLE RESISTANT 1 (BZR1)* could directly bind to the promoter of *Rboh* in tomato (Yan et al., 2020). Thus, it could be interesting to further investigate the link between the treatment and brassinosteroids.

Finally, it has been described that cold stress could induce a reduction in bioactive gibberellins in cold-susceptible anthers (Sakata et al., 2014). In fact, the regulation of gibberellin homeostasis perception by *SIGRAS40* was shown to be involved in plant reproduction during abiotic stresses (Liu et al., 2017). Moreover, Huang et al. (2017) showed that the *miR171-GRAS* module (involved in gibberellin perception and signaling) and its modulation impaired fertilization in tomato. Additionally, in tomato, overexpression of *KNOX*, which is involved in gibberellin perception, led to a strong increase in pollen tube length together with the increase in cell wall modifying genes such as pectate lyase (Yan et al., 2019). Moreover, cold stress can also induce an accumulation of soluble sugars including oligosaccharides (fructans, raffinose oligosaccharide family) in cold-tolerant anthers (Sharma and Nayyar, 2016) leading to viable pollen. Sugars can play multiple functions in protecting plants such as ROS scavenging, membrane stabilization, and signaling leading to the induction of cold tolerance (Sharma and Nayyar, 2016). Thus, other possible explanations for the positive effect of those two carbohydrate-based products during cold treatment are that they (i) may have a direct effect on scavenging OH^\cdot resulting in the formation of new oxidized oligosaccharides/sugars (Tarkowski and Van den Ende, 2015; Tenhaken, 2015), which may be internalized and used as a primary energy source, (ii) may directly stabilize the membrane fluidity (Tarkowski and Van den Ende, 2015) at the pollen tube tip allowing a faster growth, (iii) may serve, depending on the chemical structure, as signaling molecules for pollen germination (Hirsche et al., 2017) and/or pollen tube growth, or (iv) may help to regulate ROS homeostasis by scavenging ROS, therefore, allowing a greater expression and activity of NADPH oxidase promoting a fast growth without the deleterious effect of ROS, like flavonol does in tomato pollen tubes (Muhlemann et al., 2018).

Interestingly, the products did not affect the general functioning of the reproductive cell (callose plug, pectin remodeling enzymes) but seems to positively modify the ROS perception and management. Even if the molecular targets of these compounds are not known yet and that further works are needed to precise their mode of action, the current study confirms that the use of natural carbohydrate-based compounds can effectively promote germination and growth of tomato pollen tube under cold conditions. This is of the utmost importance as it is known that short cold periods during flowering can alter dramatically the fertilization process and subsequently the production of seeds and fruits (Zinn et al., 2010; Gammans et al., 2017). Even if climate changes are now accepted, the effects on crop production are much more complex to predict than a global increase in the temperature everywhere on Earth (Lobell and Gourdji, 2012). Major crops could be geographically displaced as predicted for the date palm trees (Shabani et al., 2012). In fact, climate changes in the agricultural regions will result in more extreme temperature fluctuations (Solomon et al., 2007)

and could threaten pollinators (Giannini et al., 2017). In many actual cases, certain crops are now cultivated in other regions to avoid the effect of increasing temperatures (Zinn et al., 2010). This is the case for soybean (Dong et al., 2004) and rice (Oliver et al., 2005) and others. This results in farming at higher altitude with possible colder temperatures during plant reproduction (Dong et al., 2004; Oliver et al., 2005). Therefore, the possibility to develop new biostimulants that can improve pollen germination and pollen tube growth in deleterious conditions could represent a substantial progress for modern agriculture in order to face climate changes.

In conclusion, this study reveals that the two carbohydrate-based compounds assisted *in vitro* pollen germination and tube growth under cold temperatures and may possibly have a beneficial effect on *in vivo* germination. However, further field trials under real conditions are necessary to confirm the data obtained *in vitro*.

DATA AVAILABILITY STATEMENT

All datasets presented in this study are included in the article/**Supplementary Material**.

AUTHOR CONTRIBUTIONS

FC, J-CY, EN-O, J-CM, FJ, and AL designed the research. AL, J-CM, FJ, and EN-O analyzed the data and wrote the paper. FC, J-CY, EN-O, and FJ provided the products. FL, GP, and ST performed pollen culture, callose staining, and image analyses, and collected the samples for molecular and biochemical analyses. M-CK-M and NA designed the gene expression experiments. FL, GP, ST, and NA performed and analyzed the gene expression experiments. BG designed, performed, and analyzed the gas chromatography experiment and data. AM designed and analyzed the biochemical experiment with the help of FL, GP, and ST. All authors contributed to the article and approved the submitted version.

FUNDING

This work was funded by CMI Roullier and by Université de Rouen Normandie (UNIROUEN, Normandie Université).

ACKNOWLEDGMENTS

The authors are grateful to Romain Ménival for his contribution to this work.

SUPPLEMENTARY MATERIAL

The Supplementary Material for this article can be found online at: <https://www.frontiersin.org/articles/10.3389/fpls.2021.552515/full#supplementary-material>

REFERENCES

- Abercrombie, J. M., O'Meara, B. C., Moffatt, A. R., and Williams, J. H. (2011). Developmental evolution of flowering plant pollen tube cell walls: callose synthase (CalS) gene expression patterns. *EvoDevo* 2:14. doi: 10.1186/2041-9139-2-14
- Abramoff, M. D., Magelhaes, P. J., and Ram, S. J. (2004). Image processing with ImageJ. *Biophoton. Int.* 11, 36–42.
- Airiana, O. B., Vreeburg, R. A. M., and Fry, S. C. (2016). Pectic polysaccharides are attacked by hydroxyl radicals in ripening fruit: evidence from a fluorescent fingerprinting method. *Ann. Bot.* 117, 441–455. doi: 10.1093/aob/mcv192
- Altschul, S. F., Madden, T. L., Schäffer, A. A., Zhang, J., Zhang, Z., Miller, W., et al. (1997). Gapped BLAST and PSI-BLAST: a new generation of protein database search programs. *Nucleic Acids Res.* 25, 3389–3402. doi: 10.1093/nar/25.17.3389
- An, S. H., Sohn, K. H., Choi, H. W., Hwang, I. S., Lee, S. C., and Hwang, B. K. (2008). Pepper pectin methylesterase inhibitor protein CaPMEI1 is required for antifungal activity, basal disease resistance and abiotic stress tolerance. *Planta* 228, 61–78. doi: 10.1007/s00425-008-0719-z
- Barlow, K. M., Christy, B. P., O'Leary, G. J., Riffkin, P. A., and Nuttall, J. G. (2015). Simulating the impact of extreme heat and frost events on wheat crop production: a review. *Field Crop Res.* 171, 109–119. doi: 10.1016/j.fcr.2014.11.010
- Beck, E. H., Fettig, S., Knake, C., Hartig, K., and Bhattarai, T. (2007). Specific and unspecific responses of plants to cold and drought stress. *J. Biosci.* 32, 501–510. doi: 10.1007/s12038-007-0049-5
- Boavida, L. C., and McCormick, S. (2007). Temperature as a determinant factor for increased and reproducible *in vitro* pollen germination in *Arabidopsis thaliana*. *Plant J.* 52, 570–582. doi: 10.1111/j.1365-313X.2007.03248.x
- Boisson-Dernier, A., Lituiev, D. S., Nestorova, A., Franck, C. M., Thirugnanarajah, S., and Grossniklaus, U. (2013). ANXUR receptor-like kinases coordinate cell wall integrity with growth at the pollen tube tip via NADPH oxidases. *PLoS Biol.* 11:e1001719. doi: 10.1371/journal.pbio.1001719
- Bradford, M. M. (1976). A rapid and sensitive method for the quantitation of microgram quantities of protein utilizing the principle of protein-dye binding. *Anal. Biochem.* 72, 248–254. doi: 10.1016/0003-2697(76)90527-3
- Brewbaker, J. L., and Kwak, B. H. (1963). The essential role of calcium ion in pollen germination and pollen tube growth. *Am. J. Bot.* 50, 859–865. doi: 10.1002/j.1537-2197.1963.tb06564.x
- Chakrabarti, B., Singh, S. D., Nagarajan, S., and Aggarwal, P. K. (2011). Impact of temperature on phenology and pollen sterility of wheat varieties. *Aust. J. Crop. Sci.* 5, 1039–1043.
- Chebli, Y., Kaneda, M., Zerzour, R., and Geitmann, A. (2012). The cell wall of the *Arabidopsis* pollen tube: spatial distribution, recycling, and network formation of polysaccharides. *Plant Physiol.* 160, 1940–1955. doi: 10.1104/pp.112.199729
- Chen, J., Chen, X., Zhang, Q., Zhang, Y., Ou, X., An, L., et al. (2018). A cold-induced pectin methyl-esterase inhibitor gene contributes negatively to freezing tolerance but positively to salt tolerance in *Arabidopsis*. *J. Plant Physiol.* 222, 67–78. doi: 10.1016/j.jplph.2018.01.003
- Chen, X. Y., and Kim, J. Y. (2009). Callose synthesis in higher plants. *Plant Signal. Behav.* 4, 489–492. doi: 10.4161/psb.4.6.8359
- Clarke, H. J., and Siddique, K. H. (2004). Response of chickpea genotypes to low temperature stress during reproductive development. *Field Crop Res.* 90, 323–334. doi: 10.1016/j.fcr.2004.04.001
- Coimbra, S., and Duarte, C. (2003). Arabinogalactan proteins may facilitate the movement of pollen tubes from the stigma to the ovules in *Actinidia deliciosa* and *Amaranthus hypochondriacus*. *Euphytica* 133, 171–178. doi: 10.1023/A:1025564920478
- Dardelle, F., Lehner, A., Ramdani, Y., Bardor, M., Lerouge, P., Driouch, A., et al. (2010). Biochemical and immunocytological characterizations of *Arabidopsis thaliana* pollen tube cell wall. *Plant Physiol.* 153, 1563–1576. doi: 10.1104/pp.110.158881
- Dehors, J., Mareck, A., Kieffer-Meyer, M. C., Menu-Bouaouiche, L., Lehner, A., and Mollet, J. C. (2019). Evolution of cell wall polymers in tip-growing land plant gametophytes: composition, distribution, functional aspects and their remodelling. *Front. Plant Sci.* 10:441. doi: 10.3389/fpls.2019.00441
- Dong, J., Kim, S. T., and Lord, E. M. (2005a). Plantacyanin plays a role in reproduction in *Arabidopsis*. *Plant Physiol.* 138, 778–789. doi: 10.1104/pp.105.063388
- Dong, X., Hong, Z., Sivaramakrishnan, M., Mahfouz, M., and Verma, D. P. S. (2005b). Callose synthase (CalS) is required for exine formation during microgametogenesis and for pollen viability in *Arabidopsis*. *Plant J.* 42, 315–328. doi: 10.1111/j.1365-313X.2005.02379.x
- Dong, Y. S., Zhao, L. M., Liu, B., Wang, Z. W., Jin, Z. Q., and Sun, H. (2004). The genetic diversity of cultivated soybean grown in China. *Theor. Appl. Genet.* 108, 931–936. doi: 10.1007/s00122-003-1503-x
- Downie, B., Dirk, L. M., Hadfield, K. A., Wilkins, T. A., Bennett, A. B., and Bradford, K. J. (1998). A gel diffusion assay for quantification of pectin methylesterase activity. *Anal. Biochem.* 264, 149–157. doi: 10.1006/abio.1998.2847
- Dreyer, A., and Dietz, K.-J. (2018). Reactive oxygen species and the redox-regulatory network in cold stress acclimation. *Antioxydants* 7:169. doi: 10.3390/antiox7110169
- Duan, Q., Kita, D., Johnson, E. A., Aggarwal, M., Gates, L., Wu, H. M., et al. (2014). Reactive oxygen species mediate pollen tube rupture to release sperm for fertilization in *Arabidopsis*. *Nat. Commun.* 5:3129. doi: 10.1038/ncomms4129
- Fernandez-Pozo, N., Menda, N., Edwards, J. D., Saha, S., Tecle, I. Y., Strickler, S. R., et al. (2015). The sol genomics network (SGN)—from genotype to phenotype to breeding. *Nucleic Acids Res.* 43, D1036–D1041. doi: 10.1093/nar/gku1195
- Foreman, J., Demidchik, V., Bothwell, J. H., Mylona, P., Miedema, H., Torres, M. A., et al. (2003). Reactive oxygen species produced by NADPH oxidase regulate plant cell growth. *Nature* 422, 442–446. doi: 10.1038/nature01485
- Gammans, M., Mérel, P., and Ortiz-Bobea, A. (2017). Negative impacts of climate change on cereal yields: statistical evidence from France. *Environ. Res. Lett.* 12:054007. doi: 10.1088/1748-9326/aa6b0c
- Ge, Z., Cheung, A. Y., and Qu, L. J. (2019). Pollen tube integrity regulation in flowering plants: insights from molecular assemblies on the pollen tube surface. *New Phytol.* 222, 687–693. doi: 10.1111/nph.15645
- Giannini, T. C., Costa, W. F., Cordeiro, G. D., Imperatriz-Fonseca, V. L., Saraiva, A. M., Biesmeijer, J., et al. (2017). Projected climate change threatens pollinators and crop production in Brazil. *PLoS One* 12:e0182274. doi: 10.1371/journal.pone.0182274
- Giorno, F., Wolters-Arts, M., Mariani, C., and Rieu, I. (2013). Ensuring reproduction at high temperatures: the heat stress response during anther and pollen development. *Plan. Theory* 2, 489–506. doi: 10.3390/plants2030489
- Guyon, V., Tang, W. H., Monti, M. M., Raiola, A., Lorenzo, G. D., McCormick, S., et al. (2004). Antisense phenotypes reveal a role for SHY, a pollen-specific leucine-rich repeat protein, in pollen tube growth. *Plant J.* 39, 643–654. doi: 10.1111/j.1365-313X.2004.02162.x
- Hadfield, J. L., and Prueger, J. H. (2015). Temperature extremes: effect on plant growth and development. *Weather Clim. Extrem.* 10, 4–10. doi: 10.1016/j.wace.2015.08.001
- Hirsche, J., García Fernández, J. M., Stabentheiner, E., Grofskinsky, D. K., and Roitsch, T. (2017). Differential effects of carbohydrates on *Arabidopsis* pollen germination. *Plant Cell Physiol.* 58, 691–701. doi: 10.1093/pcp/pcx020
- Hocq, L., Sénéchal, F., Lefebvre, V., Lehner, A., Domon, J. M., Mollet, J. C., et al. (2017). Combined experimental and computational approaches reveal distinct pH dependence of pectin methylesterase inhibitors. *Plant Physiol.* 173, 1075–1093. doi: 10.1104/pp.16.01790
- Hoegh-Guldberg, O., Jacob, D., Taylor, M., Bindi, M., Brown, S., Camilloni, I., et al. (2018). “Impacts of 1.5°C global warming on natural and human systems,” in *Global Warming of 1.5°C. An IPCC Special Report on the Impacts of Global Warming of 1.5°C above Pre-industrial Levels and Related Global Greenhouse Gas Emission Pathways, in the Context of Strengthening the Global Response to the Threat of Climate Change, Sustainable Development, and Efforts to Eradicate Poverty*. eds. V. Masson-Delmotte, P. Zhai, H. O. Pörtner, D. Roberts, J. Skea, P. R. Shukla et al. (Geneva, Switzerland: IPCC Secretariat), 175–311.
- Hou, Y., Guo, X., Cyprys, P., Zhang, Y., Bleckmann, A., Cai, L., et al. (2016). Maternal ENODLs are required for pollen tube reception in *Arabidopsis*. *Curr. Biol.* 26, 2343–2350. doi: 10.1016/j.cub.2016.06.053
- Huang, W., Peng, S., Xian, Z., Lin, D., Hu, G., Yang, L., et al. (2017). Overexpression of a tomato miR171 target gene Sl GRAS 24 impacts multiple agronomic traits via regulating gibberellin and auxin homeostasis. *Plant Biotechnol. J.* 15, 472–488. doi: 10.1111/pbi.12646
- Hussain, H. A., Hussain, S., Khaliq, A., Ashraf, U., Anjum, S. A., Men, S., et al. (2018). Chilling and drought stresses in crop plants: implications,

- cross talk, and potential management opportunities. *Front. Plant Sci.* 9:393. doi: 10.3389/fpls.2018.00393
- Imin, N., Kerim, T., Rolfe, B. G., and Weinman, J. J. (2004). Effect of early cold stress on the maturation of rice anthers. *Proteomics* 4, 1873–1882. doi: 10.1002/pmic.200300738
- IPCC (2014). “Climate change 2014: synthesis report,” in *Contribution of Working Groups I, II and III to the Fifth Assessment Report of the Intergovernmental Panel on Climate Change*. eds. Core Writing Team, R. K. Pachauri and L. A. Meyer (Geneva, Switzerland: IPCC), 151.
- Jakobsen, H. B., and Martens, H. (1994). Influence of temperature and ageing of ovules and pollen on reproductive success in *Trifolium repens* L. *Ann. Bot.* 74, 493–501. doi: 10.1006/anbo.1994.1146
- Jiang, L., Yang, S. L., Xie, L. F., Puah, C. S., Zhang, X. Q., Yang, W. C., et al. (2005). VANGUARD1 encodes a pectin methylesterase that enhances pollen tube growth in the *Arabidopsis* style and transmitting tract. *Plant Cell* 17, 584–596. doi: 10.1105/tpc.104.027631
- Jiao, J., Mizukami, A. G., Sankaranarayanan, S., Yamguchi, J., Itami, K., and Higashiyama, T. (2017). Structure-activity relation of AMOR sugar molecule that activates pollen-tubes for ovular guidance. *Plant Physiol.* 173, 354–363. doi: 10.1104/pp.16.01655
- Johnson, M. A., Harper, J. F., and Palanivelu, R. (2019). A fruitful journey: pollen tube navigation from germination to fertilization. *Annu. Rev. Plant Biol.* 70, 809–837. doi: 10.1146/annurev-arplant-050718-100133
- Johnson-Brousseau, S. A., and McCormick, S. (2004). A compendium of methods useful for characterizing *Arabidopsis* pollen mutants and gametophytically-expressed genes. *Plant J.* 39, 761–775. doi: 10.1111/j.1365-313X.2004.02147.x
- Kakani, V. G., Prasad, P. V., Craufurd, P. Q., and Wheeler, T. R. (2002). Response of in vitro pollen germination and pollen tube growth of groundnut (*Arachis hypogaea* L.) genotypes to temperature. *Plant Cell Environ.* 25, 1651–1661. doi: 10.1046/j.1365-3040.2002.00943.x
- Kanaoka, M. M., and Higashiyama, T. (2015). Peptide signaling in pollen tube guidance. *Curr. Opin. Plant Biol.* 28, 127–136. doi: 10.1016/j.pbi.2015.10.006
- Kaya, H., Nakajima, R., Iwano, M., Kanaoka, M. M., Kimura, S., Takeda, S., et al. (2014). Ca²⁺-activated reactive oxygen species production by *Arabidopsis* RbohH and RbohJ is essential for proper pollen tube tip growth. *Plant Cell* 26, 1069–1080. doi: 10.1105/tpc.113.120642
- Keller, M., SPOT-ITN Consortium, and Simm, S. (2018). The coupling of transcriptome and proteome adaptation during development and heat stress response of tomato pollen. *BMC Genomics* 19:447. doi: 10.1186/s12864-018-4824-5
- Kim, S., Mollet, J. C., Dong, J., Zhang, K., Park, S. Y., and Lord, E. M. (2003). Chemocyanin, a small basic protein from the lily stigma, induces pollen tube chemotropism. *Proc. Natl. Acad. Sci. U. S. A.* 100, 16125–16130. doi: 10.1073/pnas.2533800100
- Konrad, K. R., Wudick, M. M., and Feijó, J. A. (2011). Calcium regulation of tip growth: new genes for old mechanisms. *Curr. Opin. Plant Biol.* 14, 721–730. doi: 10.1016/j.pbi.2011.09.005
- Lamaoui, M., Jemo, M., Datla, R., and Bekkaoui, F. (2018). Heat and drought stresses in crops and approaches for their mitigation. *Front. Chem.* 6:26. doi: 10.3389/fchem.2018.00026
- Le Gall, H., Philippe, F., Domon, J. M., Gillet, F., Pelloux, J., and Rayon, C. (2015). Cell wall metabolism in response to abiotic stress. *Plan. Theory* 4, 112–166. doi: 10.3390/plants4010112
- Lee, J. Y., and Lee, D. H. (2003). Use of serial analysis of gene expression technology to reveal changes in gene expression in *Arabidopsis* pollen undergoing cold stress. *Plant Physiol.* 132, 517–529. doi: 10.1104/pp.103.020511
- Leroux, C., Bouton, S., Kiefer-Meyer, M. C., Ndinyanka Fabrice, T., Mareck, A., Guénin, S., et al. (2015). PECTIN METHYLESTERASE48 is involved in *Arabidopsis* pollen grain germination. *Plant Physiol.* 167, 367–380. doi: 10.1104/pp.114.250928
- Leszczuk, A., Koziol, A., Szczuka, E., and Zdunek, A. (2019). Analysis of AGP contribution to the dynamic assembly and mechanical properties of cell wall during pollen tube growth. *Plant Sci.* 281, 9–18. doi: 10.1016/j.plantsci.2019.01.005
- Li, Y. Q., Moscatelli, A., Cai, G., and Cresti, M. (1997). Functional interactions among cytoskeleton, membranes, and cell wall in the pollen tube of flowering plants. *Int. Rev. Cytol.* 176, 133–199. doi: 10.1016/S0074-7696(08)61610-1
- Lionetti, V., Raiola, A., Camardella, L., Giovane, A., Obel, N., Pauly, M., et al. (2007). Overexpression of pectin methylesterase inhibitors in *Arabidopsis* restricts fungal infection by *Botrytis cinerea*. *Plant Physiol.* 143, 1871–1880. doi: 10.1104/pp.106.090803
- Liu, Y., Huang, W., Xian, Z., Hu, N., Lin, D., Ren, H., et al. (2017). Overexpression of SLGRAS40 in tomato enhances tolerance to abiotic stresses and influences auxin and gibberellin signaling. *Front. Plant Sci.* 8:1659. doi: 10.3389/fpls.2017.01659
- Liu, T., Ye, X., Li, M., Li, J., Qi, H., and Hu, X. (2020). H₂O₂ and NO are involved in trehalose-regulated oxidative stress tolerance in cold-stressed tomato plants. *Environ. Exp. Bot.* 171:103961. doi: 10.1016/j.envexpbot.2019.103961
- Lobell, D. B., and Gourdji, S. M. (2012). The influence of climate change on global crop productivity. *Plant Physiol.* 160, 1686–1697. doi: 10.1104/pp.112.208298
- Márton, M. L., Cordts, S., Broadhvest, J., and Dresselhaus, T. (2005). Micropylar pollen tube guidance by egg apparatus 1 of maize. *Science* 307, 573–576. doi: 10.1126/science.1104954
- Mesihovic, A., Iannacone, R., Firon, N., and Fragkostefanakis, S. (2016). Heat stress regimes for the investigation of pollen thermotolerance in crop plants. *Plant Reprod.* 29, 93–105. doi: 10.1007/s00497-016-0281-y
- Michard, E., Lima, P. T., Borges, F., Silva, A. C., Portes, M. T., Carvalho, J., et al. (2011). Glutamate receptor-like genes form Ca²⁺ channels in pollen tubes and are regulated by pistil D-serine. *Science* 332, 434–437. doi: 10.1126/science.1201101
- Mittler, R. (2017). ROS are good. *Trends Plant Sci.* 22, 11–19. doi: 10.1016/j.tplants.2016.08.002
- Mizukami, A. G., Inatsugi, R., Jiao, J., Kotake, T., Kuwata, K., Ootani, K., et al. (2016). The AMOR arabinogalactan sugar chain induces pollen-tube competency to respond to ovular guidance. *Curr. Biol.* 26, 1091–1097. doi: 10.1016/j.cub.2016.02.040
- Mo, Y., Nagel, C., and Taylor, L. P. (1992). Biochemical complementation of chalcone synthase mutants defines a role for flavonols in functional pollen. *Proc. Natl. Acad. Sci. U. S. A.* 89, 7213–7217. doi: 10.1073/pnas.89.15.7213
- Mollet, J. C., Kim, S., Jauh, G. Y., and Lord, E. M. (2002). Arabinogalactan proteins, pollen tube growth, and the reversible effects of Yariv phenylglycoside. *Protoplasma* 219, 89–98. doi: 10.1007/s007090200009
- Mollet, J. C., Leroux, C., Dardelle, F., and Lehner, A. (2013). Cell wall composition, biosynthesis, and remodeling during pollen tube growth. *Plan. Theory* 2, 107–147. doi: 10.3390/plants2010107
- Muhlemann, J. K., Younts, T. L. B., and Muday, G. K. (2018). Flavonols control pollen tube growth and integrity by regulating ROS homeostasis during high-temperature stress. *Proc. Natl. Acad. Sci. U. S. A.* 115, 11188–11197. doi: 10.1073/pnas.1811492115
- Nguema-Ona, E., Coimbra, S., Vicré-Gibouin, M., Mollet, J. C., and Driouich, A. (2012). Arabinogalactan proteins in root and pollen-tube cells: distribution and functional aspects. *Ann. Bot.* 110, 383–404. doi: 10.1093/aob/mcs143
- Nishikawa, S. I., Zinkl, G. M., Swanson, R. J., Maruyama, D., and Preuss, D. (2005). Callose (β -1, 3 glucan) is essential for *Arabidopsis* pollen wall patterning, but not tube growth. *BMC Plant Biol.* 5:22. doi: 10.1186/1471-2229-5-22
- Novaković, L., Guo, T., Bacic, A., Sampathkumar, A., and Johnson, K. L. (2018). Hitting the wall—sensing and signaling pathways involved in plant cell wall remodeling in response to abiotic stress. *Plan. Theory* 7:89. doi: 10.3390/plants7040089
- Ohnishi, S., Miyoshi, T., and Shirai, S. (2010). Low temperature stress at different flower developmental stages affects pollen development, pollination, and pod set in soybean. *Environ. Exp. Bot.* 69, 56–62. doi: 10.1016/j.envexpbot.2010.02.007
- O’Kane, D., Gill, V., Boyd, P., and Burdon, R. (1996). Chilling, oxidative stress and antioxidant responses in *Arabidopsis thaliana* callus. *Planta* 198, 371–377. doi: 10.1007/BF00620053
- Okuda, S., Tsutsui, H., Shiina, K., Sprunck, S., Takeuchi, H., Yui, R., et al. (2009). Defensin-like polypeptide LURES are pollen tube attractants secreted from synergid cells. *Nature* 458, 357–361. doi: 10.1038/nature07882
- Oliver, S. N., Van Dongen, J. T., Alfred, S. C., Mamun, E. A., Zhao, X., Saini, H. S., et al. (2005). Cold-induced repression of the rice anther-specific cell wall invertase gene OSINV4 is correlated with sucrose accumulation and pollen sterility. *Plant Cell Environ.* 28, 1534–1551. doi: 10.1111/j.1365-3040.2005.01390.x
- Pacini, E., and Dolferus, R. (2019). Pollen developmental arrest: maintaining pollen fertility in a world with a changing climate? *Front. Plant Sci.* 10:679. doi: 10.3389/fpls.2019.00679
- Parre, E., and Geitmann, A. (2005). More than a leak sealant. The mechanical properties of callose in pollen tubes. *Plant Physiol.* 137, 274–286. doi: 10.1104/pp.104.050773
- Paynel, F., Leroux, C., Surcouf, O., Schaumann, A., Pelloux, J., Driouich, A., et al. (2014). Kiwi fruit PME1 inhibits PME activity, modulates root elongation

- and induces pollen tube burst in *Arabidopsis thaliana*. *Plant Growth Regul.* 74, 285–297. doi: 10.1007/s10725-014-9919-7
- Pereira, A. M., Nobre, M. S., Pinto, S. C., Lopes, A. L., Costa, M. L., Masiero, S., et al. (2016). “Love is strong, and you’re so sweet”: JAGGER is essential for persistent synergid degeneration and polytubey block in *Arabidopsis thaliana*. *Mol. Plant* 9, 601–614. doi: 10.1016/j.molp.2016.01.002
- Porch, T. G., and Jahn, M. (2001). Effects of high-temperature stress on microsporogenesis in heat-sensitive and heat-tolerant genotypes of *Phaseolus vulgaris*. *Plant Cell Environ.* 24, 723–731. doi: 10.1046/j.1365-3040.2001.00716.x
- Potocký, M., Jones, M. A., Bezvoda, R., Smirnov, N., and Zárský, V. (2007). Reactive oxygen species produced by NADPH oxidase are involved in pollen tube growth. *New Phytol.* 174, 742–751. doi: 10.1111/j.1469-8137.2007.02042.x
- Potocký, M., Pejchar, P., Gutkowska, M., Jiménez-Quesada, M. J., Potocká, A., de Dios, A. J., et al. (2012). NADPH oxidase activity in pollen tubes is affected by calcium ions, signaling phospholipids and Rac/Rop GTPases. *J. Plant Physiol.* 169, 1654–1663. doi: 10.1016/j.jplph.2012.05.014
- Prado, A. M., Porterfield, D. M., and Fejój, J. A. (2004). Nitric oxide is involved in growth regulation and re-orientation of pollen tubes. *Development* 131, 2707–2714. doi: 10.1242/dev.01153
- Prasad, T. K., Anderson, M. D., Martin, B. A., and Stewart, C. R. (1994). Evidence for chilling-induced oxidative stress in maize seedlings and a regulatory role for hydrogen peroxide. *Plant Cell* 6, 65–74. doi: 10.2307/3869675
- Prasad, P. V., Boote, K. J., Allen, L. H. Jr., Sheehy, J. E., and Thomas, J. M. (2006). Species, ecotype and cultivar differences in spikelet fertility and harvest index of rice in response to high temperature stress. *Field Crop Res.* 95, 398–411. doi: 10.1016/j.fcr.2005.04.008
- Qin, P., Ting, D., Shieh, A., and McCormick, S. (2012). Callose plug deposition patterns vary in pollen tubes of *Arabidopsis thaliana* ecotypes and tomato species. *BMC Plant Biol.* 12:178. doi: 10.1186/1471-2229-12-178
- Rodríguez-Enriquez, M. J., Mehdi, S., Dickinson, H. G., and Grant-Downton, R. T. (2013). A novel method for efficient in vitro germination and tube growth of *Arabidopsis thaliana* pollen. *New Phytol.* 197, 668–679. doi: 10.1111/nph.12037
- Sakata, T., Oda, S., Tsunaga, Y., Shomura, H., Kawagishi-Kobayashi, M., Aya, K., et al. (2014). Reduction of gibberellin by low temperature disrupts pollen development in rice. *Plant Physiol.* 164, 2011–2019. doi: 10.1104/pp.113.234401
- Saruyama, H., and Tanida, M. (1995). Effect of chilling on activated oxygen-scavenging enzymes in low temperature-sensitive and -tolerant cultivars of rice (*Oryza sativa* L.). *Plant Sci.* 109, 105–113. doi: 10.1016/0168-9452(95)04156-0
- Shabani, F., Kumar, L., and Taylor, S. (2012). Climate change impacts on the future distribution of date palms: a modeling exercise using CLIMEX. *PLoS One* 7:e48021. doi: 10.1371/journal.pone.0048021
- Sharma, K. D., and Nayyar, H. (2016). Regulatory networks in pollen development under cold stress. *Front. Plant Sci.* 7:402. doi: 10.3389/fpls.2016.00402
- Snow, A. A., and Spira, T. P. (1991a). Pollen vigour and the potential for sexual selection in plants. *Nature* 352, 796–797.
- Snow, A. A., and Spira, T. P. (1991b). Differential pollen-tube growth rates and nonrandom fertilization in *Hibiscus moscheutos* (Malvaceae). *Am. J. Bot.* 78, 1419–1426.
- Solomon, S., Qin, D., Manning, M., Marquis, M., Averyt, K., Tignor, MMB, et al. (2007). *Climate Change 2007: The Physical Science Basis. Contribution of Working Group I to the Fourth Assessment Report of the Intergovernmental Panel on Climate Change*. New York: Cambridge University Press.
- Sorkheh, K., Shiran, B., Rouhi, V., Khodambashi, M., Wolukau, J. N., and Ercisli, S. (2011). Response of in vitro pollen germination and pollen tube growth of almond (*Prunus dulcis* mill.) to temperature, polyamines and polyamine synthesis inhibitor. *Biochem. Syst. Ecol.* 39, 749–757. doi: 10.1016/j.bse.2011.06.015
- Speranza, A., Crinelli, R., Scoccianti, V., and Geitmann, A. (2012). Reactive oxygen species are involved in pollen tube initiation in kiwifruit. *Plant Biol.* 14, 64–76. doi: 10.1111/j.1438-8677.2011.00479.x
- Srinivasan, A., Saxena, N. P., and Johansen, C. (1999). Cold tolerance during early reproductive growth of chickpea (*Cicer arietinum* L.): genetic variation in gamete development and function. *Field Crop Res.* 60, 209–222. doi: 10.1016/S0378-4290(98)00126-9
- Sterling, J. D., Atmodjo, M. A., Inwood, S. E., Kolli, V. K., Quigley, H. F., Hahn, M. G., et al. (2006). Functional identification of an *Arabidopsis* pectin biosynthetic homogalacturonan galacturonosyltransferase. *Proc. Natl. Acad. Sci. U. S. A.* 103, 5236–5241. doi: 10.1073/pnas.0600120103
- Suzuki, N., and Mittler, R. (2006). Reactive oxygen species and temperature stresses: a delicate balance between signaling and destruction. *Physiol. Plant.* 126, 45–51. doi: 10.1111/j.0031-9317.2005.00582.x
- Tarkowski, Ł. P., and Van den Ende, W. (2015). Cold tolerance triggered by soluble sugars: a multifaceted countermeasure. *Front. Plant Sci.* 6:203. doi: 10.3389/fpls.2015.00203
- Taylor, L. P., and Hepler, P. K. (1997). Pollen germination and tube growth. *Annu. Rev. Plant Biol.* 48, 461–491. doi: 10.1146/annurev.plant.48.1.461
- Tenhaken, R. (2015). Cell wall remodeling under abiotic stress. *Front. Plant Sci.* 5:771. doi: 10.3389/fpls.2014.00771
- Thakur, P., Kumar, S., Malik, J. A., Berger, J. D., and Nayyar, H. (2010). Cold stress effects on reproductive development in grain crops: an overview. *Environ. Exp. Bot.* 67, 429–443. doi: 10.1016/j.envexpbot.2009.09.004
- Tian, G. W., Chen, M. H., Zaltsman, A., and Citovsky, V. (2006). Pollen-specific pectin methyl-esterase involved in pollen tube growth. *Dev. Biol.* 294, 83–91. doi: 10.1016/j.ydbio.2006.02.026
- Tucker, M. R., Lou, H., Aubert, M. K., Wilkinson, L. G., Little, A., Houston, K., et al. (2018). Exploring the role of cell wall-related genes and polysaccharides during plant development. *Plan. Theory* 7:42. doi: 10.3390/plants7020042
- Williams, J. H. (2008). Novelty of the flowering plant pollen tube underlie diversification of a key life history stage. *Proc. Natl. Acad. Sci. U. S. A.* 105, 11259–11263. doi: 10.1073/pnas.0800036105
- Wolf, S., and Greiner, S. (2012). Growth control by cell wall pectins. *Protoplasma* 249, 169–175. doi: 10.1007/s00709-011-0371-5
- Wolf, S., Mouille, G., and Pelloux, J. (2009). Homogalacturonan methyl-esterification and plant development. *Mol. Plant* 2, 851–860. doi: 10.1093/mp/ssp066
- Woriedh, M., Wolf, S., Márton, M. L., Hinze, A., Gahrtz, M., Becker, D., et al. (2013). External application of gametophyte-specific ZmPMEI1 induces pollen tube burst in maize. *Plant Reprod.* 26, 255–266. doi: 10.1007/s00497-013-0221-z
- Wu, H. M., Wang, H., and Cheung, A. Y. (1995). A pollen tube growth stimulatory glycoprotein is deglycosylated by pollen tubes and displays a glycosylation gradient in the flower. *Cell* 82, 395–403. doi: 10.1016/0092-8674(95)90428-X
- Xiong, L. B., Sekiya, J., and Shimose, N. (1988). Stimulation of Lilium pollen germination by pyrroloquinoline quinone. *Agric. Biol. Chem.* 52, 1065–1066.
- Yadav, S. K. (2010). Cold stress tolerance mechanisms in plants. A review. *Agron. Sustain. Dev.* 30, 515–527. doi: 10.1051/agro/2009050
- Yan, F., Deng, W., Pang, X., Gao, Y., Chan, H., Zhang, Q., et al. (2019). Overexpression of the KNOX gene Tkn4 affects pollen development and confers sensitivity to gibberellin and auxin in tomato. *Plant Sci.* 281, 61–71. doi: 10.1016/j.plantsci.2018.12.024
- Yan, M. Y., Xie, D. L., Cao, J. L., Xia, X. J., Shi, K., Zhou, Y. H., et al. (2020). Brassinosteroid-mediated reactive oxygen species are essential for tapetum degradation and pollen fertility in tomato. *Plant J.* 102, 931–947. doi: 10.1111/tbj.14672
- Ylstra, B., Touraev, A., Moreno, R. M. B., Stöger, E., van Tunen, A. J., Vicente, O., et al. (1992). Flavonols stimulate development, germination, and tube growth of tobacco pollen. *Plant Physiol.* 100, 902–907. doi: 10.1104/pp.100.2.902
- Zamir, D., Tanksley, S. D., and Jones, R. A. (1981). Low temperature effect on selective fertilization by pollen mixtures of wild and cultivated tomato species. *Theor. Appl. Genet.* 59, 235–238. doi: 10.1007/BF00265501
- Zamir, D., Tanksley, S. D., and Jones, R. A. (1982). Haploid selection for low temperature tolerance of tomato pollen. *Genetics* 101, 129–137. doi: 10.1093/genetics/101.1.129
- Zaveska Drabkova, L., and Honys, D. (2017). Evolutionary history of callose synthases in terrestrial plants with emphasis on proteins involved in male gametophyte development. *PLoS One* 12:e0187331. doi: 10.1371/journal.pone.0187331
- Zhang, L., Guo, X., Qin, Y., Feng, B., Wu, Y., He, Y., et al. (2020). The chilling tolerance divergence 1 protein confers cold stress tolerance in processing tomato. *Plant Physiol. Biochem.* 151, 34–46. doi: 10.1016/j.plaphy.2020.03.007
- Zhang, G. F., and Staehelin, L. A. (1992). Functional compartmentation of the Golgi apparatus of plant cells: immunocytochemical analysis of high-pressure frozen-and freeze-substituted sycamore maple suspension culture cells. *Plant Physiol.* 99, 1070–1083. doi: 10.1104/pp.99.3.1070

Zinn, K. E., Tunc-Ozdemir, M., and Harper, J. F. (2010). Temperature stress and plant sexual reproduction: uncovering the weakest links. *J. Exp. Bot.* 61, 1959–1968. doi: 10.1093/jxb/erq053

Conflict of Interest: The authors declare that the research was conducted in the absence of any commercial or financial relationships that could be construed as a potential conflict of interest.

Publisher's Note: All claims expressed in this article are solely those of the authors and do not necessarily represent those of their affiliated organizations, or those of the publisher, the editors and the reviewers. Any product that may

be evaluated in this article, or claim that may be made by its manufacturer, is not guaranteed or endorsed by the publisher.

Copyright © 2021 Laggoun, Ali, Tourneur, Prudent, Gügi, Kiefer-Meyer, Mareck, Cruz, Yvin, Nguema-Ona, Mollet, Jamois and Lehner. This is an open-access article distributed under the terms of the Creative Commons Attribution License (CC BY). The use, distribution or reproduction in other forums is permitted, provided the original author(s) and the copyright owner(s) are credited and that the original publication in this journal is cited, in accordance with accepted academic practice. No use, distribution or reproduction is permitted which does not comply with these terms.