



HAL
open science

Continuous chiral resolution by diastereomeric salt formation of racemic Ibuprofen in a Couette-Taylor crystallizer

Laureline Marc, Jean-Marie Schneider, Gérard Coquerel

► **To cite this version:**

Laureline Marc, Jean-Marie Schneider, Gérard Coquerel. Continuous chiral resolution by diastereomeric salt formation of racemic Ibuprofen in a Couette-Taylor crystallizer. Journées Nationales Réseau Cristech (CNRS), Oct 2020, Ecully, France. hal-03359382

HAL Id: hal-03359382

<https://normandie-univ.hal.science/hal-03359382>

Submitted on 29 Nov 2021

HAL is a multi-disciplinary open access archive for the deposit and dissemination of scientific research documents, whether they are published or not. The documents may come from teaching and research institutions in France or abroad, or from public or private research centers.

L'archive ouverte pluridisciplinaire **HAL**, est destinée au dépôt et à la diffusion de documents scientifiques de niveau recherche, publiés ou non, émanant des établissements d'enseignement et de recherche français ou étrangers, des laboratoires publics ou privés.

Introduction

Batch production mode [1]

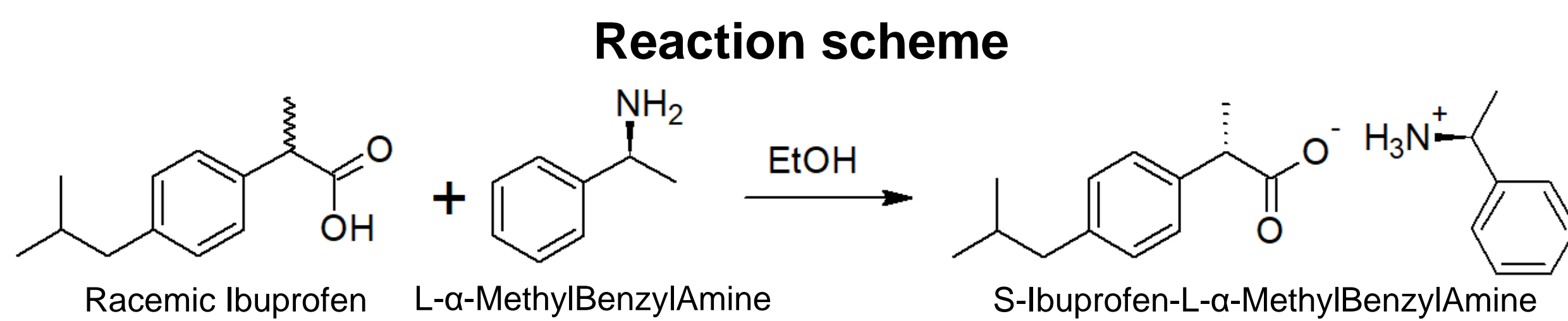
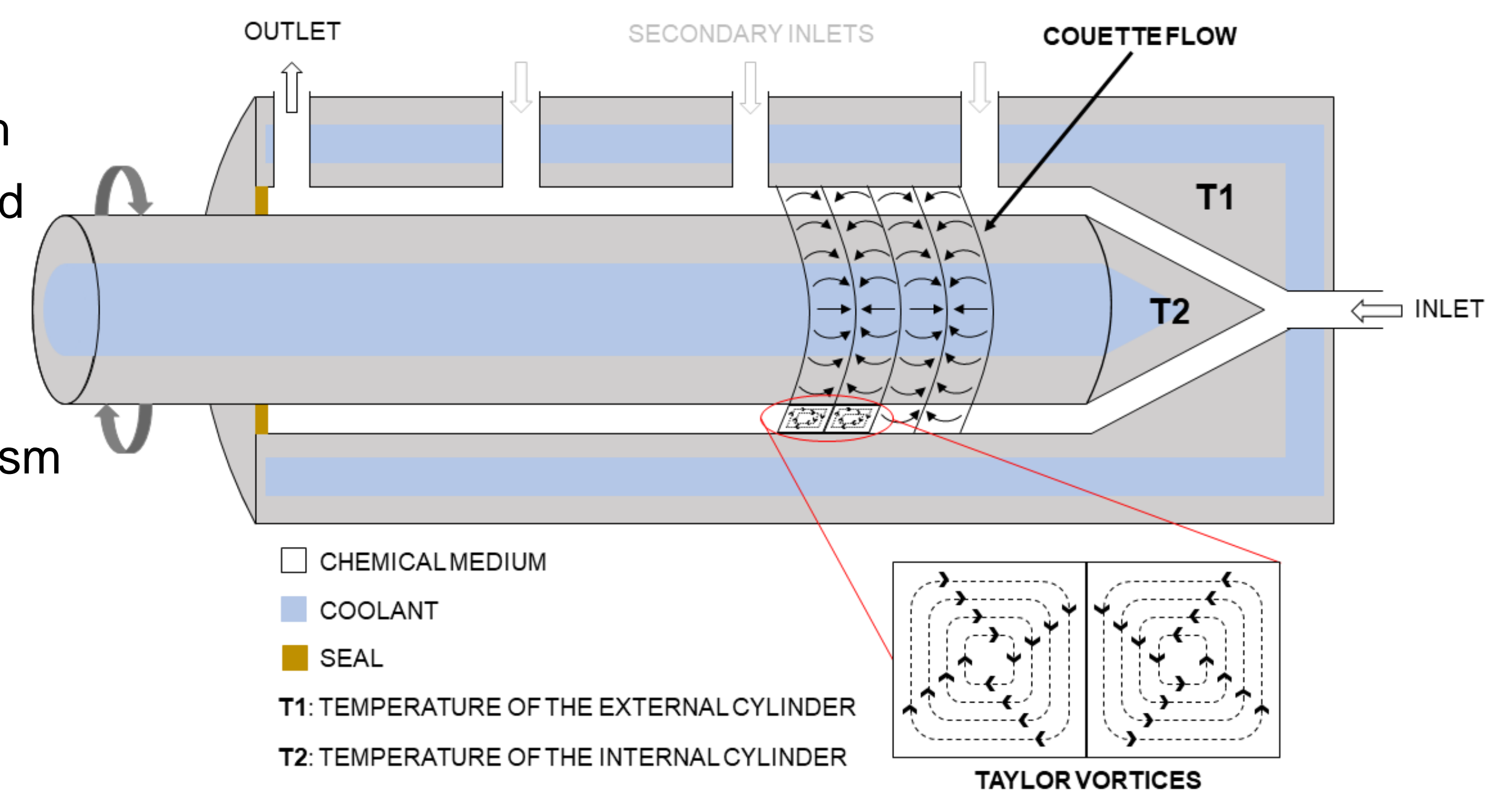
- legacy in pharmaceutical industry
- weaknesses such as batch-to-batch quality variation

Continuous production mode [2]

- steady-state functioning, i.e. more constant quality product
- better process control

Couette-Taylor crystallizer

- specific flow characteristics at high rotation speed: Couette flow coupled with Taylor vortices [3]
- impact on crystal size distribution (CSD), morphology and polymorphism in crystallization processes [4]



Batch process

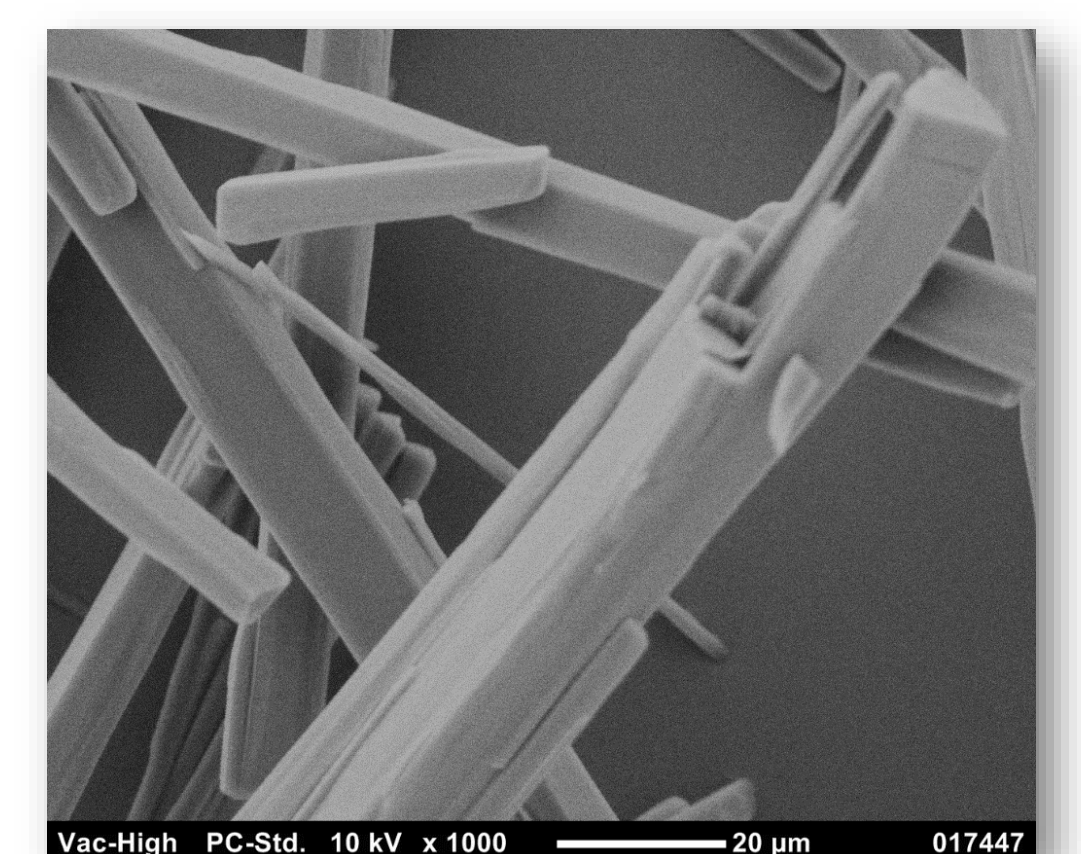
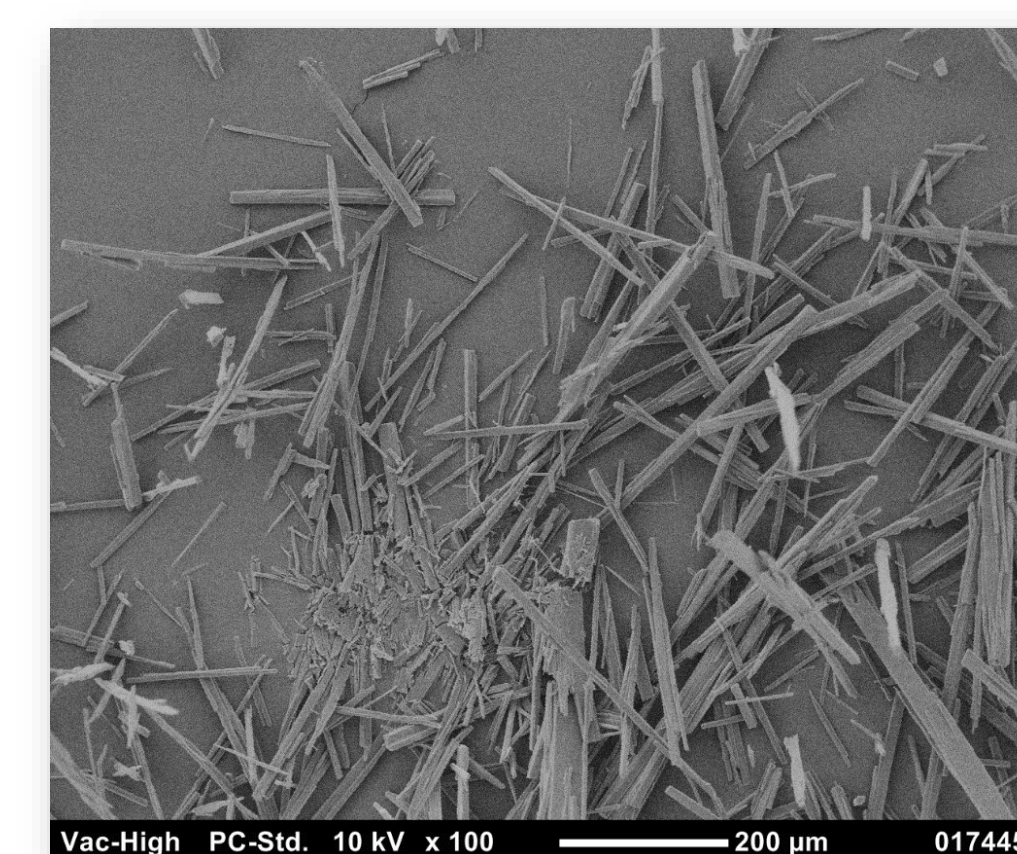
Conditions

Scale: 10g

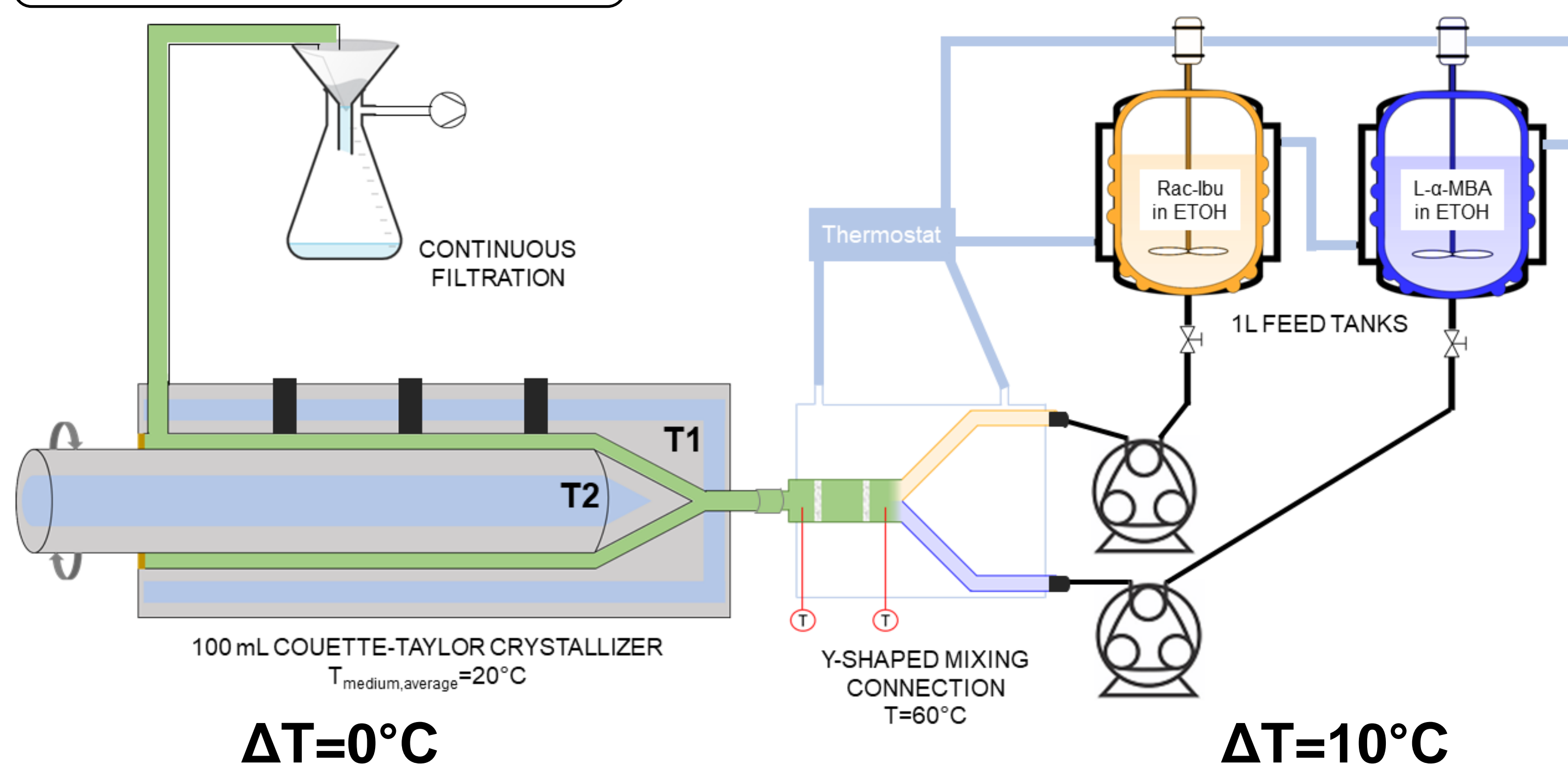
Stirring speed (mechanical stirrer):
200rpm

Results

Yield	Diastereomeric excess	Diastereomeric yield
41%	0.58	24%



Continuous process



Conditions

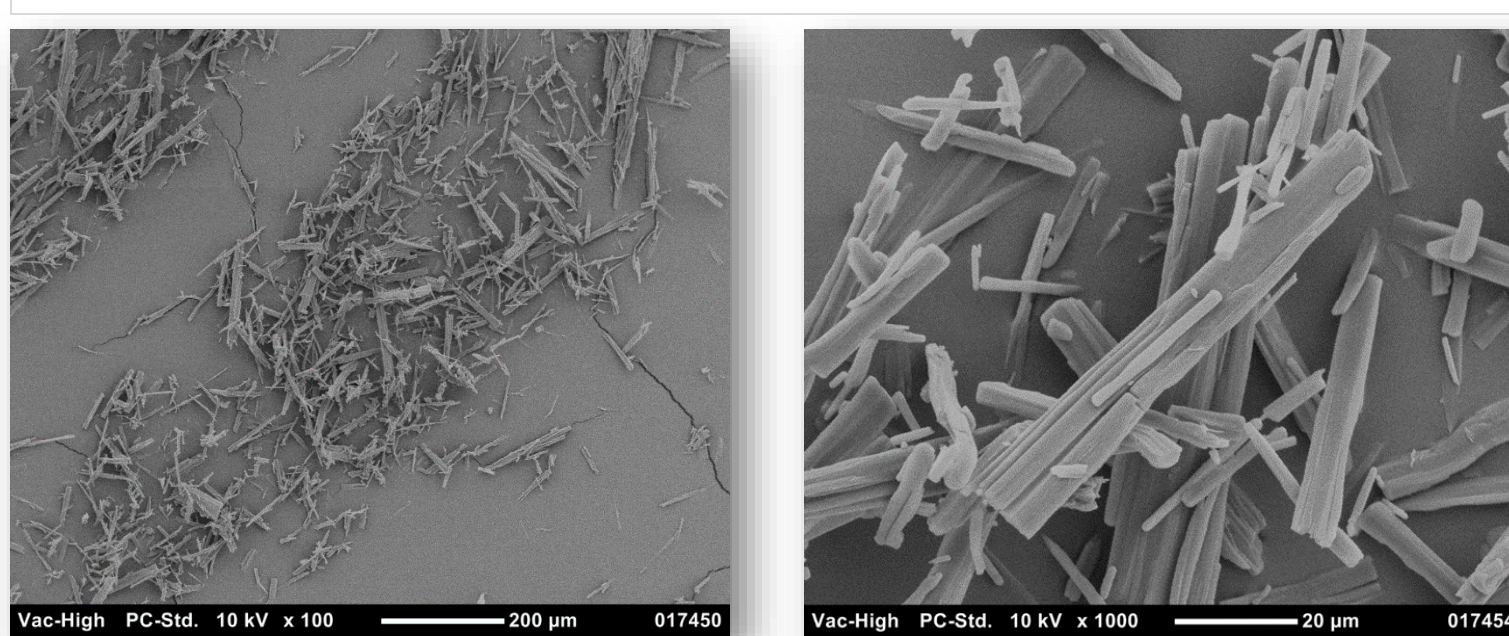
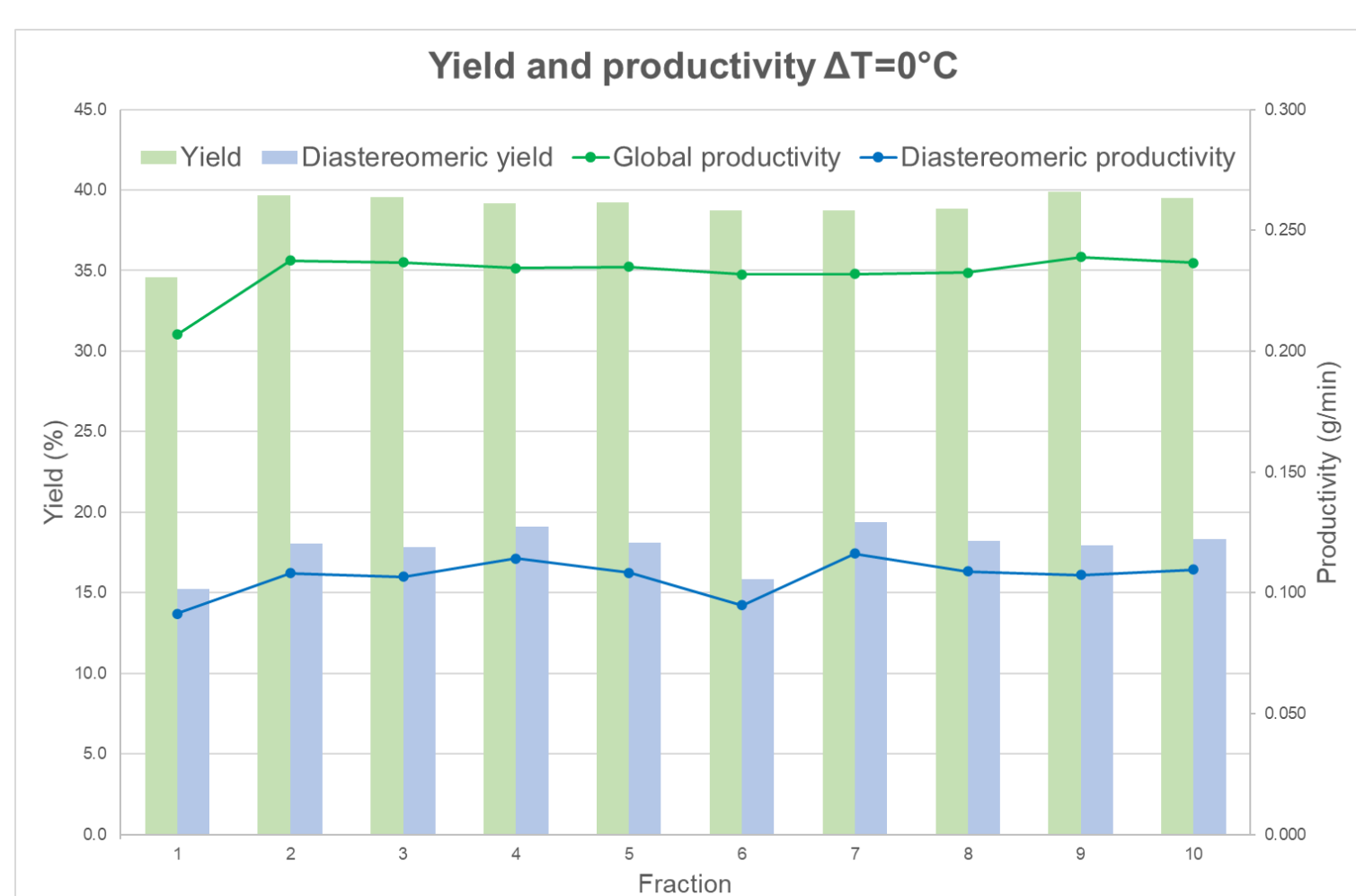
Scale:
70g

Stirring speed Ω :
1000rpm

Flowrate:
3.34mL/min

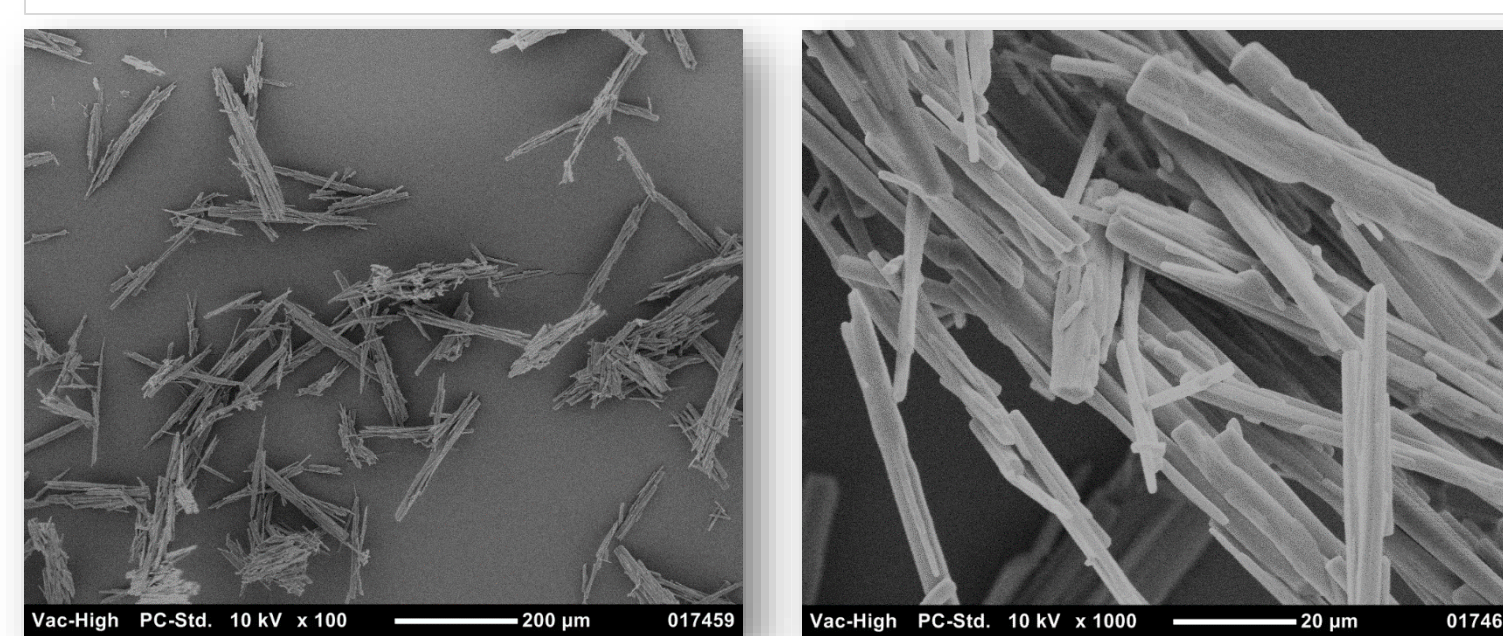
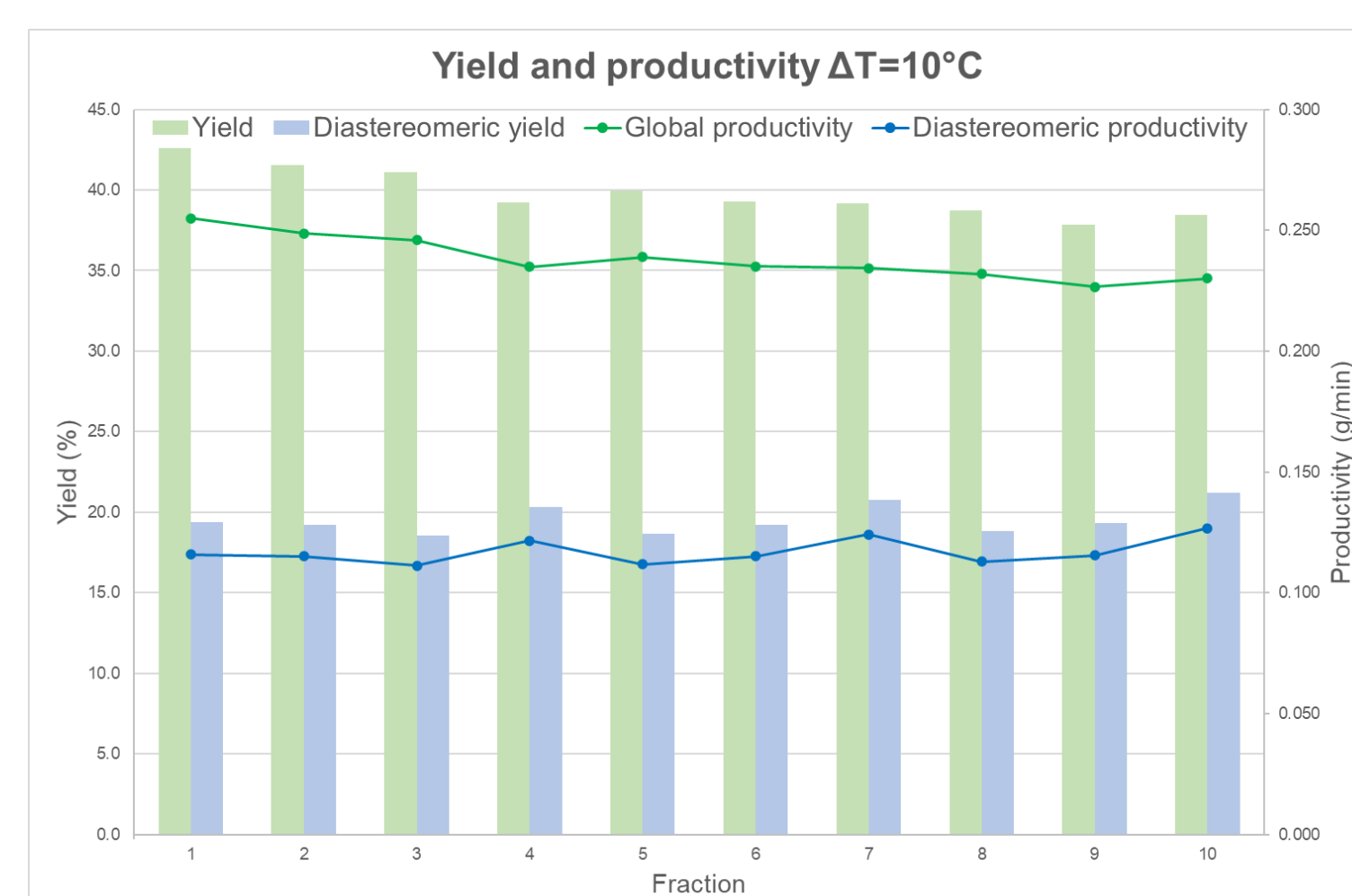
=> Variation of the temperature difference between the two cylinders with $T_2 > T_1$

$\Delta T = 0^\circ\text{C}$



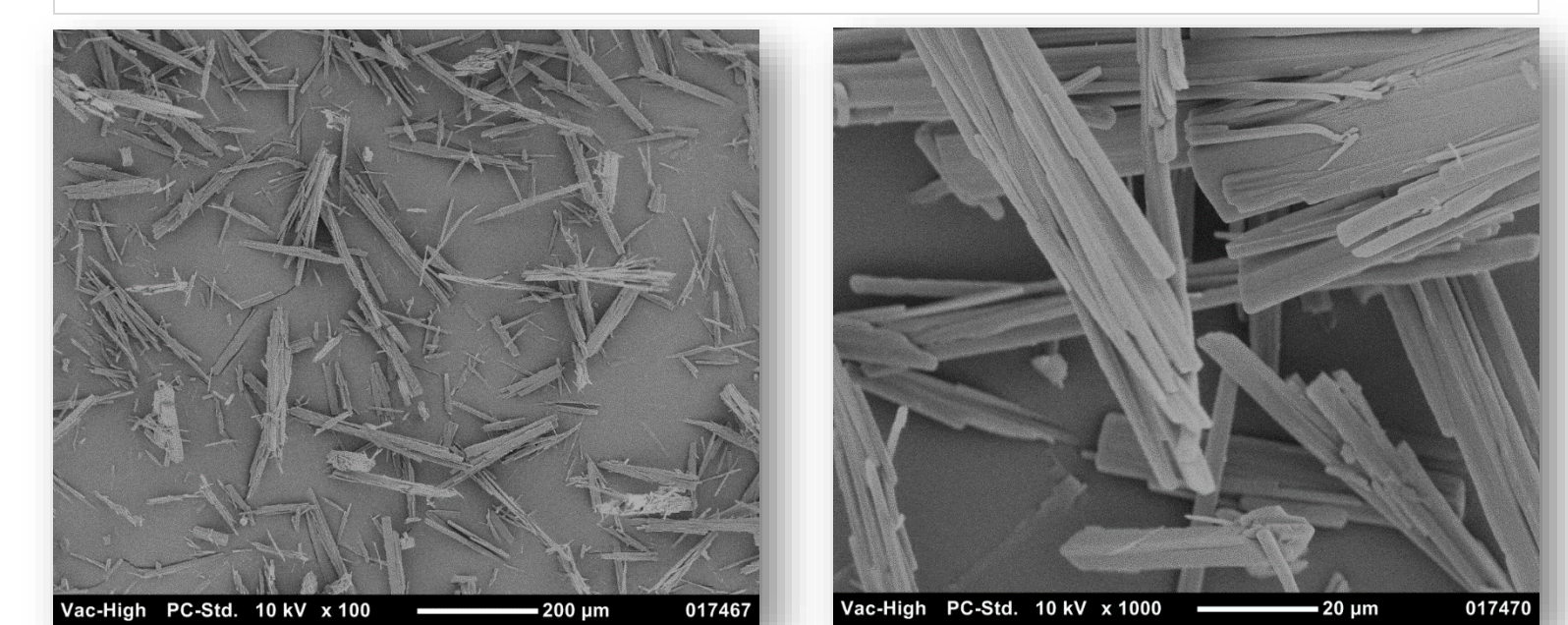
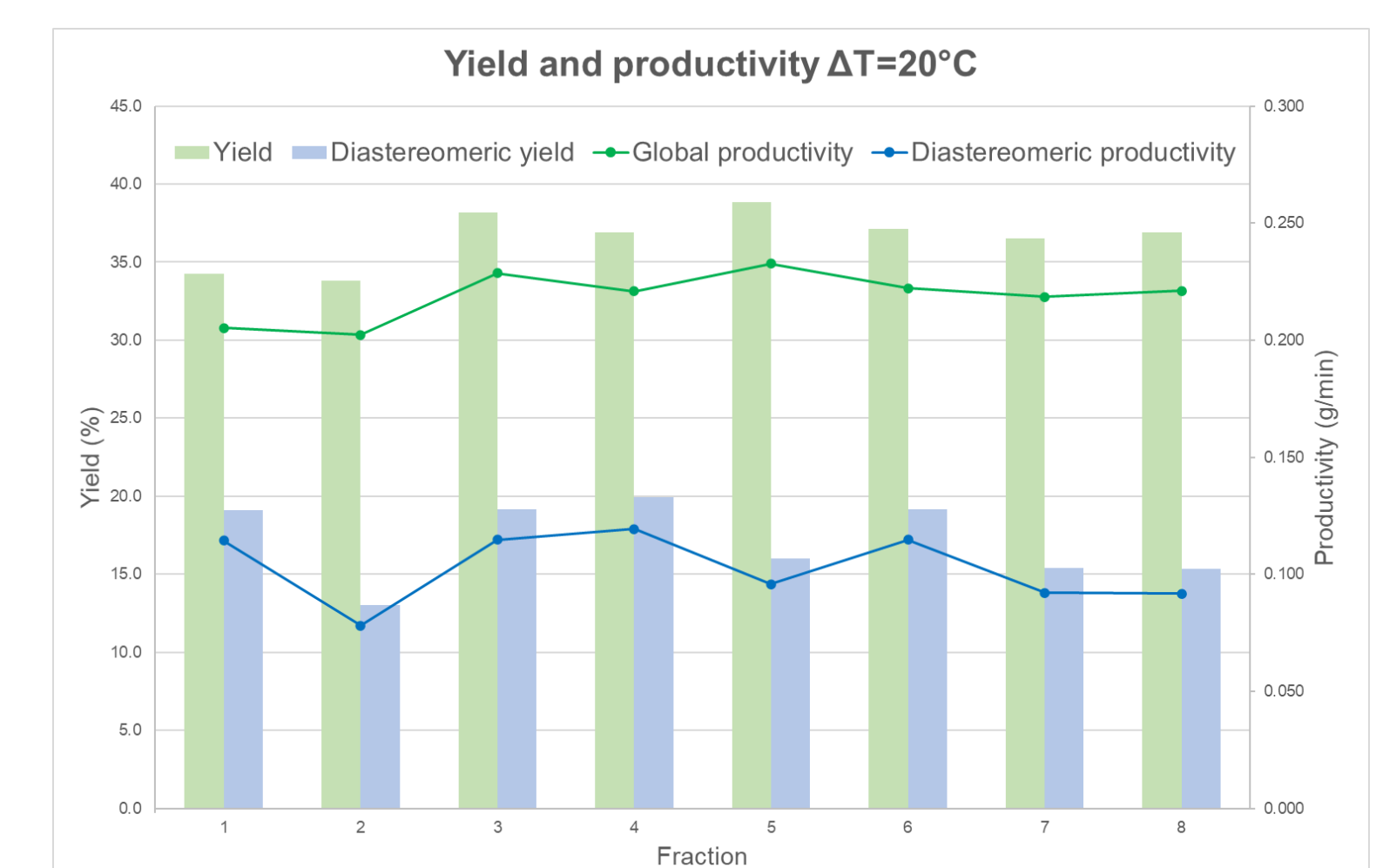
=> **Steady state functioning** reached quickly

$\Delta T = 10^\circ\text{C}$



=> **Crystal size** increases when the temperature difference increases

$\Delta T = 20^\circ\text{C}$



=> At this ΔT , the product quality variation can be due to the crystal size

=> $\Delta T = 10^\circ\text{C}$ seems to give the best results regarding product quality

Conclusions and perspectives

- => The **yield** of the **continuous process** is close to that obtained in **batch mode**. By contrast, the **chiral purity** is lower than that of the batch mode. The reason might be linked to the **filtration process** which is not adapted to the continuous mode.
- => It is noteworthy that the **combination of both Ω and ΔT** can have an influence on chiral purity and crystal size [5].
- => The continuous process needs to be optimized by studying **variations of the stirring speed Ω , the flowrate, the temperature inside the CT crystallizer, and the sign of ΔT .**

[References]

- [1] Ma et al., Organic Process Research & Development, *published ahead of print* (2020).
- [2] D. L. Hughes, Organic Process Research & Development, vol. 22, n°1, p. 13-20 (2018).
- [3] W.-S. Kim, Journal of Chemical Engineering of Japan, vol. 47, n°2, p. 115-123 (2014).
- [4] W.-S. Kim, T. Yu, Z. Wu, U.S. Patent Application 2017/0081188 A1, (Mar. 23 2017)
- [5] M. Schindler, Thèse de doctorat : physique. Rouen: Université de Rouen Normandie, 2020, 144p.