



HAL
open science

Coastal chalk cliff retreat rates during the Holocene, inferred from submarine platform morphology and cosmogenic exposure along the Normandy coast (NW France)

Timothée Duguet, Anne Duperret, Stéphane Costa, Vincent Regard, Grégoire Maillet

► To cite this version:

Timothée Duguet, Anne Duperret, Stéphane Costa, Vincent Regard, Grégoire Maillet. Coastal chalk cliff retreat rates during the Holocene, inferred from submarine platform morphology and cosmogenic exposure along the Normandy coast (NW France). *Marine Geology*, 2021, 433, pp.106405. 10.1016/j.margeo.2020.106405 . hal-03113160

HAL Id: hal-03113160

<https://normandie-univ.hal.science/hal-03113160>

Submitted on 3 Jan 2023

HAL is a multi-disciplinary open access archive for the deposit and dissemination of scientific research documents, whether they are published or not. The documents may come from teaching and research institutions in France or abroad, or from public or private research centers.

L'archive ouverte pluridisciplinaire **HAL**, est destinée au dépôt et à la diffusion de documents scientifiques de niveau recherche, publiés ou non, émanant des établissements d'enseignement et de recherche français ou étrangers, des laboratoires publics ou privés.



Distributed under a Creative Commons Attribution - NonCommercial 4.0 International License

1 Coastal chalk cliff retreat rates during the Holocene, inferred 2 from submarine platform morphology and cosmogenic 3 exposure along the Normandy coast (NW France) 4

5 Timothée Duguet ^a, Anne Duperret ^a, Stéphane Costa ^b, Vincent Regard ^c, Grégoire Maillet ^d

6

7 a. Normandie Université, UMR 6294 LOMC, CNRS, UNILEHAVRE, 53 rue de Prony, 76600 Le Havre, France

8 b. Normandie Université, UMR 6554 LETG-Caen, CNRS, UNICAEN, Esplanade de la Paix, 14032 Caen, France

9 c. Université de Toulouse, GET, CNRS, IRD, UPS, CNES, 14 Av. Edouard Belin, 31400 Toulouse, France

10 d. UMR 6112 LPG-Angers, CNRS, Université d'Angers, 2 boulevard Lavoisier, 49000 Angers, France

11

12 **Abstract**

13 Submerged marine terraces potentially provide crucial information on past sea-level variations and
14 paleo-coastline locations that may be used to estimate long-term coastal erosion rates. The Normandy
15 coastline has recently been surveyed using a shallow water high-resolution mapping system. We
16 identified a new continuous submarine platform, called the inner platform, limited by a shore parallel
17 edge located between -9 m and -10 m (NGF) along the Normandy chalk coastline. A lower rock
18 platform, called the outer platform, ranging from about -14 m to -17 m (NGF) appears locally. This
19 corresponds to inherited preserved submarine terraces created during a past sea level highstand. The
20 high cosmogenic ¹⁰Be concentration measured at the end of Mesnil-Val inner shore platform (including
21 intertidal and subtidal shore platforms) is attributed to the last glacial cliff location at 6.5 ky ± 1 ky.
22 From the spatial edge location of the inner platform in Normandy, we estimated cliff retreat rates since
23 6.5 ky ± 1 ky ranging from 0.051 ± 0.008 m/y to 0.090 ± 0.014 m/y from place to place. Comparisons
24 with the current coastal chalk cliffs indicate a mean retreat rate estimated over the contemporary
25 period suggesting such long-term retreat rates are 33% to 57% lower than the contemporary ones
26 (0.10 m/y to 0.18 m/y). This confirms a contemporary acceleration of chalk cliff system retreat rates.

27

28 **Keywords**

29 Coastal cliffs; chalk; erosion; rock platform; Holocene; cosmogenic dating

30

31 **1. Introduction**

32 The erosion of the coastal chalk cliffs on the English Channel is a topic of great significance due to the
33 natural hazards and risks induced by cliff collapses. Little is known about long-term (Holocene) cliff
34 retreat rates, whereas the contemporary erosion rates have been estimated on both sides of the
35 English Channel using different methods and over several periods. Analysis periods are constrained
36 due to the scant availability of historical photographs and maps, reaching a maximal period of 150
37 years in the UK (Dornbusch et al., 2006, 2008) and 162 years in France, *i.e.* from 1824 to 1986
38 (Hénaff et al., 2002). Nowadays, the Normandy chalk cliff coastline is experiencing erosion rates of 0.10
39 m/y to 0.30 m/y (Costa et al., 2004; Letortu et al., 2014). Some recent methodologies based on
40 cosmogenic dating (^{10}Be) were used in coastal marine environments and allow for the estimation of
41 erosion rates over periods reaching several millennia. These methodologies were used on sites such
42 as Normandy, France (Regard et al., 2012), in Korea (Choi et al., 2012), in East Sussex, UK (Hurst et
43 al., 2016), in South Brittany, France (Raimbault et al., 2018a), and in Yorkshire, UK (Swirad, 2018).
44 On the one hand, Regard et al. (2012) used ^{10}Be dating at Mesnil-Val to quantify Normandy cliff
45 erosion rates over 3000 years (0.11-0.13 m/y), which were found to be similar to the erosion rates of
46 the contemporary period estimated with photogrammetry comparisons on the same study site over the
47 last 42 years (0.15 m/y) (Costa et al., 2004; Letortu et al., 2014, 2015). Similarly, on the UK North Sea
48 coast, Swirad (2018) using ^{10}Be concentrations found a ~ 0.05 m/y millennial retreat rate in Whitby
49 which is not significantly different from short-term rates (0.027 ± 0.029 m/y calculated from 7 years of
50 high resolution monitoring using terrestrial laser scanning (Rosser et al, 2013)). On the other hand,
51 Hurst et al. (2016) extrapolated coastal cliff retreat rates for two sites on the East Sussex coast and
52 covering most of the Holocene period. Retreat rates of 0.02-0.06 m/y were calculated from ^{10}Be dating
53 on a 250 m to 350 m wide platform on two sites. These long-term cliff retreat rates contrast with
54 records obtained over the last 150 years of rapid retreat estimated from historical maps and
55 photogrammetry comparisons (0.22-0.32 m/y) (Dornbusch et al., 2008). Hurst et al. (2016) concluded
56 that contemporary retreat rates cannot be extrapolated back in time, and instead, cliff retreat rates
57 must have recently accelerated to their observed values.

58 The aim of this paper is to precisely map coastal submarine platforms using high-resolution marine
59 tools to determine and date, using ^{10}Be , specific geomorphological features that are indicative of past
60 cliff erosion processes. These long-term retreat rates will then be compared to contemporary ones to
61 demonstrate whether the retreat of chalk cliff systems is increasing or not in Normandy.

62 Previous works on long-term cliff retreat using ^{10}Be concentrations are based on a steady-state
63 process of erosion that led to a continuous landward translation of the coastline with a similar shore
64 platform shape and gradient, with the elevation of the cliff-platform junction (CPJ) tracking relative sea-
65 level measurements (RSL) (Regard et al., 2012; Hurst et al., 2016, 2017). Hurst et al (2017)
66 developed a simple numerical model for dynamic platform evolution (RoBoCoP model), which is
67 broadly similar to those of Sunamura (1992), Anderson et al (1999) and Trenhaile (2000). The model
68 assumes equilibrium retreat such that as the coast evolves the cross-section morphology remains
69 steady while translating shoreward according to the prescribed retreat rate. The dynamic shore profile
70 evolution model was coupled with predictions of ^{10}Be production testing numerous exposure
71 conditions such as block removal process, beach cover, topographic and water shielding, tide effect
72 and relative sea level change (Hurst et al, 2017). The shape of the distribution of ^{10}Be across the
73 shore platform can potentially reveal whether cliff retreat rates are declining or accelerating through
74 time (Hurst et al, 2017). Very recently, ^{10}Be concentrations on shore platform in Yorkshire suggest
75 steady state retreat, whilst maintaining a similar profile form, without direct relationship between
76 relative sea level over centennial to millennial timescales and the erosion response of the coast (Swirad
77 et al, 2020)

78 We have chosen to explore in detail four areas of the Normandy chalk coastline, including onshore
79 and offshore topo-bathymetry, in order to assess the shore platform geomorphological variations. New
80 high-resolution bathymetry surveys were reached near the coast using the shallow water R/V *Haliotis*
81 with interferometric sonar mapping system (Geoswath).

82 Submarine coastal data shows the occurrence of a near-continuous and unrevealed submarine rocky
83 platform with one or more submarine steps. One of these steps is parallel-oriented to the current
84 coastline with a near-constant distance to the current cliff platform junction (CPJ) location. The
85 geological analysis of the platform combined with cosmogenic nuclide (^{10}Be) concentrations were

86 used to discuss the origin of the submarine steps and the modalities of long-term cliff retreat on the
87 southern English Channel coast.

88

89 **2. Materials and method**

90 **2.1. Normandy coastal and intertidal topography**

91 The onshore part of the Normandy coastline was entirely and continuously mapped using aerial
92 surveys provided by the French National Institute of Geography (IGN). Data are derived from the
93 merging of several DEM data sets obtained using aerial LiDAR(RGEAlt[®]) and aerial photographs
94 covering land, cliffs, and the upper portion of the shore platform, as a function of the tide level during
95 surveys. The RGEAlt[®] DEM based on LiDAR data covers only a 2 km wide coastal fringe with a
96 resolution of 1 m (horizontal) and a vertical accuracy of 0.2 m for land surfaces to 0.5 m for
97 underwater surfaces.

98 **2.2. Subtidal bathymetry**

99 Swath shallow-water bathymetric data were obtained using the R/V *Haliotis* (IFREMER) during four
100 cruises in order to map the submarine portion of the study sections. CROCOLIT-01 (Duperret, 2013a)
101 covers the area offshore Ault, CROCOLIT-03 (Duperret, 2013b) covers a small area offshore Mesnil-
102 Val, SPLASHALIOT-02 (Maillet, 2014) covers the area between Criel-sur-Mer and Mesnil-Val, and
103 CROCO-CAUX (Duperret, 2017) covers the areas offshore the Cap d'Antifer cape up to Etretat and
104 from Fécamp to Eletot (Fig. 1). In total, 309 bathymetric swath profiles with a total length of 680 km
105 were created and cover an area of 31 km². All the raw data were obtained with the R/V *Haliotis*
106 interferometric sonar (GeoSwath) that allows the acquisition of bathymetric data from shallow water
107 depths ranging from 5 m to 30 m. Moreover, a chirp dataset was also obtained using a sub-bottom
108 profiler (1.8 to 5.3 kHz) and 290 very high-resolution seismic profiles were treated with MATLAB and
109 assessed with the KINGDOM suite software. The vessel navigation was performed by RTK GPS
110 (Real Time Kinematic Global Positioning System) using a reference station that provided a positioning
111 accuracy of a few centimeters, located at a distance of less than 10 km away from the coast. Raw
112 bathymetric data were later treated using CARAIBES software (©IFREMER) to (i) integrate the daily
113 tidal variations during the acquisition, (ii) to clean the multibeam bathymetric profiles from outliers that
114 can be attributed to boat turbulences and sea-surface agitation, and (iii) to create the offshore DEM by

115 merging bathymetric profiles. The resulting offshore DEM has a horizontal resolution of 1 m and a
116 vertical accuracy of 0.1 m.

117 The offshore bathymetric DEM and the onshore topographic DEM were finally merged in a single
118 land/sea Digital Elevation Model and standardized to the national terrestrial reference origin (NGF),
119 based on the Lambert93 French national projection system (ellipsoidal datum, GRS80).

120 Offshore lithological maps were then created, based on field work on coastal cliffs and shore
121 platforms, dedicated to geological and lithological observations using key-marker stratigraphic
122 correlations and on the geomorphological analysis of the bathymetry correlated with available
123 borehole data from the coastal domain (BRGM database), indicating the depth of lithological
124 formations and transitions.

125 **2.3. Cosmogenic dating background**

126 ^{10}Be cosmogenic dating is based on the ^{10}Be concentration produced by the interaction with the
127 quartz-rich Earth surface. This *in-situ* concentration provides the exposure age to cosmic rays at the
128 surface (Gosse & Phillips, 2001). In principle, any stable geological surface continuously exposed to
129 cosmic rays will accumulate cosmogenic nuclides in surficial rocks over time (Lal, 1991; Dunai, 2010).
130 ^{10}Be production depends on the flux of cosmic rays, on the intensity of the terrestrial magnetic field,
131 and on the absorption properties of the materials under study, controlled by the latitude and elevation
132 of each sample.

133 The production of ^{10}Be *in-situ* close to the surface declines exponentially with depth (self-shielding) as
134 the cosmic ray flux taper off (Gosse & Phillips, 2001). We used ^{10}Be dating to measure cosmic ray
135 exposure by quantifying the accumulation of nuclides. The ^{10}Be concentration determined in one
136 sample depends on several factors (Regard et al., 2012), such as cosmic ray exposition duration,
137 exposition depth, and ray shielding, such as vegetation, water or sediment cover.

138 **3. Study sites and geological framework**

139 Though the geology of the coastal chalk cliffs of Normandy has been fully explored by many authors
140 (Mortimore & Pomerol, 1987, 1991, 1997; Costa, 1997; Mortimore, 2001, 2011; Costa et al., 2004,
141 2006; Duperret et al., 2002, 2004, 2005; Lageat et al., 2006; Senfaute et al., 2009; Letortu et al., 2015,
142 2019), the subtidal shore platform morphology remain largely unknown, except through large-scale

143 bathymetry surveys (Augris et al., 1993; Augris et al., 2004) and local studies of intertidal shore
144 platforms at Eletot and Les Grandes Dalles (Costa et al., 2006; Foote et al., 2006; Hénaff et al., 2006;
145 Moses et al., 2006), and Mesnil-Val (Regard et al., 2012; Dewez et al., 2015; Duperret et al., 2016).

146 The Normandy coastal chalk cliffs are cut by two major northwest trending faults, the Fécamp-
147 Lillebonne fault and the Bray fault. These major faults delineate three tectonic blocks (Fig. 1): from
148 west to east, i) the Bec de Caux block with NNE dipping Cenomanian to Coniacian chalk, ii) the Caux
149 block with the youngest chalk outcrops (Turonian to Campanian), and iii) the Picardy block made of
150 Cenomanian to Turonian chalk folded along the Londinière and Bresle anticlines, and faulted by the
151 Eu fault along the Bresle valley (Hauchard & Laignel, 2008; Duperret et al., 2012) (Fig. 1).

152 We chose to carry out an in-depth of four coastal sections with dissimilar Chalk Formations and
153 consequently various physical properties. Each study site is located in a tectonic block along the
154 Normandy coast, where various Chalk Formations outcrop: (1) in the Bec de Caux block section (Cap
155 d'Antifer cape to Etretat), (2) in the Caux block section (from Fécamp to Senneville-sur-Fécamp), and
156 (3) in the Picardy block section (from Penly to the town of Mesnil-Val, and a site offshore the town of
157 Ault) (Fig. 1).

158 **3.1. Cap d'Antifer cape and the Etretat coastal section**

159 Along this section, the coastline trend varies on each side of the Cap d'Antifer cape, with a north-
160 south orientation to the south (from Saint-Jouin-Bruneval to the Cap d'Antifer cape) and a NE-SW
161 orientation to the north (from the Cap d'Antifer cape to Etretat) (Fig. 1). The coastline is made of
162 vertical chalk cliffs with heights varying from 90 m (Le Fourquet) to 70 m (Etretat).

163 From the Cap d'Antifer cape to Etretat, the NNE dipping of chalk units allows the exposure of a large
164 diversity of Chalk Formations on the cliff section, including the Craie de Rouen Formation
165 (Cenomanian), the Holywell Nodular Chalk Formation, the New Pit Chalk Formation (Turonian), and
166 the Lewes Nodular Chalk Formation (Turonian-Coniacian) (Fig. 2). Cenomanian chalk units are
167 exposed at the base of the cliff between the Le Fourquet and Antifer valley, and are characterized by
168 coarse and nodular chalk with banks of harder beds (hardgrounds) (Duperret et al., 2012). The Upper
169 Cenomanian Craie de Rouen is a white chalk with numerous flint bands and contains two main
170 hardgrounds (hardgrounds Rouen 1 and 2) made of glauconitic and phosphate-cemented levels

171 (Juignet, 1974; Lasseur, 2007). Turonian chalk appears at the base of the cliff on the northwest side of
172 the Antifer valley. It is composed of the Holywell Nodular Chalk Formation with very few flints and of
173 local Antifer hardgrounds, as well as by the massively bedded chalk of the New Pit Formation that
174 contains several marl seams and hardground layers, called the Three Tilleul hardgrounds (Mortimore
175 & Pomerol, 1991). The Lewes Nodular Chalk Formation outcrops at the base of the Etretat cliff as a
176 coarse chalk with many nodular chalk beds and flints, dated from the Upper Turonian to Lower
177 Coniacian (Mortimore et al., 2001). Locally, the Lewes Nodular Chalk is called the Etretat complex,
178 and is related to a major Cretaceous tectonic phase (Mortimore & Pomerol, 1987) and shows
179 numerous hardgrounds and flint levels (Fig. 2).

180 **3.2. Fécamp to Eletot coastal section**

181 The coastline trend varies on each side of the Cap Fagnet cape (Fécamp), with a N30° orientation on
182 its west side (from south Fécamp to the Cap Fagnet cape) and a N60° orientation on its east side
183 (from Cap Fagnet cape to Eletot) (Fig. 1).

184 Chalk cliffs in the Fécamp area have been largely surveyed due to the occurrence of the Fecamp-
185 Lillebonne normal fault (Mortimore & Pomerol, 1987; Lasseur et al., 2009; Duperret et al., 2012),
186 which exposes the complete Upper Cretaceous stratigraphic succession from the Craie de Rouen
187 (Cenomanian) to the Seaford Chalk Formation (Coniacian) (Fig. 2), up to the top of the 105 m high
188 Cap Fagnet cape cliff. At Senneville-sur-Fécamp, the cliff base is made of the New Pit Chalk
189 Formation with specific Tilleul hardgrounds. At Eletot, the cliff base exposes a specific unit of the
190 Lewes Nodular Chalk Formation dated from Late Turonian and called the “Chalk Rock” unit
191 (Mortimore, 2001). On this coastal section, the Seaford Chalk Formation appears at the top of the cliff
192 as a homogeneous soft chalk with regular flint levels dating from the Middle Coniacian to the Middle
193 Santonian (Fig. 1).

194 **3.3. Penly / Biville-sur-Mer to Mesnil-Val coastal section**

195 The coastline trend is N60°E from Biville-sur-Mer to the westside of the Yères valley and becomes
196 N50°E east of the Yères valley, from Criel-sur-Mer to Mesnil-Val (Fig. 1). Both the cliff and shore
197 platforms of the Mesnil-Val site have already been surveyed (Senfaute et al., 2009, Regard et al.,

198 2012; Dewez et al., 2013, 2015; Duperret et al., 2016) by the European and French research projects
199 dedicated to this site.

200 The cliff section from Biville-sur-Mer to Mesnil-Val is made of the Holywell Nodular Chalk Formation
201 (Turonian) with the occurrence of New Pit Marls at the base of the cliff located on the south side of
202 Criel-sur-Mer, and the Lewes Nodular Chalk Formation (Late Turonian) that outcrops at the base of
203 the Mesnil-Val's cliff (Fig. 2). Criel-sur-Mer is crossed by the N-S Yères valley carved along the N-S
204 axis of the Criel-sur-Mer syncline along the south side of the Bresle anticline axis at Le Tréport (Fig.
205 1). The same chalk unit formations thus appear on each side of the Yères valley at Criel-sur-Mer.

206 **3.4. Ault coastal section**

207 The cliff section in the Ault area is only composed of the Lewes Nodular Chalk Formation (Lower
208 Coniacian) and the overlying Seaford Chalk Formation (Coniacian), with a continuous NE dip (Fig. 1).
209 The Ault cliff height decreases progressively from 60 m in the southwest to sea-level in the northeast,
210 and so on until the end of the chalk cliffs coastline.

211

212 **4. Hydrodynamic and climatic conditions**

213 Marine and climate processes are key factors of coastal cliff evolution. For example, waves may break
214 directly on the cliff base during high spring tides and allow the debris stuck at its foot to be removed.
215 This leads to the continuous instability of the cliff face (Trenhaile, 1987, 2000; Sunamura, 1977, 1992;
216 Peregrine & Kalliadasis, 1996; Brossard & Duperret, 2004; Costa et al., 2006; Lim et al., 2011; Young
217 et al., 2011). Furthermore, continental processes such as rainfall also contribute to cliff collapses from
218 chemical and physical alteration such as chalk dissolution (Rodet, 1983; Duperret et al., 2002) and an
219 increase of water pore pressure (Duperret et al., 2002; Costa et al., 2004).

220 During astronomical spring tides, the Normandy chalk coastline has a tidal range of 8.12 m at Le
221 Fourquet and 10.21 m at Le Tréport (SHOM, 2017). Long period waves and waves with significant
222 amplitudes were recently recorded offshore Penly at the real-time directional Penly buoy (anchorage
223 at 11 m depth) from November 2017 to January 2019 (CEREMA, 2019). The rose diagram illustrates a
224 main NW swell (from N280°E to N300°E) with a mean significant wave height of 1 m and a period of

225 4.8s (Fig. 1). Only 10% of the recorded swell data shows a period that is longer than 7s and a height
226 that is higher than 1.5 m. Nevertheless, the Penly buoy has recorded extreme significant wave heights
227 of 4.5 m, with a period of 10.8 s, for example during the Eleanor storm (3rd and 4rd January 2018).
228 During the storms (in December 2017, 2019, January 2018, February 2020), a maximum wave height
229 of 7-8m have been recorded. Additionally, some 0.5-1 m high northern waves may also occur during
230 winter.

231 The Normandy region is subject to an oceanic climate with a mean annual minimal temperature of
232 8.9°C and a mean annual maximal temperature of 13.9°C (established between 1981-2010 at Cap de
233 la Hève station, Le Havre, Météo-France). Rainfall are rather well spread out throughout the year (\approx
234 800 mm) with a generally wetter winter period (averages of 52 mm in July and 88 mm in December).

235

236 **5. Inter- and subtidal shore platforms**

237 The shore platform is defined as a gentle rock slope extending between the high astronomical tide
238 (HAT) and the low astronomical tide (LAT) (during spring tides). As defined in the coastal domain of
239 SW Brittany, the offshore submarine extension of the shore platform is called the rock platform, due to
240 its pluri-kilometric cross-shore extension (Raimbault et al., 2018b). Shore (intertidal) and rock
241 (subtidal) platforms appear on all Normandy coastal land-sea DEMs, but only four study sections have
242 been assessed and compared using detailed bathymetry maps and chalk lithology datasets in order to
243 explore the complete inter- and subtidal platform system. Study sections cover 9.5 km² between the
244 Cap d'Antifer cape and Etretat, 6.5 km² between Fécamp and Eletot, 10.1 km² between Biville sur Mer
245 and Mesnil-Val, and 1.8 km² in Ault (Fig. 1). The new detailed bathymetric maps reveal continuous
246 geomorphological steps. These are studied in order to find their origin.

247 **5.1. Cap d'Antifer cape to the Etretat section**

248 **5.1.1. Shore and submarine morphology**

249 The land-sea DEM cover 9.5 km² and the bathymetric dataset extends from 1 km offshore Le
250 Fourquet to 2 km offshore Etretat, and up to 20 m in depth (NGF) (Fig. 3a). Bathymetry reveals a 100
251 to 200 m wide shore platform with a lower limit (LAT level) roughly parallel to the coastline, though

252 some bathymetric data are lacking in this area due to the imperfect coverage of the aerial and
253 bathymetric surveys (Fig. 3a). The land-sea DEM focused on the Fourquet headland shows the shore
254 platform extending from the shingle beach bar (5 m NGF) to LAT level (Fig. 3b). Shingle cover is
255 confined to the uppermost part of the shore platform near the CPJ, roughly extending from 0 to 5 m
256 (NGF). Some large chalk debris from cliff collapses remain on the beach near the cliff. At about -2 m
257 (NGF) we observe a change in the surface texture of the shore platform, from a smooth surface to
258 runnels. The intertidal smooth surface results from the vertical accuracy difference between the aerial
259 LiDAR dataset, the RGEAlt DEM on shore (0.5 m), and the submarine GeoSwath dataset (0.1 m).

260 One step (S_0) delineates the Fourquet headland base and appears again at the Manneporte arch base
261 to extend offshore Etretat (Fig. 3b & Fig. 3c). S_0 begins on the shore platform and extends underwater
262 in the subtidal area. The S_1 step is a limit between the runnelled subtidal platform and underlying non-
263 runnelled subtidal platform (Fig. 3c), while the S_2 step represents the boundary of the lowest flat and
264 smooth surface (Fig. 3c).

265 The rocky surface extends in the submarine domain and consists of a rock platform with progressive
266 width variation, ranging from 310 m at Le Fourquet to 1200 m offshore Le Tilleul (Fig. 3). We marked
267 the inland geomorphological limit of the platform at the Cliff-Platform Junction (CPJ, Wright, 1970),
268 located onshore at 0.5 m (NGF), and the offshore limit at the top of the step (called S_2) located at a
269 depth of -17 m (NGF) (Fig. 3). The 2 m high S_2 step marks the subtidal platform edge that represents
270 the submarine limit between the rock platform and a 0.5 to 1 m thick sediment cover made of
271 quaternary gravels and sand, also previously observed (Larsonneur et al., 1979; Augris et al., 2004)
272 (Fig. 3c). South of Cap d'Antifer cape, the S_2 step is roughly parallel to the intertidal shore platform
273 and the present-day coastline, but the S_2 trend gradually evolves northward to reach a north-south
274 trend offshore le Tilleul, whereas the coastline and the intertidal platform are SW-NE oriented (Fig.
275 3a). S_2 is not observed between Le Tilleul and Etretat, where recent sediments, locally 1 to 3 m thick,
276 cover the distal part of the subtidal platform (Augris et al., 2004) (Fig. 3c). The rock platform is split
277 into two geomorphological units limited by a step (S_1) that could be considered as an edge (Fig. 3).
278 We propose to name the lower part of the subtidal platform located below S_1 the outer platform, and its
279 upper part, located above S_1 , the inner platform (including subtidal and intertidal shore platforms) (Fig.
280 3c). The outer platform is a surface with low rugosity and slope gradient lower than 1° , extending from

281 S₂ to the base of S₁ around -17 m to -13 m (NGF) (Fig. 3c & Fig. 4b). Its width reaches 900 m offshore
282 Le Tilleul and is gradually covered by sediments eastward (Fig. 3c).

283 The inner platform extends from S₁ (-10 m NGF) up to the CPJ (0 to 1 m NGF), with a width varying
284 from 280 m (La Courtine) to 400 m (Porte d'Aval) (Fig. 3a). The inner platform is steeper than the
285 outer platform (1.5° to 1.9°) and entirely bare (Fig. 3c). Furthermore, the S₁ runs nearly parallel to the
286 coastline, except offshore the Etretat valley outlet (Fig. 3a).

287 Finally, the shore platform S₀ steps can only be found near Le Fourquet and Etretat. They correspond
288 to intertidal steps locally developed around the Fourquet headland and linked to the low-tide sea-level
289 with a hardground level in the Craie de Rouen Chalk Formation (Fig. 4). In Etretat, S₀ is a 3 m high
290 step located on the rock platform under the LAT level (Fig. 3c). At this location, the S₀ step
291 corresponds to the contact between the Lewes Nodular Chalk and New Pit Chalk Formations, as
292 revealed by the stratigraphic succession observed at the cliff face headland.

293 **5.1.2. Submarine and shore geology**

294 A borehole BRGM-1 (BRGM database) drilled in the Antifer valley at Le Tilleul (BRGM, 1970)
295 illustrates the following lithological succession: (i) the Craie de Rouen Formation from 0 to -12 m
296 (NGF), (ii) the sandy Glauconitic Chalk Formation relating to the Cenomanian down to about -16 m
297 (NGF), and (iii) the Albian clayey limestones below, also called Gaize (Juignet, 1974). A second
298 borehole BRGM-2 (BRGM database) located in the Etretat valley revealed evidence of Lower
299 Coniacian chalk from -1.2 m to -9.1 m (NGF) and Upper Turonian chalk down to -16.2 m (NGF)
300 (BRGM, 1963). Along the section from Le Tilleul to Etretat, the overall regional NE dip of chalk strata
301 (Mortimore, 2001, 2011; Duperret et al., 2012) is interrupted by a gentle syncline between Fourquet
302 Point and the La Courtine arch, followed by an anticline up to the Valaine location (Fig. 4a).
303 Nevertheless, the regional structure allows us to draw a geological map for the inner platform, as a
304 function of geomorphological variations, apparent dips of structures, and BRGM boreholes (Fig. 4a).
305 From southwest to northeast, the inner platform is shaped in the Craie de Rouen Formation offshore
306 the Cap d'Antifer cape, Le Fourquet, Le Tilleul including the Courtine point, and then changes to the
307 Holywell Nodular Chalk Formation from the La Courtine arch to the Manneporte arch, the New Pit
308 Chalk Formation between the Manneporte arch and the Porte d'Aval arch, and then finally the Lewes
309 Nodular Chalk Formation offshore the Etretat valley (Fig. 4a). The locations of the local arches such

310 as the Porte d'Aval, the Manneporte, and the Courtine arches are associated with hard chalk
311 formations, corresponding to the New Pit, the Holywell Nodular, and the Craie de Rouen Chalk
312 Formations, respectively (Fig. 4a). The large-scale Antifer cape, where the current coastline is
313 changing trends, is cut within the Craie de Rouen Formation. On this section, the edge of the inner
314 platform (S_1) is roughly and continuously oriented parallel to the current coastline. The outer platform
315 limited by the S_2 edge extends mainly between Cap d'Antifer cape and Le Tilleul valley. The outer
316 platform is partially made of the Craie de Rouen Formation in its upper part and of the Glauconitic
317 Chalk Formation from -12 m to -16 m (NGF), which is easily recognisable given the apparent SW
318 dipping of indurated chalk strata with glauconite (Fig. 4a & Fig. 4b). The inner platform edge, S_1 ,
319 crosses three various chalk formations, starting from the Glauconitic Chalk Formation, the Craie de
320 Rouen Formation, and the Holywell Chalk Formation (Fig. 4a). Therefore, S_1 step is not related to a
321 lithological change, but to an erosive process of the rock platform. However, S_2 , located -17 m
322 offshore Le Tilleul, appears to follow geological strata (Fig. 3c) and corresponds to the contact
323 between the Glauconitic Chalk Formation and the underlying Albian clayey limestones (Gaize
324 Formation) as observed from lithological successions reported from the borehole BRGM-1.

325 **5.2. Fécamp to Eletot section**

326 **5.2.1. Shore and submarine morphology**

327 Along the coastal section from Fécamp to Eletot bathymetry data extends up to 1 km offshore to a
328 depth of 18 m (NGF) (Fig. 5a). The shore platform is a relatively flat (1° slope gradient) and narrow
329 (200 to 250 m wide) surface with a low rugosity, limited offshore by the LAT level position, sub-parallel
330 to the coastline (Fig. 5). A few meters below the LAT level, 2 m high steps (S_0) appear locally, among
331 some other steps, especially around the Cap Fagnet cape (Fig. 5b). Herein, S_0 is a hardground level
332 (more indurated than the surrounding chalk) in the Craie de Rouen Formation as observed in the field
333 on the shore platform at the Cap Fagnet cape (Fig. 5b) and in Senneville-sur-Fécamp (Fig. 5c).

334 Along this coastal section, the intertidal shore platform is a smooth surface with some blocks, whereas
335 the subtidal rock platform shows a lot of runnels with a similar NW-SE trend, only developing along the
336 inner platform (CPJ to S_1) (Fig. 5c). S_1 may be represented locally by a vertical step similar to offshore
337 Eletot where the step is progressively covered eastward with sediments, otherwise S_1 may present a
338 slope similar to offshore Senneville-sur-Fécamp (Fig. 5c). Like in the previous coastal section, S_1 is

339 located at around -10 (NGF) but herein without outer platform development. S₁ represents the edge of
340 the inner platform and marks the contact with the offshore sediment cover (Fig. 5c). S₁ is ongoing and
341 almost near parallel-oriented to the coastline except offshore the Valmont valley outlet where the
342 paleo-river drainage incised the valley to below S₁.(Fig. 5a). The subtidal rock surface gradually
343 widens from 370 m at in the Cap Fagnet cape to 590 m in Eletot with a 1.8° to 1.2° slope gradient (Fig.
344 5a & Fig. 6b).

345 Offshore Senneville-sur-Fécamp, the S₁ trend is roughly parallel to the coastline, except where S₁ is
346 interrupted by a scar with paleo-scrée deposits, made of big boulders partially covered with sediments
347 (Fig. 5a). The estimated length of the chalk debris deposited appears to reach 150 m out to sea with a
348 surface of 29 000 m² (Fig. 5a). Such lengths of chalk debris deposits are equivalent to those observed
349 from modern collapses on the chalk cliffs of Normandy (Duperret et al., 2002, 2004). In this case, this
350 offshore debris can be the result of a cliff collapse that occurred when the cliff and the paleo-coastline
351 was right at the S₁ location.

352 Along this coastal section of Normandy, the inner rock platform morphology appears as a succession
353 of 3-4 superposed and short (50 m mean width) rock surfaces, all limited by small edges of various
354 trends. Such a configuration may be linked to the occurrence of numerous superposed hardground
355 levels in the Craie de Rouen Formation, favouring guidance for step back-wearing (Fig. 6b)
356 (Dornbusch & Robinson, 2011; Regard et al., 2013; Dewez et al., 2015).

357 **5.2.2. Shore and submarine geology**

358 The borehole BRGM-3 (BRGM database) drilled in the Fécamp harbour shows an Upper Cenomanian
359 Glauconitic Chalk Formation, from -10 m (NGF) to the core bottom (-17 m NGF) (BRGM, 1969), and
360 field observations of the shore platform below the Cap Fagnet cape show the overlying Craie de
361 Rouen Formation. On the western side of the Valmont valley, field observations show the Lewes
362 Nodular Chalk Formation from Coniacian to Turonian (Fig. 6a). The stratigraphic offset of the chalk
363 outcrops of the cliffs and the shore platforms on each part of the Valmont valley (Fécamp) is a strong
364 argument to the location of the Fécamp-Lillebonne fault in this area (Mortimore & Pomerol, 1987;
365 Lasseur et al., 2009; Mortimore, 2011). There is no offshore morphological track of such a fault on the
366 rock platform, especially on the western limit of the Fécamp rock platform, due to the Valmont valley
367 outlet that is infilled with sediment and cuts the rocky platform offshore Fécamp (Fig. 6a).

368 Nevertheless, the stratigraphic offset observed between the Lewes Nodular Chalk Formation
369 (Turonian-Coniacian) and the Glauconitic Chalk Formation (Cenomanian) is relative to the Fécamp-
370 Lillebonne fault occurrence with a local N170E trend in the offshore prolongation of the south side of
371 the Valmont valley (Fig. 6a). At the Cap Fagnet cape, the NE strata dip brings the coarse Craie de
372 Rouen Formation to the rock platform surface and cliff toe level (Fig. 6a & Fig. 6b). The overlying
373 Holywell Nodular Formation appears at the beach level east of the northern point of the Cap Fagnet
374 cape and shapes the rock platform up to Senneville-sur-Fécamp (Fig. 6a). In Senneville-sur-Fécamp,
375 the contact between the Holywell Nodular and New Pit Chalk Formations is underlined by step S_0 ,
376 crossing the shore and the rock platforms until S_1 and is easily recognizable in the field and on the
377 bathymetry (Fig. 6a).

378 **5.3. Biville-sur-Mer to Mesnil-Val section**

379 **5.3.1. Shore and submarine morphology**

380 The bathymetric dataset (CROCOLIT-2013 and SPLASHALIOT-2014 cruises) extends to 1.5 km
381 offshore down to -20 m (NGF) from Biville-sur-Mer to Mesnil-Val (Fig. 7a).

382 In Criel-sur-Mer, the shore platform is narrow (300 m wide to the LAT limit) and smooth with a slope
383 gradient of 1.4° (Fig. 7b), whereas northeast of Mesnil-Val, the shore platform is wide (435 m), flatter
384 (0.8°) and rougher, with many steps and runnels. The shore platform of Mesnil-Val is locally known as
385 the Muron Rocks (Duperret et al., 2016) where ^{10}Be cosmogenic dating has been explored by Regard
386 et al. (2012) in order to estimate the long-term cliff retreat rate.

387 Like the previous sections, the rock platform from Biville-sur-Mer to Mesnil-Val extends below the LAT
388 level and shapes the inner platform, limited by edge S_1 (Fig. 7b & Fig.7c), is ongoing and oriented
389 parallel to the shore and the coastline, except on the Muron Rocks where the inner platform is larger
390 (800 m) (Fig. 7a). The inner platform is herein a bare gentle slope surface from 0.7° in Mesnil-Val to
391 1.2° from Criel-sur-Mer to Biville-sur-Mer with a corresponding width of 800 m to 500 m. The inner
392 platform edge (S_1) is a sloping edge located between -9 and -10 m (NGF) (Fig. 8b). No outer platform
393 is perceptible beyond S_1 (Fig. 7c). S_1 represents the boundary between the bare rock platform and the
394 underlying sediment cover (Fig. 7b & Fig. 7c). Finally, some other higher steps (S_0) are located on the
395 rock platform but are not continuous and parallel to the coastline. Like the other coastal sections, they

396 mainly correspond to hardground levels of the chalk where the erosion process has been amplified, as
397 already suggested here (Dewez et al., 2015; Duperret et al., 2016) (Fig. 8b).

398 **5.3.2. Submarine and shore geology**

399 The borehole BRGM-4 (BRGM database) drilled in the Yères valley axis shows at -0.6 m (NGF)
400 (BRGM, 1956) the Coniacian to Turonian limit represented by the Lewes Marl key-marker within the
401 Lewes Nodular Chalk Formation (Fig. 2). In Criel-sur-Mer, the coastline is cut by a N-S syncline
402 favouring the Lewes Nodular Chalk Formation, outcropping with older chalk units underneath (New Pit
403 Chalk Formation) on each side of the syncline, both offshore Mesnil-Val and Biville-sur-Mer (Fig. 8a &
404 Fig. 8b). The Yères valley is developed along the axis of the syncline and the Muron Rocks may be
405 considered to be the eastern border of the syncline, surfacing during LAT periods (Fig. 8a). As also
406 observed offshore Etretat, the S₁ step is not present offshore the outlet of the Valmont valley.

407 Furthermore, at 3.8 km westward from the studied coastal section (offshore Penly) (Fig. 9), the chalk
408 rock basement was estimated to be around -15 m (NGF), below a 1 m to 5 m thick Pleistocene
409 sedimentary cover on two offshore boreholes, BRGM-5 and BRGM-6 (BRGM database) (BRGM,
410 1993) (Fig. 9). The chalk basement has been also reported on the Chirp profile Splash33 under the
411 Pleistocene sand cover (Fig. 9). The BRGM-6 borehole is located immediately below the S₁ edge that
412 bounds the inner and outer rock platform (Fig.9).

413 **5.4. Ault section**

414 **5.4.1. Submarine morphology**

415 The bathymetry dataset extends until 800 m offshore Ault down to a depth of 12 m (NGF) (Fig. 10a). A
416 300 m wide, smooth and flat shore platform (1°) is observed along the coastal section (Fig. 10b). The
417 Ault area is the only coastal section where the shore platform is partially covered with sediments that
418 are widely present in this area neighbouring the Somme estuary. Sand isopachs have been generated
419 from Chirp profile interpretations (CROCOLIT_01 cruise). A 1 to 14 m sediment cover is visible and
420 increases to the northeast (Fig. 10d). A map of the chalk basement elevation has been made and the
421 top of the chalk deepens northeastward down to -20 m (NGF) (Fig. 10c). Figure 10c represents the
422 portion of the submarine rock surface without sediment coverage; it is a gently sloped surface (0.7°)
423 ending with a sloping edge (S₁) where its top is located at about -9 m (NGF) (Fig. 10c). As defined in

424 the previous coastal sections, this surface corresponds to the inner platform ended by edge S_1 . The
425 inner platform width ranges from 450 m in the north of Ault to more than 800 m southward, where S_1 is
426 beyond the bathymetric data cover (Fig. 10c). The inner platform width decreases progressively to the
427 northeast, corresponding to the similar aerial disappearance of cliffs at Ault, ending the Normandy
428 chalk cliffs coastline.

429 **5.4.2. Submarine and shore geology**

430 The BRGM-7 borehole (BRGM database) made in the north of Ault reveals the Upper Turonian
431 Formation of the Lewes Nodular Chalk Formation to the core bottom at -6 m (NGF) (BRGM, 1973). As
432 the edge of the inner platform (S_1) is located at -9 m (NGF), only 3 m deeper than the BRGM-7
433 borehole bottom, the entire inner platform is made of Lewes Nodular Chalk Formation (Fig. 10d).

434

435 **6. Normandy marine platform model**

436 **6.1. A common structure**

437 The marine platform observed along the four distinct coastal sections display common characteristics
438 (Fig. 11). A gently dipping surface ($1\text{-}2^\circ$ dip) that starts at the CPJ located at 0 to 2.5 m (NGF) down to
439 a distal edge, the morphological edge (S_1), and sometimes extended to the lithological step S_2 as
440 observed at -17 m (NGF) along the Antifer to Etretat section. S_1 is observed on all coastal sections
441 and it can be either a vertical step or a slope gradient, and is linear and nearly parallel to the present-
442 day coastline. S_1 is continuous along the coastline, except offshore the outlets of large-scale valleys
443 crossing the coastline, such as offshore the Etretat valley, the Valmont valley at Fécamp, and the
444 Yères valley at Criel-sur-Mer. There, S_1 may have been eroded by river incision. The top of S_1 is
445 always located between -9 m and -10 m (NGF), despite the lithology and the structuration of the chalk.
446 It may split the rock platform in two parts, as observed locally at Antifer, with an upper platform from
447 the CPJ to the top of S_1 , named the inner platform, and a lower platform from S_1 to the top of S_2 ,
448 named the outer platform. The inner platform has a slope gradient varying from 0.8° to 2.1° , and
449 extends into the intertidal area (the shore platform) and the subtidal area. The outer platform is
450 partially covered by sediments, as evidenced by the seismic profile acquired near Penly (Fig. 9). The
451 outer platform of Antifer extends exclusively in the subtidal domain from the base of S_1 (~ -15 m) to the
452 top of S_2 , with a slope gradient varying from 0.3° to 1.2° (Fig. 11). The appearance of a rocky and bare

453 outer platform only located offshore the Cap d'Antifer cape may be explained by high marine
454 hydrodynamics in this area that inhibit sediment accumulation down to a minimal depth of -17m
455 (NGF). This is confirmed by a drastic change in coastal drift from this point of the coast, from
456 southwest to northeast. As observed in the field, such as on the shore platform of Mesnil-Val, the inner
457 rock platform shows numerous steps, called S_0 (Fig.11). Field work shows they correspond to small-
458 scale sedimentological facies variations of the chalk, such as hardground levels or the Chalk
459 Formation lithological limits described on the Mesnil-Val shore platform (Regard et al., 2012; Dewez et
460 al., 2015; Duperret et al., 2016). In Normandy, the inner platform is always made of bare chalky rocks
461 except in the Ault area, in the northernmost section, where sediments coming from the Somme
462 estuary are progressively covering the inner platform.

463 **6.2. Intertidal shore platform versus relative sea level (RSL)**

464 Previous studies focused on the retreat dynamics of coastal cliffs and platforms have shown that rock
465 strength and, more generally, the physical properties of the rocks, is one of the parameters in
466 competition with aerial and marine erosional processes like dissolution, wave impact, and freeze-thaw
467 cycles to explain the various degrees of cliff erosion (Trenhaile, 1980, 1987; Sunamura, 1992;
468 Duperret et al., 2002; Hénaff et al., 2002; Costa et al., 2004; Matsuoka & Murton, 2008; Young et al.,
469 2011; Naylor & Stephenson, 2010; Prémaillon et al., 2018).

470 Some authors have demonstrated the impact of tidal range and wave exposure on the width and slope
471 of shore platforms. (Trenhaile, 1978, 1987, 2002; Sunamura, 1992; Kennedy & Dickson, 2006). In
472 Normandy, the spring tidal range is macrotidal. Astronomical tide rises progressively from Antifer (8.25
473 m), Fécamp (8.70 m), Le Tréport (10.05 m) to Ault (10.21 m) and wave exposition is roughly constant
474 along the coast. The intertidal shore widths range from 120 to 435 m and the marine (inner and outer)
475 platforms range from 280 to 810 m in width, with a mean 1.4° slope gradient. The shore platform width
476 increases progressively from Antifer/Etretat zone (120m-170m), Fécamp/Eletot zone (215m-370m),
477 Criel-sur-Mer/ Mesnil-Val zone (290m-435m) to Ault (300-375m). Shore platform mean slope gradients
478 is around 1.3° , with a maximal gradient at Antifer (2.1°) and a minimal gradient at Criel sur Mer (0.8°).
479 The width of contemporary intertidal zones tends to increase with tidal range, as well as slope gradient
480 tend to decrease. Such tendency is also confirmed using numeric models dedicated to RSL changes
481 on shore platform morphology. For example, slowly rising RSL in the Bristol Channel (about 1 mm yr^{-1}

482 in the last 5000 years) created wide, gently sloping surfaces (gradients of 1° to 2° from the Mean Low
483 Water Spring to a depth of -5m) extending from the upper intertidal zone into the subtidal zone
484 (Trenhaile, 2010). Modelling studies suggest also that shore platform gradients may decline through
485 time and platform width tend to increase in macro- and mesotidal runs with fast erosion (Trenhaile,
486 2000, 2020 ; Walkden and Hall, 2005).

487 **6.3. Inner platform morphology versus chalk formations properties**

488 In Normandy, studies based on coastal chalk cliff retreat rates have shown a direct relationship
489 between the stratigraphy of chalk cliff outcrops and contemporary erosion rates (Costa, 1997; Costa et
490 al., 2004; Letortu et al., 2014, 2019). It is not the case for the chalk cliffs of Sussex, where some of the
491 spatial variability in cliff retreat rates can be explained by local variations in lithology (Dornbusch et al,
492 2008).

493 Rock strength may also explain the shape and width of the platform (Trenhaile, 1987, 1999;
494 Stephenson & Kirk, 2000; Davies et al., 2006; Dickson, 2006). A series of 35 topo-bathymetric profiles
495 drawn on the rock platform of each study site is superposed from the common point chosen at the S₁
496 edge location (Fig. 12). Inner platform profiles are represented according to their Chalk Formation type
497 and location. The inner platform widths in Chalk Formations appear to vary from about 250 m to 800
498 m. The wider is the inner platform, the lower is its slope gradient and the higher its CPJ elevation (Fig.
499 12). Regardless of the Chalk Formation type, there is an apparent logarithmic relationship between the
500 inner platform width and its slope (Fig. 13). The shortest inner platforms with high slopes are
501 associated with the Craie de Rouen Chalk Formation and located at the Cap d'Antifer cape and the
502 Cap Fagnet cape. The Holywell Nodular and New Pit Chalk Formations give larger inner platforms
503 while the Lewes Nodular Chalk Formation shows the largest and flattest inner platforms, such as
504 observed at Etretat, Eletot, Criel-sur-Mer, Mesnil-Val, and Ault (Fig. 12).

505 The petrophysical and geomechanical properties (porosity, permeability, Uniaxial Compressive
506 Strength (UCS), and diagenesis index (DI)) indicative of the cementation of each chalk formation of
507 the Paris basin have been extensively studied and measured in the laboratory (Table 1) (Mortimore &
508 Duperret, 2004; Duperret et al., 2005; Faÿ-Gomord et al., 2016). Recently, Faÿ-Gomord et al. (2016)
509 demonstrated the impact of chalk microtexture on its physical and mechanical properties and defined
510 six types of chalk microtextures (MT1 to MT6) describing the texture of the chalk matrix observed

511 using a scanning electron microscope. The widest and flattest inner platforms are shaped in the Chalk
512 Formations that belong to the poorly to uncemented pure white chalk type (MT1) with a low UCS, a
513 low diagenesis index, and high permeability and porosity (Lewes Nodular Chalk and New Pit Chalk
514 Formations). The narrowest and steepest inner platforms are shaped in the Chalk Formations that
515 largely belong to the moderately-cemented pure white chalk type (MT2) with a high UCS and
516 diagenetic index and low permeability and porosity (Holywell Nodular Chalk and Craie de Rouen
517 Formations).

518 Even if the Craie de Rouen and Holywell Nodular Chalk Formations reveal the same microtexture type
519 (MT2), the inner platforms shaped in the Holywell Nodular Chalk Formation are mostly wider than
520 those shaped in the Craie de Rouen Formation. This may be explained by the difference in
521 permeability observed between these two chalk formations, where unlike the UCS, the permeability of
522 the Craie de Rouen Formation samples is mainly lower (mean: 0.29 mD) than the samples of the
523 Holywell Nodular Formation (mean: 0.36 mD) (Table 1). Similarly, both New Pit and Lewes Nodular
524 Chalk Formations belong to the MT1 type but inner platforms shaped in the Lewes Nodular Chalk
525 Formation are mainly wider. The difference in the inner platform width between the New Pit and Lewes
526 Nodular Chalk Formations may be explained by a lower permeability for the New Pit Chalk Formation
527 (mean: 2.4 mD) than for the Lewes Nodular Chalk Formation (mean: 10,32 mD) (Table 1).

528 The current width of the inner platform shows that the retreat of the cliff since it was located at the S₁
529 location is related to the lithological characteristics of chalk formations (Fig. 12). In fact, each Chalk
530 Formation presents various geotechnical properties closely linked to its type of cementation
531 (microtexture) and intrinsic permeability. Therefore, inner platforms shaped in the highly permeable
532 Lewes Nodular and New Pit Chalk Formations display the largest cliff retreats, 450 to 850 m and 475
533 to 600 m, respectively (Fig. 12 & Fig. 13). Whereas inner platforms shaped in the lowly permeable
534 Holywell Nodular Chalk and Craie de Rouen Formations demonstrate to the lowest cliff retreats with
535 325 to 440 m and 280 to 350 m, respectively (Fig. 12 & Fig. 13).

536 In Normandy, the higher the chalk rock permeability is, the wider and lower the slope gradient is for
537 the inner platform.

538

539 **7. Normandy rock platform evolution**

540 Numerical models of shore platform evolution suggest that, whereas contemporary shore platform
541 morphology is, in part, the product of tidal range, wave regime, rock resistance and other site-specific
542 factors, it also reflects the way in which RSL attained its present level during the recent past
543 (Trenhaile, 2010, Hurst et al, 2017). Holocene changes in RSL determined the amount of time that
544 marine processes have operated within the modern intertidal zone (Tenhaile, 2010). The style of
545 platform evolution is expected to be important for the distribution of ^{10}Be across the shore platform
546 (Regard et al, 2012, Hurst et al, 2016, 2017). Dynamic shore profile evolution models (e.g. Sunamura,
547 1992; Anderson et al, 1999; Trenhaile, 2000; Walkden and Hall, 2005; Matsumoto et al, 2016) predict
548 that coasts tend towards steady state, whereby rapid cliff retreat widens shore platforms and the
549 resultant increased wave energy dissipation reduces cliff retreat rates and increases erosion of the
550 shore platform (Hurst et al, 2017).

551 The ^{10}Be production on a shore platform formed during the Holocene is a progressive increase of ^{10}Be
552 concentration from the nearshore zone to offshore because the shore platform has been exposed for
553 longer. However, the rate of ^{10}Be production decreases offshore because cover by seawater
554 attenuates the cosmic ray flux; hence, the amount of cosmic radiation received by the platform
555 decreases with increased water depth. The combined result of these factors is a “humped” distribution
556 of ^{10}Be concentrations. The magnitude of the maximum concentration is predicted to be inversely
557 proportional to the rate of cliff retreat (Regard et al, 2012; Hurst et al, 2016, 2017).

558 **7.1. ^{10}Be concentration pattern**

559 In Mesnil-Val, six new samples (MEV1 to MEV6) were collected between 456 and 814 m from the cliff
560 in order to complement the eight samples (MV01 to MV08) from Regard et al. (2012) (Fig. 14 & Table
561 2). These new flint samples were collected and georeferenced by divers beyond the shore platform
562 limit (LAT), in the subtidal portion of the rock platform. In addition, nine new samples were collected
563 from the Senneville-sur-Fécamp shore platform (SEN1 to SEN9) (Fig. 14). They are only located in the
564 intertidal area close to the cliff and range from 125 m to 239 m from the cliff (Fig. 14 & Table 3). The
565 SEN1 to SEN3 samples were initially collected and analysed in 2007, followed by the SEN6 to SEN9
566 samples in 2015 (Fig. 15). All samples have been prepared following a standard procedure (e.g.

567 Regard et al., 2012).

568 In Mesnil-Val, despite the samples having been collected at a distance of 600 m away from the cliff
569 face, Regard et al (2012) did not find the expected signature of the glacial cliff position, characterized
570 in the model by a step toward higher concentrations offshore. The model fit led Regard et al (2012) to
571 the conclusion that cliff retreat rate integrated over 6000 years cannot be lower than 10 cm/yr. As
572 model evaluation is very sensitive to the assumed rate of recent sea level rise, a retreat rate of 11-13
573 cm/y over the last 3 ky was finally proposed (Regard et al, 2012).

574 The new sampling extends as far as 800 m away from the cliff face and shows a characteristic
575 “humped” shape (Fig. 14), as initially expected. Here, we observed a marked step in ^{10}Be
576 concentrations between MEV2 (2.5 kat/g), and MEV3 (17.9 kat/g) along the same transect (Fig. 14).
577 Most of the samples of the Muron rocks inner platform (MEV3, MEV4b, MEV1 and MEV6) show an
578 increased ^{10}Be concentration of ten to fourteen times higher than the MV01 to MV07 samples
579 collected on the shore platform. The closer the sample is to S_1 , the higher its ^{10}Be concentration is.
580 The MEV3 concentration correlates with the morphological S_1 step and corresponds (in position and
581 magnitude of the concentration step) to the last glacial cliff position expected by Regard et al. (2012).
582 The highest ^{10}Be concentration is for MEV6 (46.3 kat/g) localised nearby S_1 , and locally close to LAT
583 (Fig. 14). Such a high ^{10}Be concentration may result from a long long presence of the glacial cliff at
584 this location, amplified by a lack of shielding due to the absence of beach cover and glacial chalk cliff
585 slope degradation.

586 The Senneville-sur-Fécamp shore platform is short and roughly flat ($<1.3^\circ$) and all SEN samples are
587 collected in the 1 to 1.5m thick Hardground band, with flints called Tilleul's hardgrounds (HG1-2)
588 corresponding to the lithological transition between the Holywell Nodular and overlying Newpit Chalk
589 Formations (Mortimore et al., 2001) (Fig. 6). The HG1-2 band testifies to the hardness of this layer in
590 comparison to the underneath located chalk (Holywell Nodular Chalk Formation) that constitutes the
591 shore platform. At Senneville-sur-Fécamp, the samples that have been collected closest to the cliff
592 (SEN1 to SEN3) have ^{10}Be concentrations that are similar to most of the Mesnil-Val shore platform
593 samples (MV01 to MV08), with the exceptions of MEV4a/4b (Table 3). The distal shore platform
594 samples (SEN5 to SEN9) show a three to five fold enhanced ^{10}Be concentrations three to five times
595 higher than the SEN1 to SEN3 and MV samples located close to the cliff in the proximal shore

596 platform (Fig. 14 &15). The ^{10}Be enrichment of the distal shore platform was also observed in Sussex,
597 UK (Hurst et al, 2016) and in Yorkshire, UK (Swirad et al, 2020), at a distance of about 200 m to 300
598 m from the cliff face, respectively. Unfortunately, the small number of samples collected from the
599 Senneville sur Fécamp shore platform is insufficient to provide values of apparent exposure ages
600 deduced from cosmic radiations. The SEN6 to SEN8 concentrations are quite similar to those of
601 MEV3, but unlike the Mesnil-Val site such concentrations do not testify to the last glacial cliff position
602 (S_1) located offshore (Fig. 15).

603

604 **7.2. Evolution of the cliff/platform system**

605 At Mesnil-Val, S_1 is located 180 m farther than the Muron Rocks. S_1 is thus older than the Muron
606 Rocks whose exposure age is evaluated from ^{10}Be concentrations (MV1 to MV7 samples) as being
607 between 4.6-5.4 kyr BP (Regard et al., 2012). If the cliff retreat rate has not changed, S_1 could be 5.9
608 to 6.9 kyr old.

609 At 6.5 ky \pm 1 ky BP, the Holocene sea level rise slowdown is identified at different places around the
610 world, dated from coral reefs in Barbados (Fairbanks, 1989), from melting ice sheet and isostatic
611 models in Western Europe (Lambeck, 1997; Shennan et al., 2012), from ^{14}C dating on foraminifera in
612 England and the British Isles (Horton & Edwards, 2005; Massey et al., 2008), and from ^{14}C dating of
613 sediments infilling in the Seine estuary (Frouin et al., 2007; Tessier et al., 2012). In Normandy, high-
614 resolution seismic profiles acquired in the sedimentary infill of the Seine estuary, southwest of Le
615 Havre, show an architectural change of marine deposits symbolised by Transgressive Systems Tracts
616 corresponding to a quick sea level rise (10 mm/y), a Maximum Flood Surface and Highstand System
617 Tract corresponding to a slow sea level rise (1-3 mm/yr) (Lambeck, 1997). Using ^{14}C dating, the
618 Maximum Flood Surface located at -9 m (NGF) on the Seine Estuary channel edges and at -13 m
619 (NGF) in the Seine channel axis was dated at around 6.5 ky BP (Tessier et al., 2012).

620 Moreover, at 20 km north of Mesnil-Val, some peat layers were discovered in two boreholes made
621 north of Ault, in the lowland of "Bas-Champs de Cayeux", where the cliff-line disappears gradually
622 inland. Sedimentary infill covers the chalk rock platform and peat layers are interspersed with grey silt.

623 Peats recognised between -10 m to -6 m (NGF) are dated from 5.5 ky to 7.5 ky BP (Beun & Broquet,
624 1980). Buried peat layers attest to the sea-level rise slowing down during the Mid-to Late Holocene.

625 When compared, the observed depth of S_1 in the chalk resulting from an erosive process and the
626 depth of sediment accumulation in the Seine estuary and Cayeux lowland are quite equivalent. Taking
627 into account the current depth of S_1 (top) at -10m, we suggest that the formation of S_1 occurred during
628 the Holocene sea level rise slowdown at $6.5 \text{ ky} \pm 1 \text{ ky BP}$.

629 We have taken into account that the S_1 edge remained static and the widening of the platform over
630 time is only the product of cliff retreat processes (Johnson, 1919; de Lange & Moon, 2005; Walkden &
631 Hall, 2005), following a static evolution model (Sunamura, 1983; Trenhaile, 2000, 2001a, 2001b; de
632 Lange & Moon, 2005). Therefore, S_1 is a submarine geomorphological feature indicative of the paleo-
633 cliff location during a past sea level slowdown at about $6.5 \text{ ky} \pm 1 \text{ ky BP}$. We thus consider the location
634 of the present-day cliff-line as an onshore translation of the S_1 edge using a constant cliff retreat rate
635 through the Holocene, which creates the inner shore platform (Fig. 16). The cliff previously located on
636 S_1 is a fossil remnant of the active cliff during the previous highstand sea level, the MIS5e (125 ky BP,
637 Siddall et al., 2007) that underwent degradation by subaerial periglacial processes during the last
638 glacial periods (MIS4 to MIS2), when the sea was far away.

639 The outer platform edge, S_2 , is found at -17m (NGF) offshore the Cap d'Antifer cape and in the Biville-
640 sur-Mer section where it is partially covered with sand. S_2 is not found in the other studied sections
641 due to the gravel cover offshore Fécamp, Senneville-sur-Fécamp, Criel sur-Mer, Mesnil-Val, and Ault.

642 The outer platform, extending spatially 500m wide, from depths of -17m (top of S_2) to about -15m
643 (base of S_1) is associated with a sea-level stillstand necessarily lower than the Holocene sea level rise
644 responsible for the inner platform creation.

645 A similar subtidal cliff is also reported along the submarine rock platform of the NW Cotentin (NW
646 Normandy located in the North Armorican massif), at about -20 m depth, where it is associated with
647 past sea level stillstands estimated at MIS5a and/or MIS5c (Coutard et al., 2006), when the sea level
648 was lower than during MIS5e. Based on a similar depth, we assume the same origin for the S_2 edge
649 observed offshore the Cap d'Antifer cape at -17 m and the subtidal cliff of NW Cotentin observed at -

650 20 m, as a shoreline angle track of the previous high sea level of MIS 5a and/or 5c, dated at 96 and/or
651 82 ky (Fig. 16).

652 As observed along the northern Iberian Peninsula in the Bay of Biscay, a sequence of twelve
653 submerged marine terraces were identified at various depths, ranging from -13m to -92m. They
654 illustrate the irregularity of the preservation of fossil shorelines preservation and submerged
655 submarine terraces that seem to depend on the interplay between wave climatology, lithology, and
656 bedding direction (Bilbao-Lasa et al, 2020). The preservation of the outer platform and its edge (S2)
657 offshore the Cap d'Antifer cape may impact the lithological change of the underlying Gaize Formation
658 to the overlying Glauconitic Chalk Formation (Fig. 4). Some relicts of Pleistocene raised beaches are
659 still preserved on the English Channel coast in England (Black Rock, Brighton marina) (Smith, 1936,
660 Mortimore, 1997, Parfitt et al., 1998) and in Sangatte, France (Sommé et al., 1999, Antoine et al.,
661 2011). They are evidence of Pleistocene shore platforms sealed with "head" deposits formed as scree,
662 solifluction, and hillslope wash sediments that flow over the ancient chalk cliff line during wetter and
663 periglacial climates. During the last glacial period, the outer platform probably created during the
664 MIS5e highstand sea-level was sealed under periglacial deposits, and only recently rejuvenated
665 following the Holocene marine transgression (Fig.16).

666 **7.3. Long-term retreat rates on Normandy chalk cliffs**

667 **7.3.1. Contemporary cliff retreat**

668 Contemporary retreat rates have been estimated along 50 m bins along the coast stretch by aerial
669 photogrammetric analysis of the cliff top between 1966 and 1995 (Costa et al., 2004), and 1966-2008
670 (Letortu et al., 2014). The coastal section from the Cap d'Antifer cape to Etretat shows the lowest
671 retreat rates with a mean of 0.088 m/y. Between Fécamp and Eletot, the mean retreat rate is 0.118
672 m/y, with local high retreat rates that are sometimes greater than 0.5 m/y. Finally, the section between
673 Biville-sur-Mer and Mesnil-Val shows the highest contemporary mean retreat rate of 0.135 m/y (Costa
674 et al., 2004; Letortu et al., 2014) (Fig. 17).

675 **7.3.2. Long-term (Holocene) cliff retreat**

676 Cosmogenic nuclides (^{10}Be) in Mesnil-Val and Senneville-sur-Fécamp, indicate that S₁ dates back to
677 about 6ka BP. Regional correlations indicate that this date corresponds to the sea level rise up to its

678 current level, and the ensuing reactivation of coastal erosion and cliff retreat. A compilation of data
679 from ^{10}Be and from literature led us to estimate this episode at 6.5 ± 1 ky BP.

680 The total Holocene cliff retreat rate is calculated using the distance between the paleo-cliff (S_1) and the
681 current cliff location. Using a duration of 6.5 ± 1 ky, long-term average retreat rates are calculated and
682 compared to the contemporary ones (Fig. 17). The Ault long-term retreat rates could not be calculated
683 due to the lack of S_1 edge observations. Unlike contemporary retreat rates, long-term retreat rates (6.5
684 ky) are spatially quite homogenous. This is due to the constant distance between S_1 and the current
685 coastline. Some rocky capes behave differently, like between le Tilleul and Etretat, where the long-
686 term retreat rate is lower than the current one (*Manneporte* and *Porte d'Aval*) (Fig. 17). Along the
687 section from the Cap d'Antifer cape to Etretat the long-term average cliff retreat rate is $0.051 \text{ m/y} \pm$
688 0.008 m/y . This represents the lowest rate observed along the studied coastal sections. Between
689 Fécamp and Eletot, the long-term mean retreat rate is $0.060 \text{ m/y} \pm 0.009 \text{ m/y}$ with a slight increase
690 between Fécamp and Eletot in the case of contemporary retreat rates (Fig. 17). From Biville-sur-Mer
691 to Mesnil-Val the long-term average cliff retreat rate of $0.090 \text{ m/y} \pm 0.014 \text{ m/y}$ is the highest one
692 observed. At Mesnil-Val, where the inner platform is the widest, at the Muron rocks, the long-term
693 retreat rate is $0.13 \text{ m/y} \pm 0.014 \text{ m/y}$, which is quite similar to the retreat values estimated on the shore
694 platform by Regard et al. (2012) using cosmogenic dating ($0.11\text{-}0.13 \text{ m/y}$) (Fig. 17).

695 Long-term mean retreat rates calculated over the period from $6.5 \text{ ky} \pm 1 \text{ ky}$ BP to today are 33% (Biville
696 to Mesnil-Val section) to 57% (Fécamp to Eletot section) slower than the corresponding contemporary
697 cliff retreat rates, suggesting a recent acceleration in the erosion of coastal chalk cliff sections, as has
698 also been observed on the south coast of Great Britain (Hurst et al., 2016).

699

700 **7. Conclusion**

701 The new high resolution topo-bathymetric DEMs generated for the Normandy chalky coast show a
702 submarine rocky platform composed of a continuous inner platform and local outer platform. One
703 study site offshore the Cap d'Antifer cape illustrates the occurrence of an outer platform delineated by
704 a step (S_2) located at -17 m . Analogous to the submarine cliffs reported in the crystalline geological
705 framework of western Normandy, we assume that such a deep platform could be associated to an old

706 high sea level stillstands dating from MIS5a and/or MIS5c (96 and 82 ky BP, respectively). We
707 demonstrated that the inner platform edge (S_1), located at -9 m to -10 m (NGF), can be associated
708 with the previous position of the cliff, corresponding to the cliff position before the sea level dropped at
709 the end of the last glacial period (MIS2). Therefore, the Normandy inner platform developed since the
710 Holocene and gradually widened through cliff retreat and downwearing. The inner platform width is a
711 direct function of the chalk lithology characteristics and the tidal regime. The higher the intrinsic
712 permeability of the chalk and the higher the tidal regime are, the wider the platform is. The ^{10}Be
713 cosmogenic concentration of shore and inner platform samples allowed estimating the starting
714 moment of the current cliff retreat to be 6.5 ± 1 ky BP. This moment corresponds to the slowing down
715 of the Holocene sea level rise. Finally, we calculated the average Normandy cliff retreat rates since
716 $6.5 \text{ ky} \pm 1$ ky using the distance between S_1 and the current cliff line. Cliff retreat rates since $6.5 \text{ ky} \pm 1$
717 ky varied from $0.051 \text{ m/y} \pm 0.008 \text{ m/y}$ to $0.090 \text{ m/y} \pm 0.014 \text{ m/y}$, lower by 33% to 57% while compared
718 to the contemporary ones for each study site. This result suggests an acceleration of coastal cliff
719 retreats rates in Normandy during the contemporary period.

720 **Acknowledgments**

721 This work is part of a PhD thesis (T.D) and received a grant awarded by Le Havre Normandie
722 Université allocation. The INSU/CNRS French national program EC2CO (Ecosphère Continentale et
723 Côtière) - DRIL (CROCO-DYL project) supported this work. Data used to merge detailed onshore-
724 offshore DEMs was provided from the French National Institute of Geography (IGN) for the BDALTI25
725 and the RGEALTI databases. Some LIDAR data surveyed by the CIRCLE crew from UMR 6143 M2C
726 (Université Caen Normandie) were used on the Mesnil-Val site and a TLS DEM for Senneville-sur-
727 Fécamp was part of the INSU-CNRS RELIEF (2007) project conducted by V.R. The CROCOLIT-2013,
728 SPLASHALIOT-2014, and CROCO-CAUX-2017 cruises were operated on the R/V Haliotis
729 (IFREMER) and we would like to thank the CNFC and the Haliotis's crew (Genavir) for their work.
730 Finally, the Normandy Region sustained project RIN SELINE allowed to us to perform cosmogenic
731 measurements at the ASTER AMS national facility, CEREGE (Aix-en-Provence) under the supervision
732 of Regis Braucher and Laetitia Leani. We are also grateful to the Editor Edward Anthony and the
733 reviewers (Brian Finlayson and two others anonymous reviewers) whose suggestions undoubtedly
734 contributed to improve our article.

735

736 **Table Captions**

737 **Table 1:** Petrophysical and geomechanical properties of the Normandy, Hauts de France, and Sussex
738 chalk samples with: D.I (diagenesis index), ϕ (porosity), K (permeability), and UCS (uniaxial
739 compressive strength). [1] Duperret et al. 2005, [2] Faÿ-Gomord et al, 2016.

740 **Table 2:** Sample ^{10}Be concentrations and uncertainty measured on *in situ* flint samples at the Mesnil-
741 Val rock platform. MV samples are from the shore platform (Regard et al., 2012). MEV are the new
742 subtidal samples from the rock platform (this study).

743 **Table 3:** ^{10}Be concentrations and uncertainty measured on *in situ* flint samples at the Senneville-sur-
744 Fécamp shore platform.

745

746 **Figure Captions**

747 **Figure 1:** Geological map of eastern coastal Normandy (adapted from Duperret et al., 2012). (A) DEM
748 map with Normandy geology corresponding to the west border of the Paris basin (Neau, 1979). Rose
749 diagram represents main wave orientations recorded at the Penly buoy from January 2018 to March
750 2019 (CEREMA, 2018). Localisation of CROCOLIT, SPLASHALIOT, and CROCOCAUX cruise (R/V
751 Haliotis) navigation tracks. Black squares refer to detailed figures of the manuscript. (B) Geological
752 cliff section from the Cap d'Antifer cape to Ault, covering a distance of 140 km and showing cliff face
753 exposure from 20 to 120 m high, with a vertical exaggeration of 100. Abbreviations of the geological
754 section are FQ: Le Fourquet, FC: Fécamp, SF: Senneville-sur-Fécamp, SVC: Saint Valéry en Caux, F-
755 L fault: Fécamp-Lillebonne fault, and M/V: Mesnil-Val.

756 **Figure 2:** Stratigraphy and lithostratigraphy of the Chalk Formations, with field key-markers in
757 Normandy, adapted from Mortimore (2001); Duperret et al.(2012) and Lower Cretaceous Formations
758 reported from the field (Juignet (1974) and local boreholes (BRGM database)).

759 **Figure 3:** (A) Land-sea DEM of the the Cap d'Antifer cape to Etretat coastal section with bathymetric
760 cover. The colour-scale is indicative of depth, with variations from +20m to -20m. Detailed bathymetry

761 is provided by the CROCAUX cruise and the land DEM from RGEAlti (IGN). Continuous black line
762 corresponds to the Low Astronomical Tide Level (LAT) located at -4.2 m (NGF). White lines
763 correspond to morphological steps/edges (S_0 , S_1 , and S_2) (see text). (B) Detail of the land-sea DEM of
764 the shore and subtidal rock platforms at Le Fourquet. Black lines are isobaths labeled in meters. (C)
765 3D view from the west of the bathymetric dataset between Etretat and Le Tilleul, illustrating steps of
766 the subtidal rock platform, with high vertical exaggeration.

767 **Figure 4:** (A) Offshore lithological map of the the Cap d'Antifer cape to Etretat section. White lines
768 correspond to morphological steps/edges (S_0 , S_1 , and S_2). Dip symbols refer to field observations. Red
769 stars are the location of the geological boreholes made by the BRGM at Le Tilleul and Etretat (1963,
770 1970). (B) Topo-bathymetric profile of the rock platform, with vertical exaggeration (V.E.=12) based
771 on the national terrestrial reference origin (NGF). Outcrop lithologies (Chalk Formations) are
772 interpreted from field observations on the cliff face and the shore platform. CPJ is the Cliff Platform
773 Junction located at 0.5 m high (NGF). The surface between the High Astronomical Tide (HAT) and the
774 Low Astronomical Tide (LAT) correspond to the intertidal domain. HAT is at 4.64 m (NGF) and LAT at
775 -4.2 m (NGF).

776 **Figure 5:** (A) Land-sea DEM of the Fécamp to Eletot coastal section with bathymetric cover. Detailed
777 bathymetry is provided by the CROCOCAUX cruise and land DEM from RGEAlti (IGN). The color-
778 scale is indicative of the depth, with variations from +20m to -20m. Solid black line corresponds to the
779 Low Astronomical Tide Level (LAT) at -4.2 m (NGF). White lines correspond to morphological
780 steps/edges (S_0 and S_1). A bathymetric detail shows a large paleo-scrée indenting the S_1 step offshore
781 Senneville-sur-Fécamp (see text). (B) Detailed Land-sea DEM of the shore and subtidal rock platforms
782 at the Cap Fagnet cape. Black lines are isobaths labeled in meters. (C) 3D view from the NW of the
783 bathymetric dataset between Eletot and Senneville-sur-Fécamp illustrating steps of the subtidal rock
784 platform, with high vertical exaggeration.

785 **Figure 6:** (A) Offshore lithological map of the Fécamp to Eletot section. White lines correspond to
786 morphological steps/edges (S_0 and S_1). Dip symbols refer to field observations. Red star is the
787 location of the geological borehole conducted by the BRGM (1969) at Fécamp. (B) Topo-bathymetric
788 profile of the rock platform, with vertical exaggeration (V.E.=12) based on the national terrestrial
789 reference origin (NGF). Outcrop lithologies (Chalk Formations) are interpreted from field observations

790 on the cliff face and the shore platform. CPJ is the Cliff Platform Junction located at about 2 m high
791 (NGF). The surface between the High Astronomical Tide (HAT) and the Low Astronomical Tide (LAT)
792 corresponds to the intertidal domain. HAT is located at 4.64 m (NGF) and LAT at -4.2 m (NGF).

793 **Figure 7:** (A) Land-sea DEM of the Biville-sur-Mer to Mesnil-Val (MV) coastal section with bathymetric
794 cover. Detailed bathymetry is provided by the CROCOLIT-1 and SPLASHALIOT-02 cruises and land
795 DEM from RGEAlt (IGN). The color-scale is indicative of the depth, with variations from +20m to -
796 20m. Continuous black line corresponds to the Low Astronomical Tide Level (LAT) at -4.4 m (NGF).
797 White lines correspond to morphological steps/edges (S_0 and S_1). Abbreviation of the map is MV:
798 Mesnil-Val. (B) Detailed Land-sea DEM of the shore and subtidal rock platforms at Criel-sur-Mer.
799 Black lines are isobaths labeled in meters. (C) 3D view from the NW of the bathymetric dataset west of
800 Criel-sur-Mer side illustrating steps of the subtidal rock platform, with high vertical exaggeration.

801 **Figure 8:** (A) Offshore lithological map of Biville-sur-Mer to Mesnil-Val (MV) section. Dip symbols refer
802 to field observations. White lines correspond to morphological steps/edges (S_0 and S_1). Red star is the
803 location of the geological borehole made by the BRGM (1956) at Criel-sur-Mer. Abbreviation of the
804 map is MV: Mesnil-Val. (B) Topo-bathymetric profile of the rock platform, with vertical exaggeration
805 (V.E.=12) based on the national terrestrial reference origin (NGF). Outcrop lithologies (Chalk
806 Formations) are interpreted from field observations on the cliff face and the shore platform. CPJ is the
807 Cliff Platform Junction located at about 2 m high (NGF), referring to the national terrestrial reference
808 origin (NGF). The surface between High Astronomical tide (HAT) and the Low Astronomical Tide
809 (LAT) corresponds to the intertidal domain. HAT is at 5.8 m (NGF) and LAT at -4.4 (NGF).

810 **Figure 9:** Bathymetry and one Chirp profile “Splash33” (from SPLASHALIOT-02 cruise) and reference
811 boreholes (BRGM-5 and BRGM-6) with stratigraphical interpretations (BRGM, 1993) located offshore
812 Penly at 3.8 km SW from Criel-sur-Mer, illustrating the S_1 continuity along the coast (white line) and
813 the outer platform surface of the rock platform located under Pleistocene sands.

814 **Figure 10:** (A) Land-sea DEM of the Ault coastal section with the bathymetric cover of CROCOLIT-01
815 cruise. The solid black line corresponds to the Low Astronomical Tide Level (LAT) at -4.4 m (NGF). (B)
816 Land-sea DEM of the shore platform at the Second-Val location. The solid black line corresponds to
817 the Low Astronomical Tide Level (LAT) -4.4 m (NGF). Black lines are isobaths labeled in meters. (C)
818 Offshore DEM of the elevation of the chalk basement generated from seismic profile interpretations

819 (CROCOLIT_01, 2013). White line corresponds to the edge S_1 . (D) Offshore lithological map of the
820 Ault section with sand isopachs (m). Black line corresponds to the inner platform edge (S_1) located
821 under the sand cover. Red star is the location of the BRGM-7 geological borehole made by the BRGM
822 (1973).

823 **Figure 11:** 3D conceptual model of the chalk cliff/rock platform system in Normandy. CPJ is the Cliff
824 Platform Junction. S_2 is the rock platform edge, S_1 is the edge that delineates the inner platform and
825 the outer platform, and S_0 is a step corresponding to a hardground or a lithological transition. Altitudes
826 and depths of each slope rupture are indicated, referred to the NGF system. LAT and HAT are the
827 Low Astronomical Tide and the High Astronomical Tide levels, respectively.

828 **Figure 12:** Graph representing 35 rock platform topo-bathymetric profiles drawn on the four coastal
829 sections studied with the inner platform edge (S_1) considered as common point. Each color refers to a
830 Chalk Formation unit and the symbols to the location along the coast.

831 **Figure 13:** Chalk inner platform slopes (in degree) versus inner platform width (in meters), as a
832 function of the Chalk Formation, performed on 45 random bathymetry profiles along the four study
833 sites detailed in this manuscript. Colors and symbols refer to a Chalk Formation unit.

834 **Figure 14:** A. Detailed DEMs of the Senneville-sur-Fécamp shore and rock platform (CROCOCAUX
835 cruise). Flint samples location (SEN) on the shore platform is shown. The solid black line corresponds
836 to the level of astronomical tide (LAT) and delineates intertidal shore platform and subtidal rock
837 platform. S_1 location is indicated. B. ^{10}Be sample concentrations and error bars versus the distance of
838 the sample from the cliff (CPJ).

839 **Figure 15:** A. Detailed DEMs of the Mesnil-Val shore and rock platform (CROCOLIT-1 cruise). Flint
840 samples location (MV) on the shore platform is from Regard et al. (2012). MEV samples are new and
841 collected by divers on the subtidal rock platform. The solid black line corresponds to the level of
842 astronomical tide (LAT) and delineates intertidal shore platform and subtidal rock platform. S_1 location
843 is indicated and locally limits the Muron rocks subtidal plateau. B. ^{10}Be sample concentrations and
844 error bars versus the distance of samples from the cliff (CPJ).

845 **Figure 16:** Conceptual 3D block diagram evolution model of the Normandy Chalk cliff/rockplatform
846 system depending on Holocene and Late Pleistocene sea-level variations and derived from the current

847 conceptual morphology of the coast. The past sea-level variation curve is adapted from Lambeck
848 (1997). Each block diagram represents a past situation of the system. a: present-day, b: 4kyr, c: 6.5
849 kyr, d: Between MIS2 and MIS4, e: between MIS5a and MIS 5c, f: MIS5e. See explanations in the
850 text.

851 **Figure 17:** Comparison of modern cliff retreat rates in grey (Costa et al., 2004; Letortu et al., 2014), 3
852 ky retreat rates at Mesnil-Val (¹⁰Be dating, Regard et al., 2012) indicated with a triangle and long term
853 retreat rates (this study, 6.5 ky ± 1 ky) in black, measured from the inner platform edge (S₁) to the
854 present day cliff position of three coastal sections: the Cap d'Antifer cape to Etretat, Fécamp to Eletot,
855 and Biville-sur-Mer to Mesnil-Val.

856

857

858 **References**

859 Amédéo, F., & Robaszynski, F., 2000. Les craies à silex du Turonien supérieur au Santonien du
860 Boulonnais (France) au regard de la stratigraphie événementielle. *Géologie de France*, 4, 39-56.

861 Anderson R.S., Densmore A.L., Ellis M.A., 1999, The generation and degradation of marine
862 terraces, *Basin Research*, 11, 7-19.

863 Antoine P., Auguste P., Bahain J.J., Longuet S., 2011, Datation et reconstruction
864 paléoenvironnementale d'un site paléolithique moyen submergé en Manche Est : Ault-Onival
865 (Somme, France), *Quaternaire*, vol 22/3, 221-233.

866 Augris, C., Clabaut, P., Bourillet, J., Drèves, L., 1993. Carte morpho-sédimentaire du domaine
867 côtier entre Dieppe et Le Tréport (Seine-Maritime). Notice explicative. IFREMER

868 Augris, C., Clabaut P., Costa S., Latteux B., Gourmelon F., 2004. *Evolution morpho-sédimentaire*
869 *du domaine littoral et marin de la Seine-Maritime*. Editions Quae.

870 Beun & Broquet, 1980. Tectonique quaternaire (Holocène ?) dans la plaine littorale picarde des
871 « Bas-Champs de Cayeux » et de leurs abords orientaux. In : Bulletin de l'Association française
872 pour l'étude du quaternaire – Volume 17- Numéro 1-2. Pp. 47-52.

873 Bilbao-Lasa P., Jara-Munoz J., Pedoja K., Alvarez I., Aranburu A., Iriarte E., Galparsoro I., 2020,
874 Submerged marine terraces identification and an approach for numerical modeling the sequence
875 formation in the Bay of Biscay (Northeastern Iberian Peninsula), *Frontiers in Earth Science*, 8, 47.

876 Blanco Chao, R., Costa Casais, M., Martínez Cortizas, A., Pérez Alberti, A., Trenhaile, A. S.,
877 2003. Evolution and inheritance of a rock coast: western Galicia, northwestern Spain. *Earth*
878 *Surface Processes and Landforms: The Journal of the British Geomorphological Research*
879 *Group*, 28(7), 757-775.

- 880 BRGM, 1956. Banque du sous-sol, BSS000DTWM, Criel-sur-Mer (76192).
881 <http://ficheinfoterre.brgm.fr/InfoterreFiche/ficheBss.action?id=BSS000DTWM>.
- 882 BRGM, 1963. Banque du sous-sol, BSS000EKFG, Etretat (76254).
883 <http://ficheinfoterre.brgm.fr/InfoterreFiche/ficheBss.action?id=BSS000EKFG>.
- 884 BRGM, 1969. Banque du sous-sol, BSS000ELDU, Fécamp (76259).
885 <http://ficheinfoterre.brgm.fr/InfoterreFiche/ficheBss.action?id=BSS000ELDU>.
- 886 BRGM, 1970. Banque du sous-sol, BSS000EKHC, Le Tilleul (76693).
887 <http://ficheinfoterre.brgm.fr/InfoterreFiche/ficheBss.action?id=BSS000EKHC>.
- 888 BRGM, 1973. Banque du sous-sol, BSS000DDQB, Woignarue (80826).
889 <http://ficheinfoterre.brgm.fr/InfoterreFiche/ficheBss.action?id=BSS000DDQB>.
- 890 BRGM, 1993. Banque du sous-sol, BSS000DTWB/ BSS000DTWD, Penly
891 (76618). <http://ficheinfoterre.brgm.fr/InfoterreFiche/ficheBss.action?id=BSS000DTWB>
892 <http://ficheinfoterre.brgm.fr/InfoterreFiche/ficheBss.action?id=BSS000DTWD>
- 893 Brossard, J., & Duperret, A., 2004. Coastal chalk cliff erosion: experimental investigation on the
894 role of marine factors. *Geological Society, London, Engineering Geology Special*
895 *Publications, 20(1)*, 109-120.
- 896 Castleden, R., & Green, C., 1996. *Classic landforms of the Sussex coast*. Sheffield: Geographical
897 Association.
- 898 CEREMA, 2019. <http://candhis.cetmef.developpement-durable.gouv.fr/>
- 899 Choi, K. H., Seong, Y. B., Jung, P. M., Lee, S. Y., 2012. Using cosmogenic ¹⁰Be dating to unravel
900 the antiquity of a rocky shore platform on the west coast of Korea. *Journal of Coastal*
901 *Research, 28 (3)*, 641-657.
- 902 Costa, S., 1997. Dynamique littorale et risques naturels : L'impact des aménagements, des
903 variations du niveau marin et des modifications climatiques entre la Baie de Seine et la Baie de
904 Somme. Thèse de doctorat, Université de Paris I.
- 905 Costa, S., Delahaye, D., Freiré-Diaz, S., Di Nocera, L., Davidson, R., Plessis, E., 2004.
906 Quantification of the Normandy and Picardy chalk cliff retreat by photogrammetric analysis. *in:*
907 Mortimore R.N. and Duperret A. (eds), *Coastal Chalk Cliff instability*. Geological Society, London,
908 Engineering Geology Special Publications, 20 (1), 139-148.
- 909 Costa, S., Laignel, B., Hauchard, E., Delahaye, D., 2006. Facteurs de répartition des entonnoirs
910 de dissolution dans les craies du littoral du Nord-Ouest du Bassin de Paris. *Zeitschrift für*
911 *Geomorphologie, NF*, 95-116.
- 912 Coutard, S., Lautridou, J. P., Rhodes, E., Clet, M., 2006. Tectonic, eustatic and climatic
913 significance of raised beaches of Val de Saire, Cotentin, Normandy, France. *Quaternary Science*
914 *Reviews, 25 (5-6)*, 595-611.
- 915 de Lange, W. P., & Moon, V. G., 2005. Estimating long-term cliff recession rates from shore
916 platform widths. *Engineering Geology, 80 (3-4)*, 292-301.
- 917 Davies, P., Sunamura, T., Takeda, I., Tsujimoto, H., & Williams, A. T., 2006. Controls of shore
918 platform width: the role of rock resistance factors at selected sites in Japan and Wales,
919 UK. *Journal of Coastal Research*, 160-164.

- 920 Dewez, T. J., Rohmer, J., Regard, V., Cnudde, C., 2013. Probabilistic coastal cliff collapse hazard
921 from repeated terrestrial laser surveys: case study from Mesnil Val (Normandy, northern
922 France). *Journal of Coastal Research*, 65 (sp1), 702-707.
- 923 Dewez, T. J. B., Regard, V., Duperret, A., Lasseur, E., 2015. Shore platform lowering due to frost
924 shattering during the 2009 winter at mesnil Val, English Channel coast, NW France. *Earth Surface
925 Processes and Landforms*, 40(12), 1688-1700.
- 926 Dickson, M. E., 2006. Shore platform development around Lord Howe Island, southwest
927 Pacific. *Geomorphology*, 76(3-4), 295-315.
- 928 Dornbusch, U., Robinson, D. A., Moses, C., Williams, R., Costa, S., 2006. Retreat of Chalk cliffs in
929 the eastern English Channel during the last century. *Journal of Maps*, 2 (1), 71-78.
- 930 Dornbusch, U., Robinson, D. A., Moses, C. A., Williams, R. B., 2008. Temporal and spatial
931 variations of chalk cliff retreat in East Sussex, 1873 to 2001. *Marine Geology*, 249 (3-4), 271-282.
- 932 Dornbusch, U., & Robinson, D. A., 2011. Block removal and step backwearing as erosion
933 processes on rock shore platforms: a preliminary case study of the chalk shore platforms of south-
934 east England. *Earth Surface Processes and Landforms*, 36(5), 661-671.
- 935 Dunai, T. J., 2010. *Cosmogenic Nuclides: Principles, concepts and applications in the Earth
936 surface sciences*. Cambridge University Press.
- 937 Duperret, A., 2013a. CROCOLIT_LEG1 cruise, RV Haliotis, <http://dx.doi.org/10.17600/13120080>
- 938 Duperret, A., 2013b. CROCOLIT_LEG3 cruise, RV Haliotis, <http://dx.doi.org/10.17600/13120100>
- 939 Duperret, A., 2017. CROCO-CAUX cruise, RV Haliotis, <https://doi.org/10.17600/17008200>
- 940 Duperret, A., Genter, A., Mortimore, R. N., Delacourt, B., De Pomerai, M. R., 2002. Coastal rock
941 cliff erosion by collapse at Puits, France: the role of impervious marl seams within chalk of NW
942 Europe. *Journal of Coastal Research*, 52-61.
- 943 Duperret, A., Genter, A., Martinez, A., Mortimore, R. N., 2004. Coastal chalk cliff instability in NW
944 France: role olithology, fracture pattern and rainfall. *in: Mortimore R.N. and Duperret A. (eds),
945 Coastal Chalk Cliff instability*. Geological Society, London, Engineering Geology Special
946 Publications, 20 (1), 33-55.
- 947 Duperret, A., Taibi, S., Mortimore, R. N., Daigneault, M., 2005. Effect of groundwater and sea
948 weathering cycles on the strength of chalk rock from unstable coastal cliffs of NW
949 France. *Engineering Geology*, 78 (3-4), 321-343.
- 950 Duperret, A., Vandycke, S., Mortimore, R. N., Genter, A., 2012. How plate tectonics is recorded in
951 chalk deposits along the eastern English Channel in Normandy (France) and Sussex
952 (UK). *Tectonophysics*, 581, 163-181.
- 953 Duperret, A., Raimbault, C., Le Gall, B., Authemayou, C., van Vliet-Lanoë, B., Regard, V.,
954 Dromelet, E., Vandycke, S., 2016. High-resolution onshore–offshore morpho-bathymetric records
955 of modern chalk and granitic shore platforms in NW France. *Comptes Rendus Geoscience*, 348
956 (6), 422-431.
- 957 Fairbanks, R. G., 1989. A 17,000-year glacio-eustatic sea level record: influence of glacial melting
958 rates on the Younger Dryas event and deep-ocean circulation. *Nature*, 342(6250), 637.

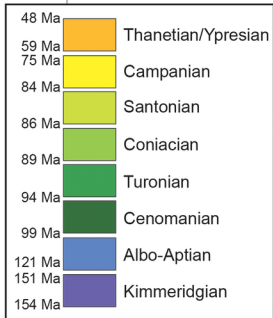
- 959 Faÿ-Gomord, O., Descamps, F., Tshibangu, J. P., Vandycke, S., Swennen, R., 2016. Unraveling
960 chalk microtextural properties from indentation tests. *Engineering Geology*, 209, 30-43.
- 961 Foote, Y., Plessis, E., Robinson, D. A., Henaff, A., Costa, S., 2006. Rates and patterns of
962 downwearing of chalk shore platforms of the Channel Coasts: comparisons between France and
963 England. *Zeitschrift für Geomorphologie Supplementband*, 144, 93-115.
- 964 Frouin, M., Sebag, D., Durand, A., Laignel, B., Saliege, J. F., Mahler, B. J., & Fauchard, C., 2007.
965 Influence of paleotopography, base level and sedimentation rate on estuarine system response to
966 the Holocene sea-level rise: the example of the Marais Vernier, Seine estuary,
967 France. *Sedimentary Geology*, 200(1-2), 15-29.
- 968 Gosse, J. C., & Phillips, F. M., 2001. Terrestrial in situ cosmogenic nuclides: theory and
969 application. *Quaternary Science Reviews*, 20(14), 1475-1560.
- 970 Haslett, S. K., & Curr, R. H., 2001. Stratigraphy and palaeoenvironmental development of
971 Quaternary coarse clastic beach deposits at Plage de Mezpeurleuch, Brittany (France). *Geological
972 Journal*, 36(2), 171-182.
- 973 Hauchard, E., & Laignel, B., 2008. Morphotectonic evolution of the north-western margin of the
974 Paris Basin. *Zeitschrift für Geomorphologie*, 52 (4), 463-488.
- 975 Hénaff, A., Lageat, Y., Costa, S., Plessis, E., 2002. Le recul des falaises crayeuses du Pays de
976 Caux: détermination des processus d'érosion et quantification des rythmes d'évolution/Retreat of
977 chalk cliffs in the Pays de Caux: processes and rates. *Géomorphologie: relief, processus,
978 environnement*, 8(2), 107-118.
- 979 Hénaff, A., Lageat, Y., Costa, S., 2006. Geomorphology and shapping processes of chalk shore
980 platforms of the Channel coasts. *Annales de Géomorphologie/Annals of
981 Geomorphology/Zeitschrift für Geomorphologie*, 144, 61-91.
- 982 Horton, B. P., & Edwards, R. J., 2005. The application of local and regional transfer functions to
983 the reconstruction of Holocene sea levels, north Norfolk, England. *The Holocene*, 15(2), 216-228.
- 984 Hurst, M. D., Rood, D. H., Ellis, M. A., Anderson, R. S., Dornbusch, U., 2016. Recent acceleration
985 in coastal cliff retreat rates on the south coast of Great Britain. *Proceedings of the National
986 Academy of Sciences*, 113 (47), 13336-13341.
- 987 Hurst, M. D., Rood, D. H., Ellis, M. A., 2017. Controls on the distribution of cosmogenic ¹⁰Be
988 across shore platforms. *Earth Surface Dynamics*, 5(1), 67-84.
- 989 Johnson, D. W., 1919. *Shore processes and shoreline development*. John Wiley & Sons,
990 Incorporated.
- 991 Juignet P., 1974. La transgression crétacée sur la bordure orientale du Massif Armoricaïn. Thèse
992 d'état, Université de Caen, 2 vol., 786p.
- 993 Kennedy, D. M., & Dickson, M. E., 2006. Lithological control on the elevation of shore platforms in
994 a microtidal setting. *Earth Surface Processes and Landforms: The Journal of the British
995 Geomorphological Research Group*, 31(12), 1575-1584.
- 996 Lageat, Y., Hénaff, A., Costa, S., 2006. The retreat of the chalk cliffs of the Pays de Caux
997 (France): erosion processes and patterns. *Annales de Géomorphologie/Annals of
998 Geomorphology/Zeitschrift für Geomorphologie*, (144), 183-197.

- 999 Lal, D., 1991. Cosmic ray labeling of erosion surfaces: in situ nuclide production rates and erosion
1000 models. *Earth and Planetary Science Letters*, 104(2-4), 424-439.
- 1001 Lambeck, K., 1997. Sea-level change along the French Atlantic and Channel coasts since the time
1002 of the Last Glacial Maximum. *Palaeogeography, Palaeoclimatology, Palaeoecology*, 129 (1-2), 1-
1003 22.
- 1004 Larsonneur, C., Vaslet, D., Auffret, J. P., 1979. Les sédiments superficiels de la Manche, Carte
1005 géologique de la marge continentale française. *Bureau des Recherches Géologiques et Minières*,
1006 *BRGM, Orléans*.
- 1007 Lasseur E., 2007. La craie du Bassin de Paris (Cénomaniens-Campanien, Crétacé Supérieur).
1008 Sédimentologie de faciès, stratigraphie séquentielle et géométrie 3D, *Thèse de Doctorat de*
1009 *l'Université de Rennes 1, France*, 423p.
- 1010 Lasseur, E., Guillocheau, F., Robin, C., Hanot, F., Vaslet, D., Coueffe, R., Neraudeau, D., 2009. A
1011 relative water-depth model for the Normandy Chalk (Cenomanian–Middle Coniacian, Paris Basin,
1012 France) based on facies patterns of metre-scale cycles. *Sedimentary Geology*, 213 (1-2), 1-26.
- 1013 Letortu, P., Costa, S., Bensaid, A., Cador, J. M., Quénot, H., 2014. Vitesses et modalités de recul
1014 des falaises crayeuses de Haute-Normandie (France): méthodologie et variabilité du
1015 recul. *Géomorphologie: relief, processus, environnement*, 20 (2), 133-144.
- 1016 Letortu, P., Costa, S., Maquaire, O., Delacourt, C., Augereau, E., Davidson, R., Suanez, S.,
1017 Nabucet, J., 2015. Retreat rates, modalities and agents responsible for erosion along the coastal
1018 chalk cliffs of Upper Normandy: The contribution of terrestrial laser
1019 scanning. *Geomorphology*, 245, 3-14.
- 1020 Letortu, P., Costa, S., Maquaire, O., Davidson, R., 2019. Marine and subaerial controls of coastal
1021 chalk cliff erosion in Normandy (France) based on a 7-year laser scanner
1022 monitoring. *Geomorphology*, 335, 76-91.
- 1023 Lim, M., Rosser, N. J., Petley, D. N., Keen, M., 2011. Quantifying the controls and influence of tide
1024 and wave impacts on coastal rock cliff erosion. *Journal of Coastal Research*, 27(1), 46-56.
- 1025 Maillet, G., 2014. SPLASHALIOT-2 cruise, RV Haliotis, <http://dx.doi.org/10.17600/14011800>
- 1026 Massey, A. C., Gehrels, W. R., Charman, D. J., Milne, G. A., Peltier, W. R., Lambeck, K., & Selby,
1027 K. A., 2008. Relative sea-level change and postglacial isostatic adjustment along the coast of
1028 south Devon, United Kingdom. *Journal of Quaternary Science: Published for the Quaternary*
1029 *Research Association*, 23(5), 415-433.
- 1030 Matsumoto H., Dickson M.E., Kench P.S., 2016, An exploratory numerical model of rocky shore
1031 profile evolution, *Geomorphology*, 268, 98-109.
- 1032 Matsuoka, N., & Murton, J., 2008. Frost weathering: recent advances and future
1033 directions. *Permafrost and Periglacial Processes*, 19(2), 195-210.
- 1034 Mortimore R.N., 1997, The Chalk of Sussex and Kent, Geologist's Association Guide, N°57, The
1035 Geologist's Association, 1997.
- 1036 Mortimore, R. N., 2001. Report on mapping of the chalk channel coast of France from Port du
1037 Havre-Antifer to Ault, June-September 2001. *Unpublished report, Brighton University*.
- 1038 Mortimore, R., 2011. A chalk revolution: what have we done to the Chalk of England? *Proceedings*
1039 *of the Geologists' Association*, 122 (2), 232-297.

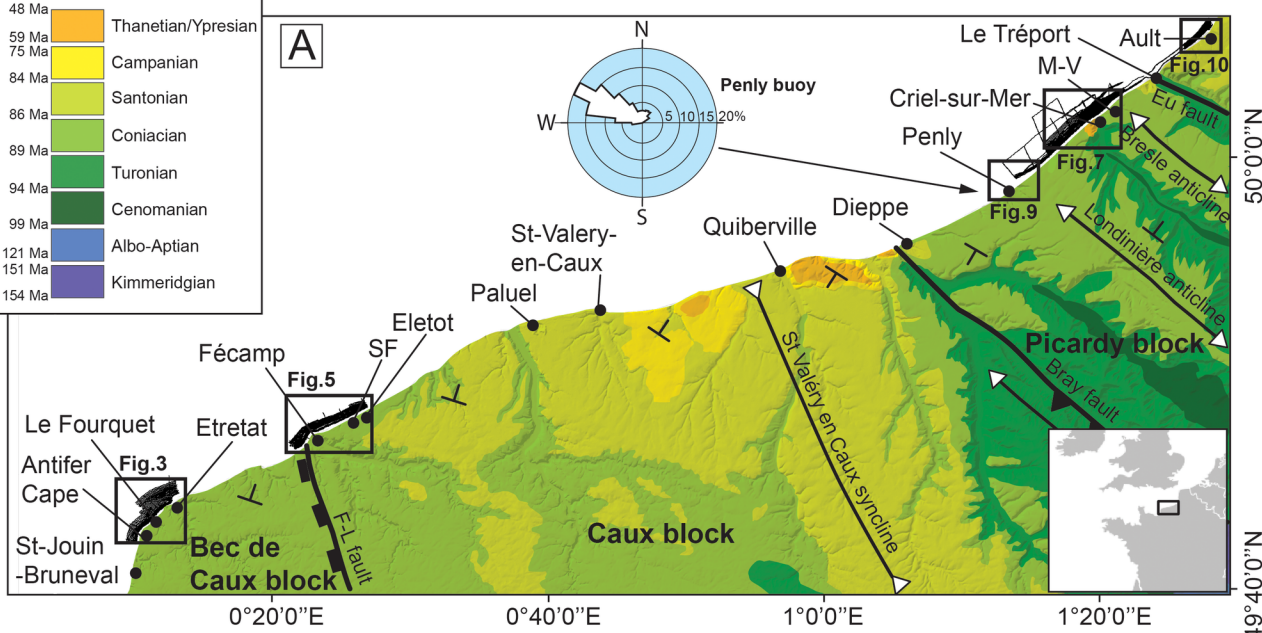
- 1040 Mortimore, R. N., & Pomerol, B., 1987. Correlation of the upper cretaceous white chalk (Turonian
1041 to Campanian) in the Anglo-Paris Basin. *Proceedings of the Geologists' Association*, 98 (2), 97-
1042 143.
- 1043 Mortimore, R. N., & Pomerol, B., 1991. Upper Cretaceous tectonic disruptions in a placid Chalk
1044 sequence in the Anglo-Paris Basin. *Journal of the Geological Society*, 148 (2), 391-404.
- 1045 Mortimore, R., & Pomerol, B., 1997. Upper Cretaceous tectonic phases and end Cretaceous
1046 inversion in the Chalk of the Anglo-Paris Basin. *Proceedings of the geologists' association*, 108
1047 (3), 231-255.
- 1048 Mortimore, R. N., Wood, C. J., Gallois, R. W., 2001. *British upper Cretaceous stratigraphy* (Vol.
1049 23). Joint Nature Conservation Committee (JNCC).
- 1050 Mortimore, R. N., & Duperret, A. (Eds.), 2004. Coastal chalk cliff instability. Geological Society of
1051 London.
- 1052 Moses, C. A., Robinson, D. A., Williams, R. B. G., Marques, F. M. S. F., 2006. Predicting rates of
1053 shore platform downwearing from rock geotechnical properties and laboratory simulation of
1054 weathering and erosion processes. *Zeitschrift fur Geomorphologie Supplementband*, 144, 19.
- 1055 Naylor, L. A., & Stephenson, W. J., 2010. On the role of discontinuities in mediating shore platform
1056 erosion. *Geomorphology*, 114(1-2), 89-100.
- 1057 Neu, G., 1979. Carte géologique à 1/250 000 ème. Feuille de Rouen, BRGM, Orléans.
- 1058 Parfitt S.A., Owen F., Keen D.H., 1998, Pleistocene stratigraphy, vertebrate and mollusca, Black
1059 Rock, Brighton. *in* : Murton J.B., Whiteman C.A., Bates M.R., Bridgland D.R., Long A.J., Roberts
1060 M.B. and Walker M.P. (eds). *The Quaternary of Kent and Sussex : Field Guide*, Quaternary
1061 Research Association, London, 146-150.
- 1062 Peregrine, D. H., Kalliadasis, S., 1996. Filling flows, cliff erosion and cleaning flows. *Journal of*
1063 *Fluid Mechanics*, 310, 365-374.
- 1064 Prémaillon, M., Regard, V., Dewez, T. J., Auda, Y., 2018. GlobR2C2 (Global Recession Rates of
1065 Coastal Cliffs): a global relational database to investigate coastal rocky cliff erosion rate
1066 variations. *Earth Surface Dynamics*, 6(3).
- 1067 Raimbault, C., Duperret, A., Regard, V., Molliex, S., Wyns, R., Authemayou, C., Le Gall, B.,
1068 2018a. Quaternary geomorphological evolution of a granitic shore platform constrained by in situ
1069 ¹⁰Be concentrations, Penmarc'h, SW Brittany, France. *Marine Geology*, 395, 33-47.
- 1070 Raimbault, C., Duperret, A., Le Gall, B., Authemayou, C., 2018b. Structural inheritance and
1071 coastal geomorphology in SW Brittany, France: An onshore/offshore integrated
1072 approach. *Geomorphology*, 306, 141-154.
- 1073 Regard, V., Dewez, T., Bourles, D. L., Anderson, R. S., Duperret, A., Costa, S., Maillet, G. M.,
1074 2012. Late Holocene seacliff retreat recorded by ¹⁰Be profiles across a coastal platform: Theory
1075 and example from the English Channel. *Quaternary Geochronology*, 11, 87-97.
- 1076 Regard, V., Dewez, T. J., Cnudde, C., Hourizadeh, N., 2013. Coastal chalk platform erosion
1077 modulated by step erosion and debris shielding: example from Normandy and Picardy (northern
1078 France). *Journal of Coastal Research*, 65(sp2), 1692-1698.
- 1079 Rodet, J., 1983. Karst et littoral du Bec de Caux (Seine-Maritime, Normandie,
1080 France). *Karstologia*, 2(1), 23-32.

- 1081 Senfaute, G., Duperret, A., Lawrence, J. A., 2009. Micro-seismic precursory cracks prior to rock-
 1082 fall on coastal chalk cliffs: a case study at Mesnil-Val, Normandie, NW France. *Natural Hazards*
 1083 *and Earth System Sciences*, 9 (5), 1625-1641.
- 1084 Shennan, I., Milne, G., & Bradley, S., 2012. Late Holocene vertical land motion and relative sea-
 1085 level changes: lessons from the British Isles. *Journal of Quaternary Science*, 27(1), 64-70.
- 1086 SHOM, 2017. Références Altimétriques Marines. Ports de France métropolitaine et d'outre-mer.
 1087 Côtes du zéro hydrographique et niveaux caractéristiques de la marée.
 1088 <https://diffusion.shom.fr/pro/references-altimetriques-maritimes-ram.html>
- 1089 Stephenson, W. J., & Kirk, R. M., 2000. Development of shore platforms on Kaikoura Peninsula,
 1090 South Island, New Zealand: Part one: the role of waves. *Geomorphology*, 32(1-2), 21-41.
- 1091 Siddall, M., Chappell, J., Potter, E. K., 2007. 7. Eustatic sea level during past interglacials.
 1092 In *Developments in Quaternary Sciences* (Vol. 7, pp. 75-92). Elsevier.
- 1093 Smith B., 1936, Levels in the raised beach, Black Rock, Brighton. *Geological Magazine*, 73, 423-
 1094 426.
- 1095 Sommé J., Antoine P., Cunat-Boge N., Lefevre D., Munaut A.V., 1999, Le Pleistocene moyen de
 1096 la mer du Nord en France. Falaise de Sangatte et formation de Herzeele, *Quaternaire*, 10, 151-
 1097 160.
- 1098 Sunamura, T., 1977. A relationship between wave-induced cliff erosion and erosive force of
 1099 waves. *The Journal of Geology*, 85(5), 613-618.
- 1100 Sunamura, T., 1983. Processes of sea cliff and platform erosion. *CRC handbook of coastal*
 1101 *processes and erosion*, 233-265.
- 1102 Sunamura, T., 1992. *Geomorphology of rocky coasts* (Vol. 302). Chichester: Wiley.
- 1103 Swirad Z.M, 2018, Multi-scale assessment of shore platform erosion, Doctoral PhD thesis,
 1104 Durham University, UK.
- 1105 Swirad Z.M., Rosser N.J., Brain M.J., Rood D.H., Hurst M.D., Wilcken K.M, Barlow J., 2020,
 1106 Cosmogenic exposure dating reveals limited long-term variability in erosion of a rocky coastline,
 1107 *Nature Communications*, (2020) 11:3804
- 1108 Tessier, B., Billeaud, I., Sorrel, P., Delsinne, N., Lesueur, P., 2012. Infilling stratigraphy of
 1109 macrotidal tide-dominated estuaries. Controlling mechanisms: Sea-level fluctuations, bedrock
 1110 morphology, sediment supply and climate changes (The examples of the Seine estuary and the
 1111 Mont-Saint-Michel Bay, English Channel, NW France). *Sedimentary Geology*, 279, 62-73.
- 1112 Trenhaile, A. S., 1978. The shore platforms of Gaspé, Québec. *Annals of the Association of*
 1113 *American Geographers*, 68(1), 95-114.
- 1114 Trenhaile, A. S., 1980. Shore platforms: a neglected coastal feature. *Progress in physical*
 1115 *geography*, 4(1), 1-23.
- 1116 Trenhaile, A. S., 1987. *The geomorphology of rock coasts*. Oxford University Press, USA.
- 1117 Trenhaile, A. S., 1999. The width of shore platforms in Britain, Canada, and Japan. *Journal of*
 1118 *Coastal Research*, 355-364.

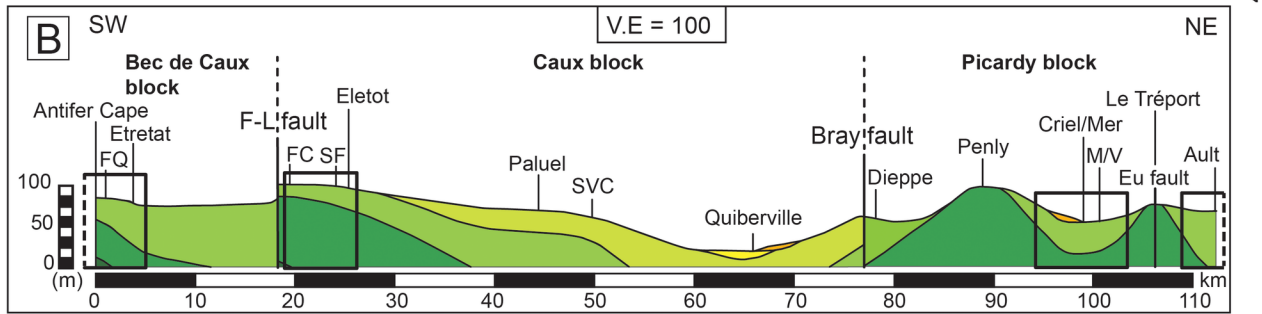
- 1119 Trenhaile, A. S., 2000. Modeling the development of wave-cut shore platforms. *Marine*
1120 *Geology*, 166 (1-4), 163-178.
- 1121 Trenhaile, A. S., 2001a. Modelling the Quaternary evolution of shore platforms and erosional
1122 continental shelves. *Earth Surface Processes and Landforms: The Journal of the British*
1123 *Geomorphological Research Group*, 26 (10), 1103-1128.
- 1124 Trenhaile, A. S., 2001b. Modeling the effect of late Quaternary interglacial sea levels on wave-cut
1125 shore platforms. *Marine Geology*, 172 (3-4), 205-223.
- 1126 Trenhaile, A. S., 2002. Rock coasts, with particular emphasis on shore
1127 platforms. *Geomorphology*, 48(1-3), 7-22.
- 1128 Walkden, M. J. A., & Hall, J. W., 2005. A predictive mesoscale model of the erosion and profile
1129 development of soft rock shores. *Coastal Engineering*, 52(6), 535-563.
- 1130 Wright, L. W. 1970. Variation in the level of the cliff/shore platform junction along the south coast
1131 of Great Britain. *Marine Geology*, 9 (5), 347-353.
- 1132 Young, A. P., Adams, P. N., O'Reilly, W. C., Flick, R. E., Guza, R. T., 2011. Coastal cliff ground
1133 motions from local ocean swell and infragravity waves in southern California. *Journal of*
1134 *Geophysical Research: Oceans*, 116(C9).
- 1135



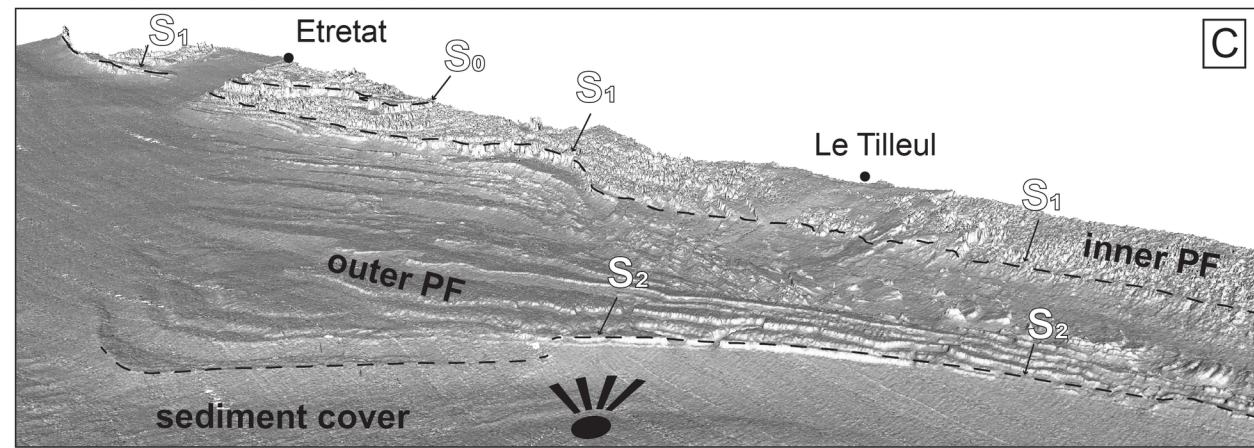
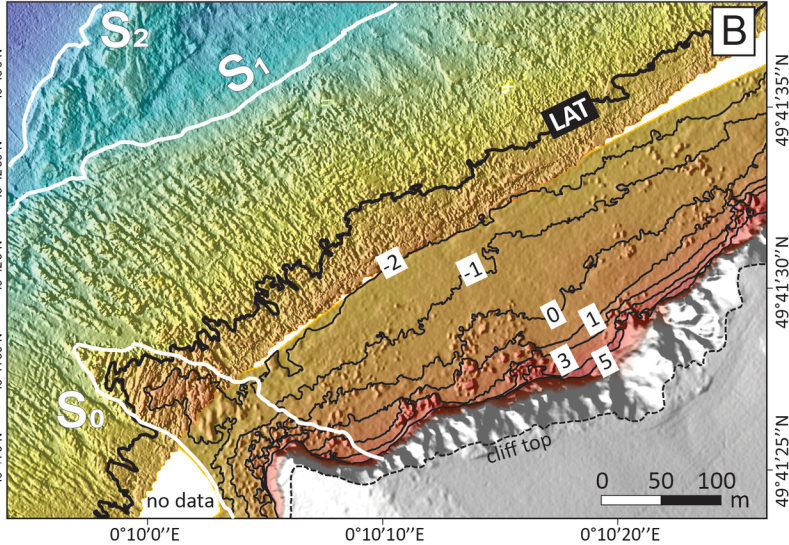
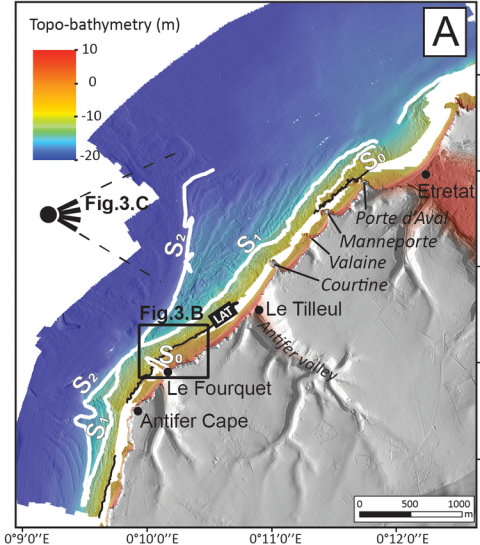
A

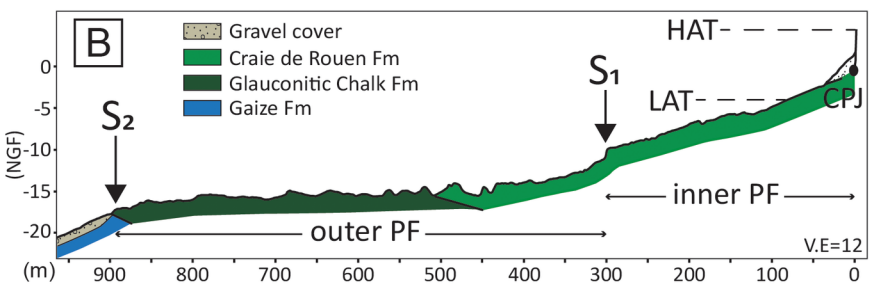
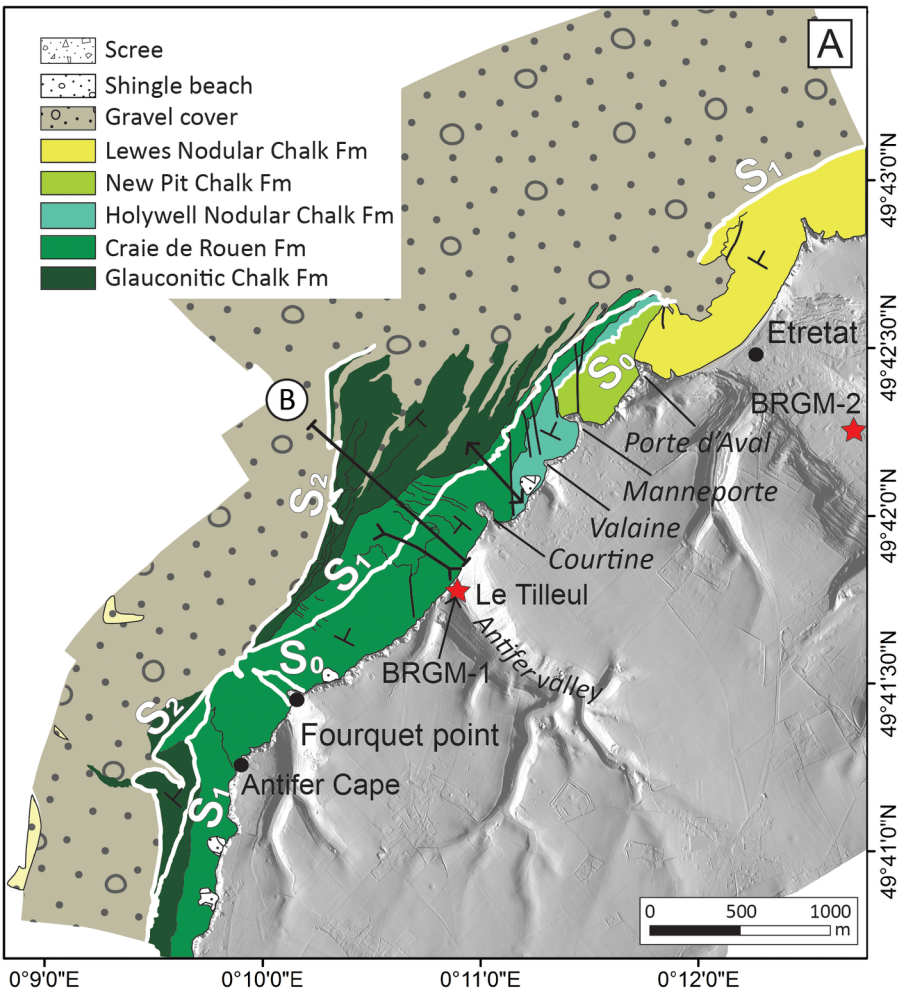


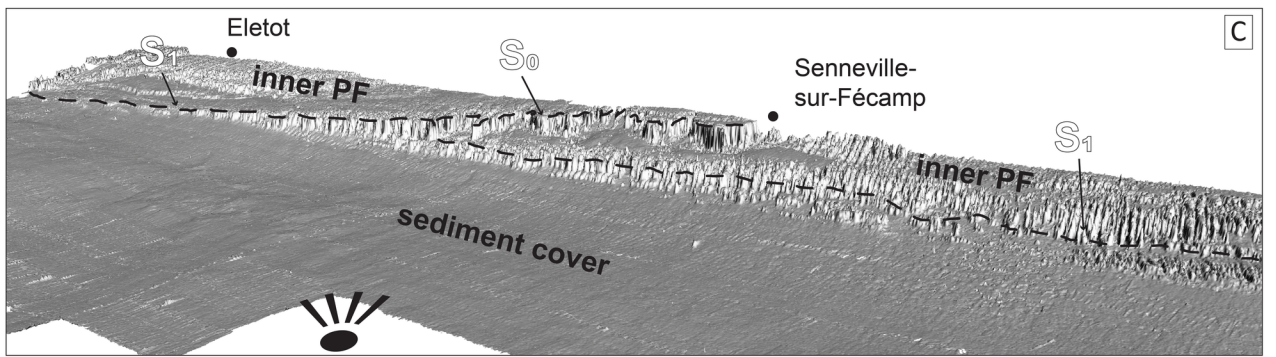
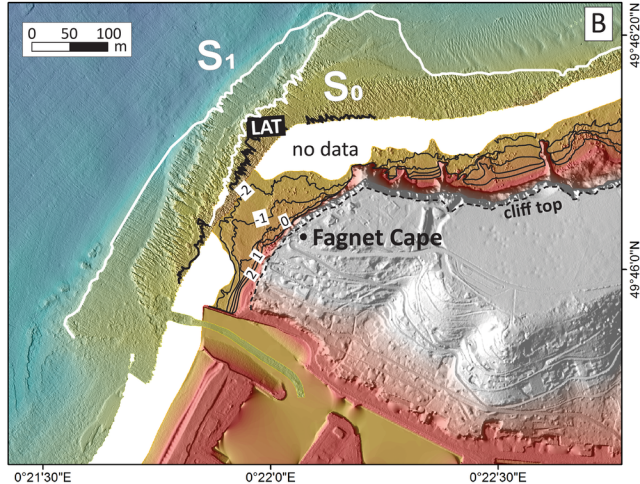
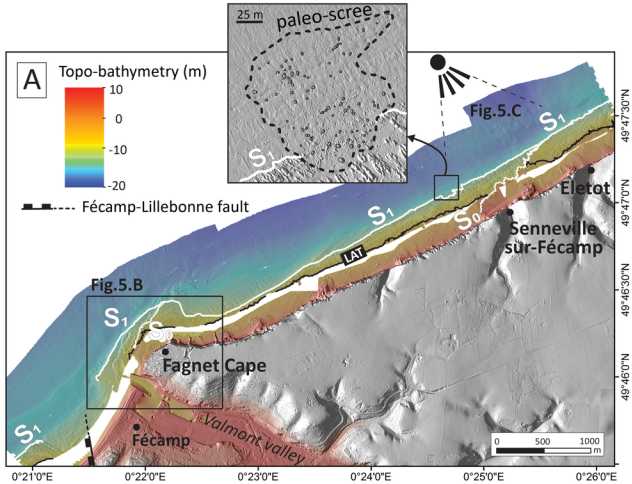
B

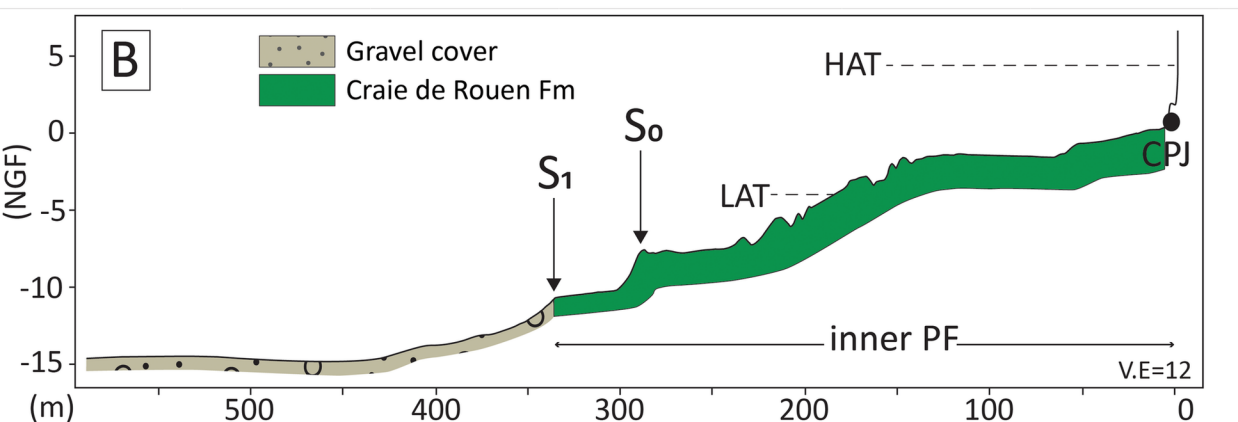
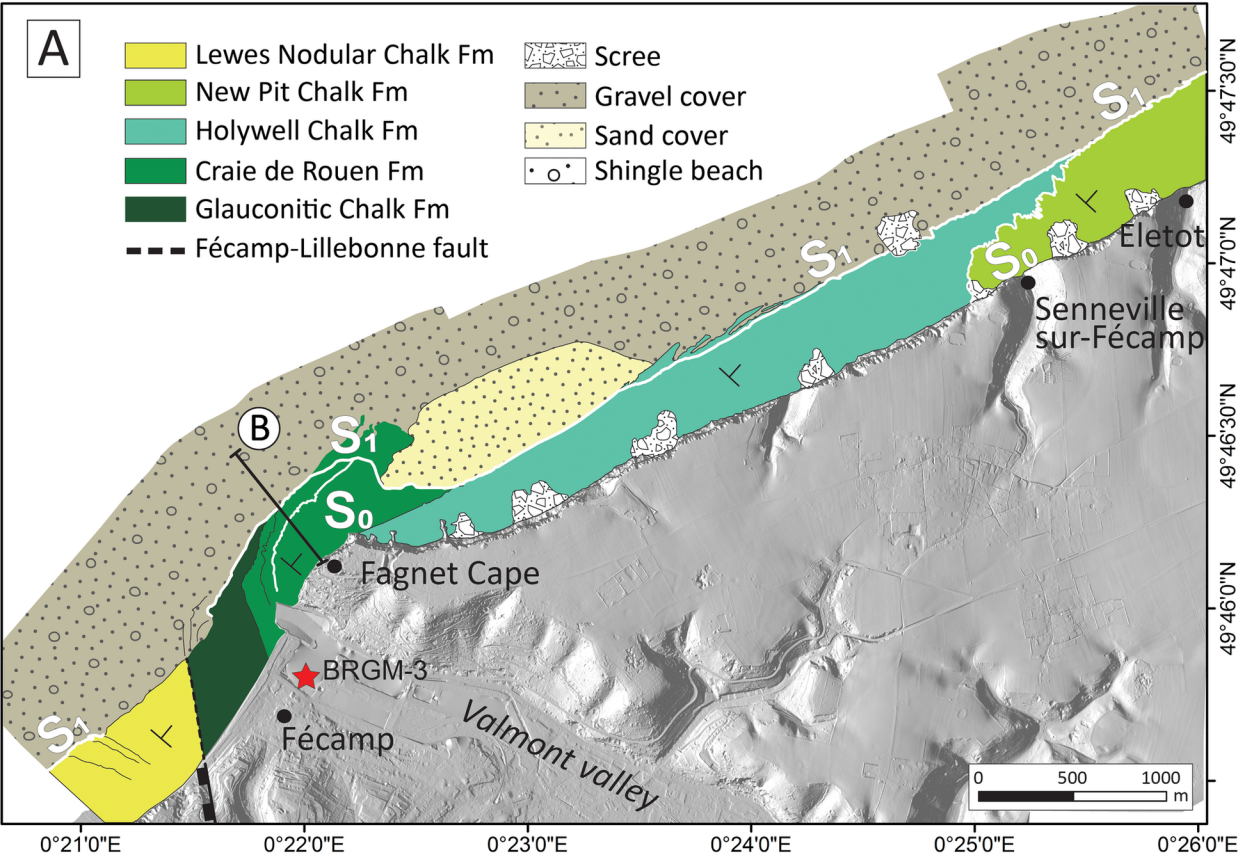


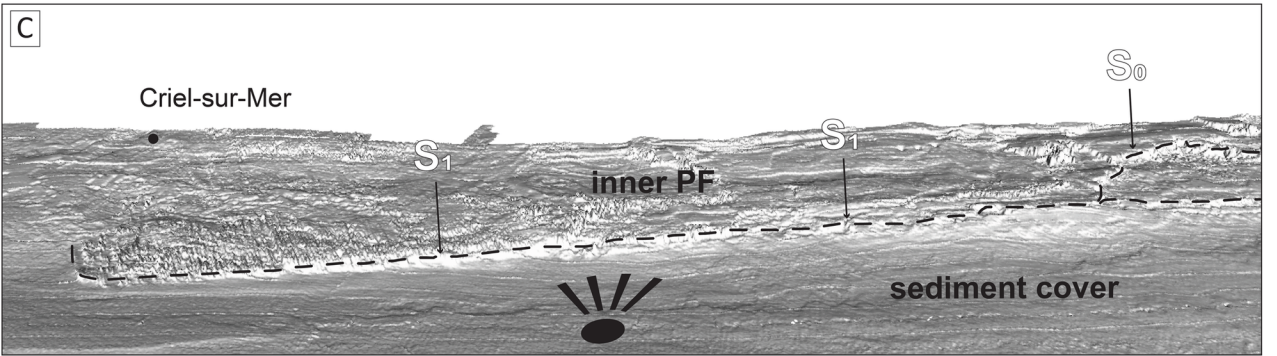
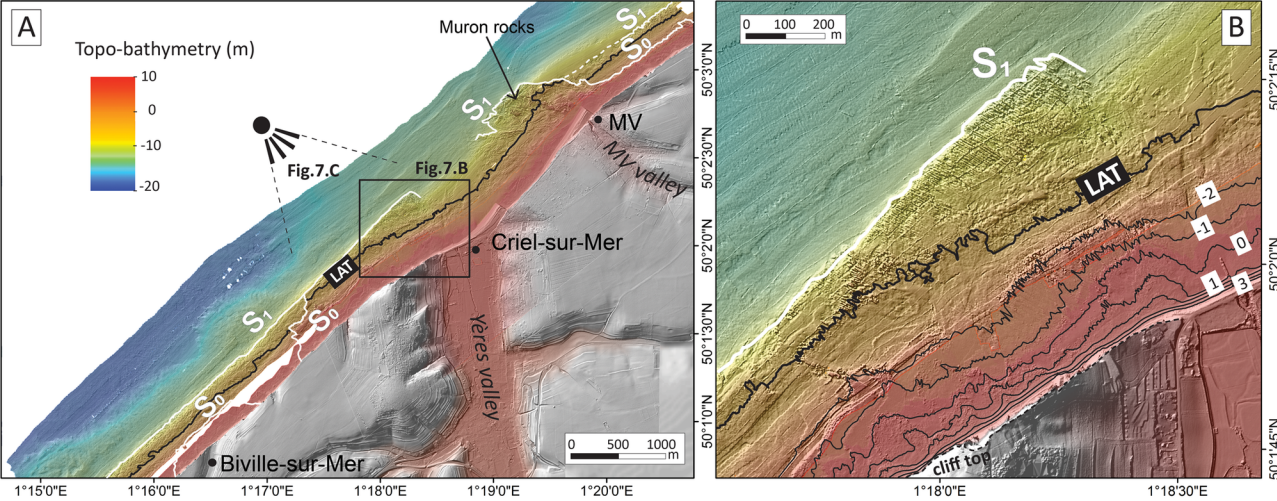
System	Stage	Formations in Sussex	Key markers	Additional features in Normandy	Formations in Normandy	Local Formations used in Normandy (Lasseur, 2007)	Local Formations used in Hauts de France (Amedro and Robaszynski, 2000)				
Upper Cretaceous	Campanian	Culver Chalk	Castle Hill marl	no outcrops							
		Newhaven Chalk	Telscombe marls					Quiberville HG	Newhaven Chalk	craie de Vasterival	
			Meeching marls								
			Peacehaven marl								
			Old Nore marl								
	Friar's bay marl										
	Santonian	Seaford Chalk	Brighton marl					St valery HGs	Seaford Chalk	craie de Veulettes	Caffiers
			Buckle marl								
			Exceat flint								
			Whitaker's three inch flint								
			Bedwell's columnar flint								
	Coniacian	Lewes Nodular Chalk	Seven Sisters flint band	Etretat Complex	Lewes Nodular Chalk	craie de Saint Pierre en Port	craie de Petites Dalles				
			Belle Tout marls								
			Shoreham marls								
			Light Point HGs								
			Beeding HGs								
			Hope Gap HGs								
			Cliffe HG								
			Navigation marl								
			Lewes marl								
			Bridgewick marl								
	Turonian	New Pit Chalk	Cabum marl	Mers HGs	New Pit Chalk	craie de Senneville	Guet				
			Southerham marl								
Glynde marl											
New Pit marls			3 Tilleul HGs					New Pit Chalk	craie du Val st Nicolas	Mottelettes	
Malling street marl											
Glyndebourne flints											
Gun Gardens main marl											
Cenomanian	Holywell Nodular Chalk	Meads marls	Antifer HGs	Holywell Nodular Chalk	craie du Cap Fagnet	Grand Blanc-Nez					
		Plenus marl									
	Zig Zag Chalk	West Melbury Marly Chalk				Craie de Rouen	craie de Rouen	Escalles			
				Tenuis limestone				Cran			
								Petit Blanc-Nez			
		Glauconitic marl		Glauconitic Chalk	craie glauconieuse	Strouanne					

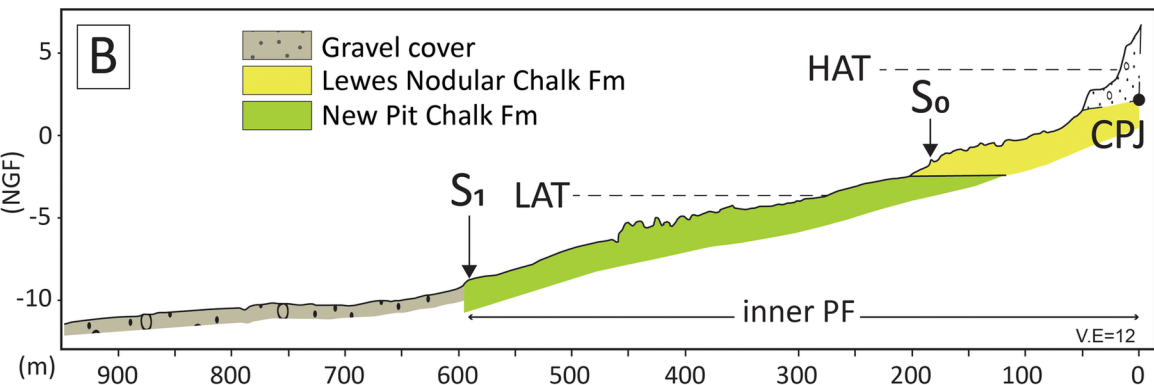
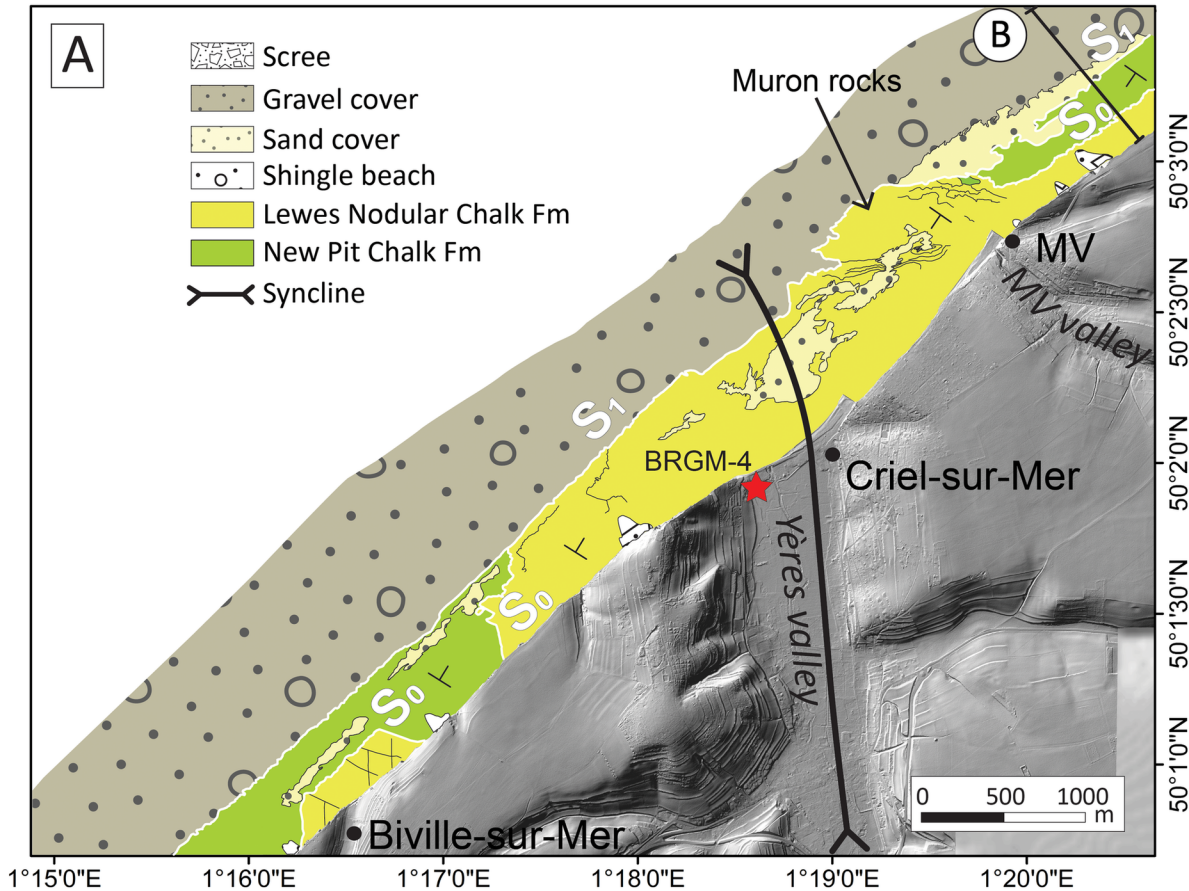


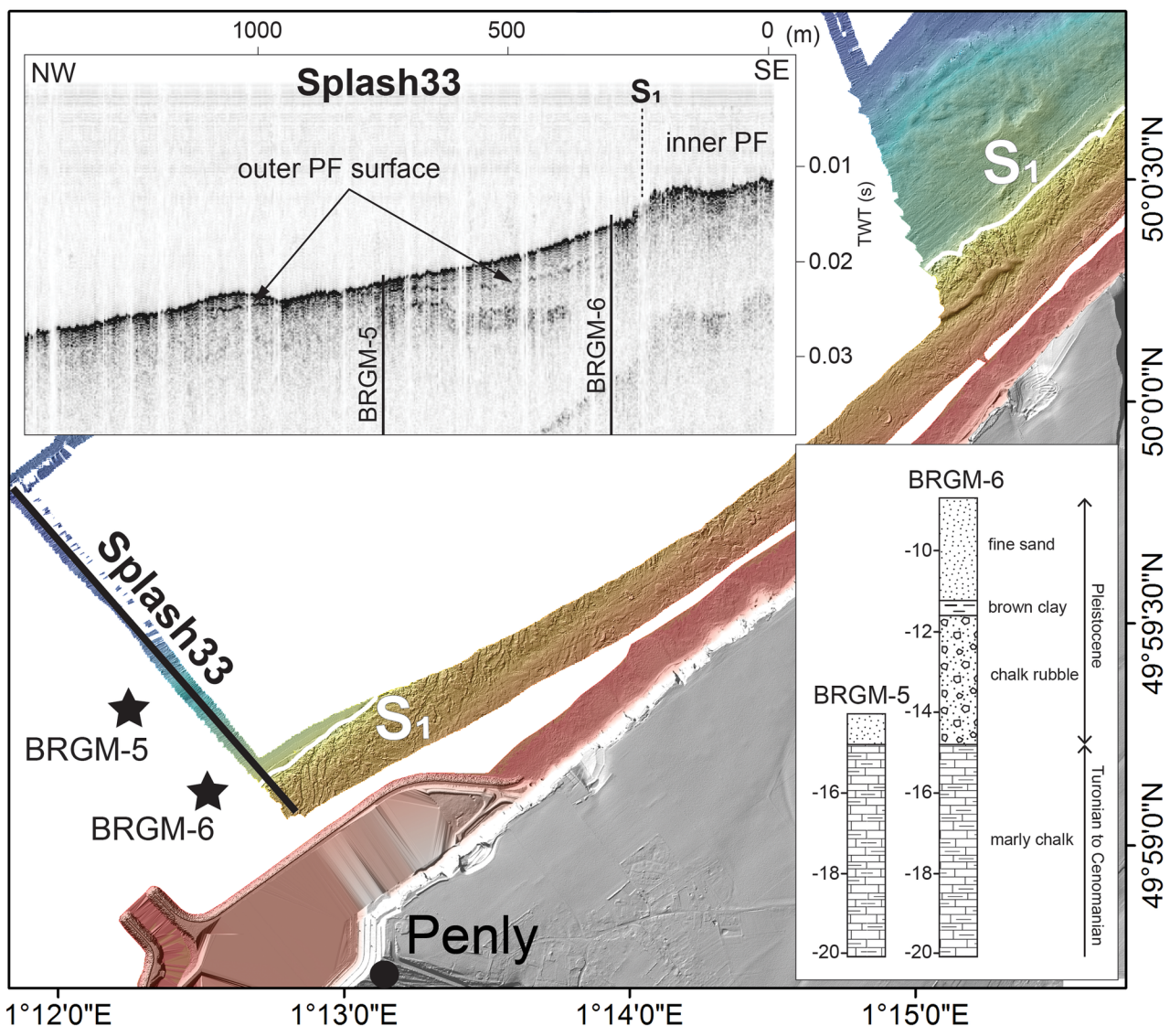


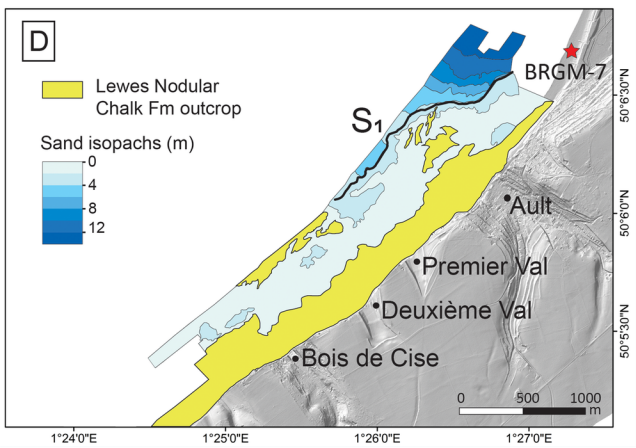
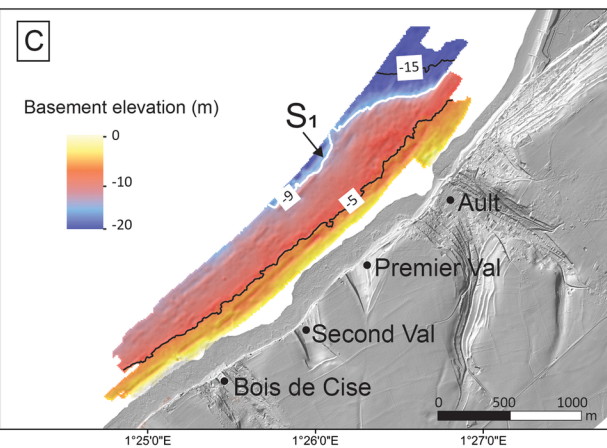
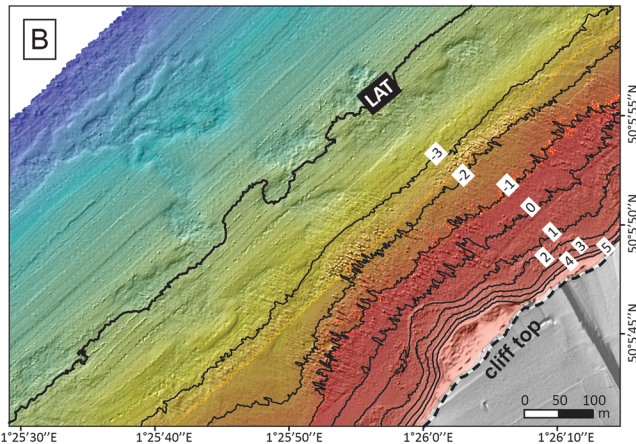
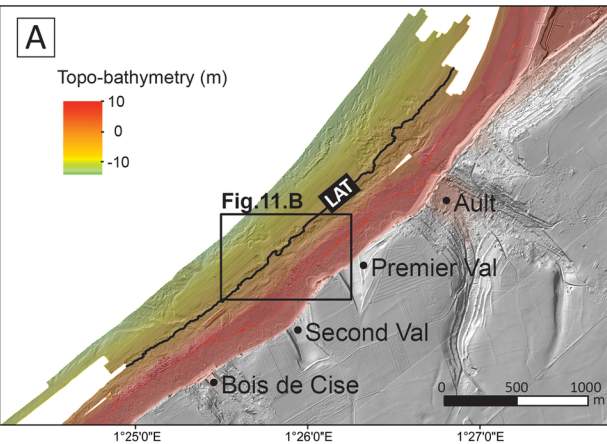




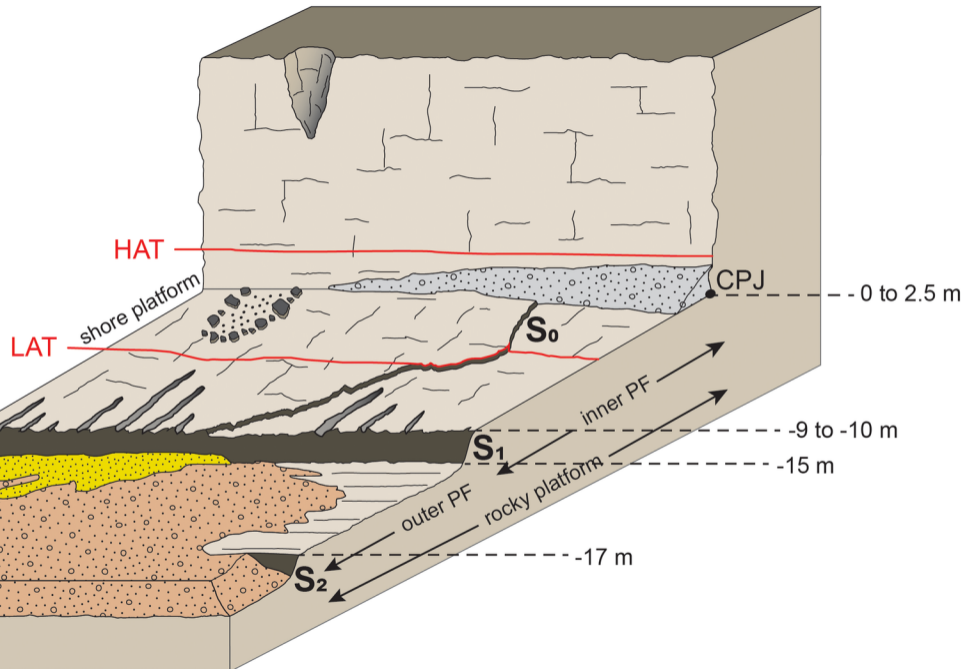


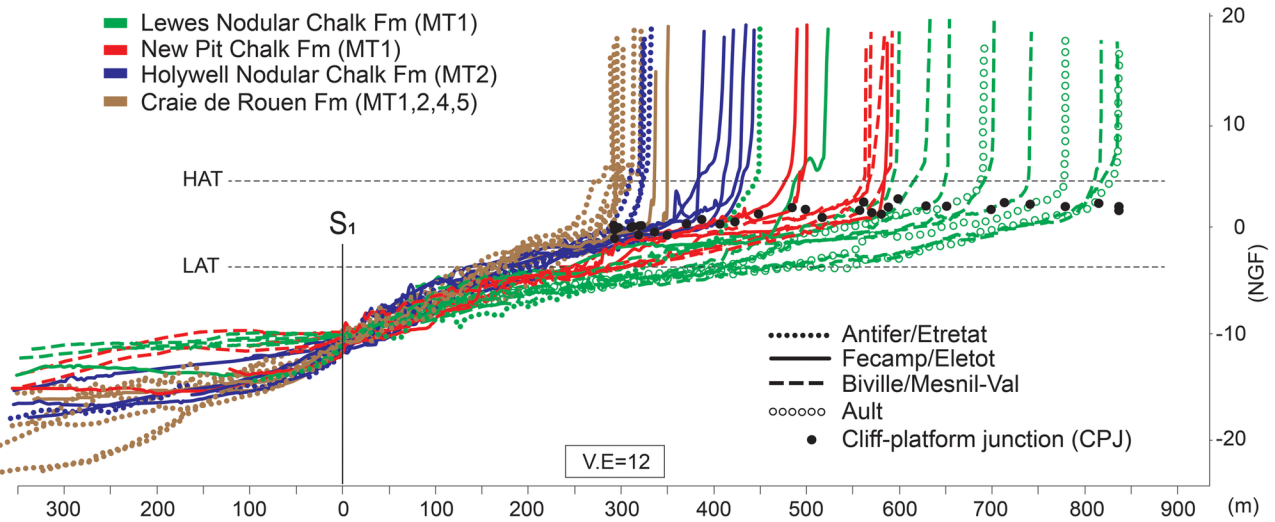


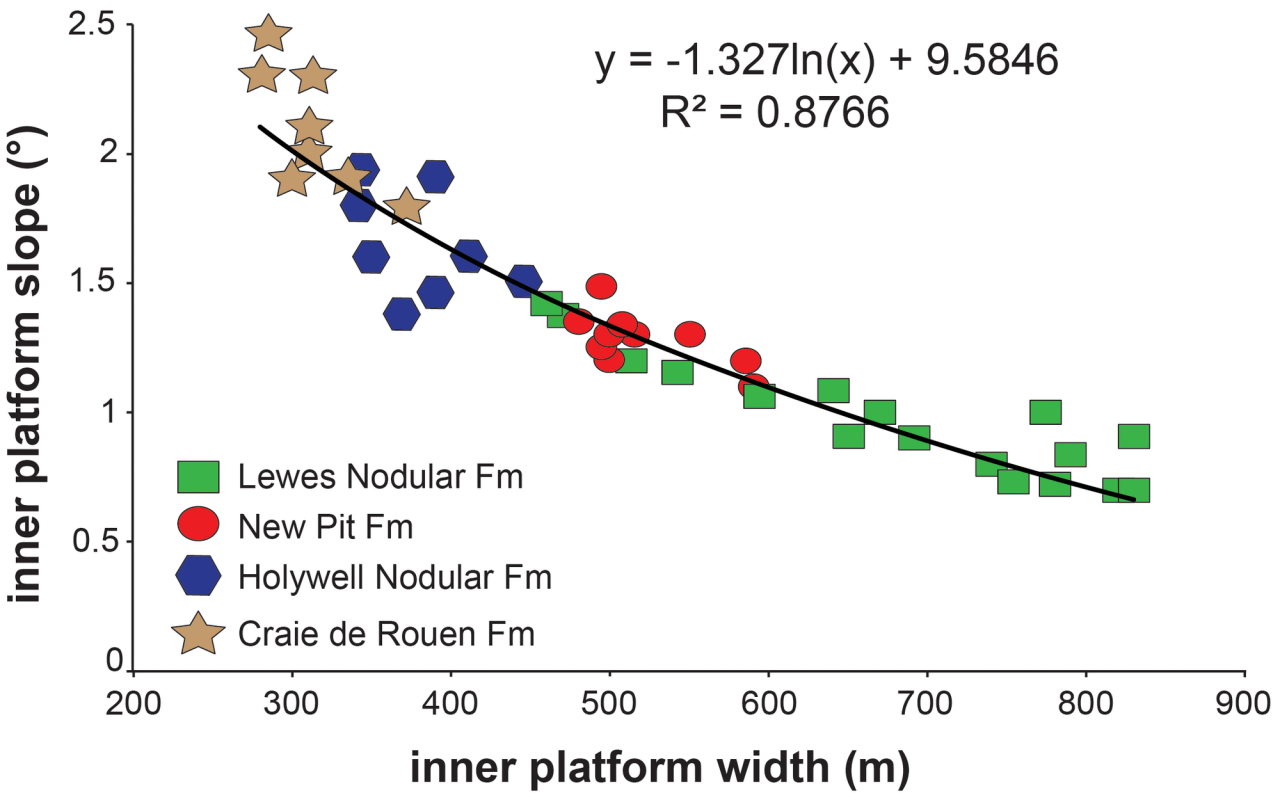


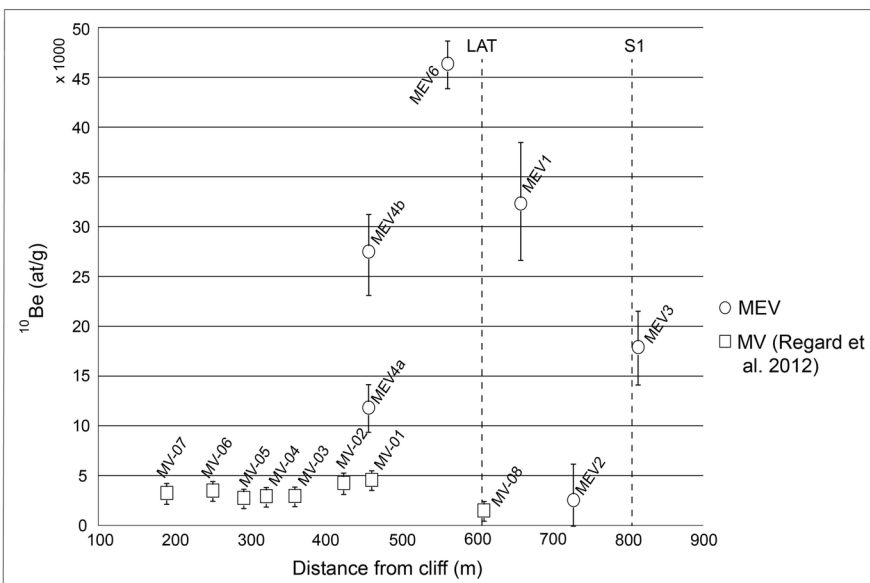
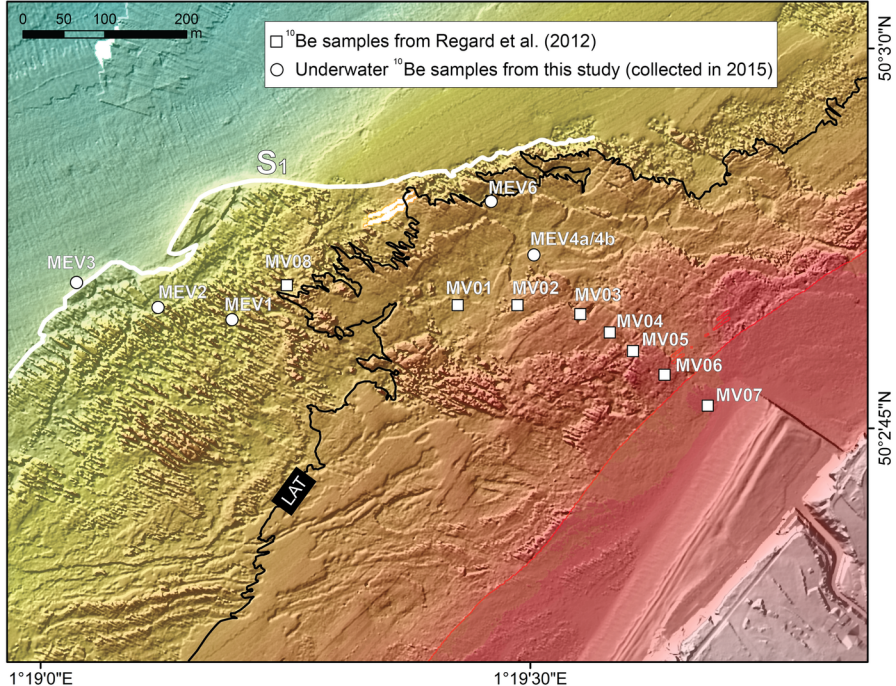


- shingle beach
- gravel cover
- sand deposits
- chalk

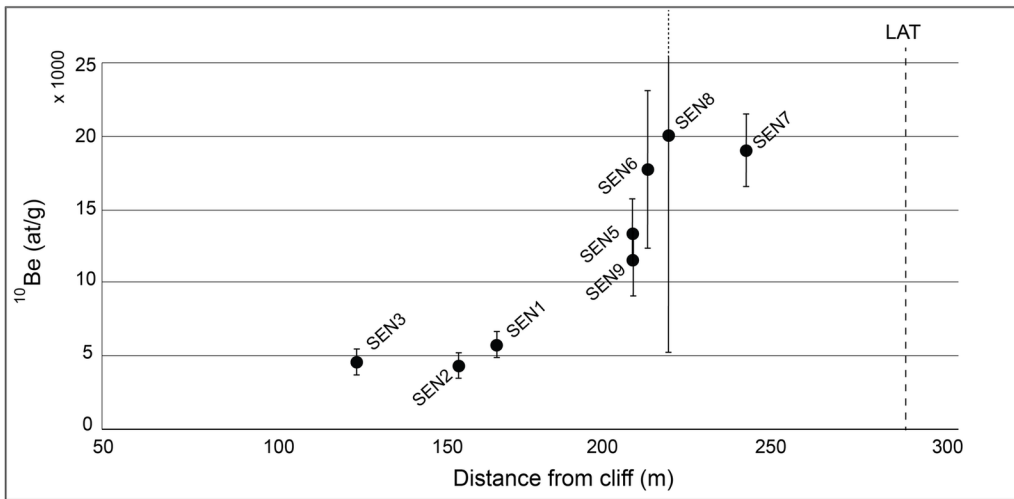
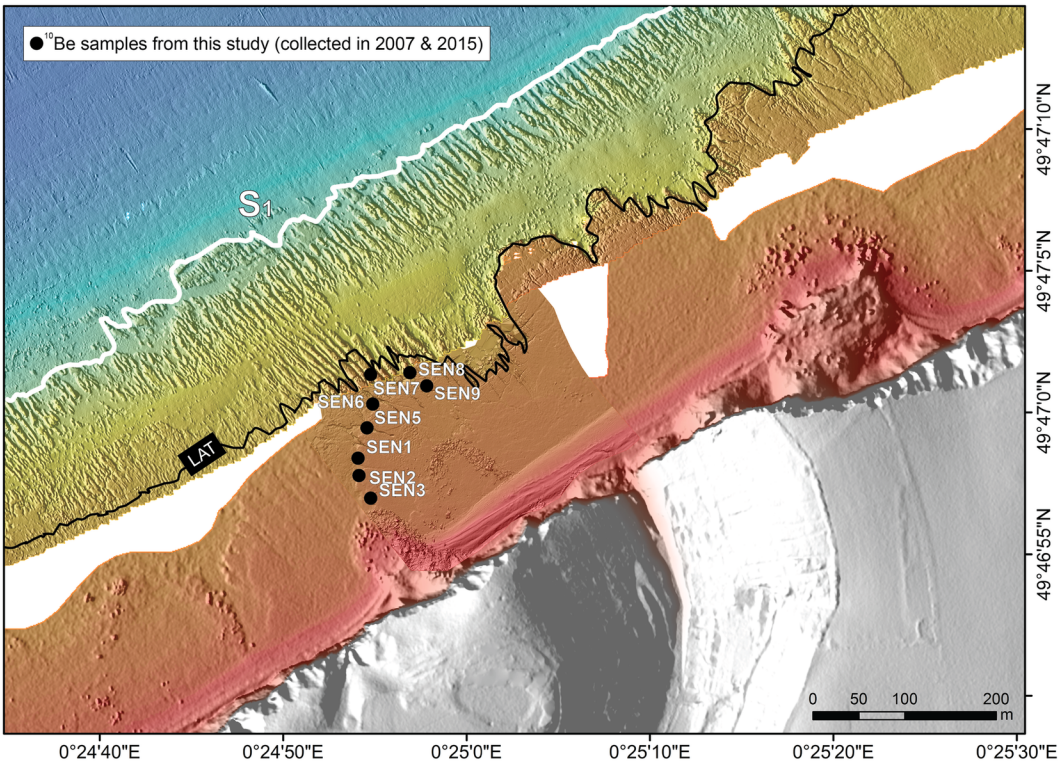


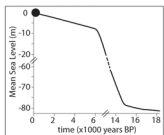




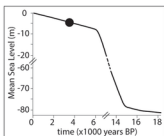
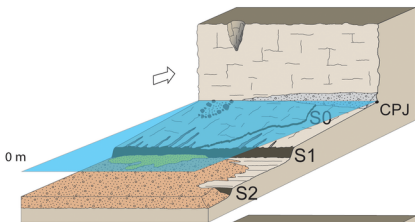


● ^{10}Be samples from this study (collected in 2007 & 2015)

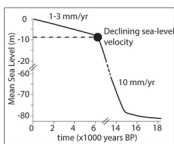
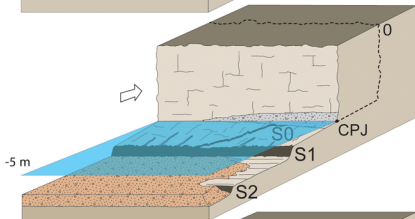




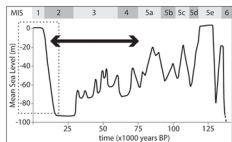
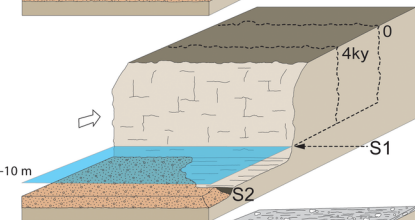
a. present day



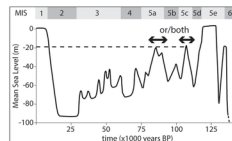
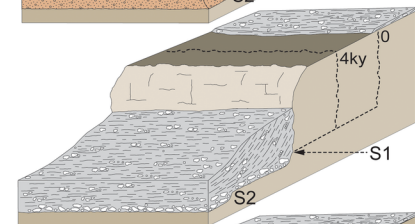
b. 4 ky



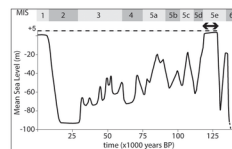
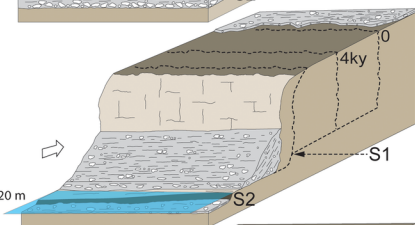
c. 6.5 ky



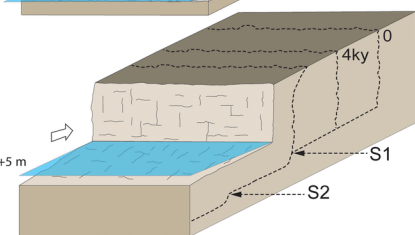
d. MIS2 → MIS4

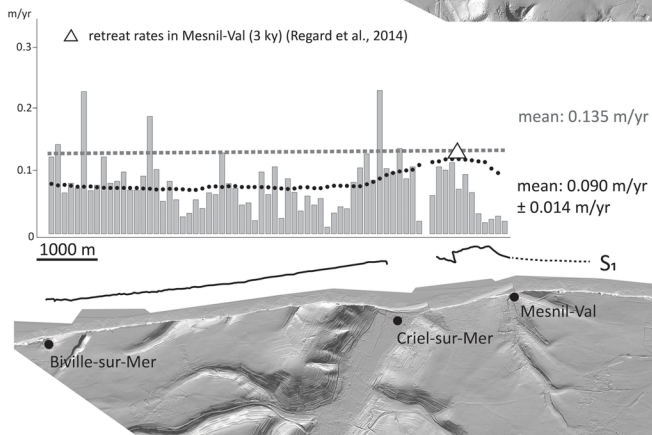
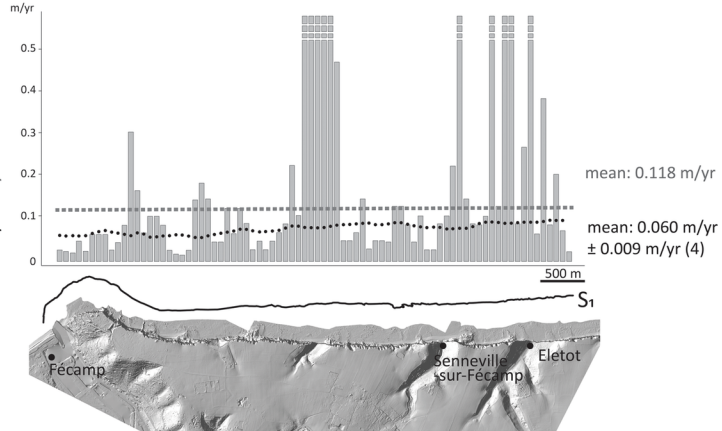
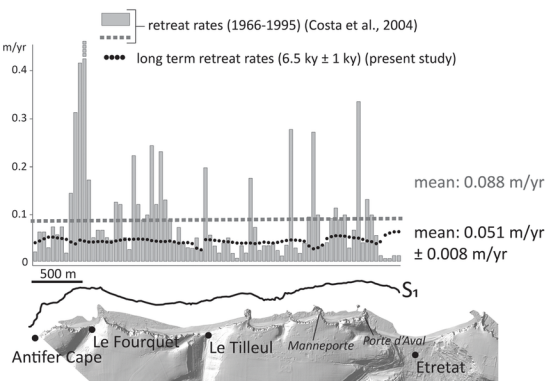


e. MIS5a or/and MIS5c



f. MIS5e





Location	Stage	Local formation name	Uniform formation name	D.I (a.u)	φ (%)	K (mD)	UCS (MPa)	Microtextures	Ref.
Quiberville FR	Campanian	Newhaven Chalk Fm	Newhaven Chalk Fm	-	36	-	3	-	[1]
Newhaven UK	Campanian	Newhaven Chalk Fm	Newhaven Chalk Fm	2	35.5	2.35	-	MT1	[2]
Coquelles Quarry FR	Santonian	Caffier Fm	Seaford Chalk Fm	1	42.9	5.83	5	MT1	[2]
Seven Sister UK	Coniacien	White Chalk group	Seaford Chalk Fm	1.5	40.2	3.1	4	MT1	[2]
Bois de Cise FR	Coniacien	Seaford Chalk Fm	Seaford Chalk Fm	-	46	-	3	-	[1]
Dieppe FR	Coniacien	Seaford Chalk Fm	Seaford Chalk Fm	-	34	-	1	-	[1]
Etretat FR	Coniacien	Craie de St-Pierre en Port	Lewes Nodular Chalk Fm	2	33.8	13.3	3	MT1	[2]
Bois de Cise FR	Coniacien	Lewes Nodular Chalk Fm	Lewes Nodular Chalk Fm	-	41	20	4	-	[1]
Mimoyecques Quarry FR	Turonian	Guet Fm	Lewes Nodular Chalk Fm	1	39.7	3.67	8	MT1	[2]
Mimoyecques Quarry FR	Turonian	Guet Fm	Lewes Nodular Chalk Fm	1	43.6	4.32	4	MT1	[2]
Eletot FR	Turonian	Lewes Nodular Chalk Fm	Lewes Nodular Chalk Fm	-	33	-	4	MT1	[1]
Birling Gap UK	Turonian	New Pit Chalk Fm	New Pit Chalk Fm	1	37.8	3.09	5	MT1	[2]
Senneville-sur-Fecamp FR	Turonian	Craie de Senneville	New Pit Chalk Fm	1	36.4	1.32	12	MT1	[2]
Senneville-sur-Fecamp FR	Turonian	Craie de Senneville	New Pit Chalk Fm	1.5	40.4	2.68	10	MT1	[2]
Eastbourne UK	Turonian	Holywell Nodular Chalk Fm	Holywell Nodular Chalk Fm	5	14.5	0.25	31	MT2	[2]
Saint Martin en Campagne FR	Turonian	Holywell Nodular Chalk Fm	Holywell Nodular Chalk Fm	6	23.8	0.44	21	MT2	[2]
Saint Martin en Campagne FR	Turonian	Holywell Nodular Chalk Fm	Holywell Nodular Chalk Fm	3.5	33	0.48	-	MT2	[2]
Saint Martin en Campagne FR	Turonian	Holywell Nodular Chalk Fm	Holywell Nodular Chalk Fm	3	25.4	0.4	19	MT2	[2]
Cap Blanc Nez FR	Turonian	Grand Blanc Nez Fm	Holywell Nodular Chalk Fm	4.5	20.7	0.19	-	MT2	[2]
Cap Blanc Nez FR	Turonian	Grand Blanc Nez Fm	Holywell Nodular Chalk Fm	3	17.6	0.4	20	MT2	[2]
Eastbourne UK	Cenomanian	Zig-Zag Fm	Craie de Rouen	6	14.2	0.06	35	MT5	[2]
Port of Antifer FR	Cenomanian	Craie de Rouen	Craie de Rouen	-	35	0.16	-	-	[1]
Cap Blanc Nez FR	Cenomanian	Escalles Fm	Craie de Rouen	1.5	36.5	-	9	MT1	[2]
Cap Blanc Nez FR	Cenomanian	Escalles Fm	Craie de Rouen	1	35.7	0.67	7	MT1	[2]
Cap Blanc Nez FR	Cenomanian	Escalles Fm	Craie de Rouen	5	27.1	0.43	20	MT2	[2]
Cap Blanc Nez FR	Cenomanian	Escalles Fm	Craie de Rouen	2.5	25.6	0.36	11	MT2	[2]
Cap Blanc Nez FR	Cenomanian	Cran Fm	Craie de Rouen	3.5	26.2	0.33	15	MT2	[2]
Cap Blanc Nez FR	Cenomanian	Cran Fm	Craie de Rouen	4	23.2	0.08	15	MT4	[2]
Cap Blanc Nez FR	Cenomanian	Petit Blanc Nez Fm	Glaucconitic Chalk	4	22.1	0.08	27	MT4	[2]
Cap Blanc Nez FR	Cenomanian	Petit Blanc Nez Fm	Glaucconitic Chalk	4	24.8	0.04	15	MT4	[2]
Cap Blanc Nez FR	Cenomanian	Strouanne Fm	Glaucconitic Chalk	2.5	26	0.79	13	MT4	[2]
Cap Blanc Nez FR	Cenomanian	Strouanne Fm	Glaucconitic Chalk	3.5	20	0.11	24	MT4	[2]
Cap Blanc Nez FR	Cenomanian	Strouanne Fm	Glaucconitic Chalk	2.5	21.1	0.05	18	MT4	[2]

Sample name	distance from cliff (m)	Latitude (°)	Longitude (°)	Elevation (m, NGF)	Mass of pure flint dissolved (g)	Measured $^{10}\text{Be}/^9\text{Be}$	Uncertainty $^{10}\text{Be}/^9\text{Be}$ (%)	^{10}Be concentration (at/g)	+/- (at/g)
MEV3	814	50,0472	1,3171	-9,8	15,73	1,0660E-14	18,61	17908	3970
MEV2	728	50,0470	1,3185	-7,9	16,57	6,4840E-15	35,38	2545	3792
MEV1	658	50,046887	1,319811	-6,1	11,76	1,2405E-14	26,05	32316	8420
MV-08	635	50,0474	1,3208	-5,1	29,18	6,6921E-15	10,49	1504	642
MEV6	561	50,048441	1,323864	-4,0	22,46	3,4450E-14	6,15	46359	2854
MV-01	471	50,0462	1,3278	-4,2	29,92	1,1257E-14	6,50	4568	640
MEV4a	456	50,047669	1,324893	-3,9	19,27	1,43035E-14	11,93	11822	2793
MEV4b	456	50,047669	1,324893	-3,9	13,09	1,1911E-14	18,02	27490	4953
MV-02	416	50,0465	1,3273	-3,0	24,78	9,7594E-15	8,03	4270	803
MV-03	353	50,0467	1,3267	-2,1	30,93	9,0181E-15	9,10	2950	667
MV-04	313	50,0469	1,3264	-1,8	31,73	9,1295E-15	8,28	2948	617
MV-05	279	50,0476	1,3260	-1,6	30,79	8,7347E-15	7,79	2768	595
MV-06	231	50,0471	1,3250	-0,9	29,91	9,7071E-15	6,86	3503	604
MV-07	167	50,0476	1,3213	-0,7	30,82	9,4628E-15	11,95	3255	844

Sample name	distance from cliff (m)	Latitude (°)	Longitude (°)	Elevation (m, NGF)	Mass of pure flint dissolved (g)	Measured $^{10}\text{Be}/^9\text{Be}$	Uncertainty $^{10}\text{Be}/^9\text{Be}$ (%)	^{10}Be concentration (at/g)	+/- (at/g)
SEN7	239	49,7835	0,4150	-2,7	29,56	1,9822E-14	16,50	18821	3394
SEN8	216	49,7834	0,4155	-2,0	6,91	2,2541E-14	36,27	19790	15547
SEN6	210	49,7833	0,4151	-1,7	11,79	8,3632E-15	37,82	17554	8243
SEN9	206	49,7834	0,4156	-1,1	22,69	1,3314E-14	25,28	11288	4879
SEN5	206	49,7830	0,4150	-0,9	14,78	7,9670E-15	25,85	13182	4311
SEN1	166	49,7826	0,4149	-0,8	31,85	1,3156E-14	9,54	5497	524
SEN2	155	49,7825	0,4149	-0,4	32,49	1,1088E-14	11,37	4096	466
SEN3	125	49,7823	0,4150	0,2	30,60	1,1125E-14	14,91	4365	651