



HAL
open science

K-mer analysis of blaACT genes for fast and reliable delineation of members of the Enterobacter cloacae complex

François Gravey, V. Cattoir, R. Beyrouthy, R. Bonnet, S. Le Hello, Fabien Guérin

► **To cite this version:**

François Gravey, V. Cattoir, R. Beyrouthy, R. Bonnet, S. Le Hello, et al.. K-mer analysis of blaACT genes for fast and reliable delineation of members of the Enterobacter cloacae complex. 29th European Congress of Clinical Microbiology & Infectious Diseases, Apr 2019, Amsterdam, Netherlands. , 2019. hal-02406843

HAL Id: hal-02406843

<https://normandie-univ.hal.science/hal-02406843>

Submitted on 12 Dec 2019

HAL is a multi-disciplinary open access archive for the deposit and dissemination of scientific research documents, whether they are published or not. The documents may come from teaching and research institutions in France or abroad, or from public or private research centers.

L'archive ouverte pluridisciplinaire **HAL**, est destinée au dépôt et à la diffusion de documents scientifiques de niveau recherche, publiés ou non, émanant des établissements d'enseignement et de recherche français ou étrangers, des laboratoires publics ou privés.



Distributed under a Creative Commons Attribution - NonCommercial 4.0 International License

F. Gravey¹, V. Cattoir^{2,3}, R. Beyrouthy⁴, R. Bonnet⁴, S. Le Hello^{1,5}, F. Guérin⁶

¹Université de Caen, GRAM 2.0, EA2656, Caen, France, ²Université de Rennes 1, Inserm U1230, Rennes, France, ³CHU de Rennes, Service de Bactériologie-Hygiène Hospitalière, Rennes, France, ⁴UCHU de Clermont-Ferrand, Service de Bactériologie-Parasitologie-Mycologie, Clermont-Fd, France, ⁵UCHU de Caen, Service d'Hygiène Hospitalière, Caen, France, ⁶UCHU de Caen, Service de Microbiologie, Caen, France.

Background

For the last decade, *Enterobacter cloacae* complex (ECC) has been divided in 13 genetic clusters (C-1 to C-13) on the basis of *hsp60* sequencing (1). Distinction of each cluster is of clinical relevance since ECC is a complex cluster of species and subspecies having different abilities to give hospital-acquired infections and outbreaks.

More recently, this classification has been extended by using a phylogenetic approach using whole-genome sequencing data (groups A to R) (2).

The aim of this study was to investigate a one-gene-based K-mer approach for the fast identification of the different ECC clusters.

Material and methods

- ✓ All the available ECC genomes (n = 1,307) in the patric database were downloaded and included in the *in silico* analysis.
- ✓ The correct species identification and the absence of contaminant were checked using the rMLST data base provided by PubMLST.
- ✓ The *hsp60*, *rpoB* and *bla*_{ACT} genes were extracted from all the genomes and clustered using cd-hit with a 99% identical cutoff. A distance matrix between all the genomes based on the K-mer content was calculated using the Mash software, and a neighbor-joining tree (NJT) was constructed using the neighbor software available in the PHYLIP package.
- ✓ Tree and molecular typing for all the strains were represented using the iTOL website (<https://itol.embl.de>).

Results

- ✓ The K-mer approach provided a distance matrix of >1,000 genomes in <1 hour on a personal laptop. Clusters recovered in the NJT were overall in *ad equation* with the *hsp60* clustering method for C-11, C-2, C-5 and C-7. Furthermore, *hsp60* and *rpoB* clustering method provided classification errors owing to its weak diversity and especially in C-4, C-6, C-8, C-9 and C-13.
- ✓ Consequently, *hsp60*- and *rpoB*-based clustering methods were not discriminant enough and led to cluster misidentification. By contrast, the diversity in *bla*_{ACT} sequences significantly improved the discrimination between the clusters and avoided missclusterization (Figure 1).
- ✓ So, we identified more than 86 specific typical sequences of every cluster or group defined by *hsp60* method or NJT (PPV 100%). Furthermore it allowed identifying some additional subgroups.

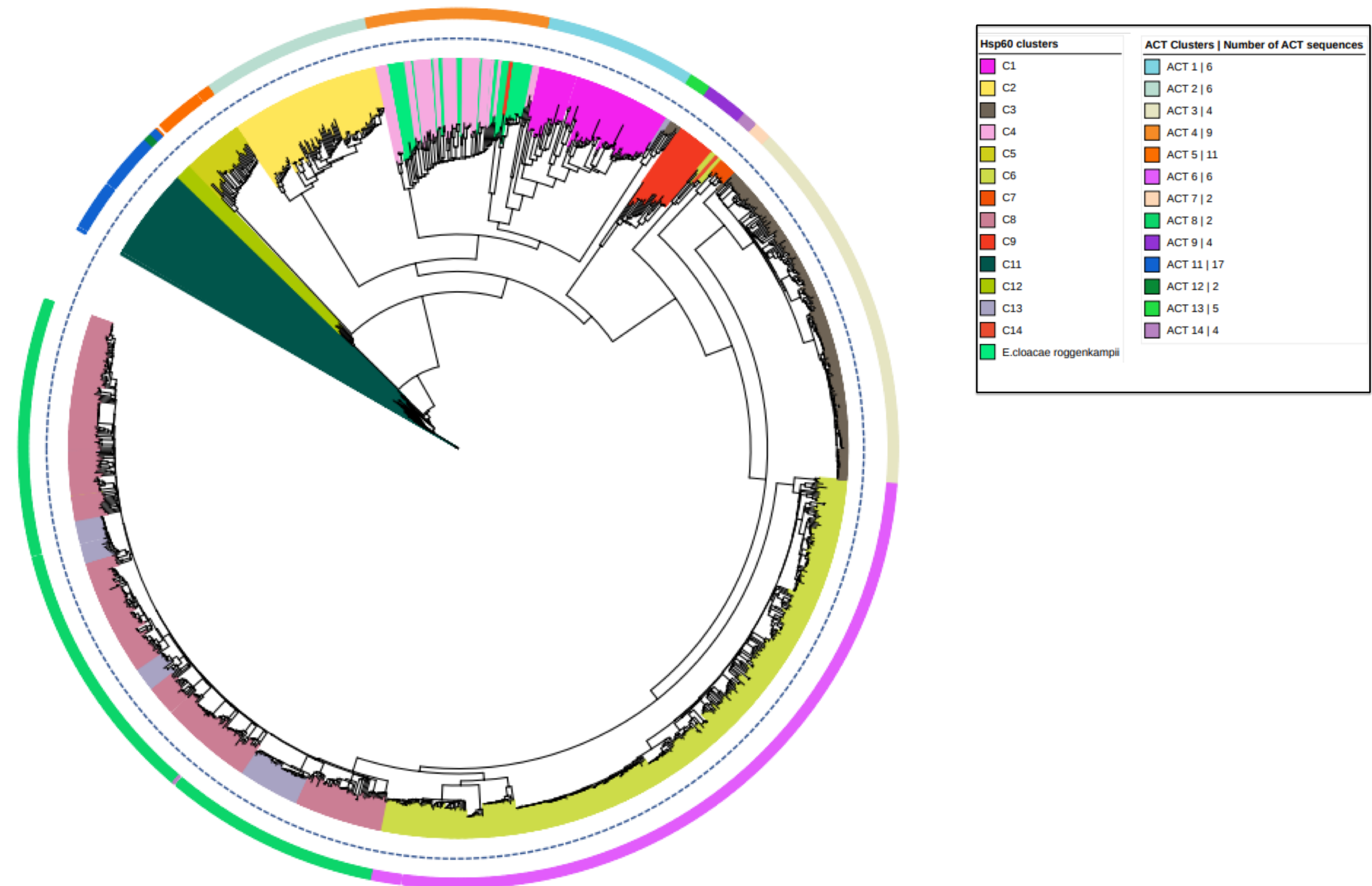


Figure 1 : Neighbour-joining tree based on K-mer composition determined using Mash software then created using PHYLIP package. Each clusters (1 to 14) is represented in a distinct colour in inner circle and ACT clusters (1 to 14) are also plotted in outer concentric circles.

Conclusions

- ***bla*_{ACT} K-mer analysis provides a fast alternative approach for a precise and high-throughput identification of ECC clusters. Other genes have been tested for further clustering analysis.**

References:

1. Hoffmann H, Roggenkamp A. Population genetics of the nomenclature species *Enterobacter cloacae*. Appl Environ Microbiol 2003, 69, 5306-18.
2. Chavda KD, Chen L, Fouts DE, Sutton G, Brinkac L, Jenkins SG, Bonomo RA, Adams MD, Kreiswirth BN. Comprehensive Genome Analysis of Carbapenemase-Producing *Enterobacter* spp.: New Insights into Phylogeny, Population Structure, and Resistance Mechanisms. MBio. 2016 Dec 13;7(6).
3. Sutton GG, Brinkac LM, Clarke TH, Fouts DE. *Enterobacter hormaechei* subsp. *hoffmannii* subsp. nov., *Enterobacter hormaechei* subsp. *xiangfangensis* comb. nov., *Enterobacter roggenkampii* sp. nov., and *Enterobacter muelleri* is a later heterotypic synonym of *Enterobacter asburiae* based on computational analysis of sequenced *Enterobacter* genomes. Version 2. F1000Res. 2018 May 1 [revised 2018 Jan 1];7:521..