



**HAL**  
open science

## **New 3-hit model of schizophrenia: behavioral and electrophysiological investigations**

Solenn Percelay, Valentine Bouet, Jean-Marie Billard, Thomas Freret, Michel Boulouard

► **To cite this version:**

Solenn Percelay, Valentine Bouet, Jean-Marie Billard, Thomas Freret, Michel Boulouard. New 3-hit model of schizophrenia: behavioral and electrophysiological investigations. 23ème journée de LARC, Sep 2019, Nantes, France. 10.4103/ipj.ipj\_30\_15 . hal-02363078

**HAL Id: hal-02363078**

**<https://normandie-univ.hal.science/hal-02363078>**

Submitted on 14 Nov 2019

**HAL** is a multi-disciplinary open access archive for the deposit and dissemination of scientific research documents, whether they are published or not. The documents may come from teaching and research institutions in France or abroad, or from public or private research centers.

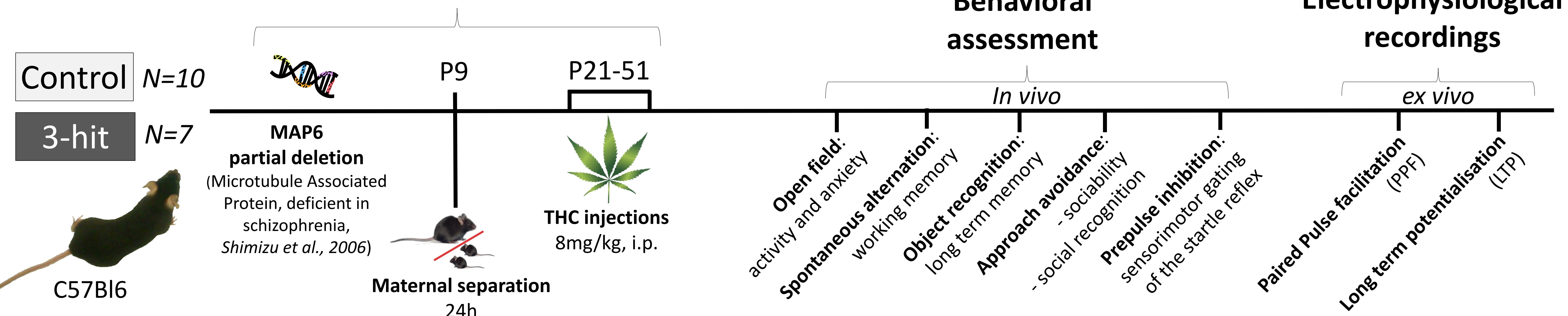
L'archive ouverte pluridisciplinaire **HAL**, est destinée au dépôt et à la diffusion de documents scientifiques de niveau recherche, publiés ou non, émanant des établissements d'enseignement et de recherche français ou étrangers, des laboratoires publics ou privés.



## INTRODUCTION

Schizophrenia is a disabling psychiatric disease found in approximately 1% of the population. Current antipsychotic drugs are only symptomatic and not satisfying for a part of symptoms and patients. In this context, for a better translation from treatment design to clinical efficiency, there is a need to refine preclinical models. We developed a new mouse model associating three factors (3-hit), which takes into account the multifactorial nature of the pathology (Ellenbroek et al., 2003). Positive, negative and cognitive-like symptoms of schizophrenia have been assessed respectively through a set of behavioral tests, and functional properties and plasticity of hippocampal networks were assessed *ex vivo* via electrophysiological recordings in slice preparation.

### Factors

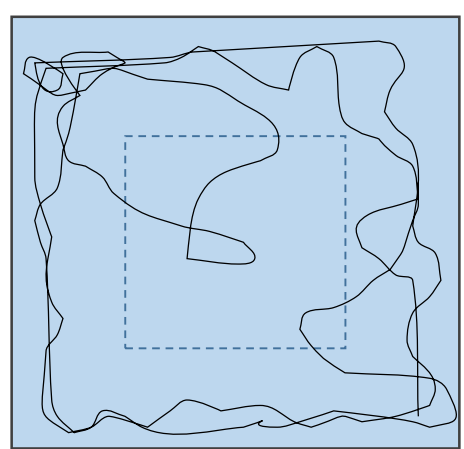


## Behavioral assessment

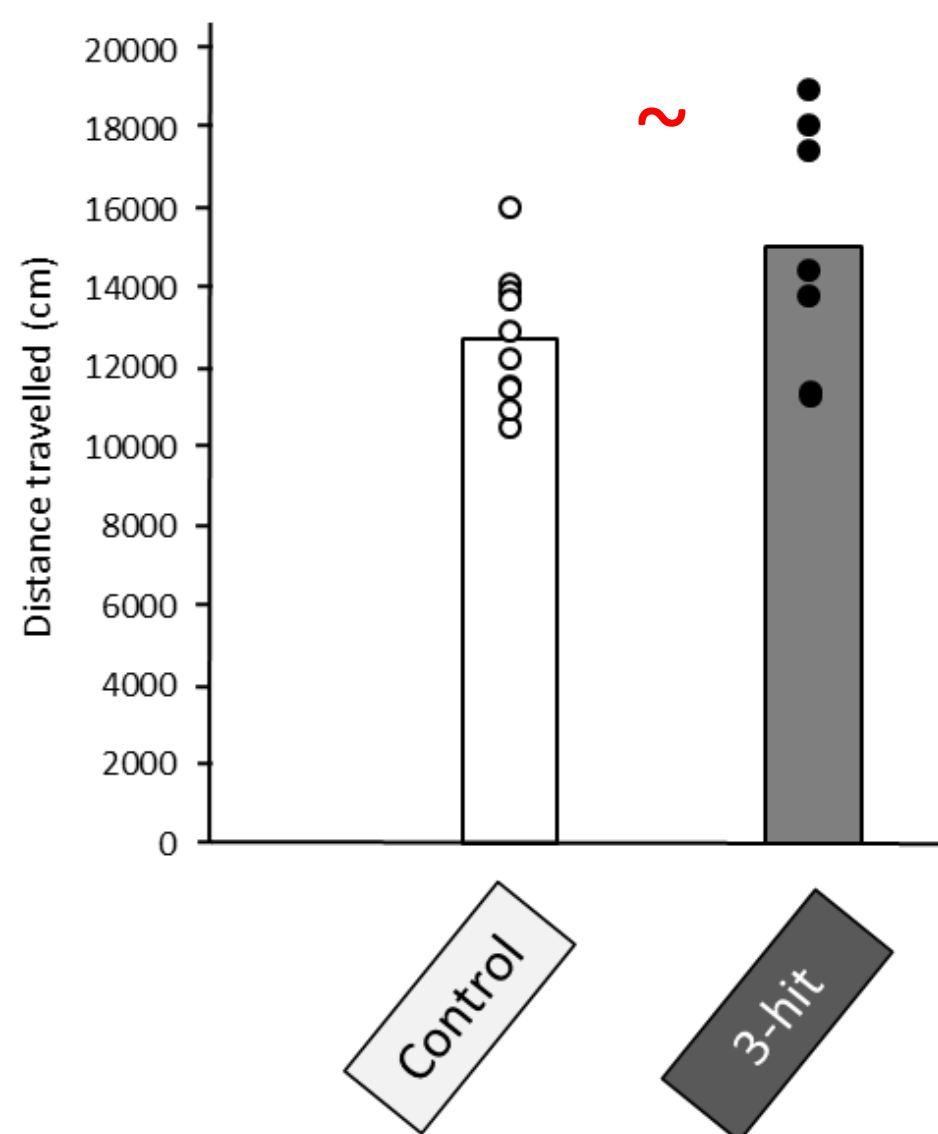
## RESULTS

## Electrophysiological recordings

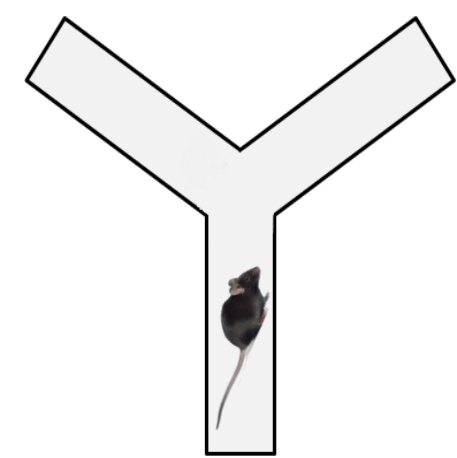
### Open Field



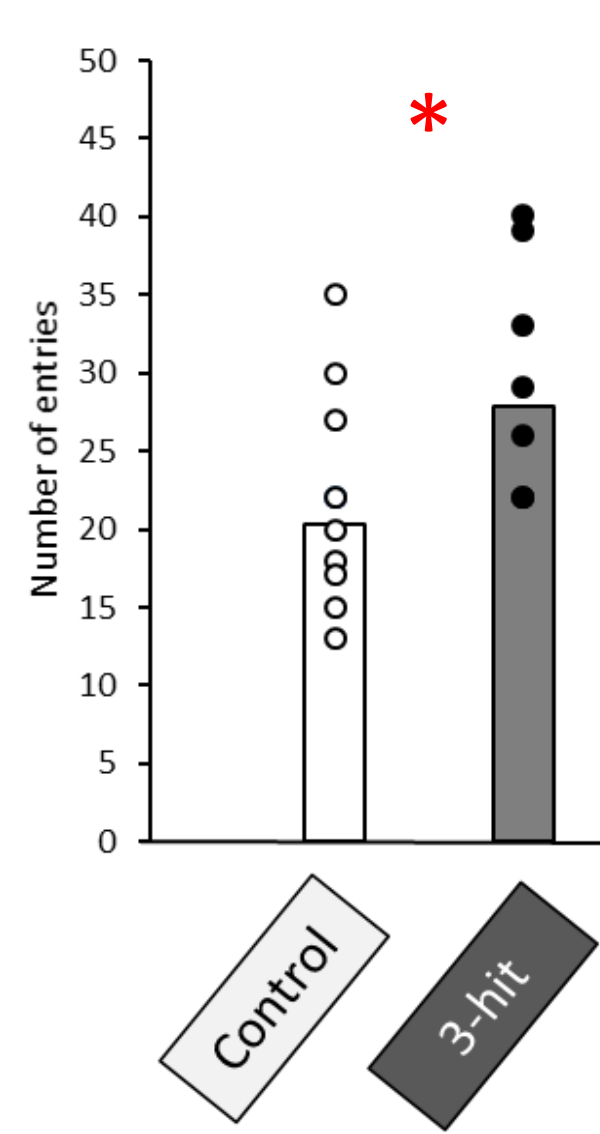
Open field test



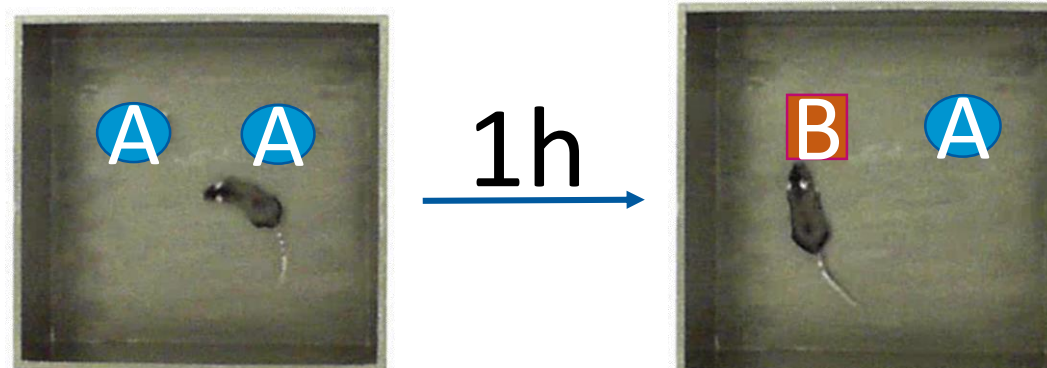
### Spontaneous alternation



Y maze



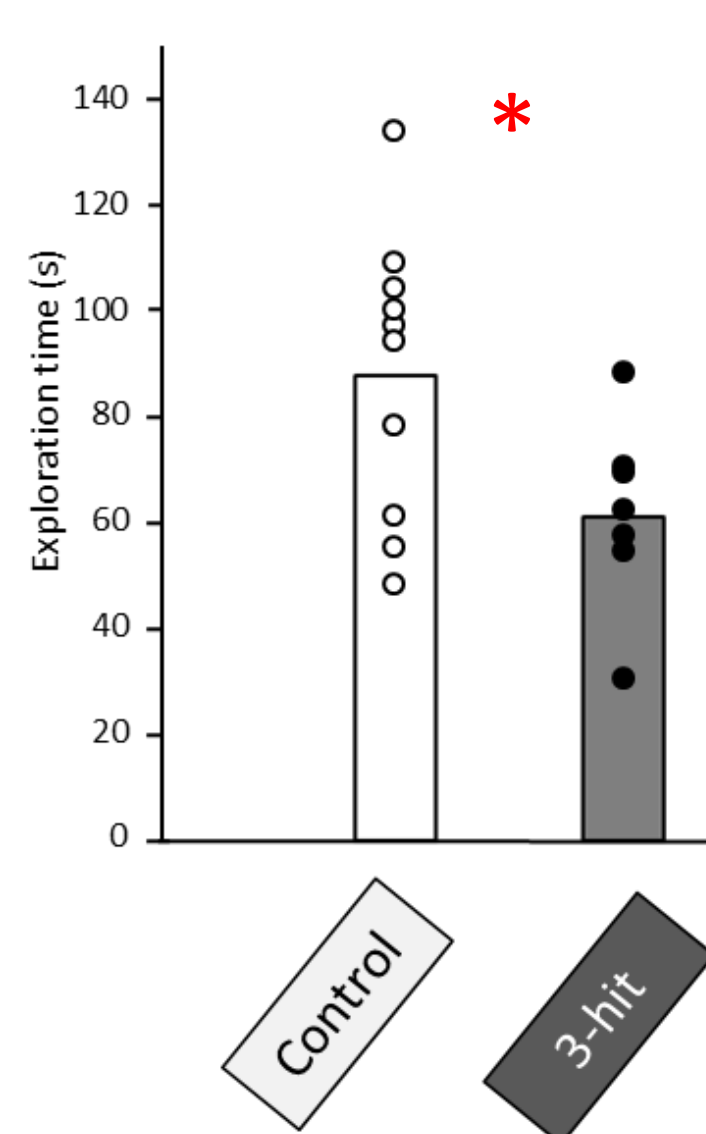
### Object recognition



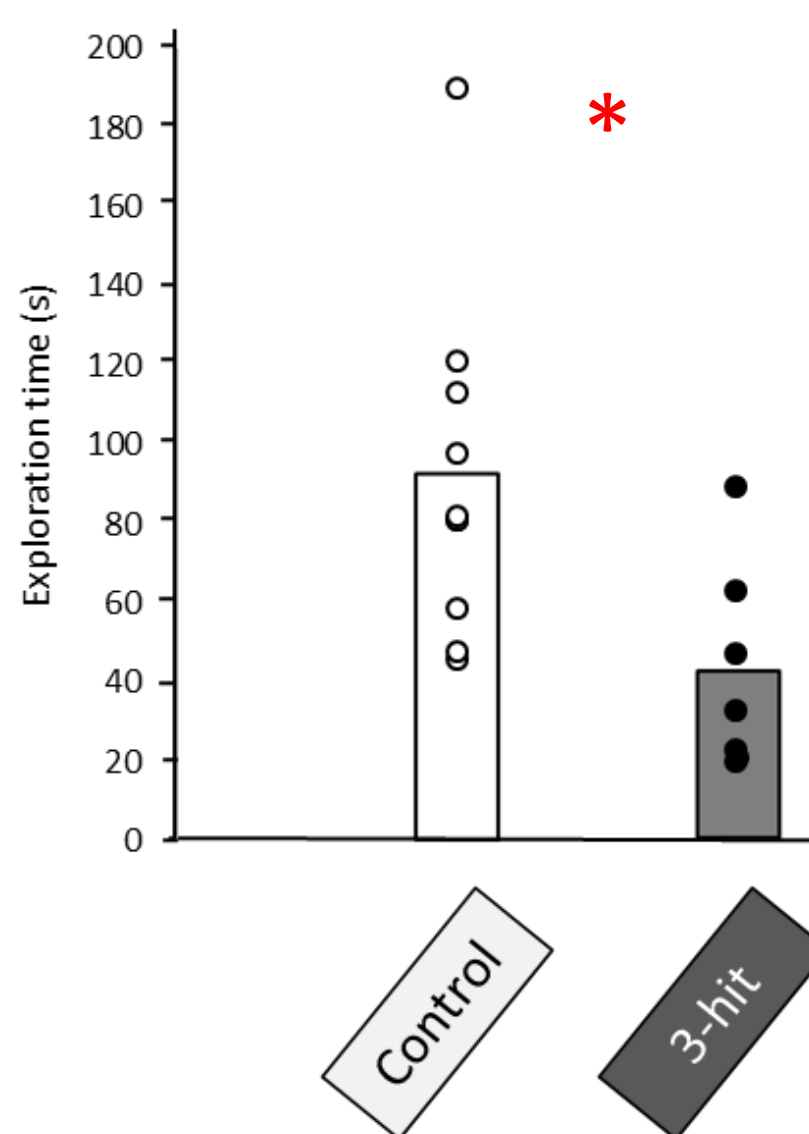
Acquisition

Retention

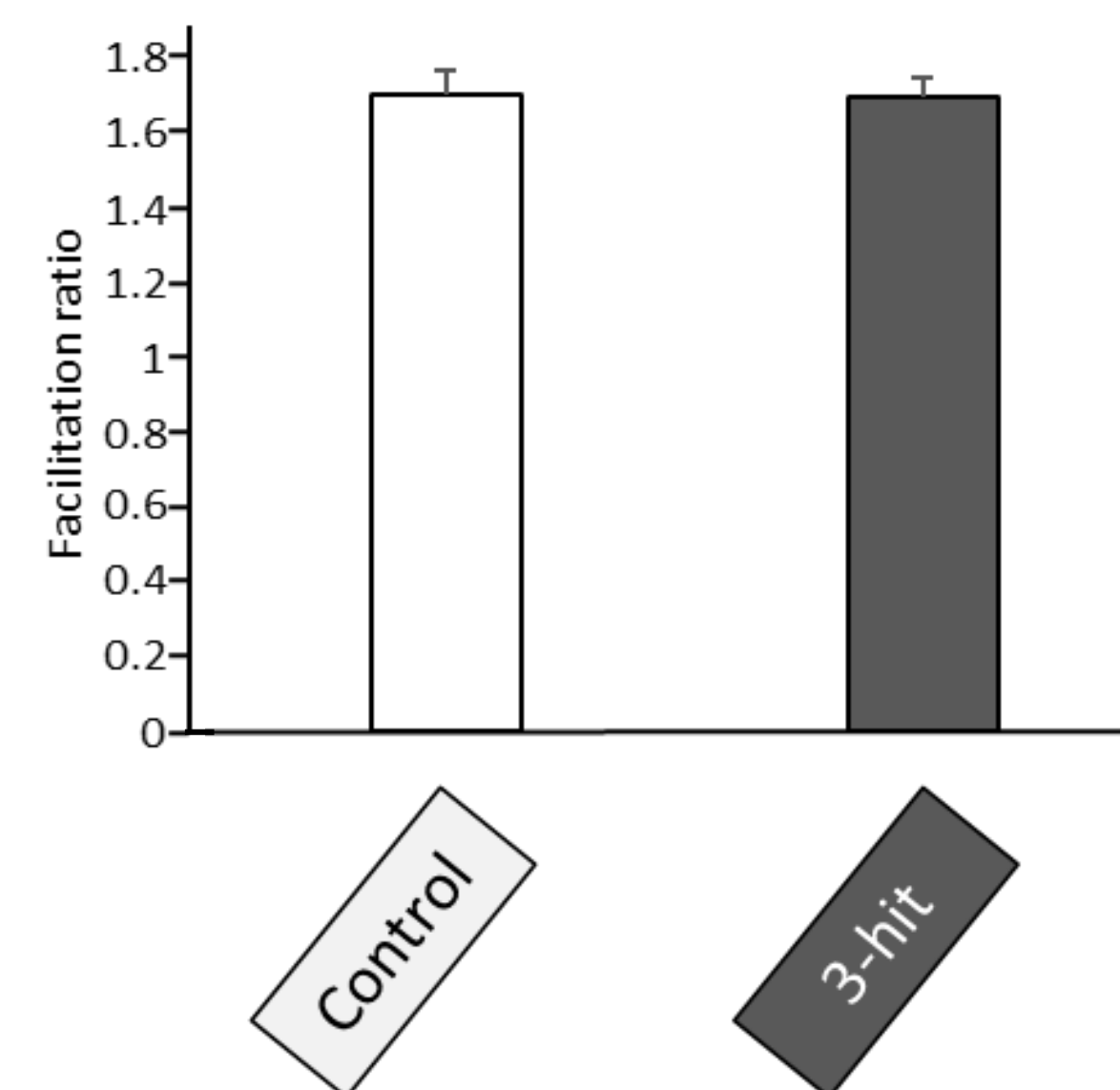
Acquisition phase in novel object recognition test



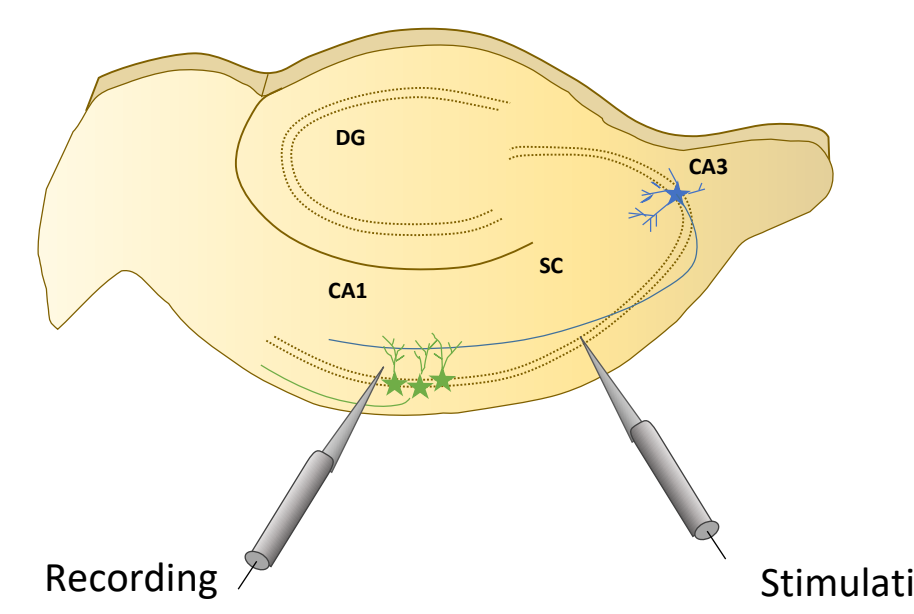
Retention phase in novel object recognition test



Paired pulse ratio (interstimulus interval 50 ms) of the amplitude of the evoked field potentials

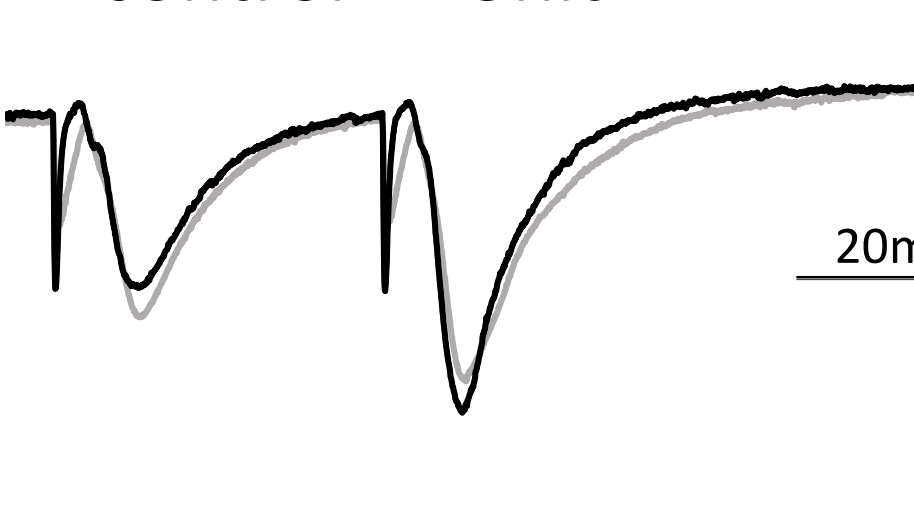


### Hippocampal slice

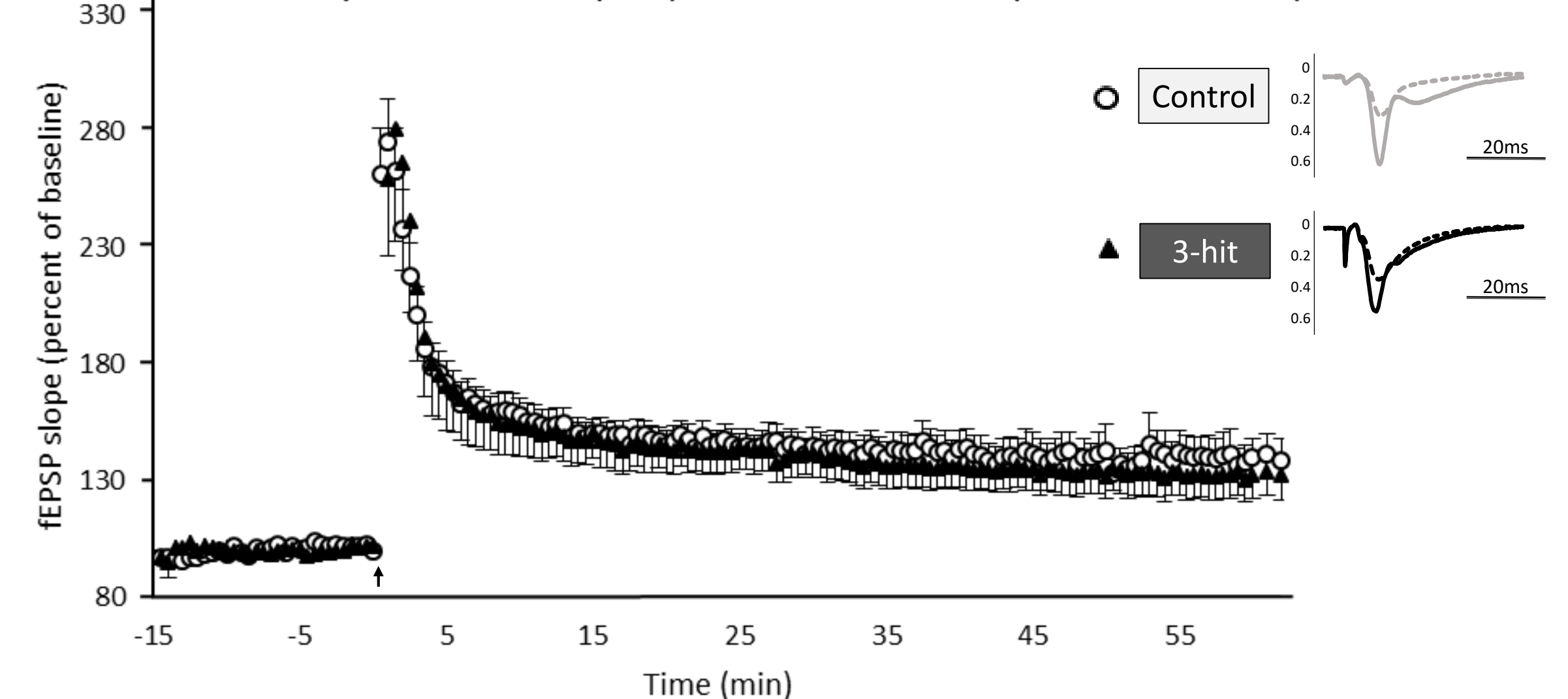


Recording Stimulation

—control —3hit



High frequency stimulation (HFS)-induced long-term potentiation (LTP) 100Hz/1s arrow (mean +/- SEM)



For approach avoidance test and prepulse inhibition, we did not observe any significant differences. Concerning alternation percentage and recognition index, all groups were significantly higher than reference value.

Anova test were used for comparison between groups (\*:  $p < 0.05$ ;  $\sim = 0.06$ ). T test were used for comparison to reference value. Results are represented with means and individuals data.

## DISCUSSION / CONCLUSION

Our results show that 3-hit mice displayed an increased locomotor activity, a decrease in object exploration time, and no modifications of mechanisms regulating basal hippocampal neurotransmission, paired pulse facilitation, or functional plasticity (LTP).

Our new 3-hit model displays a high construct validity, since it implies both genomic and exposomic factors. Face validity is sustained by apparition of positive-like symptoms with hyperlocomotion, negative-like symptoms with decrease in exploration (Mitra et al., 2016), but behavioural assessment and electrophysiological recordings do not permit to reveal cognitive-like symptoms and some of their mechanisms. With the large inter-individual variability observed, characterization of correlates in each individual would help distinguishing possible individual profiles.