



HAL
open science

Impact of heat stress on *Mytilus edulis*: contaminants affect survival and HSP 70 proteoform expression

R. Péden, J. Letendre, B. Rocher, F. Durand, Frank Le Foll, P. Chan, D. Vaudry, F. Bultelle

► To cite this version:

R. Péden, J. Letendre, B. Rocher, F. Durand, Frank Le Foll, et al.. Impact of heat stress on *Mytilus edulis*: contaminants affect survival and HSP 70 proteoform expression. *Journal of Xenobiotics*, 2014, 4, pp.4892. 10.4081/xeno.2014.4892 . hal-02314801

HAL Id: hal-02314801

<https://normandie-univ.hal.science/hal-02314801>

Submitted on 24 Jun 2021

HAL is a multi-disciplinary open access archive for the deposit and dissemination of scientific research documents, whether they are published or not. The documents may come from teaching and research institutions in France or abroad, or from public or private research centers.

L'archive ouverte pluridisciplinaire **HAL**, est destinée au dépôt et à la diffusion de documents scientifiques de niveau recherche, publiés ou non, émanant des établissements d'enseignement et de recherche français ou étrangers, des laboratoires publics ou privés.



Distributed under a Creative Commons Attribution - NonCommercial 4.0 International License

Impact of heat stress on *Mytilus edulis*: contaminants affect survival and HSP 70 proteoform expression

R. Péden,¹ J. Letendre,¹ B. Rocher,¹
F. Durand,² F. Le Foll,¹ P. Chan,³
D. Vaudry,⁴ F. Bultelle¹

¹UMR-I 02 INERIS-URCA-ULH SEBIO/Unité Stress Environnementaux et BIOSurveillance des milieux aquatiques, Université du Havre; ²Faculty of Science, Le Havre University, Normandy University; ³Platform in proteomics PIS-SARO IRIB, Rouen University, Normandy University; ⁴Laboratories of Neuronal and Neuroendocrine Differentiation and Communication, INSERM U982, Rouen University, Normandy University, France

Introduction

The Intergovernmental Panel on Climate Change (IPCC 2007-13) has developed several models that all predict a rise in mean air temperatures over the next decades, associated with increases in temperature of coastal waters.^{1,2} The impact of these changes on coastal environments is in peculiar importance from an ecological and economical point of view. They shelter very high primary productive ecosystems, although abiotic conditions, such as tide intensity, temperature, oxygenation and salinity variations and biotic conditions, such as food availability are multiple constraints that represent limiting factors. Moreover, intertidal areas are severely impacted by complex pollutants cocktails linked to domestic effluent discharges, industrial and agricultural activities. Hence, the question is raised of the survival of organisms coping with an additional stress (temperature) that could reach their limit ability to adapt and compromise the population maintenance. By their wide distribution and direct exposure to abiotic and contamination stresses, sessile bivalves such as *Mytilus edulis* constitute good sentinel species in environmental studies. Their filter-feeding ability is a key characteristic as they bioaccumulate most chemicals associated to fine particles. Thus, blue mussels reflect local contamination history by integrating the environmental exposure.

During the last decades, proteomic tools have been used to compare responses of marine organisms in closely related populations to multiple environmental stresses in order to better understand cellular processes involved in the adaptive mechanisms. Thus,

molecular chaperones constitute major actors and the role of HSP 70 has often been underlined.³ Gills are in peculiar interest because they represent a barrier between the outside aquatic environment and the whole body of the mussel and because of their implication in respiratory and feeding processes. In the present study, we focused on the Bay of the Seine River, a highly anthropized estuary (Eastern English Channel). We considered two contrasted locations in terms of pollution with a pristine site (Yport) and a highly polluted site (Le Havre). A proteomic approach to identify key proteins involved in temperature adaptations of mussels has been conducted in a laboratory stalling system. This system reproduced intertidal and diurnal variations with a combination of different temperature conditioning followed by a single acute thermal stress. We particularly studied the impact of pre-conditioning on mussel mortality rate and HSP 70 proteoform expression.

Materials and Methods

Sample collection and microcosm exposition

Adult mussels (shell length 37.5 mm +/- 3

Correspondence: Romain Péden, Laboratory of Ecotoxicology, UMR-I 02 INERIS-URCA-ULH SEBIO, Le Havre University, Normandy University, France.
E-mail: romain.peden@univ-lehavre.fr

Key words: proteomics, mussel, acclimation, heat shock response, mortality.

Acknowledgments: Romain Péden was a recipient for a doctoral fellowship from the Communauté De l'Agglomération Havraise (CODAH).

This work is licensed under a Creative Commons Attribution NonCommercial 3.0 License (CC BY-NC 3.0).

©Copyright R. Péden et al., 2014
Licensee PAGEPress, Italy
Journal of Xenobiotics 2014; 4:4892
doi:10.4081/xeno.2014.4892

mm, n=540) were collected during July 2013 in tidal zone of the reference site *La Pointe du Chicart*, Yport (49°44'28"N, 0°17'53"E, water temperature 15°C) and the contaminated site *Cap de la Hève*, Le Havre (49°30'41"N, 0°3'56"E, water temperature 16°C). For each site, twenty mussels were directly dissected and gills snap frozen in liquid nitrogen consti-

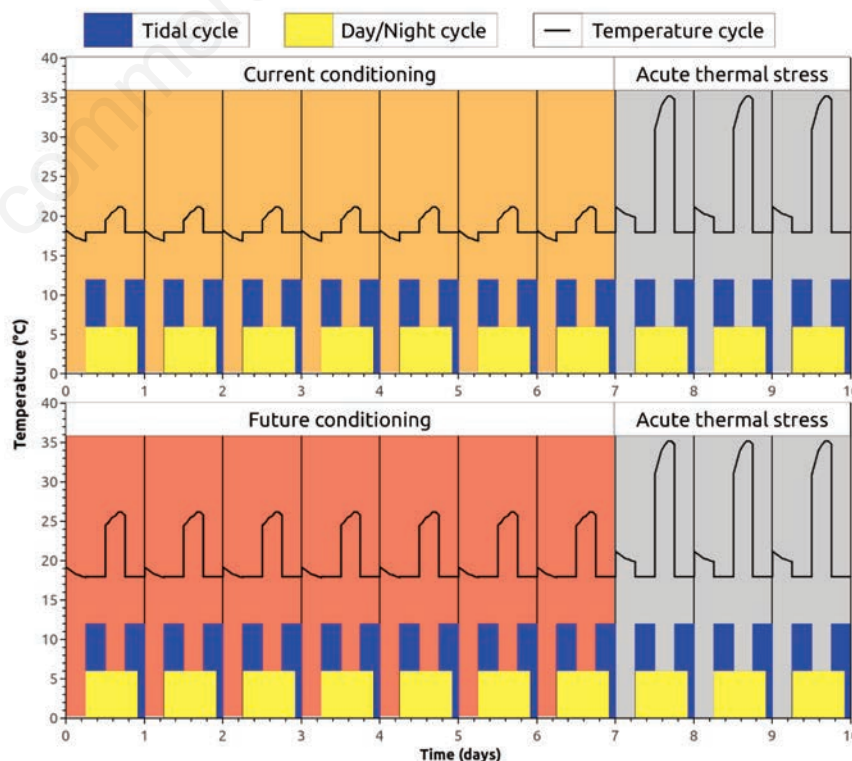


Figure 1. Tidal, day/night and temperature cycles setting in microcosm exposition. Mussels were exposed in parallel for 7 days to present temperature (current conditioning) or to higher temperature (future conditioning). Then, both groups were exposed to an identical acute thermal stress for 3 days.

tuting control group (C). The other mussels were randomly split in two climatic chambers reproducing tidal variations and diurnal cycles (Figure 1). Animals were fed daily with Shellfish Diet 1800 (Reed Mariculture). Prior to thermal exposition, mussels were acclimated to setting water temperature (18°C) by 1°C/day steps. Then, mussels were exposed for 7 days either to present thermal conditions (group A) or to predict future conditions (group F) as defined in A1B IPCC scenario.¹ Finally, both groups were exposed to identical acute thermal stress for 3 days. In each group, 48 mussels were sacrificed at day 7 and 10 and gills were dissected and snap frozen.

Mortality monitoring

The progression of mussel mortality was followed by daily observations. Dead animals were removed and not replaced. Mortality was calculated after 7 days and after 10 days exposure (end-point) and expressed as percentage of remaining mussels in stalling system.

Proteomic analysis

Two-dimensional electrophoresis (2DE) was performed on end-point mussels (groups A and F) versus control mussels (group C). Protocol was adapted from Letendre *et al.*⁴ Briefly, gill proteins were extracted by Precellys grinding in 50 mM Tris buffer pH 7.8 containing urea 9M, CHAPS 2%, DTE 65 mM, 0.8% pharmalytes pH 3-10. The homogenate were sonicated 30 s in 3" Cup-Horn (Maximum power: 100%, Qsonica) and centrifuged at 10,000 g, 20°C for 20 min. Protein contents were measured in supernatant according to the method of Bradford with bovine serum albumin as a standard. For isoelectrofocusing, 750 µg of proteins were loaded on pH 3-10NL strips. Eight biological replicates were performed for each group (total number of gels by site=24). After blue colloidal staining, gels were scanned using the GS-800™ Calibrated Densitometer (Bio-Rad), exported from Quantity One as raw file (16-bits, .tif), processed and statistically analyzed using Delta2D (DECODON GmbH).

Results and Discussion

Mortality

No mortality was observed for animals from both sites after laboratory conditioning. Mortality below 5% was measured in both groups after the 7 days of acclimation. For Yport, death rate remained under 5% at the end of the acute stress (end-point). However, mussel originating from Le Havre exhibited differential survivals depending on the conditioning scenario. Thus, individuals acclimated to future temperature showed moderate mortality (8.3%) whereas those acclimated to pres-

Mortality (%)		After laboratory conditioning	After acclimation (+7 days)	After acute thermal stress (+10 days)
LE HAVRE	Group A	0 %	1.8 %	51.7 %
	Group F	0 %	1.8 %	8.3 %
YPORT	Group A	0 %	4.3 %	3.5 %
	Group F	0 %	4.3 %	2.3 %

Percentages of mortality were expressed as the ratio of dead mussels on remaining animals.

Figure 2. Mortality progression among sites and groups.

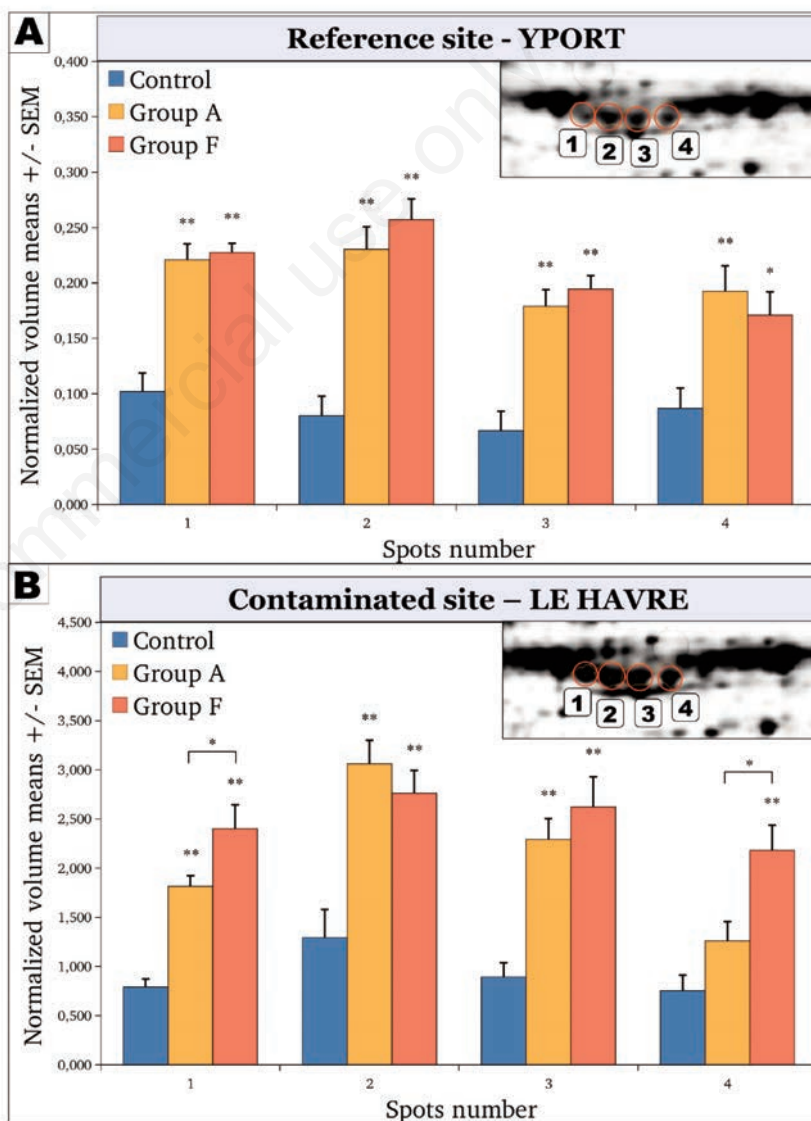


Figure 3. Focus on HSP 70 pattern. Four spots corresponding to HSP 70 proteoforms (upper right corner) were detected and individually compared between three conditions (C: control, A: present thermal conditions and F: predicted future conditions) and two sites: Yport (A) and Le Havre (B). Results are expressed as mean of normalized volumes±SEM, n=8. Differences between conditions were tested using Student *t*-test (**P<0.01, *P<0.05).

ent temperature exhibited over 50% of death rate (Figure 2). So, animals exposed to low level of pollution (Yport) demonstrate a good thermal resistance even when dealing with an acute thermal stress. In contrast, in mussels originating from a highly polluted area (Le Havre), this resistance seems to pass a threshold when a rapid and acute thermal stress occurred. In this case, the energy allocated to withstand to xenobiotics may encroach that required for acute thermal stress resistance. Hence, in case of gradually increase in temperature, on a scale century for instance, mussels could attempt to develop mechanisms of heat stress resistance whereas a rapid transition could overwhelm their capacity of survival, especially in polluted contexts.

Heat Shock Protein 70 expression

We focused our study on a narrow area of 2DE gels where spots were previously identified as HSP 70 proteoforms.⁴ We confirmed this identification by mass spectrometry analysis (*data not shown*). Four spots were discriminated and for each one and each replicate, normalized volumes were calculated. Means of normalized volumes were compared between groups (C, A and F) for Yport (Figure 3A) and Le Havre (Figure 3B). For each site, results showed an over-expression of HSP 70 proteoforms in A and F groups compared to control groups, except for one spot at Le Havre (spot 4). In accordance with literature, the HSP 70 levels markedly increased after heat stress in mussels living in temperate intertidal area.^{3,5,6} For pristine site, an over-expression of roughly 2.5-fold was observed for all proteoforms. In this case, the acclimation did not impact the induction of HSP 70. At the opposite, for Le Havre site, the overall pattern showed a more complicated response with 2 spots exhibiting a lower HSP 70 inducibility in animals from group A (spot 1 and 4). Indeed, proteoform 4

did not show any difference between A and control conditions. We therefore hypothesize on a possible inhibiting effect of pollution on HSP 70 induction. Contamination generates oxidative stress, which in turn could impact with HSP 70 synthesis.⁷ Furthermore, it is known that heat shock response, including HSP 70 synthesis, constitutes an important part of the dynamic energy budget in *Mytilus* gender.^{8,9} Thus, the energy consumption needed to face thermal stress could once more be in competition with energy allocated to xenobiotic response.

Conclusions

As a conclusion this study reinforces that complex surrounding chemical pollution is able to alter HSP 70 induction and impact survival of animals submitted to acute thermal stress. This highlights that individuals may respond differently to thermal stress according to their thermal history. Hence, thermal acclimation will play a major role in the survival of mussel populations in a global warming context.

References

1. Pachauri RK, Reisinger A. Climate Change 2007: Synthesis Report. Contribution of Working Groups I, II and III to the Fourth Assessment Report of the Intergovernmental Panel on Climate Change. Cambridge: Cambridge University Press; 2007.
2. Stocker TF, Qin D, Plattner GK, Tignor M, Allen SK, Boschung J, et al. Climate Change 2013: The Physical Science Basis.

Contribution of Working Group I to the Fifth Assessment Report of the Intergovernmental Panel on Climate Change. Cambridge: Cambridge University Press; 2013.

3. Tomanek L. Proteomics to study adaptations on marine organisms to environmental stress. *J Proteomics* 2014;105:92-106.
4. Letendre J, Dupont-Rouzeyrol M, Hanquet AC, Durand F, Budzinski H, Chan P, et al. Impact of toxicant exposure on the proteomic response to intertidal condition in *Mytilus edulis*. *Comparat Biochem Physiol Part D Genom Proteom* 2011;6:357-69.
5. Chapple JP, Smerdon GR, Berry RJ, Hawkins AJS. Seasonal changes in stress-70 protein levels reflect thermal tolerance in the marine bivalve *Mytilus edulis* L. *J Exp Marine Biol Ecol* 1998;229:53-68.
6. Buckley BA, Owen ME, Hofmann GE. Adjusting the thermostat: the threshold induction temperature for the heat-shock response in intertidal mussels (genus *Mytilus*) changes as a function of thermal history. *J Exp Biol* 2001;204:3571-9.
7. Spiró Z, Arslan MA, Somogyvári M, Nguyen MT, Smolders A, Dancsó B, et al. RNA Interference Links Oxidative Stress to the Inhibition of Heat Stress Adaptation. *Antioxid Redox Signal* 2012;17:890-901.
8. Hawkins AJS. Relationships between the synthesis and breakdown of protein, dietary absorption and turnovers of nitrogen and carbon in the blue mussel, *Mytilus edulis* L. *Oecologia* 1985;66:42-9.
9. Anestis A, Lazou A, Pörtner HO, Michaelidis B. Behavioral, metabolic, and molecular stress responses of marine bivalve *Mytilus galloprovincialis* during long-term acclimation at increasing ambient temperature. *Am J Physiol Regul Integr Comparat Physiol* 2007;293:911-21.