



HAL
open science

Deracemization in a complex quaternary system with a second- order asymmetric transformation using phase diagram studies

Ryusei Oketani, Francesco Marin, Paul Tinnemans, Marine Hoquante, Anne Laurent, Clément Brandel, Pascal Cardinaël, Hugo Meekes, Elias Vlieg, Yves Geerts, et al.

► To cite this version:

Ryusei Oketani, Francesco Marin, Paul Tinnemans, Marine Hoquante, Anne Laurent, et al.. Deracemization in a complex quaternary system with a second- order asymmetric transformation using phase diagram studies. *Chemistry - A European Journal*, 2019, 25 (61), pp.13890-13898. 10.1002/chem.201903338 . hal-02276778

HAL Id: hal-02276778

<https://normandie-univ.hal.science/hal-02276778>

Submitted on 3 Sep 2019

HAL is a multi-disciplinary open access archive for the deposit and dissemination of scientific research documents, whether they are published or not. The documents may come from teaching and research institutions in France or abroad, or from public or private research centers.

L'archive ouverte pluridisciplinaire **HAL**, est destinée au dépôt et à la diffusion de documents scientifiques de niveau recherche, publiés ou non, émanant des établissements d'enseignement et de recherche français ou étrangers, des laboratoires publics ou privés.

Deracemization in a complex quaternary system with a second-order asymmetric transformation using phase diagram studies

Ryusei Oketani,^[a] Francesco Marin,^[b] Paul Tinnemans,^[c] Marine Hoquante,^[a] Anne Laurent,^[b] Clément Brandel,^[a] Pascal Cardinael,^[a] Hugo Meekes,^[c] Elias Vlieg,^[c] Yves Geerts,^[b] Gérard Coquerel^{*,[a]}

Abstract: We report herein, a productive deracemization process based on a quaternary phase diagram study of a naphthamide derivative. New racemic compounds of an atropisomeric naphthamide derivative were discovered, and a quaternary phase diagram was constructed which indicated that four solids were stable in a methanol/H₂O solution. Based on the heterogeneous equilibria study showing the stable domain of the conglomerate, a second-order asymmetric transformation was achieved up to 97% ee. Further, the methodology showcases the chiral separation of a stable racemic compound forming system and does not suffer from any typical limitations of deracemization, although application is still limited to conglomerate forming systems. We anticipate that this demonstration will serve as a fundamental model for the design of sophisticated chiral separation processes.

1. Introduction

Chirality or asymmetry is a fundamental property and has critical importance in many avenues of nature, particularly in biology and pharmaceuticals. Indeed, the human body consists of a large variety of chiral amino acids and sugar molecules, and the availability of chiral separation techniques is paramount to enable studies relating to the biological function and activity of chiral molecules. Access to the desired polymorph and enantiomer of the particular compound is a critical issue in the field of pharmaceutical chemistry owing to the difference of bioavailability and bioactivity among polymorphs and enantiomers. Among the 42 drugs of chemical entities approved by the Food and Drug Administration (FDA) in 2018, 25 molecules contain a chiral center^[1,2], and over 80% of the active pharmaceutical ingredients (APIs) exhibit polymorphism or solvate formation^[3,4] and may show differences in physical properties, which makes chiral separation and polymorph control vital aspects of drug development. Classical chiral resolution techniques such as chemical transformation mediated diastereomeric resolutions are robust and reliable approaches to prepare enantiomerically pure materials and are preferentially used in industrial chemistry. However, in such approaches, the undesired enantiomer, which constitutes half of the product is wasted or needs to be recycled.

To reduce such waste and improve productivity, chiral separation by deracemization, an approach which combines racemization with crystallization, has been the subject of intense studies. Viedma ripening (VR)^[5-9] and temperature cycle induced deracemization (TCID)^[10-15] are key approaches to deracemization and are being actively studied. We recently reported that second-order asymmetric transformation (SOAT)^[16], a combination of preferential crystallization (PC) and racemization, could achieve relatively high process productivity compared to TCID due to short process time. In this report, we use a SOAT based approach for an efficient chiral resolution.

Phase diagrams are important tools for understanding and controlling the crystallization. Indeed, the construction of a phase diagram is essential for rationally: (i) determining appropriate crystallization conditions of molecules exhibiting multiple solid phases, (ii) assessing the thermodynamic stability of solid phases, (iii) controlling the supersaturation.^[17-19] Recently, our group demonstrated that PC could be applied on a metastable conglomerate of diprophylline, which crystallizes in multiple crystal forms depending on the conditions.^[20] However, the utility of such an approach using phase diagram investigations for deracemization has not been reported yet. While deracemization is a well-developed chiral resolution technique, it still suffers from limitations. For example, it is applicable only to conglomerate forming systems, i.e. 5-10 % of the racemic crystals.^[21] Since racemization of the substrate is a requirement for the deracemization process, the gap of two thermodynamic equilibrium states of the process must be tuned to design reaction conditions for an efficient deracemization. For advanced industrial applications, the availability of model studies is crucial in order to facilitate process modeling. The present work aims at serving as a model study for the use of a phase diagram based approach for deracemization of molecules that exhibit a complex solid phase landscape.

In the present study, we characterized two new solid phases of atropisomeric naphthamide **1**, shown in **Figure 1**, using SC-XRD, DSC, and XRPD measurements and constructed the quaternary phase diagram of **1** in a mixture of methanol (MeOH) and water (H₂O) using XRPD and solubility measurements. Further, we studied the impact of temperature on the racemic isoplethal section. Based on the conditions obtained from the phase diagram study, we successfully performed the chiral resolution of **1** by SOAT in a MeOH/H₂O solution and achieved up to 97% ee and a productivity of 6.5 g h⁻¹ L⁻¹.

[a] R. Oketani, M. Hoquante, Dr. C. Blandel, Prof. Dr. P. Cardinael, Prof. Dr. G. Coquerel
Université de Rouen Normandie, UFR des Sciences et Techniques,
Laboratoire SMS-EA3233, Place Emile Blondel, 76821 Mont-Saint-Aignan, France
E-mail: gerard.coquerel@univ-rouen.fr

[b] F. Marin, A. Laurent, Prof. Dr. Geerts
Laboratoire de Chimie des Polymères, Faculté des Sciences,
Université libre de Bruxelles (ULB), Boulevard du Triomphe, 1050
Brussels, Belgium

[c] Dr. P. Tinnemans, Dr. H. Meekes, Prof. Dr. E. Vlieg
Radboud University, Institute for Molecules and Materials,
Heyendaalseweg 135, 6525 AJ Nijmegen, The Netherlands

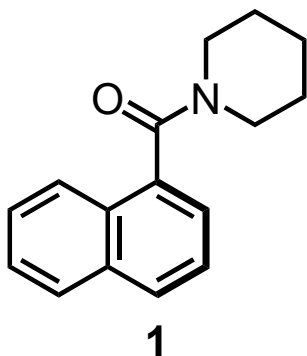


Figure 1. Chemical structure of atropisomeric naphthamide **1**.

2. Results and Discussion

2.1 Preparation and characterization of C, Rac, and Me

In 2005, Sakamoto et al. reported the crystal structure of the first form of **1** and designated it as C,^[22] which can be prepared from solutions of **1** in many conventional solvents, except in MeOH, by slow evaporation. The space group of C is $P2_12_12_1$, and the crystals form a conglomerate. Racemic compound, Rac, could be obtained in the first crop by cooling crystallization from a mixture of chloroform and heptane (1/1, v/v). Indeed, after the collection of Rac by filtration, only C crystallized from the filtrate. Rac can also be prepared by suspending any crystal form in a mixture of MeOH/H₂O (70/30, v/v) at 15 °C. As the melting point of Rac is lower by 12 °C than that of the racemic mixture of C, it could be considered as a less stable phase than C at high temperature in the binary system.

Further, comparison between the enthalpy of fusion (ΔH_{fus}) also supports the order of stability. A <1-1> racemic MeOH solvate (hereafter Me) could also be prepared. The deposited crystals appeared highly transparent in the solution, and after filtration, the surface of the crystals desolvated and turned to C. The desolvation temperature of Me was determined by TGA-DSC-MS measurement. The incorporated MeOH molecules were released at 50.4 °C, and Me turned to C and/or Rac depending on the heating rate. XRPD measurements confirmed that each phase could be prepared as a structurally pure phase (Figure 2).

Table 1. Thermochemical properties of the four solid phases of **1**: C: {(+) and (-)}, Rac, and Me.

	C	Rac	Me
Thermodynamic stability	Stable	Slowly transforms to C at high temperature	The surface can be desolvated under ambient condition
Melting point / °C	111.2	99.4	50.4
ΔH_{fus} / kJ·mol ⁻¹	24.8	20.8	desolvation

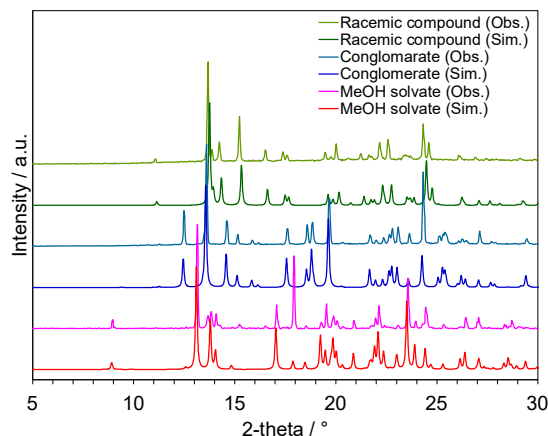


Figure 2. XRPD patterns of the three crystal forms of **1**.

2.2 Crystal structures of Rac and Me

Crystallographic data for C, Rac, and Me of **1** are summarized in Table 2 for comparison. The data for C has been included from Sakamoto's report, ref code NATQEF. Rac and Me correspond to racemic compound. ORTEP representations of Rac and Me are shown in Figure 3a and b, respectively. The overlaid molecular structures of Rac and Me (Figure 3c) indicate that the conformations in both solid phases are almost identical. By contrast, the major difference between Rac and C was found in the piperidyl residues, as shown in Figure 3d. In both solid phases, the piperidyl groups exist in the chair conformation. However, the conformation of the piperidine ring are opposite, with the two piperidyl rings related as flipped chairs.

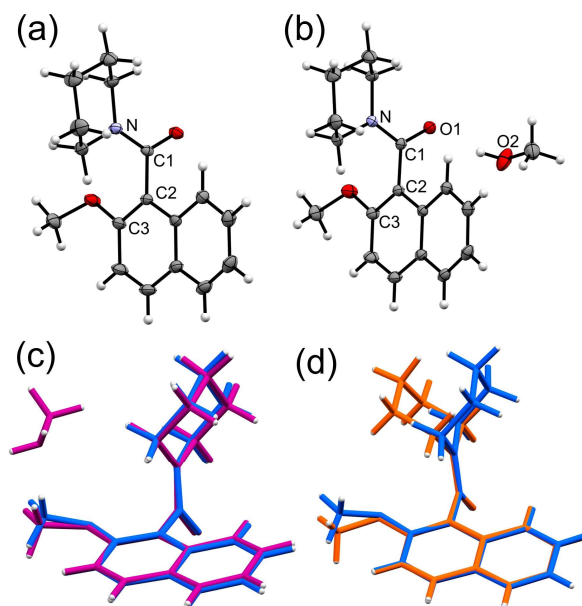


Figure 3. ORTEP representations of the (*R*)-enantiomer (a) in Rac, and (b) in Me of **1** at 150 K. Thermal ellipsoids are displayed at 50% probability. Overlaid molecular structures in (c) Rac (blue) and Me (magenta), and (d) Rac (blue) and C (orange).

Table 2. Crystallographic data of C, Rac, and Me.

Name	C ^[a]	Rac	Me
Chemical formula	C ₁₇ H ₁₉ NO ₂	C ₁₇ H ₁₉ NO ₂	C ₁₇ H ₁₉ NO ₂ , CH ₄ O
Formula mass	269.33	269.33	301.37
Crystal system	Orthorhombic	Monoclinic	Monoclinic
<i>a</i> / Å	7.963(3)	8.8254(7)	8.9139(8)
<i>b</i> / Å	11.713(3)	18.3093(14)	9.1407(7)
<i>c</i> / Å	15.708(4)	9.0671(6)	19.7111(16)
<i>a</i> / °	90	90	90
<i>b</i> / °	90	94.273(3)	96.114(3)
<i>g</i> / °	90	90	90
Unit cell volume / Å ³	1465.2(8)	1461.1(2)	1596.9(2)
Temperature / K	298	150(2)	150(2)
Space group	<i>P</i> 2 ₁ 2 ₁ 2 ₁	<i>P</i> 2 ₁ / <i>c</i>	<i>P</i> 2 ₁ / <i>c</i>
No. of formula units per cell, Z	4	4	4
No. of reflections measured	-	107936	101718
No. of independent reflections	1611	5612	6125
<i>R</i> _{int}	-	0.0624	0.0327
Final <i>R</i> _i values (<i>I</i> > 2σ(<i>I</i>))	0.0499	0.0495	0.0410
Final w <i>R</i> (<i>F</i> ²) values (<i>I</i> > 2σ(<i>I</i>))	0.1316	0.1264	0.0503
Final <i>R</i> _i values (all data)	-	0.0756	0.1150
Final w <i>R</i> (<i>F</i> ²) values (all data)	-	0.1412	0.1222
Goodness of fit on <i>F</i> ²	1.125	1.024	1.060

[a]Reported by Sakamoto et al. Ref code: NATQEF.

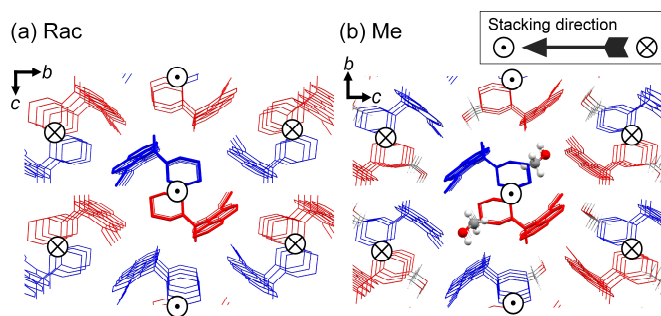


Figure 4. Crystal packing of (a) Rac and (b) Me along the *a*-axis. Hydrogen atoms are omitted for clarity. *R*- and *S*- isomers are colored in red and blue, respectively.

In Rac, the centrosymmetric pairs are stacked along the *a*-axis. Other columns with the same stacking direction are arranged in

an *ac* plan, and the columns with opposite stacking direction are arranged in the next *ac* planes shifted by + and - 1/2 *b*-axis (**Figure 4a**). In Me, the packing structure is basically the same as in Rac (**Figure 4b**). However, the differences between the Rac and Me are as follows: (i) the MeOH molecules are accommodated in the pocket next to the molecules of **1**, and (ii) the direction of the stacked columns in the adjacent *ab* plane is similar but the centrosymmetric pairs are swapped.

2.3 Quaternary phase diagram of *R*, *S*-1, MeOH, and water

Since the quaternary equilibria of MeOH, H₂O, and the enantiomers of **1** resulted in a complicated system due to the spontaneous racemization in solution, we briefly introduce the ternary systems relevant for the solid phases of **1**. **Figure 5** summarizes the ternary phase diagrams of the enantiomers of a chiral molecule with a solvent, both for the presence and absence of racemization in the solution.^[17,23–25] Any composition in the undersaturated or saturated solutions will evolve towards the racemic composition because of the racemization in the liquid phase. Many results have reported an irreversible evolution to a single chirality in the solid state for racemizable conglomerate forming systems.^[8,26–29] As long as the system remains an undersaturated solution, the enantiomeric excess of the system remains zero. However, once the conglomerate starts to crystallize, the system in equilibrium will consist of a racemic solution and a single chiral solid. In case of a racemic compound, only the racemic compound and a racemic solution are accessible for the system in equilibrium. **Figure 6** depicts the schematic isothermal and isobaric quaternary system of MeOH, H₂O, and the enantiomers of **1**. Every face of the tetrahedron represents a ternary isotherm. Compound **1** forms a stable MeOH solvate racemic compound in methanol and a stable conglomerate in water. Since compound **1** exhibits spontaneous racemization in any solution, the two conglomerate isotherms are degenerated. Regarding the racemic isoplethal section outlined in magenta lines, (±)-**1**/MeOH/H₂O, two cases were observed depending on the temperature as shown in **Figure 7**. Depending on the solvent composition, the following solid phases; C, Rac, and Me could be stable in the racemic isoplethal section, with Me being the stable phase at a high MeOH concentration, Rac being the stable phase at a moderate MeOH concentration, and C being the stable phases at low MeOH concentration. It is also surprising that regardless of the relative stability of C with Rac in the binary system, Rac is more stable phase than C at a moderate MeOH concentration at lower temperature. Indeed, C crystals were converted to Rac in such suspension, and cross-seeding experiments gave similar results. Point H indicates the solubility of Me in MeOH. Point I is the common point in the solubility curves of Me and Rac, in case these two phases would have had a monotropic character point I' would have not existed in equilibrium. At point I', the intersection of the solubility curves of Rac and C, three solid phases co-exist before racemization occurs. Thus, measuring the point where the composition of the two phases does not change is a straightforward approach to confirm the existence of I'. We used XRPD measurements after cross-seeding and continuous stirring for one week to confirm the presence of point I'.

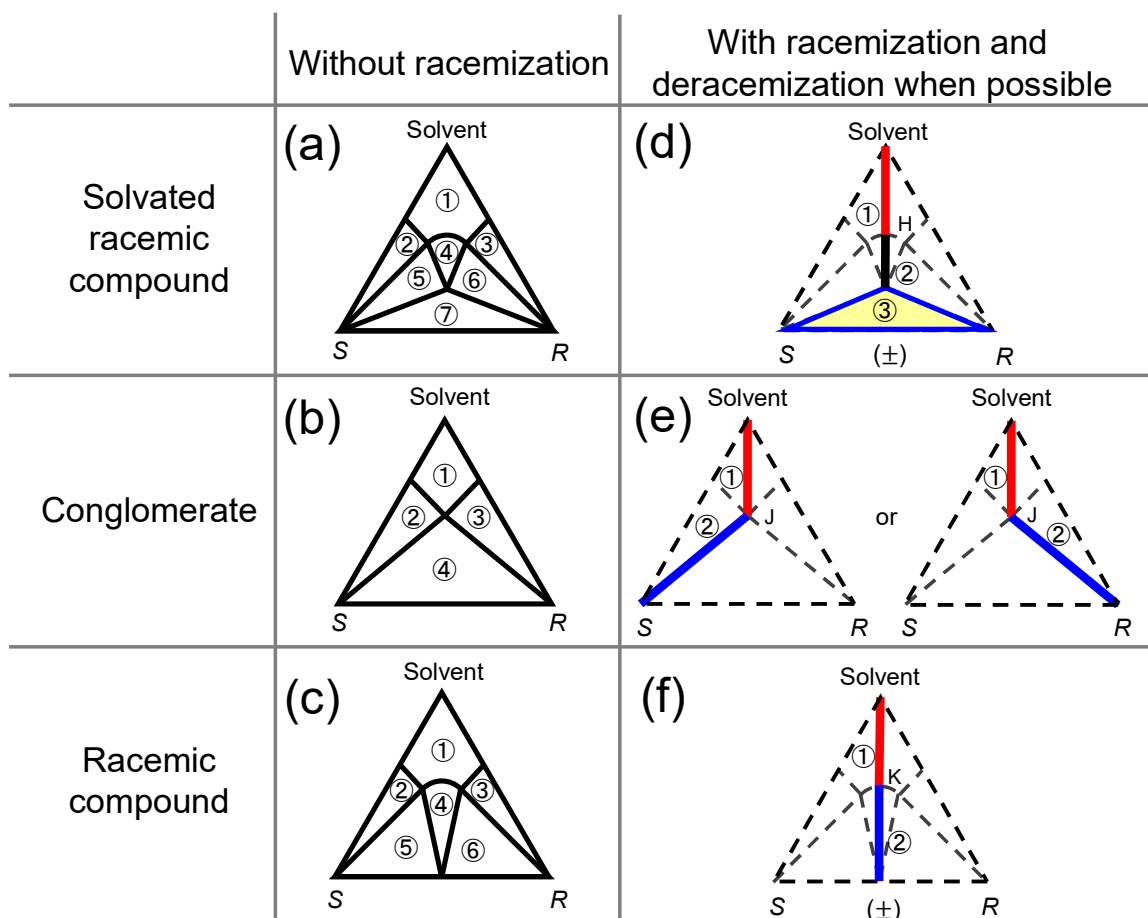


Figure 5. Ternary system of solvated racemic compound, conglomerate, and racemic compound and corresponding degenerated system due to the racemization in solution. Only domains limited by full lines are accessible. *Deracemization is supposed to occur only when a stable conglomerate is in contact with a solution.* The stable phases for the ternary system are : (a) ① undersaturated solution; ② (S)+ saturated solution; ③ (R)+ saturated solution; ④ ((±)-MeOH) + saturated solution; ⑤ ((±)-MeOH)+(S)+ saturated solution; ⑥ ((±)-MeOH) + (R)+ saturated solution; and ⑦ ((±)-MeOH)+(S)+(R), (b) ① undersaturated solution; ② (S)+ saturated solution; ③ (R)+ saturated solution; and ④ (S) + (R) + racemic saturated solution, (c) ① undersaturated solution; ② (S) + saturated solution; ③ (R) + saturated solution; ④ ((±)) + saturated solution; ⑤ (S) + ((±)) + doubly saturated solution; and ⑥ (R) + ((±)) + doubly saturated solution. The stable phases for the degenerated ternary equilibrium are: (d) ① undersaturated solution; ② ((±)-MeOH)+ racemic saturated solution H; ③ ((±)-MeOH)+(S)+(R), (e) ① undersaturated solution; ② (S) or (R) + racemic saturated solution J, (f) ① undersaturated solution; ② ((±)) + racemic saturated solution K.

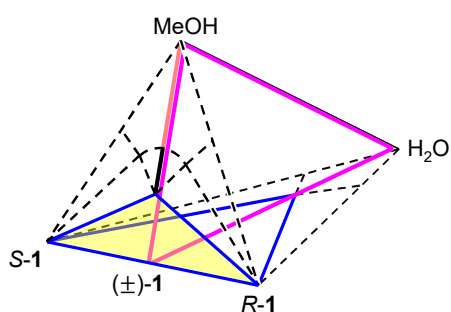


Figure 6. Quaternary isotherm system with a couple of enantiomers of 1, MeOH, and H₂O. The triangular face (MeOH/S-1/R-1) represents the ternary isotherm indicating a stable solvated racemic compound with racemization. The base of the tetrahedron corresponds to the ternary isotherm (H₂O/S-1/R-1) showing the stable conglomerate with racemization. Magenta triangular plane is the racemic isoplethal section, (±)-1/MeOH/H₂O.

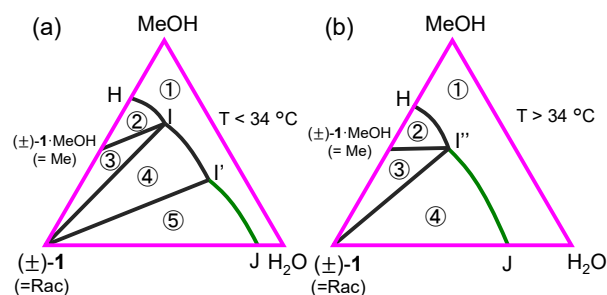


Figure 7. The ternary equilibrium at the racemic isoplethal section of (±)-1/MeOH/H₂O (a) below 34 °C ① undersaturated solution; ② ((±)-1·MeOH) + saturated solution; ③ ((±)-1) + ((±)-1·MeOH) doubly saturated solution I; and ④ ((±)-1) + saturated solution; ⑤ ((+)-1) + ((-)-1) + saturated solution, and (b) above 34 °C ① undersaturated solution; ② ((±)-1·MeOH) + saturated solution; ③ ((+)-1) + ((-)-1) + ((±)-1·MeOH) triply saturated solution I'; and ④ ((+)-1) + ((-)-1) + saturated solution. Every solution has a racemic composition.

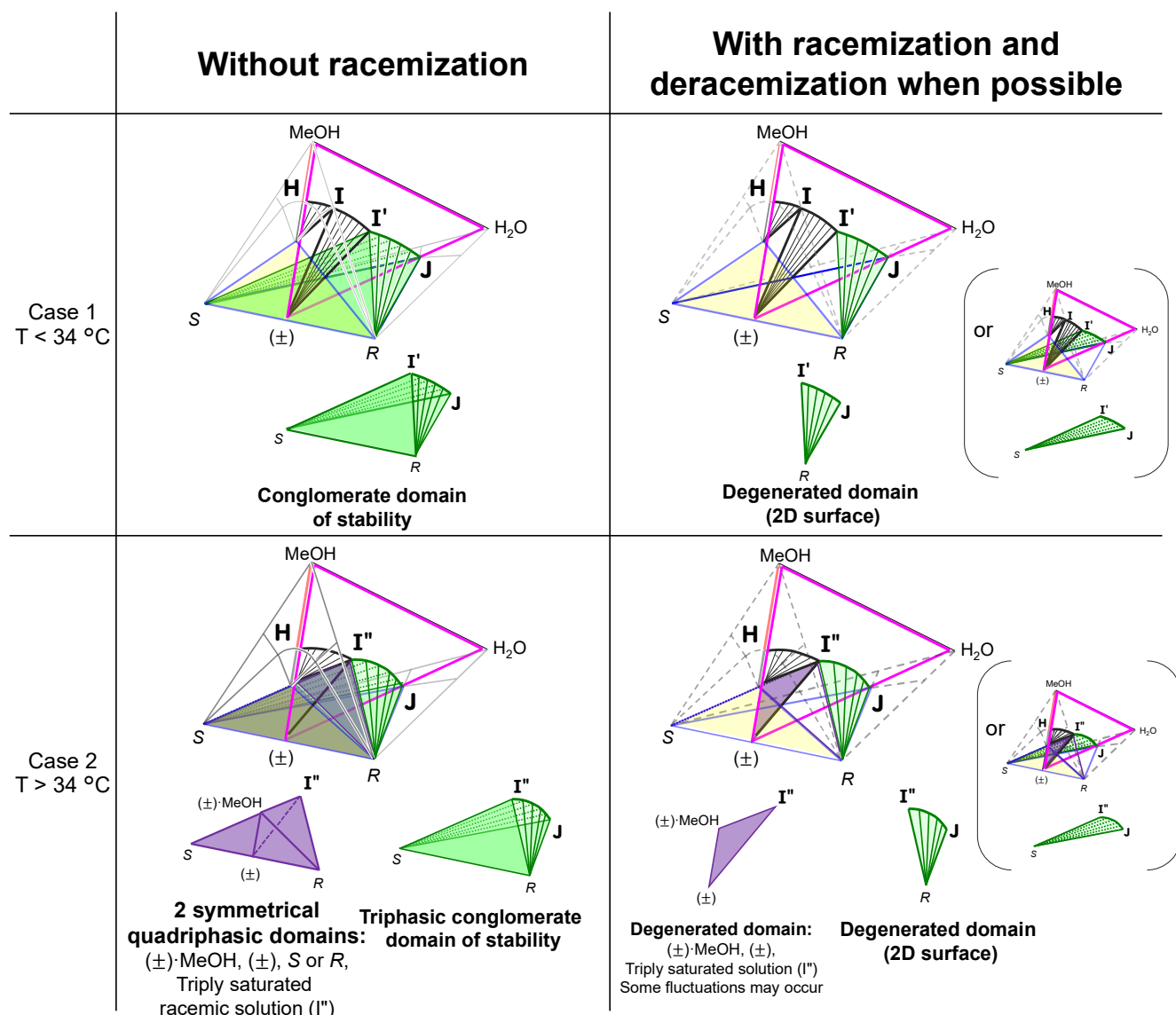


Figure 8. Quaternary system with two different solvents (MeOH, and H₂O), and a couple of enantiomers (*R* and *S*) with and without racemization in the liquid phase with two types of racemic isoplethal section shown in Figure 6. The systems with racemization correspond to the (\pm) -1/MeOH/H₂O. In **Case 1**, the curves in the racemic isoplethal section ($H - I$, $I - I'$, $I' - J$) correspond to the solubility curves of Me, Rac, and C, respectively. When deracemization occurs, conglomerate domain of stability degenerates to a 2D surface involving one of the enantiomers and the racemic compound (\pm) , as coloured in green. In addition, the domain in the ternary system (MeOH/*R/S*) is also involved in the equilibrium. In **Case 2**, the solubility lines in the racemic isoplethal section ($H - I''$ and $I'' - J$) correspond to the solubility curves of Me and C, respectively. In contrast to Case 1, the conglomerate domain of stability does not include racemic compound (\pm) . Only domains limited by full lines are accessible.

Figure 8 summarizes isothermal and isobaric quaternary systems with and without racemization. The domains highlighted in green or purple represent the areas of chiral discrimination, i.e., these domains involve conglomerate forms. Another similar case was described in detail in a review.^[30] Under the usual condition without racemization in Case 1, the upper surface of conglomerate stability domain is delineated by the $S - R - I'$ plane, it contains the racemic compound (\pm) . In Case 2 without deracemization, the two symmetrical quadriphasic domains related to racemic plane are delineated by the line from the common point I'' and the stoichiometric point of $(\pm)\cdot\text{MeOH}$.

Beyond point I'' , toward richer concentration in water, there is a single monovariant curve down to the doubly saturated solubility point J in pure H₂O, that represents the edge of the conglomerate domain of the stability. Conversely, in case of deracemization conglomerate, the crystals of a single enantiomer and racemic solution are in equilibrium at the end of the deracemization as described above. Thus, both cases 1 and 2 are degenerated and should be drawn by the system as shown in the right column of **Figure 8**. For enthusiastic readers, the animated perspectives are available in Supporting Information.

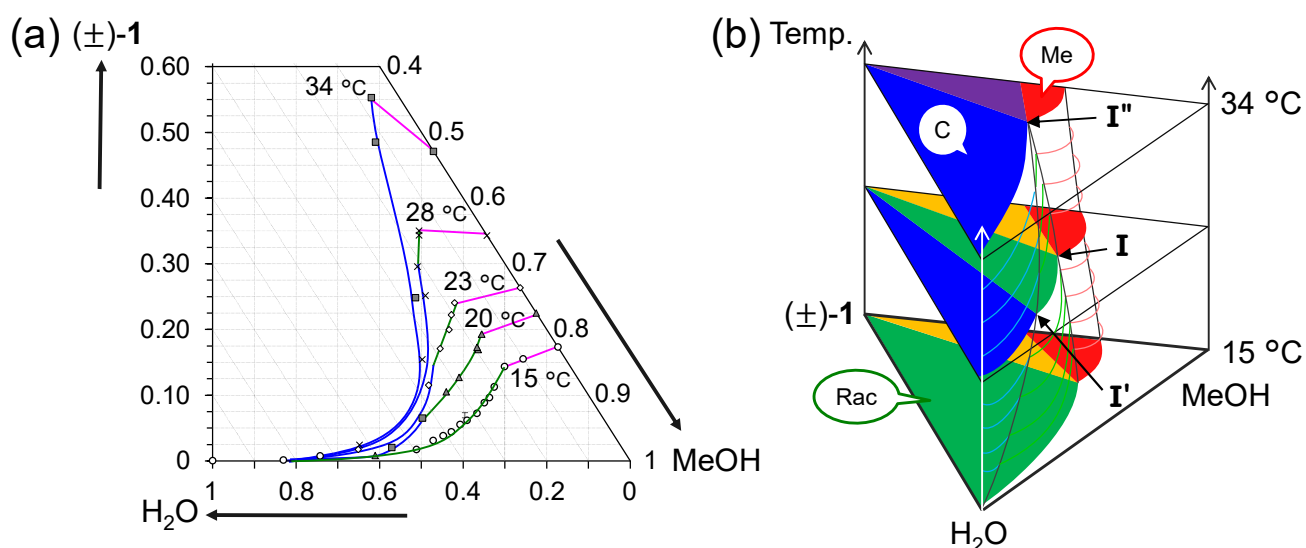


Figure 9. (a) The isoplethal sections of the quaternary phase diagrams of (*R*)- and (*S*)-enantiomers of **1**, H₂O, and MeOH at 15 °C (○), 20 °C (▲), 23 °C (◇), 28 °C (×), and 34 °C (■). (b) Schematic diagram of the isoplethal section along the temperature axis.

To understand the concrete heterogeneous equilibrium at different temperatures, we studied the isoplethal sections of (±)-**1**/MeOH/H₂O at 15, 20, 23, 28, and 34 °C. Interestingly, Rac under ambient conditions has a large stability domain at 15 °C at high water concentration, as seen from **Figure 9**. Further, the domain of stable C gradually expands at higher temperature. Point I' exists at relatively high concentrations of H₂O at low temperatures, and shifts towards low concentrations of H₂O at high temperatures. While the size of the domain for Me does not change significantly, point I remains at almost the same composition. As a result, points I' and I merged into I'' at 34 °C, and the domain of stable Rac disappears, indicating that Rac is no longer stable above 34 °C. Since Me desolvated at 50 °C and cannot exist above such temperature, the size of the domain of stable C expands in a two-step manner up to 50 °C.

Overall, the thorough phase diagram study afforded guidelines for the chiral separation of **1** by crystallization. As the conglomerate-forming system is necessary, the chiral separation could be ideally implemented above 34 °C. Considering the solubility of **1**, the chiral separation of **1** was carried out in MeOH/H₂O (70/30, v/v) above 28 °C, and at this solvent composition, C is stable, and its solubility is moderate at this operating temperature.

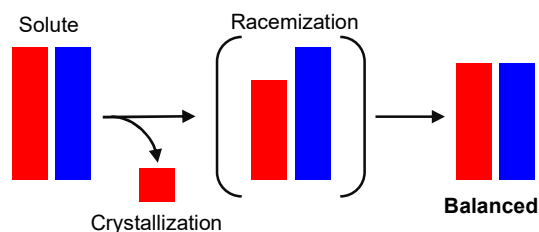
2.4 Deracemization by SOAT

To confirm racemization of **1** in solution, and to implement deracemization by SOAT, the kinetic constants k_1 for the racemization process were measured by polarimetry at a temperature range from 15 to 45 °C. The values were used to construct an Arrhenius plot.^[16] The Gibbs free energy of activation (ΔG^\ddagger) was determined to be 96 kJ·mol⁻¹ (See Supporting Information). The racemization rate was slower in polar solvents compared to non-polar solvents, and particularly in protic solvents such as MeOH and a mixture of MeOH/H₂O (70/30, v/v). This behavior is similar to a pyrrolidine, and the observations can be

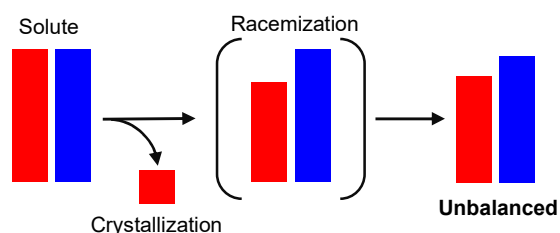
attributed to hydrogen bonding between the carbonyl oxygen atom of **1** and the solvent, which reduces the rate of racemization. Generally, a slow racemization of the molecule during the deracemization process is not preferred as the enantiomeric composition in the solution during the crystallization would gradually shift in the direction of the undesired enantiomer, which could eventually cause nucleation of the counter-enantiomer due to the relatively high supersaturation, as shown in **Figure 10**. In this context, the deracemization of **1** in a mixture of MeOH/H₂O (70/30, v/v) would not be preferable. Further screening test might give a solution to such a problematic case. However, considering the feasibility of SOAT, a too high or poor solubility was trade-off problem by considering MeOH mixtures. Thus, we used the mixture of MeOH and H₂O with optimization of the crystallization duration, because the behavior of **1** had been well studied as abovementioned.

The results of the SOAT of **1** are summarized in **Table 3**. As expected from the racemization behavior of **1**, the short crystallization duration of 10 h resulted in a low ee of the isolated crystals. The crystallization duration of 20 h furnished high ee with a maximum of 97% ee. To confirm the reproducibility of the experiment, we performed SOAT with the same duration and used seed crystals of the opposite enantiomer, which afforded a good ee after 20 h with an average value of 90% ee. The average volumetric productivity,^[32] which indicates the quantity of the desired product that can be obtained per time unit and volume was 6.5 g h⁻¹ L⁻¹ for the process. Compared to our previous study,^[16] which demonstrated a comparison of productivity between SOAT and TCID, the productivity in the present work is low owing to the long crystallization duration caused by the poor racemization rate.

(a) Fast racemization



(b) Slow racemization



Time

Figure 10. Schematic representation of the chiral separation by crystallization with (a) fast racemization and (b) slow racemization.

Table 3. Experimental results of SOAT of **1** in MeOH/H₂O (70/30, v/v).

Duration / h	m_{crop} / g	ee_{final} [%]	Pr / g h ⁻¹ L ⁻¹
10	16.5	(S) 11	0.9
15	14.7	(S) 68	6.0
20	16.1	(S) 97	7.3
20	15.4	(R) 92	6.6
20	14.9	(R) 81	5.5

3. Conclusions

The crystal structures of a racemic compound (Rac) and a racemic compound methanol solvate (Me) of axially chiral naphthamide **1** have been determined. The quaternary phase diagram of enantiomers of **1** in MeOH and H₂O has been constructed. Particularly, the impact of temperature on the racemic isoplethal section of **1** in solution was thoroughly studied over a temperature range from 15 to 34 °C. At 15 °C, Rac is a stable phase in high H₂O concentration, while Me was stable at a low H₂O concentration. The domain for the stable C gradually expands from a high H₂O concentration region with increasing temperature. Eventually, the domain for Rac disappears at 34 °C, and only C and Me are stable up to 50 °C. Based on the phase diagram study, it is demonstrated that the chiral separation of the enantiomers of **1** by SOAT in MeOH/H₂O (70/30, v/v), resulted in crystals with high enantiomeric excess (up to 97% ee). These results further prove the efficiency of the phase diagram approach

for enabling chiral separation by crystallization even when there is a stable racemic compound forming system which is typically challenging. The lessons from the present study will serve as a model for developing deracemization applications for industrial processes.

4. Experimental Section

Synthesis of **1** and preparation of C, Rac, and Me

Naphthamide **1** was synthesized using our previously reported procedure,^[10] with a slight modification. The conversion of 2-hydroxy-1-naphthoic acid (Sigma-Aldrich) to 2-methoxy-1-naphthoic acid was carried out in 2 steps, and the condensation of the prepared 2-methoxy naphthoic acid with piperidine afforded **1**. The methods for the preparation of the conglomerate (C), racemic compound (Rac), and MeOH solvate racemic compound (Me) are summarized in **Table 4**.

Table 4. Preparation methods for the three solid phases of **1**.

Solid phase	Preparation method
C	Slow evaporation from conventional solvents ^[a]
Rac	Cooling crystallization from CHCl ₃ /Heptane (1/1, v/v) mixture or slow evaporation from a MeOH/H ₂ O (8/2, v/v) mixture
Me	Cooling crystallization or slow evaporation from a solution in MeOH

[a]Ethanol, Isopropyl alcohol, *tert*-Butyl alcohol, Acetonitrile, Isobutyronitrile, Methyl *tert*-butyl ether, Tetrahydrofuran, Acetone, and Methyl *iso*-butyl ketone

Chiral HPLC analysis

The accurate chiral composition of **1** in solid samples (powder or single crystals) was determined by using high-performance liquid chromatography (HPLC) with an (S, S) Whelk-O1 column (Regis Technologies, Inc., $\phi 4.6 \times 250 \text{ mm} \times 5 \mu\text{m}$) employing a mixture of heptane and isopropyl alcohol (1/1, v/v) as the mobile phase, at a flow rate of 1.5 mL/min. The wavelength employed for UV detection was 230 nm. To suppress racemization during analysis, the column temperature was controlled at 0 °C using a thermostat with a double glass jacket. Under these conditions, retention times of 3.8 and 5.5 min were observed for (R)-**1** and (S)-**1**, respectively. Analyses were performed using a SpectraSYSTEM (P1000XR, AS3000, UV2000, and SN4000, and Fisher Thermo Scientific). The enantiomeric excess (ee) values were obtained by integrating and comparing the peak areas of (R)-**1** and (S)-**1** using ChromQuest software.

Differential Scanning Calorimetry (DSC)

DSC experiments were performed using a Netzsch DSC 204 F1 apparatus equipped with an intracooler. Each DSC run was completed in aluminum pans with pierced lids at a heating rate of 5.0 K/min. The atmosphere of the analytes during the analysis was regulated by a nitrogen flux (40 mL/min), and Netzsch-TA Proteus software was used for data processing. Onset temperatures used as the melting point or desolvation point were calculated from the intersection between the baseline and the slope of the first (respectively last) portion of the endotherm.

Single Crystal X-ray Diffraction (SC-XRD)

Reflections were measured on a Bruker D8 Quest diffractometer with a sealed tube, and a Triumph monochromator ($\lambda = 0.71073 \text{ \AA}$) and the intensity integration was carried out using the software Saint. Absorption correction was performed with SADABS. The structures were solved with direct methods using SHELXT.^[33] Least-squares refinement was performed with SHELXL-2014^[34] against all reflections. Non-hydrogen atoms were refined freely with anisotropic displacement parameters. The positions of the hydrogen atoms were calculated or located by differences in Fourier maps. All hydrogen atoms were refined with a riding model. Copies of the data can be obtained free of charge on application to CCDC, 12 Union Road, Cambridge CB2 1EW, U.K. (deposit@ccdc.cam.ac.uk). CCDC 1936797, 1936798, and 1937666 .

Solubility Measurements for the construction of the phase diagram

The solubility of **1** in MeOH and in the mixture of MeOH and H₂O was measured in triplicate using a gravimetric method or by the determination of clear point using Crystal16 (Technobis B.V.). The identity of the solid phase(s) in equilibrium with a saturated solution was monitored by XRPD analysis. To be sure of the stable character of a solid phase in certain composition of the solution, the sample for the solubility measurement was prepared by cross-seeding technique, i.e., the mixture of different forms of crystals was added in the clear saturated solution at the given temperature, and a long elapsed time before sampling the solution and analysis by XRPD of the solid phases.

Second order asymmetric transformation (SOAT)

SOAT of **1** was carried out according to the following procedure. To a double jacketed 100 mL crystallizer (Reactor-Ready Lab reactor, Radleys) equipped with a thermocouple and a mechanical stirrer, compound **1** and MeOH/H₂O (70/30, v/v) were added, and the mixture was heated to 50 °C with stirring (500 rpm) to dissolve **1** completely. The jacket temperature was controlled using a thermostat (Unichiller, HUBER). The solution was cooled to 34 °C at a rate of 1 K·min⁻¹, and the temperature was maintained for 20 min. The seed crystals (>99% ee of *R* or *S* isomer) were added to the solution at a stirring rate of 200 rpm, and the solution was cooled to 28 °C with a controlled cooling profile. Typically, the optimization of cooling curves for different operating conditions is complex. However, Mullin *et al.* reported the simplified relationship depicted by Eq. 1, which is adequate for general applications.^[35]

$$\theta_t = \theta_0 - (\theta_0 - \theta_i) (t/\tau)^3 \quad (\text{Eq. 1})$$

Where θ_0 , θ_i , and θ_t are the temperatures at the beginning, end, and any time t during the crystallization, respectively, and τ is the overall duration of the crystallization. Details of the operating conditions are summarized in **Table 5**.

Table 5. Operating conditions for SOAT of **1**

Mass of 1 (g)	28.2
Mass of solvent (g)	85.4
Concentration (wt%)	24.8
Mass of seeds (g)	1.00
Stirring speed (rpm)	200
Duration (h)	10, 15, 20

Acknowledgements

The authors are grateful to Prof. Dr. Lucia Maini in University of Bologna for single crystal X-ray diffraction measurement of **Rac** at 293 K. This research received funding as part of a CORE project (October 2016–September 2020) from the Horizon 2020 Research and Innovation Programme of the European Union under Marie Skłodowska-Curie grant agreement No. 722456 CORE ITN. F.M. and Y.G. would like to thank Erasmus+ Programme of the European Union for the opportunity to carry out this project.

Keywords: Deracemization • Second-order asymmetric transformation (SOAT) • Phase diagram • Atropisomerism

- [1] FDA's Center for Drug Evaluation and Research's (CDER's) Advancing health through innovation 2018 New drug therapy approvals, **2019**.
- [2] B. G. de la Torre, F. Albericio, *Molecules* **2019**, *24*, 809.
- [3] P. H. Karpinski, *Chem. Eng. Technol.* **2006**, *29*, 233–237.
- [4] S. L. Veinberg, K. E. Johnston, M. J. Jaroszewicz, B. M. Kispal, C. R. Mireault, T. Kobayashi, M. Pruski, R. W. Schurko, *Phys. Chem. Chem. Phys.* **2016**, *18*, 17713–17730.
- [5] A. H. J. Engwerda, N. Koning, P. Tinnemans, H. Meekes, F. M. Bickelhaupt, F. P. J. T. Rutjes, E. Vlieg, *Cryst. Growth Des.* **2017**, *17*, 4454–4457.
- [6] L. Spix, A. Alfring, H. Meekes, W. J. P. Van Enckevort, E. Vlieg, *Cryst. Growth Des.* **2014**, *14*, 1744–1748.
- [7] L. Spix, H. Meekes, R. H. Blaauw, W. J. P. Van Enckevort, E. Vlieg, *Cryst. Growth Des.* **2012**, *12*, 5796–5799.
- [8] R. R. E. Steendam, J. Dickhout, W. J. P. Van Enckevort, H. Meekes, J. Raap, F. P. J. T. Rutjes, E. Vlieg, *Cryst. Growth Des.* **2015**, *15*, 1975–1982.
- [9] W. L. Noorduyn, P. Van Der Asdonk, A. A. C. Bode, H. Meekes, W. J. P. Van Enckevort, E. Vlieg, B. Kaptein, M. W. Van Der Meijden, R. M. Kellogg, G. Deroover, *Org. Process Res. Dev.* **2010**, *14*, 908–911.
- [10] R. Oketani, M. Hoquante, C. Brandel, P. Cardinael, G. Coquerel, *Cryst. Growth Des.* **2018**, *18*, 6417–6420.
- [11] K. Suwannasang, A. E. Flood, C. Rougeot, G. Coquerel, *Org. Process Res. Dev.* **2017**, *21*, 623–630.
- [12] G. Belletti, H. Meekes, F. P. J. T. Rutjes, E. Vlieg, *Cryst. Growth Des.* **2018**, acs.cgd.8b00856.
- [13] C. Rougeot, F. Guillen, J. C. Plaquevent, G. Coquerel, *Cryst. Growth Des.* **2015**, *15*, 2151–2155.
- [14] F. Breveglieri, G. M. Maggioni, M. Mazzotti, *Cryst. Growth Des.* **2018**, *18*, 1873–1881.
- [15] A. A. Fytopoulos, C. Xiouras, M. E. Kavousanakis, T. Van Gerven, A. G. Boudouvis, G. D. Stefanidis, *Cryst. Growth Des.* **2018**, acs.cgd.8b00706.
- [16] R. Oketani, M. Hoquante, C. Brandel, P. Cardinael, G. Coquerel, *Org. Process Res. Dev.* **2019**, acs.oprd.9b00133.
- [17] G. Coquerel, in *Polymorph. Pharm. Ind.*, Wiley-VCH Verlag GmbH & Co. KGaA, Weinheim, Germany, **2018**, pp. 91–132.

-
- [18] C. Brandel, Y. Cartigny, G. Coquerel, J. H. ter Horst, S. Petit, *Chem. - A Eur. J.* **2016**, *22*, 16103–16112.
- [19] E. Temmel, M. J. Eicke, F. Cascella, A. Seidel-Morgenstern, H. Lorenz, *Cryst. Growth Des.* **2019**, *19*, acs.cgd.8b01660.
- [20] C. Brandel, Y. Amharar, J. M. Rollinger, U. J. Griesser, Y. Cartigny, S. Petit, G. Coquerel, *Mol. Pharm.* **2013**, *10*, 3850–61.
- [21] J. Jacques, A. Collet, S. H. Wilen, *Enantiomers, Racemates, and Resolutions*, Wiley, **1981**.
- [22] M. Sakamoto, A. Unosawa, S. Kobaru, A. Saito, T. Mino, T. Fujita, *Angew. Chem. Int. Ed.* **2005**, *44*, 5523–5526.
- [23] G. Coquerel, in *Adv. Org. Cryst. Chem.* (Eds.: R. Tamura, M. Miyata), Springer Japan, Tokyo, **2015**, pp. 393–420.
- [24] G. Coquerel, *J. Pharm. Pharmacol.* **2015**, *67*, 869–878.
- [25] S. Gonella, G. Levilain, G. Coquerel, *J. Therm. Anal. Calorim.* **2011**, *103*, 125–129.
- [26] C. Viedma, *J. Cryst. Growth* **2004**, *261*, 118–121.
- [27] W. L. Noorduin, H. Meekes, W. J. P. Van Enkevort, A. Millemaggi, M. Leeman, B. Kaptein, R. M. Kellogg, E. Vlieg, *Angew. Chem. Int. Ed.* **2008**, *47*, 6445–6447.
- [28] W. L. Noorduin, B. Kaptein, H. Meekes, W. J. P. Van Enkevort, R. M. Kellogg, E. Vlieg, *Angew. Chem. Int. Ed.* **2009**, *48*, 4581–4583.
- [29] A. H. J. Engwerda, P. van Schayik, H. Jagtenberg, H. Meekes, F. P. J. T. Rutjes, E. Vlieg, *Chem. - A Eur. J.* **2018**, *24*, 2863–2867.
- [30] G. Coquerel, *Chem. Soc. Rev.* **2014**, *43*, 2286–300.
- [31] M. Sakamoto, A. Unosawa, S. Kobaru, K. Fujita, T. Mino, T. Fujita, *Chem. Commun.* **2007**, 3586.
- [32] C. Rougeot, J. E. Hein, *Org. Process Res. Dev.* **2015**, *19*, 1809–1819.
- [33] G. M. Sheldrick, *Acta Crystallogr. Sect. A Found. Adv.* **2015**, *71*, 3–8.
- [34] G. M. Sheldrick, *Acta Crystallogr. Sect. C Struct. Chem.* **2015**, *71*, 3–8.
- [35] J. W. Mullin, *Crystallization*, Butterworth Heinemann, Oxford, **2001**.
-