



HAL
open science

ace, Which Encodes an Adhesin in *Enterococcus faecalis*, Is Regulated by Ers and Is Involved in Virulence

François Lebreton, Eliette Riboulet-Bisson, Pascale Serror, Maurizio Sanguinetti, Brunella Posteraro, Riccardo Torelli, Axel Hartke, Yanick Auffray, Jean-Christophe Giard

► To cite this version:

François Lebreton, Eliette Riboulet-Bisson, Pascale Serror, Maurizio Sanguinetti, Brunella Posteraro, et al.. ace, Which Encodes an Adhesin in *Enterococcus faecalis*, Is Regulated by Ers and Is Involved in Virulence. *Infection and Immunity*, 2009, 77 (7), pp.2832-2839. 10.1128/IAI.01218-08 . hal-02180975

HAL Id: hal-02180975

<https://normandie-univ.hal.science/hal-02180975v1>

Submitted on 31 May 2020

HAL is a multi-disciplinary open access archive for the deposit and dissemination of scientific research documents, whether they are published or not. The documents may come from teaching and research institutions in France or abroad, or from public or private research centers.

L'archive ouverte pluridisciplinaire **HAL**, est destinée au dépôt et à la diffusion de documents scientifiques de niveau recherche, publiés ou non, émanant des établissements d'enseignement et de recherche français ou étrangers, des laboratoires publics ou privés.

ace, Which Encodes an Adhesin in *Enterococcus faecalis*, Is Regulated by *Ers* and Is Involved in Virulence[∇]

Francois Lebreton,^{1†} Eliette Riboulet-Bisson,^{1†} Pascale Serror,² Maurizio Sanguinetti,³
Brunella Posteraro,³ Riccardo Torelli,³ Axel Hartke,¹ Yanick Auffray,¹
and Jean-Christophe Giard^{1*}

Laboratoire de Microbiologie de l'Environnement, EA 956 soutenue par l'INRA, IFR 146, Université de Caen, 14032 Caen Cedex, France¹; Unité des Bactéries Lactiques et Pathogènes Opportunistes, INRA, Domaine de Vilvert, 78350 Jouy-en-Josas, France²; and Institute of Microbiology, Catholic University of Sacred Heart, L. go F. Vito 1, 00168 Rome, Italy³

Received 3 October 2008/Returned for modification 10 December 2008/Accepted 24 April 2009

***Enterococcus faecalis* is an opportunistic pathogen that causes numerous infectious diseases in humans and is a major agent of nosocomial infections. In this work, we showed that the recently identified transcriptional regulator *Ers* (PrfA like), known to be involved in the cellular metabolism and the virulence of *E. faecalis*, acts as a repressor of *ace*, which encodes a collagen-binding protein. We characterized the promoter region of *ace*, and transcriptional analysis by reverse transcription-quantitative PCR and mobility shift protein-DNA binding assays revealed that *Ers* directly regulates the expression of *ace*. Transcription of *ace* appeared to be induced by the presence of bile salts, probably via the deregulation of *ers*. Moreover, with an *ace* deletion mutant and the complemented strain and by using an insect (*Galleria mellonella*) virulence model, as well as in vivo-in vitro murine macrophage models, we demonstrated for the first time that Ace can be considered a virulence factor for *E. faecalis*. Furthermore, animal experiments revealed that Ace is also involved in urinary tract infection by *E. faecalis*.**

Enterococcus faecalis is a natural member of the intestinal microflora of warm-blooded animals and humans. However, *E. faecalis* remains an important opportunistic pathogen and represents one of the principal causes of nosocomial infections in the United States and Europe (33; for a review, see reference 20). Especially for immunocompromised patients, these infections include endocarditis, meningitis, pneumonia, peritonitis, visceral abscesses, urinary infections, and septicemia (13). About a dozen putative virulence factors have been identified in *E. faecalis*, but mechanisms of virulence remain not fully understood. These factors are involved in different steps of the infection process, such as attachment to host cells or extracellular matrix (ECM), macrophage resistance, tissue damage, and immune system evasion (20).

For extracellular pathogens such as *E. faecalis* or *Staphylococcus aureus*, components of ECM or serum (i.e., collagen, fibronectin, and fibrinogen) are preferred targets for adhesion. During important steps of the infectious process, they interact with bacterial surface-exposed molecules, which include microbial surface components recognizing adhesive matrix molecules (MSCRAMMs). Ace, an adhesin that binds collagen (types I and IV) and laminin and belongs to the MSCRAMM family, was identified in *E. faecalis* by sequence homology with the virulence factor Cna, a well-characterized MSCRAMM in *S. aureus* (16, 26). Synthesis of the A domain of Ace by *S. aureus* increased its arthritogenic potential to a level similar to

that of *S. aureus* expressing Cna (34). Study of the sequence diversity of *ace* among several strains of *E. faecalis* has revealed an important variation in the number of repeated sequences (17). However, the role played by these regions has not yet been elucidated. The expression of Ace is significantly induced by high temperature (culture at 46°C) and in vivo by the presence of serum or ECM components (8, 14, 15, 28). These results highlight the existence of different in vivo mechanisms of regulation, according to the environmental conditions encountered by *E. faecalis* during infection. Moreover, antibodies directed against Ace have been almost always found in serum from patients with endocarditis due to *E. faecalis*, reinforcing the idea of significant expression of this protein in vivo (17). In one study, mice vaccinated with the collagen-binding part of Cna of *S. aureus* were partially protected from septic death (19). Moreover, mice immunized with recombinant protein Cna-FnBP (fibronectin-binding protein) survived longer following *S. aureus* infection than nonimmunized mice did (36). Very recently, the collagen adhesin Acm of *E. faecium* was shown to contribute to pathogenesis. Since anti-Acm antibodies reduced *E. faecium* collagen adherence, the authors propose that Acm may be a potential immunotarget (18). Despite the clear role of Ace in adhesion to ECM and to human epithelial and endothelial cells, to our knowledge, this protein has never been directly implicated in animal survival (8).

Recently, *Ers* (for enterococcal regulator of survival) was identified in *E. faecalis* by sequence homology with PrfA, the major regulator of virulence genes in *Listeria monocytogenes* (6, 24). *Ers* plays an important role in the survival of oxidative stress and in the survival of the bacterium in mouse macrophages, as well as in the virulence of *E. faecalis* (6, 25). Investigation of members of the *Ers* regulon showed that this reg-

* Corresponding author. Mailing address: Laboratoire de Microbiologie de l'Environnement, Université de Caen, 14032 Caen Cedex, France. Phone: (33) 231 565 410. Fax: (33) 231 565 311. E-mail: jean-christophe.giard@unicaen.fr.

† These authors contributed equally to this work.

∇ Published ahead of print on 11 May 2009.

TABLE 1. Bacterial strains and plasmids used in this study

Strain or plasmid	Relevant characteristic(s)	Reference(s) or source
<i>E. faecalis</i>		
JH2-2	Fus ^r Rif ^r ; plasmid-free wild-type strain	9, 35
Δ ers	JH2-2 isogenic Δ ers mutant	25
Δ ace	JH2-2 isogenic Δ ace mutant	This study
Complemented Δ ace	<i>ace</i> insertion in the JH2-2 Δ ace mutant	This study
JH2-2/p3535ers	Strain JH2-2 harboring plasmid p3535ers	This study
<i>E. coli</i>		
XL1Blue	<i>recA1 endA1 gyrA96 thi-1 hsdR17 supE44 relA1 lac[F' proAB lacI^qZΔM15]</i> Tn10 (Tet ^r)	Stratagene
M15/pQE ₃₀ ersHTH	Strain harboring pQE ₃₀ ersHTH	This study
<i>L. lactis</i> IL 1403		
		4
Plasmids		
pMAD	oriP194 ^{ts} Em ^r Amp ^r <i>bgaB</i>	1
pMSP3535		3
pGEM-T easy	f1 ori <i>lacZ</i> Amp ^r	Promega
pMad- Δ ace	Construction for the <i>ace</i> deletion mutant	This study
pMad- <i>ace</i>	Construction for the complemented <i>ace</i> mutant strain	This study
pMSP3535ers	<i>ers</i> cloned into overexpression vector p3535	This study
pGEM-T-Pace	Promoter of <i>ace</i> cloned into pGEM-T	This study

ulator directly interacts with the promoter regions of *ers*, ef0082, *arcABC*, and ef1459 (25). Sequence comparison of these regions allowed the characterization of a putative consensus sequence (AACATTTGTTG) that shows similarity to the PrfA box of *Listeria* (TTAACANNTGTAA) (25).

In the present study, we identified the regulator of *ace* and demonstrated for the first time that Ace is a virulence factor for *E. faecalis*. In addition, we found that the presence of bile salts is another in vivo stress able to increase the level of *ace* mRNA, likely due to the deregulation of *ers*.

MATERIALS AND METHODS

Bacterial strains, plasmids, and growth conditions. The bacterial strains and plasmids used in this study are listed in Table 1. *E. faecalis* JH2-2 (9, 35) and its derivatives were grown at 37°C in M17 medium (30) supplemented with 0.5% glucose (GM17) or brain heart infusion, and when required, erythromycin (50 or 150 µg/ml) was added. *Escherichia coli* strains were cultured while shaking at 37°C in LB medium (27) with ampicillin (100 µg/ml), kanamycin (25 µg/ml), or erythromycin (150 µg/ml) when required. Bile salt stress was imposed by incubation of an exponential growth phase culture (optical density at 600 nm [OD₆₀₀] of 0.3) with 0.08% (wt/vol) bile salts for 30 min.

General molecular methods. PCRs were done with a reaction volume of 25 µl and chromosomal DNA of *E. faecalis* JH2-2 by using PCR Master Mix (Eppendorf, Hamburg, Germany). The primers used for this work are listed in Table 2. PCR products and plasmids were purified with the NucleoSpin Plasmid kit (Macherey-Nagel, Düren, Germany). Classical enzymes (restriction endonucleases, alkaline phosphatase, and T4 DNA ligase) were purchased from Amersham Biosciences (Piscataway, NJ), Promega (Madison, WI), and Roche Applied Science (Indianapolis, IN) and used according to the manufacturers' instructions. Genomic DNA extraction and other standard techniques were carried out as described by Sambrook et al. (27).

Construction of Δ ace mutant and complemented strains. For the construction of *ace* deletion mutant (Δ ace) and complemented strains by double-crossover assays, we used the method previously described (11). Briefly, a DNA fragment (obtained with chromosomal DNA of *E. faecalis* JH2-2 as the template) containing ligated upstream (1,091-bp) and downstream (1,080-bp) sequences of the *ace* gene (for the mutant) or including the entire *ace* gene (3,636 bp) (for the complemented strain) was cloned into plasmid pMAD (1) (Table 1), and 1 µg of the recombinant plasmid was used to transform competent cells. Candidate clones resulting from a double-crossover event were isolated on GM17 agar with or without erythromycin. Antibiotic-susceptible clones were analyzed by PCR for the presence of a deletion-containing or intact *ace* gene. Seventy percent of the

ace gene was deleted in the mutant strain, starting 257 bp after the ATG codon and stopping 279 bp before the TAA codon and creating frameshifts and stop codons in the remaining sequence. This has been verified by sequencing.

Construction of strain JH2-2/p3535ers overproducing Ers. In order to overproduce the regulator Ers, we cloned the corresponding gene into plasmid pMSP3535 (3). The entire gene was amplified by PCR (Table 2) and then inserted just downstream of the nisin-inducible promoter present in the plasmid. The resulting construction was electroporated into *E. faecalis* JH2-2, creating strain JH2-2/p3535ers. By Western blotting with an anti-Ers antibody, we found that the addition of 0.5 µg nisin (Sigma Chemical Co., St. Louis, MO) per ml of culture at an OD₆₀₀ of 0.2 for 1 h corresponded to the optimal conditions that allowed the overproduction of Ers.

Protein extraction and Western blotting. Cells were from *E. faecalis* strains cultivated as follows: exponential growth phase (OD₆₀₀ of 0.5) at 37°C, exponential growth phase (OD₆₀₀ of 0.5) at 46°C, and exponential growth phase (OD₆₀₀ of 0.3) at 37°C, followed by 30 min in the presence of bile salts (0.08%, wt/vol). For strain JH2-2/p3535ers, overproduction of Ers was performed as described above. Ten milliliters of bacterial culture was harvested by centrifugation. Cells were resuspended in 125 µl of 0.25 M Tris buffer (pH 7.5) and broken by the addition of glass beads (0.1 and 0.25 mm in diameter) and vortexing for 4 min. Unbroken cells were removed by centrifugation, the supernatant was transferred to another tube, and the protein concentration was determined by the Bio-Rad protein assay (Bradford method; Bio-Rad Laboratories, Richmond, CA). Sodium dodecyl sulfate Laemmli buffer was added before loading (40 µg). After electrophoresis, proteins were transferred onto a polyvinylidene difluoride membrane that was stained with Coomassie blue in order to verify that the same quantity of protein was present in all of the lanes. Blocking, incubation with antiserum against His-tagged Ers, and enhanced-chemiluminescence detection (ECL detection kit; GE Healthcare, Little Chalfont, United Kingdom) were carried out as previously described (25).

Reverse transcription (RT)-quantitative PCR (qPCR) and mapping of the transcriptional start site. For each condition (described above) and strain, three samples of total RNA were isolated with the RNeasy Midi kit (Qiagen, Valencia, CA). Specific primers designed to produce amplicons of equivalent length (100 bp) were designed with the V583 genome sequence and the Primer3 software (http://frodo.wi.mit.edu/cgi-bin/primer3/primer3_www.cgi) and are listed in Table 2. Two micrograms of RNA was reverse transcribed with random hexamer primers and Omniscript enzyme (Qiagen).

Quantification of 23S rRNA gene or *gyrA* (encodes gyrase) levels was used as an internal control. Amplification (carried out with 5 µl of a 1/100 dilution of cDNA), detection (with automatic calculation of the threshold value), and real-time analysis were performed twice and in duplicate with three different cDNA samples by using the Bio-Rad iCycler iQ detection system (Bio-Rad Laboratories). The value used for the comparison of gene expression levels was the number of PCR cycles required to reach the threshold cycle (C_T). To relate the

TABLE 2. Primers used in this study

Locus ^a or primer name	Sequence (5'–3') ^a		Use
	Forward	Reverse	
<i>ers</i>	CGCGGATCCATAATAGATAATTGAGG	TTGCTGCATCTTTTTCATGG	RT-qPCR
ef0082	TTGACGTCAGCACCTTCTTC	CGTAGCGTTCACCTTTGACA	RT-qPCR
ef0049	CAGCTTTTCCGACACGTCTT	TTCCCCACGTACTTTAGCA	RT-qPCR
ef0782	TTAGAGCGCGCAGTGAATC	ATGGCCGATCTGCTTCTAAA	RT-qPCR
<i>ace</i>	ATGAAGGAAGCCACAGTTG	GTTGTGCTGTTTTGGGAAG	RT-qPCR
<i>kat</i>	GCTGTTTGGGATTTTTGGTC	CATGCATATGACGGAACGAC	RT-qPCR
ef1656	TTTATTTGTCACCCAACCAACA	CAATTGAAACGGTTGATCAGAA	RT-qPCR
ef1664	TGGCGACCTAATFACCTTGG	CGTTTGCATCGTACGTGAGT	RT-qPCR
ef1816	CGTCAAGACGATACCCGATT	TTTCCATGTTGTGCAGGAAG	RT-qPCR
ef2185	GCGATTGCTCCAACCTGAATC	GCCGTCCGTAATAAAAAGCA	RT-qPCR
ef3146	CCAGAATTCTCAATTCTCTCGTT	CAAATTTTTGTACACCGACAGG	RT-qPCR
<i>ace</i> Race1	ATTCCAACCTAGTGCCTCTGG		5'RACE PCR
<i>ace</i> Race2	TTGAGGTCATCTCTCCTTG		5'RACE PCR
<i>ace</i> Race3	TCAATTCGGCGCCAAACGAA		5'RACE PCR
<i>Prom-ace</i>	TCATTCTTTTCTCTCTTATCT	CCGCAATTGGTAGAATCATT	Cloning in pGEM-T
<i>Prom-ers</i>	TAAGTTTGGTTCTGTCTATTA	CGACTCGAAAGGAATGTTCA	Cloning in pGEM-T
<i>ace</i> DC-U ^b	CCGGAATTCAAGCTCAACTATGCCTG TCGA	CGCGGATCCGTCATTCCAACCTAGTGCCTG	Cloning in pMAD
<i>ace</i> DC-D ^b	CGCGGATCCCAGCCATCCACAGAAA CAAC	GAAGATCTTTCCTCTGCCATTAACGCGT	Cloning in pMAD
p3535 <i>ers</i>	CGCGGATCCATAATAGATAATTGAGG AGTTA	CGCGCGCTGCAGTTAAACAATAATGTTATCT CTAATC	Cloning in pMSP3535
pQE ₃₀ - <i>ers</i> HTH	GCGGATCCAAAAGATGCAGCAAAT GTTGAT	CGCGCGCTGCAGTTAAACAATAATGTTATCT CTAATC	Cloning in pQE ₃₀
<i>mad</i> 1F	TCTAGCTAATGTTACGTTACAC		Cloning verification
<i>mad</i> 2R	TCATAATGGGGAAGGCCATC		Cloning verification
<i>Pu</i>	GTTGTAAAACGACGGCCAGT		Cloning verification
<i>Pr</i>	CACAGGAAACAGATATGACC		Cloning verification

^a From the annotated sequence available at <http://www.tigr.org>.

^b Primers used to clone upstream (U) and downstream (D) sequences of *ace* in order to construct a deletion mutant and complemented strain by a double-crossover (DC) event.

C_T value back to the abundance of an mRNA species, the C_T was converted to the n -fold difference by comparing the mRNA abundance in the JH2-2 wild-type strain to that obtained with the Δ ers mutant strain or under different culture conditions. The n -fold difference was calculated by the formula $n = 2^{-x}$ when C_T mutant < C_T JH2-2 and $n = -2^x$ when C_T mutant > C_T JH2-2 with $x = C_T$ mutant - C_T JH2-2. Values greater than 1 reflect a relative increase in mRNA abundance compared to the wild type, and negative values reflect a relative decrease. Statistical comparison of means was performed with Student's t test with values of ΔC_T (C_T gene/ C_T 23S rRNA gene). A relative change of at least 2 and a P value of ≤ 0.05 were considered significant.

With RNA extracted from the wild-type strain, the transcriptional start point of *ace* was determined with the rapid amplification of cDNA ends (RACE) 5'/3' kit (Roche, Mannheim, Germany) according to the manufacturer's instructions.

Overproduction and purification of ErsHTH. The C-terminal part (the last 91 amino acid residues) of the Ers protein (comprising 217 residues), including the helix-turn-helix (HTH) motif (DNA-binding domain), was overproduced and purified as a recombinant protein with a His₆ tag (His₆-ErsHTH) by using the pQE₃₀ expression vector (QIAexpressionist kit, Qiagen).

Gel mobility shift assay. A DNA fragment of about 400 bp including the promoter region of *ace* of *E. faecalis* JH2-2 was inserted into the pGEM-T vector (Promega) and cloned into *E. coli* XLI-Blue (nucleotide -340 to nucleotide +59 relative to the translational start point of *ace*). This was then amplified by PCR with D4-labeled primers Pu and Pr (from the plasmid sequence) (Table 2), generating a 450-bp DNA fragment. The labeled DNA (0.1 μ g) was incubated with purified ErsHTH (1 μ g) in interaction buffer (Tris HCl at 40 mM [pH 7.5], bovine serum albumin at 200 μ g/ml, CaCl₂ at 2 mM, dithiothreitol at 2 mM, poly(dI-dC) at 20 μ g/ml) at room temperature for 30 min in the presence of 0.1 μ g of crude extract from the Δ ers mutant. Samples (0.5 μ g) of unlabeled competitor and noncompetitor DNAs (internal fragment of the ef1843 gene) were used for specificity experiments. After electrophoresis, gels were visualized with the ProXpress scanner (Perkin-Elmer, Waltham, MA).

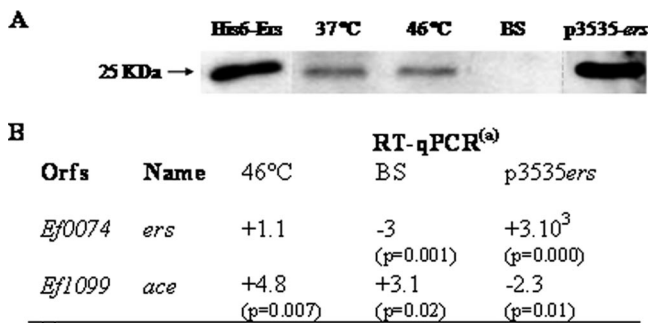
Infection and survival experiments. The in vivo-in vitro model of survival within murine macrophages was carried out as described elsewhere (5, 32).

Infection of *Galleria mellonella* larvae with *E. faecalis* was carried as pre-

viously described by Park et al. (21). Briefly, with a syringe pump (KD Scientific, Holliston, MA), larvae (about 0.3 g and 3 cm in length) were infected subcutaneously with washed *E. faecalis* strains from an overnight culture in M17 ($6 \times 10^6 \pm 0.6 \times 10^6$ CFU per larva) in 10 μ l of sterile saline buffer with a sterilized microsyringe and incubated at 37°C. For one test, 20 insects were used and the experiments were repeated at least three times. *Lactococcus lactis* IL1403 was also tested under the same conditions as a nonvirulent control (4). Larval killing was then monitored at 16, 20, and 24 h postinfection.

For the mouse experiments, female BALB/c mice, 20 to 25 g (Harlan Italy S.r.l.), were housed in filter-top cages with free access to food and water and maintained in the Catholic University Unit for Laboratory Animal Medicine with the approval of an institutional animal use committee. In order to assess the virulence of the Δ ace mutant strain with respect to that of the JH2-2 wild-type strain, two different mouse models were used. In the peritonitis model, experiments were performed according to La Carbona et al. (11) without modifications.

In the urinary tract infection (UTI) model, we followed the protocol described by Singh et al. (29). Briefly, each bacterial strain was grown in 10 ml of brain heart infusion broth supplemented with 40% heat-inactivated horse serum for 10 h at 37°C with shaking. Cells were pelleted, resuspended in 10 ml of sterile saline solution, and then adjusted to a concentration of 1×10^7 /ml. First, groups of five isoflurane-anesthetized mice per bacterial inoculum (10^2 to 10^6 CFU) were infected via intraurethral catheterization (polyethylene catheter, ~4 cm long; outside diameter, 0.61 mm; Becton Dickinson, Sparks, MD) with 200 μ l of each strain suspension. Additionally, groups of 10 mice were infected with a sole inoculum of 10^4 CFU. Mice were sacrificed 48 h after transurethral challenge, and bladders and kidney pairs were excised, weighed, and homogenized in 1 and 5 ml of saline, respectively, with a Stomacher 80 device (PBI International, Italy) for 120 s at high speed. Serial homogenate dilutions were plated onto *Enterococcus* selective agar (Fluka Analytical, Switzerland) for CFU determination. For each strain, the 50% infective dose was determined as previously described (23). The bacterial detection limits were 50 CFU/ml for kidneys and 10 CFU/ml for bladder homogenates. Differences between the total numbers of infected kidney pairs or bladders, obtained by combining all of the inoculum (10^2 to 10^6 CFU)



^(a) Factor of activation or repression determined by RT-qPCR compared to results at 37°C.

FIG. 2. Expression of *ers* and *ace* determined by Western blot or RT-qPCR analysis. (A) Western blot analysis (with antiserum against His-tagged Ers) of *E. faecalis* protein extracts (40 µg) from strain JH2-2 grown at 37°C (lane 2), at 46°C (lane 3), or in the presence of bile salts (lane 4) and from strain JH2-2/p3535ers (lane 5). A 0.1-µg sample of purified His₆-Ers protein was loaded into lane 1. (B) RT-qPCR experiments with the *ers* and *ace* genes and primers described in Table 2. RNAs were extracted from cells cultured under the same conditions used for protein extracts. Values that are significantly different are >2 (*P* < 0.05).

***ace* is directly regulated by Ers.** Electrophoretic mobility shift assays (EMSA) were carried out in order to determine if the regulation of *ace* by Ers is direct or indirect. Our first experiments showed that Ers was able to bind to any fragments of DNA, even nonpromoter regions (data not shown). To improve specificity, we decided to test the interaction properties of the ErsHTH domain, which allows the DNA binding of the protein. His₆-ErsHTH (containing the last 91 amino acid residues of Ers) was thus used for this experiment. As a control, EMSA conducted with the *ers* promoter (known to be regulated by Ers) revealed that this truncated peptide acts as a specific DNA-binding protein (data not shown). After several attempts, we did not obtain any interaction in the *ace* promoter region. We then tried to test the addition of crude extract from the Δ *ers* mutant strain in case any cofactor was necessary for this interaction. Under these conditions, we were able to observe a DNA shift in the presence of His₆-ErsHTH (Fig. 1B and C). Decreasing the amount of His₆-ErsHTH in the binding mixture progressively led to a reduction in the amount of protein-DNA complex and a concomitant increase in the amount of free unbound target DNA (Fig. 1B). Addition of the unlabeled *ace* promoter fragment suppressed the shift of the labeled promoter, revealing a competition for the binding of His₆-ErsHTH (Fig. 1C, lane 3). Moreover, the specificity of this interaction was confirmed by the addition of a nonspecific DNA fragment (Fig. 1C, lane 4). This demonstrated that, in the presence of crude extract, His₆-ErsHTH binds in a specific manner to the promoter region of *ace*.

***ers* and *ace* regulation under stress conditions.** Production of Ace has been shown to be modified by environmental conditions (15, 28), but no data were available concerning Ers. We performed Western blot analysis with anti-Ers polyclonal antibodies in order to determine the quantity of Ers under different growth conditions (37°C, 46°C, and 0.08% bile salts) (Fig. 2A). In parallel, we used RT-qPCR to show the relative changes in *ers* and *ace* at the transcriptional level (Fig. 2B). It appeared that, in

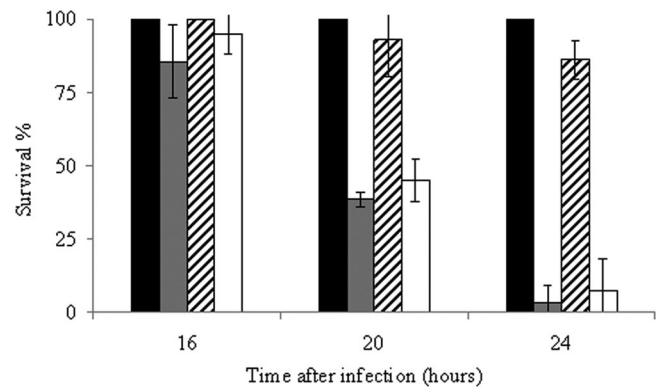


FIG. 3. Effect of *ace* inactivation on virulence. Percent survival of *G. mellonella* larvae at 16, 20, and 24 h after infection with *L. lactis* IL1403 (black bar), *E. faecalis* JH2-2 (gray bar), the JH2-2 Δ *ace* mutant (hatched bar), and the complemented Δ *ace* mutant strain (white bar). We used 6×10^6 CFU counted on an agar plate per injection. Experiments were repeated at least three times, and the results represent the mean \pm standard deviation of live larvae.

contrast to *ace* expression (induced 4.8-fold), growth at 46°C did not affect that of *ers* (Fig. 2A and B). However, when cells were cultivated in the presence of 0.08% bile salts, Ers was undetectable and we measured a decrease in *ers* expression (threefold reduction) (Fig. 2A and B). Interestingly, in parallel to this *ers* repression, induction of *ace* transcription was observed (+3.1-fold) (Fig. 2B). These combined results were in strong agreement with the negative regulation of *ace* by Ers but also revealed that bile salts were environmental stimuli recognized by Ers and hence may also affect *ace* expression.

The *ace* deletion decreased the virulence of *E. faecalis*. To determine whether the absence of Ace affects the virulence of *E. faecalis*, we compared the capabilities of the wild-type and Δ *ace* mutant strains to kill *G. mellonella* larvae in infection experiments. As shown in Fig. 3 the rate of killing was significantly lower in larvae infected with the Δ *ace* mutant strain than in those infected with wild-type JH2-2. After 24 h of infection, less than 10% of the wild-type-infected larvae were still alive, whereas 80% of the animals infected with the mutant strain had survived (*P* = 9×10^{-5}) (Fig. 3). The nonpathogenic gram-positive bacterium *L. lactis* IL1403 was used as a control; all of the larvae infected with this organism survived. Experiments conducted with the complemented Δ *ace* mutant strain, in which virulence was restored to the wild-type level, confirmed that the observed phenotype was due to the unique deletion of *ace* (Fig. 3). Note that the generation time of *E. faecalis* JH2-2, the Δ *ace* mutant, and the complemented Δ *ace* mutant strain in GM17 at 37°C was the same (36 min).

The *E. faecalis* Δ *ace* mutant is less phagocytosed and is affected in its ability to survive within macrophages. Phagocytic cells constitute an important part of the innate immunity against pathogens. To determine whether the Δ *ace* mutant strain was impaired at this stage of infection, wild-type JH2-2 and the Δ *ace* mutant strain were tested in an in vivo-in vitro macrophage infection model (5). At 8 h postinfection, the number of Δ *ace* mutant bacteria recovered was weakly but significantly reduced compared to that of the JH2-2 strain (>1 log₁₀, *P* < 0.05), suggesting that this mutant was less phagocy-

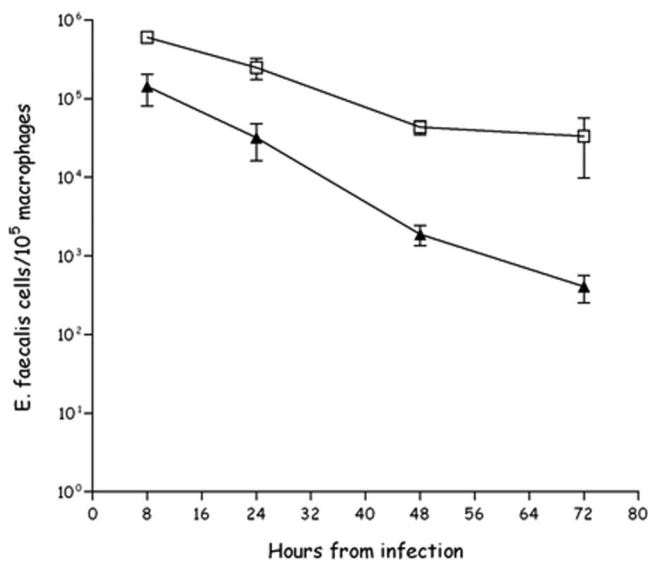


FIG. 4. Time course of intracellular survival of *E. faecalis* JH2-2 (squares) and the Δace mutant (triangles) within murine peritoneal macrophages. The results shown represent the mean number \pm the standard deviation of viable intracellular bacteria per 10^5 macrophages of three independent experiments with three wells.

tosed (Fig. 4). The difference in survival between the Δace mutant and the wild type increased for 72 h after infection ($>2.5 \log_{10}$, $P < 0.05$), indicating a lower survival rate of the Δace mutant strain in mouse macrophages (Fig. 4). No phenotype has been observed upon exposure to lysozyme (at 15 or 20 mg/ml) or 2 mM H_2O_2 (data not shown). However, our results suggest that Ace may promote *E. faecalis* in vivo phagocytosis and that it may be, at least in part, involved in the resistance to deleterious effects encountered inside phagocytic cells.

Ace is involved in UTI. In the peritonitis model, the JH2-2 and Δace mutant strains of *E. faecalis* showed similar killing rates (data not shown). Thus, the same strains were also tested by using a recently established UTI model (29) to evaluate if the *ace* gene is involved in this type of infection. The resulting 50% infective doses showed that the Δace mutant strain requires $\sim 0.9 \log_{10}$ more cells to infect 50% of the mice than did the JH2-2 wild-type strain (4.7×10^3 versus 6.9×10^2), thereby suggesting that *ace* is involved in UTI infection. The percentage of kidneys of mice infected for all of the bacterial inocula used was 84% for the JH2-2 wild-type strain and 60% for the Δace mutant strain ($P = 0.02$). Also, the cumulative difference between the percentages of bladders infected with the two strains was similar to that between the percentages of kidneys infected (71% for JH2-2 versus 46% for the Δace mutant, $P = 0.037$). Figure 5 shows the \log_{10} CFU counts recovered from the kidney pairs ($n = 15$) of mice infected with 10^4 JH2-2 or Δace cells. The Δace mutant caused a statistically significantly lower ($-1.89 \log_{10}$, $P = 0.0371$) kidney tissue burden than did the JH2-2 wild-type strain.

DISCUSSION

Ers is a transcriptional regulator with similarities to PrfA, the major positive regulator of virulence genes in *L. monocy-*

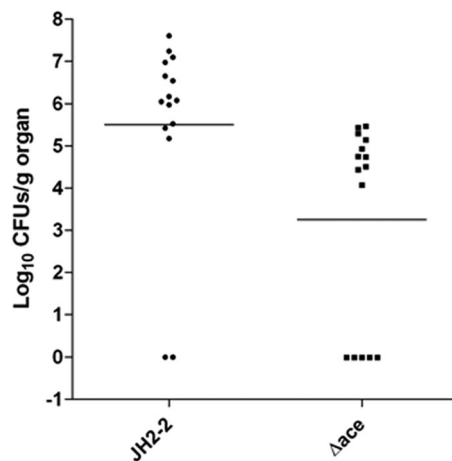


FIG. 5. Infection with 10^4 cells of wild-type *E. faecalis* JH2-2 (●) and its isogenic Δace mutant strain (■). Kidney pair homogenates were obtained from groups of 15 mice that were sacrificed and necropsied 48 h after a transurethral challenge. Results are expressed as \log_{10} CFU per gram of tissue. A value of 0 was assigned to uninfected kidneys. Horizontal bars represent the geometric means.

togenes (24). A recent study showed that Ers has a pleiotropic effect, especially on the cellular metabolism (arginine and citrate), as well as in the virulence, of *E. faecalis* (25). An alignment of the promoter regions recognized by Ers allowed the characterization of a putative consensus sequence (AACATT TGTTG) (25). However, this sequence is sometimes very divergent from the consensus and not systematically located in the DNA fragment that interacts with the regulator. We suspect that the Ers box could play a role in Ers binding, but it seems that its presence should not be a sine qua non condition. A genome survey permitted the identification of several regulatory regions potentially recognized by Ers. Of these, *ace* was the sole new gene the transcription of which was modified in the Δers mutant strain during the exponential growth phase. This pointed out that the Ers box consensus sequence needs to be more precisely defined, but we cannot exclude the possibility that Ers could regulate the expression of other genes in different growth phases or under stress conditions. Our gel shift assay revealed a direct interaction between ErsHTH and the promoter region of *ace*, allowing the first identification of a regulator of this gene. Surprisingly, no interaction has been observed between the DNA-binding domain of Ers and the promoter of *ace* without the addition of crude bacterial cell extract. This suggests that a cellular cofactor is required for the full activity of Ers. Because EMSA experiments have been performed with a truncated protein harboring the HTH DNA-binding motif, this unknown cofactor interacts with this C-terminal part of the regulator. However, in footprinting experiments, Ers has been shown to bind promoter regions of *ers*, *ef0082*, *ef1459*, and *arcABC* in the absence of cell extract (25). Similar results were obtained with ArcR of *S. aureus* (another Crp/Fnr regulator) where cyclic AMP is only required for binding to the *lctE* (encodes lactate dehydrogenase) regulatory region (12). Of the genes in the Ers regulon hitherto identified, *ace* is the only one negatively regulated by Ers. It may be speculated that additional cellular factors are necessary for repressor activity but not for activator activity. Further identi-

fication of Ers-regulated genes will perhaps confirm this hypothesis.

Expression of *ace* depends on environmental factors such as temperature (46°C) and the presence of collagen, serum, and urine (15, 28). Recent work shows that serum components play an important role as host environmental stimuli to induce the production of ECM protein-binding adhesins (15). Moreover, anti-Ace antibodies have been found in almost every serum sample collected from patients with enterococcal systemic infections, indicating that the biological environment is an efficient inducer of *ace* (17). We showed that the *ace* mRNA transcription level was also increased by bile salts, and it is tempting to speculate that this regulation may depend on Ers. Ers acted as a repressor of *ace*, and downregulation of *ers* by bile salts could stimulate the transcription of *ace*. *E. faecalis* is naturally present in the gastrointestinal tract and has to cope with substances like bile, so we can hypothesize that the induction of *ace* by bile salts may have an impact on the colonization of the gastrointestinal tract by *E. faecalis*. Other stimuli like 46°C and the presence of collagen or serum did not affect the Ers level (data not shown), so it is likely that, under these conditions, another regulator(s) is involved in the transcriptional regulation of *ace*.

Larvae of the greater wax moth *G. mellonella* are now frequently used to evaluate microbial pathogenicity since their innate immune response shows strong structural and functional homology with mammals system (10). This model has been recently used to show that the well-known virulence factor GelE (extracellular gelatinase) of *E. faecalis* degrades an antimicrobial peptide, destroying the defense system in insect hemolymph (21). As shown in our study, the Δace mutant strain displayed an obvious decrease in virulence. Although Cna (the staphylococcal adhesin, homologous to Ace) is well characterized as a virulence factor (34), this study is the first evidence that Ace is not only involved in the interaction with ECM but is also a virulence factor in *E. faecalis*. These observations may be correlated with the reduced ability of the Δace mutant to survive within macrophages in comparison to that of the wild type. Similar results have been observed with ElrA and aggregation substance, other surface proteins of *E. faecalis* involved in the virulence process and intramacrophage survival (2, 7). In addition, Δace mutant strain bacterial counts recovered from macrophages at 8 h postinfection were reduced compared to those of the wild type. This suggests that Ace may also have a role in phagocytosis in vivo and is in agreement with data from Tomita and Ike, who found that bacterial cells of *E. faecalis* that adhere to ECM proteins also show high adhesion to human cells (bladder carcinoma T24) (31). We showed recently that Ers is involved in the ability of *E. faecalis* to survive within macrophages and in full virulence in a mouse peritonitis model (6, 25). These results seemed to be in contrast to the deregulation of *ace* in the *ers* mutant, since Ers acts as a repressor. So, despite the overexpression of *ace*, other members of the Ers regulon need to be identified in order to explain why the *ers* mutant is less virulent.

Like the collagen adhesin Acm of *E. faecium* or Ebp (endocarditis- and biofilm-associated pilus) of *E. faecalis*, which is another member of the MSCRAMM family (29), Ace did not seem to be involved in mouse killing in a peritonitis model (data not shown). However, in the murine UTI model, Ebp

and Ace are two adhesion-related proteins that allow attachment to and colonization of host renal tissue (29; this study). *E. faecalis* is a common agent of UTI, and our results confirm that an enterococcal MSCRAMM protein such as Ace may be a valuable drug target against human UTI.

ACKNOWLEDGMENTS

The expert technical assistance of Annick Blandin, Isabelle Rincé, Marie-Jeanne Pigny, and Patricia Marquet was greatly appreciated. We thank A. Benachour, S. Gente, J.-M. Laplace, V. Pichereau, A. Rincé, and N. Sauvageot for helpful discussions. We thank Mike Gilmore for providing DNA microarrays. We also thank Christina Nielsen-LeRoux's group for its help in experiments with *G. mellonella*.

REFERENCES

1. Arnaud, M., A. Chastanet, and M. Débarbouillé. 2004. New vector for efficient allelic replacement in naturally nontransformable, low-GC-content, gram-positive bacteria. *Appl. Environ. Microbiol.* **70**:6887–6891.
2. Brinster, S., B. Posteraro, H. Bierne, A. Alberti, S. Makhzami, M. Sanguinetti, and P. Serror. 2007. Enterococcal leucine-rich repeat-containing protein involved in virulence and host inflammatory response. *Infect. Immun.* **75**:4463–4471.
3. Bryan, E. M., T. Bae, M. Kleerebezem, and G. M. Dunny. 2000. Improved vectors for nisin-controlled expression in gram-positive bacteria. *Plasmid* **44**:183–190.
4. Chopin, A., M. C. Chopin, A. Moillo-Batt, and P. Langella. 1984. Two plasmid-determined restriction and modification systems in *Streptococcus lactis*. *Plasmid* **11**:260–263.
5. Gentry-Weeks, C. R., R. Karkhoff-Schweizer, A. Pikiš, M. Estay, and J. M. Keith. 1999. Survival of *Enterococcus faecalis* in mouse peritoneal macrophages. *Infect. Immun.* **67**:2160–2165.
6. Giard, J.-C., E. Riboulet, N. Verneuil, M. Sanguinetti, Y. Auffray, and A. Hartke. 2006. Characterization of Ers, a PrfA-like regulator of *Enterococcus faecalis*. *FEMS Immunol. Med. Microbiol.* **46**:410–418.
7. Gilmore, M. S., P. S. Coburn, S. R. Nallapareddy, and B. E. Murray. 2002. Enterococcal virulence, p. 301–354. In M. S. Gilmore (ed.), *The enterococci: pathogenesis, molecular biology, and antibiotic resistance*. American Society for Microbiology, Washington, DC.
8. Hall, A. E., E. L. Gorovits, P. J. Syrbeyes, P. J. Domanski, B. R. Ames, C. Y. Chang, J. H. Vernachio, J. M. Patti, and J. T. Hutchins. 2007. Monoclonal antibodies recognizing the *Enterococcus faecalis* collagen-binding MSCRAMM Ace: conditional expression and binding analysis. *Microb. Pathog.* **43**:55–66.
9. Jacob, A. E., and S. J. Hobbs. 1974. Conjugal transfer of plasmid-borne multiple antibiotic resistance in *Streptococcus faecalis* var. *zymogenes*. *J. Bacteriol.* **117**:360–372.
10. Kavanagh, K., and E. P. Reeves. 2004. Exploiting the potential of insects for in vivo pathogenicity testing of microbial pathogens. *FEMS Microbiol. Rev.* **28**:101–112.
11. La Carbona, S., N. Sauvageot, J.-C. Giard, A. Benachour, B. Posteraro, Y. Auffray, M. Sanguinetti, and A. Hartke. 2007. Comparative study of the physiological roles of three peroxidases (NADH peroxidase, alkyl hydroperoxide reductase and thiol peroxidase) in oxidative stress response, survival inside macrophages and virulence of *Enterococcus faecalis*. *Mol. Microbiol.* **66**:1148–1163.
12. Makhlin, J., T. Kofman, I. Borovok, C. Kohler, S. Engelmann, G. Cohen, and Y. Aharonowitz. 2007. *Staphylococcus aureus* ArcR controls expression of the arginine deiminase operon. *J. Bacteriol.* **189**:5976–5986.
13. Murray, B. E. 1990. The life and times of the enterococcus. *Clin. Microbiol. Rev.* **3**:46–65.
14. Nallapareddy, S. R., and B. E. Murray. 2006. Ligand-signaled upregulation of *Enterococcus faecalis ace* transcription, a mechanism for modulating host-*E. faecalis* interaction. *Infect. Immun.* **74**:4982–4989.
15. Nallapareddy, S. R., and B. E. Murray. 2008. Role played by serum, a biological cue, in the adherence of *Enterococcus faecalis* to extracellular matrix proteins, collagen, fibrinogen, and fibronectin. *J. Infect. Dis.* **197**:1728–1736.
16. Nallapareddy, S. R., X. Qin, G. M. Weinstock, M. Hook, and B. E. Murray. 2000. *Enterococcus faecalis* adhesin, Ace, mediates attachment to extracellular matrix proteins collagen type IV and laminin as well as collagen type I. *Infect. Immun.* **68**:5218–5224.
17. Nallapareddy, S. R., K. V. Singh, R. W. Duh, G. M. Weinstock, and B. E. Murray. 2000. Diversity of *ace*, a gene encoding a microbial surface component recognizing adhesive matrix molecules, from different strains of *Enterococcus faecalis* and evidence for production of Ace during human infections. *Infect. Immun.* **68**:5210–5217.
18. Nallapareddy, S. R., K. V. Singh, and B. E. Murray. 2008. Contribution of the collagen adhesin, Acm, to pathogenesis of *Enterococcus faecium* in experimental endocarditis. *Infect. Immun.* **76**:4120–4128.

19. Nilsson, I. M., J. M. Patti, T. Bremell, M. Hook, and A. Tarkowski. 1998. Vaccination with a recombinant fragment of collagen adhesin provides protection against *Staphylococcus aureus*-mediated septic death. *J. Clin. Investig.* **101**:2640–2649.
20. Ogier, J. C., and P. Serror. 2008. Safety assessment of dairy microorganisms: the *Enterococcus* genus. *Int. J. Food Microbiol.* **126**:291–301.
21. Park, S. Y., K. M. Kim, J. H. Lee, S. J. Seo, and I. H. Lee. 2007. Extracellular gelatinase of *Enterococcus faecalis* destroys a defense system in insect hemolymph and human serum. *Infect. Immun.* **75**:1861–1869.
22. Paulsen, I. T., L. Banerjee, G. S. A. Myers, K. E. Nelson, R. Seshadri, T. D. Read, D. E. Fouts, J. A. Eisen, S. R. Gill, J. F. Heidelberg, H. Tettelin, R. J. Dodson, L. Umayam, L. Brinkac, M. Beanan, S. Daugherty, R. T. DeBoy, S. Durkin, J. Kolonay, R. Madupu, W. Nelson, J. Vamathevan, B. Tran, J. Upton, T. Hansen, J. Shetty, H. Khouri, T. Utterback, D. Radune, K. A. Ketchum, B. A. Dougherty, and C. M. Fraser. 2003. Role of mobile DNA in the evolution of vancomycin-resistant *Enterococcus faecalis*. *Science* **299**:2071–2074.
23. Reed, L. J., and H. Muench. 1938. A simple method of estimating fifty percent end points. *Am. J. Hyg.* **27**:493–497.
24. Riboulet-Bisson, E., A. Le Jeune, A. Benachour, Y. Auffray, A. Hartke, and J.-C. Giard. 2009. *Ers* a Crp/Fnr-like transcriptional regulator of *Enterococcus faecalis*. *Int. J. Food Microbiol.* **131**:71–74.
25. Riboulet-Bisson, E., M. Sanguinetti, A. Budin-Verneuil, Y. Auffray, A. Hartke, and J.-C. Giard. 2008. Characterization of the *Ers* regulon of *Enterococcus faecalis*. *Infect. Immun.* **76**:3064–3074.
26. Rich, R. L., B. Kreikemeyer, R. T. Owens, S. LaBrenz, S. V. L. Narayana, G. M. Weinstock, B. E. Murray, and M. Höök. 1999. *Ace* is a collagen-binding MSCRAMM from *Enterococcus faecalis*. *J. Biol. Chem.* **274**:26939–26945.
27. Sambrook, J., E. F. Fritsch, and T. Maniatis. 1989. *Molecular cloning: a laboratory manual*, 2nd ed. Cold Spring Harbor Laboratory Press, Cold Spring Harbor, NY.
28. Shepard, B. D., and M. S. Gilmore. 2002. Differential expression of virulence-related genes in *Enterococcus faecalis* in response to biological cues in serum and urine. *Infect. Immun.* **70**:4344–4352.
29. Singh, K. V., S. R. Nallapareddy, and B. E. Murray. 2007. Importance of endocarditis and biofilm associated pilus (*ebp*) locus in the pathogenesis of *Enterococcus faecalis* ascending urinary tract infection. *J. Infect. Dis.* **195**:1671–1677.
30. Terzaghi, B. E., and W. E. Sandine. 1975. Improved medium for lactic streptococci and their bacteriophages. *Appl. Microbiol.* **29**:807–813.
31. Tomita, H., and Y. Ike. 2004. Tissue-specific adherent *Enterococcus faecalis* strains that show highly efficient adhesion to human bladder carcinoma T24 cells also adhere to extracellular matrix proteins. *Infect. Immun.* **72**:5877–5885.
32. Verneuil, N., M. Sanguinetti, Y. Le Breton, B. Posteraro, G. Fadda, Y. Auffray, A. Hartke, and J.-C. Giard. 2004. Effects of *Enterococcus faecalis hypR* gene encoding a new transcriptional regulator on oxidative stress response and intracellular survival within macrophages. *Infect. Immun.* **72**:4424–4431.
33. Wisplinghoff, H., T. Bischoff, S. M. Tallent, H. Seifert, R. P. Wenzel, and M. B. Edmond. 2004. Nosocomial bloodstream infections in US hospitals: analysis of 24,179 cases from a prospective nationwide surveillance study. *Clin. Infect. Dis.* **39**:309–317.
34. Xu, Y., J. M. Rivas, E. L. Brown, X. Liang, and M. Hook. 2004. Virulence potential of the staphylococcal adhesin CNA in experimental arthritis is determined by its affinity for collagen. *J. Infect. Dis.* **189**:2323–2333.
35. Yagi, Y., and D. B. Clewell. 1980. Recombination-deficient mutant of *Streptococcus faecalis*. *J. Bacteriol.* **143**:966–970.
36. Zhou, H., Z. Y. Xiong, H. P. Li, Y. L. Zheng, and Y. Q. Jiang. 2006. An immunogenicity study of a newly fusion protein Cna-FnBP vaccinated against *Staphylococcus aureus* infections in a mice model. *Vaccine* **24**:4830–4837.

Editor: A. Camilli