



HAL
open science

Unravelling the origin and introduction pattern of the tropical species *Paracaprella pusilla* Mayer, 1890 (Crustacea, Amphipoda, Caprellidae) in temperate European waters: first molecular insights from a spatial and temporal perspective

Pilar Cabezas, Macarena Ros, António Múrias Dos Santos, Gemma Martínez-Laiz, Raquel Xavier, Lou Montelli, Razy Hoffman, Abir Fersi, Jean-Claude Dauvin, José Manuel Guerra-García

► **To cite this version:**

Pilar Cabezas, Macarena Ros, António Múrias Dos Santos, Gemma Martínez-Laiz, Raquel Xavier, et al.. Unravelling the origin and introduction pattern of the tropical species *Paracaprella pusilla* Mayer, 1890 (Crustacea, Amphipoda, Caprellidae) in temperate European waters: first molecular insights from a spatial and temporal perspective. *NeoBiota*, 2019, 47, pp.43-80. <10.3897/neobiota.47.32408>. <hal-02164520>

HAL Id: hal-02164520

<https://normandie-univ.hal.science/hal-02164520v1>

Submitted on 25 Jun 2019

HAL is a multi-disciplinary open access archive for the deposit and dissemination of scientific research documents, whether they are published or not. The documents may come from teaching and research institutions in France or abroad, or from public or private research centers.

L'archive ouverte pluridisciplinaire HAL, est destinée au dépôt et à la diffusion de documents scientifiques de niveau recherche, publiés ou non, émanant des établissements d'enseignement et de recherche français ou étrangers, des laboratoires publics ou privés.



HAL Authorization

Unravelling the origin and introduction pattern of the tropical species *Paracaprella pusilla* Mayer, 1890 (Crustacea, Amphipoda, Caprellidae) in temperate European waters: first molecular insights from a spatial and temporal perspective

M. Pilar Cabezas¹, Macarena Ros², António Múrias dos Santos^{1,3},
Gemma Martínez-Lañiz⁴, Raquel Xavier¹, Lou Montelli⁵, Razy Hoffman⁶,
Abir Fersi^{7,8}, Jean Claude Dauvin⁸, José Manuel Guerra-García⁴

1 CIBIO, Centro de Investigação em Biodiversidade e Recursos Genéticos, Universidade do Porto, Rua Padre Armando Quintas nº7, 4485-661, Vairão, Portugal **2** Departamento de Biología, CASEM, Facultad de Ciencias del Mar y Ambientales, Universidad de Cádiz, Campus Universitario de Puerto Real, 11510, Puerto Real, Cádiz, Spain **3** Faculdade de Ciências da Universidade do Porto, Rua do Campo Alegre s/n, 4169-007, Porto, Portugal **4** Laboratorio de Biología Marina, Departamento de Zoología, Facultad de Biología, Universidad de Sevilla, Avda. Reina Mercedes 6, 41012, Seville, Spain **5** Maritime Platforms Division, Department of Defence, Defence Science and Technology Organisation, Fishermans Bend Victoria, P.O. Box 4331, Melbourne, VIC 3001, Australia **6** The Steinhardt Museum of Natural History, Israel National Center for Biodiversity Studies, Tel Aviv University, Tel Aviv 69978, Israel **7** Laboratoire de Biodiversité et Ecosystèmes Aquatiques, Faculté des Sciences de Sfax, Université de Sfax, BP 1171, 3038, Sfax, Tunisia **8** Normandie Université, UNICAEN, Laboratoire Morphodynamique Continentale et Côtière, CNRS, UMR 6143 M2C, 24 Rue des Tilleuls, 14000 Caen, France

Corresponding author: M. Pilar Cabezas (pilarcabezas@cibio.up.pt)

Academic editor: Adam Petrussek | Received 9 January 2019 | Accepted 6 May 2019 | Published 20 June 2019

Citation: Cabezas MP, Ros M, Santos AM, Martínez-Lañiz G, Xavier R, Montelli L, Hoffman R, Fersi A, Dauvin JC, Guerra-García JM (2019) Unravelling the origin and introduction pattern of the tropical species *Paracaprella pusilla* Mayer, 1890 (Crustacea, Amphipoda, Caprellidae) in temperate European waters: first molecular insights from a spatial and temporal perspective. NeoBiota 47: 43–80. <https://doi.org/10.3897/neobiota.47.32408>

Abstract

Paracaprella pusilla Mayer, 1890 is a tropical caprellid species recently introduced to the Eastern Atlantic coast of the Iberian Peninsula and the Mediterranean Sea. In this study, we used direct sequencing of mitochondrial (COI and 16S) and nuclear (28S and ITS) genes to compare genetic differences in presumed native and introduced populations in order to infer its introduction pattern and to shed light on the native range of this species. The temporal pattern of genetic diversity at the westernmost limit of the

geographic range of *P. pusilla* in Europe (the Atlantic coast of southern Spain) over an eight-year period was also investigated. Our results confirm *P. pusilla* as a neocosmopolitan species and suggest that the species is native to the Atlantic coast of Central and South America. *Paracaprella pusilla* seems to have been introduced into European waters from multiple introduction pathways and source populations, which are likely to include populations from coastal waters of Brazil. Multiple introduction pathways may have been involved, with the most important being commercial shipping through the Strait of Gibraltar. While this tropical species appears to be expanding in the Mediterranean, populations from the westernmost limit of its geographic range in Europe showed a temporal instability. This study constitutes the first molecular approach focused on this species, but it is also the first study of temporal change in genetic diversity of any introduced marine amphipod. Additional intensive sampling of this species, including both native and non-native populations, and detailed temporal studies are still necessary to properly understand how genetic diversity influences the introduction and survival of *P. pusilla* in invaded areas.

Keywords

Caprellid amphipod; founder effect; genetic diversity; global change; multiple introduction pathways; population genetics; temporal fluctuations.

Introduction

Non-indigenous species (NIS) are a fundamental component of global change and are currently considered one of the most important drivers of biodiversity alteration in marine ecosystems worldwide (Bax et al. 2003; Molnar et al. 2008). Some NIS successfully establish themselves, form self-sustaining populations, and spread into new locations, becoming invasive and causing both significant ecological and economic impacts (Molnar et al. 2008). They may out-compete native species and alter community structure and ecosystem processes. They may also threaten ecosystem services, which may result in significant economic losses in fisheries, aquaculture, and tourism sectors (Davidson et al. 2015; Ojaveer et al. 2015; Katsanevakis et al. 2016).

Marine organisms have been spread by human-mediated transport long before the first comprehensive biological studies were carried out (Carlton 1999, 2003). However, the ever-increasing magnitude and efficiency of global maritime trade and associated transported vectors, as well as rising seawater temperatures associated with global climate change, are drastically increasing the spread of NIS (Ruiz et al. 1997; Carlton and Cohen 2003; Katsanevakis et al. 2013; Booth et al. 2017).

Europe, where approximately 1500 NIS have been introduced, is the major recipient of marine NIS worldwide (Katsanevakis et al. 2014; AquaNIS 2015; Tsiamis et al. 2018). Consequently, legislation mostly rooted in the Marine Strategy Framework Directive (MSFD) (EC 2008) and the Biodiversity Strategy (EC 2014) has been adopted to deal with NIS and, thus, protect, conserve, or enhance marine ecosystems. These strategies aim to mitigate or reverse the impacts of existing NIS and prevent future introduction and the establishment of new ones by identifying and managing introduction pathways, among other things. In this regard, genetic data have been recognized as a powerful and useful tool (Holland 2000; Geller et al. 2010; Rius et al. 2015). The study of the genetic structure and degree of gene flow within and between

native and non-native populations specifically provides crucial insights into the pattern of introduction, colonization, and spread of introduced taxa (Geller et al. 2010; Rius et al. 2015). Such studies help to determine source populations (Rius et al. 2015) and provide insights into the invasive potential of species (Roman and Darling 2007), and, thus, can lead to a better understanding of the mechanisms and dynamics underlying introduction and invasion. Such information can be used to prioritize management strategies, to prevent further introduction events, and to assess the abundance and status of NIS.

Nonetheless, most genetic studies on NIS have focused on terrestrial and freshwater organisms (Lowry et al. 2013; Sherman et al. 2016; Viard et al. 2016), likely due to the logistics of sampling in the marine environment, which make it difficult to obtain reliable neutral population estimates (Sherman et al. 2016). Therefore, more research is needed to improve our knowledge of marine NIS and better understand the patterns of their introduction and invasion. On this subject, hotspots and stepping-stone areas for these species (e.g. marinas, aquaculture installations) and zones of special interest such as marine reserves or NATURA 2000 sites, should be prioritized (Olenin et al. 2010). In European waters, the Mediterranean Sea and the region of the Strait of Gibraltar deserve special attention, as they are considered hotspots for both biodiversity and biological invasions (Drake and Lodge 2004; Molnar et al. 2008; Boudouresque et al. 2017). Indeed, the Mediterranean Sea hosts the highest documented number of marine NIS globally, with around 900 NIS recorded so far (Ulman et al. 2017; Zenetos et al. 2017; Galil et al. 2018). Both the Mediterranean Sea and the Strait of Gibraltar have important shipping links to other areas worldwide, intense aquaculture activity, and are among the most important destinations for tourism worldwide, with many vessels arriving from America and northern Europe as well as from the Indo-Pacific via the Suez Canal (Streftaris et al. 2005; Galil et al. 2017; Tsiamis et al. 2018).

Crustaceans are among the most introduced taxa worldwide (Carlton 2011). In the Mediterranean Sea and nearby areas, they account nearly 20% of all reported NIS (Zenetos et al. 2012; Ulman et al. 2017). Within crustaceans, caprellid amphipods associated with fouling communities of artificial habitats are considered as prime candidates for introduction and establishment in regions where they are not native (Ashton et al. 2010; Ros et al. 2016a). The great abundances that some caprellids attain in these communities and their ability to survive on floating objects and vessel hulls (Thiel et al. 2003; Ashton et al. 2010) make them good models for understanding marine introductions and invasions. Thus, the number of introduced species belonging to this group have been documented worldwide with increasing frequency (e.g. Ros et al. 2016a; Gillon et al. 2017; Marchini and Cardecia 2017).

Three non-indigenous species of caprellids have been recorded in temperate European seas: *Caprella mutica* Schurin, 1935 (Ashton 2006; Almón et al. 2014), *Caprella scaura* Templeton, 1836 (Sconfietti and Danesi 1996; Martinez and Adarraga 2008), and *Paracaprella pusilla* Mayer, 1890 (Ros and Guerra-García 2012; Ros et al. 2016a). While the dynamics of invasion by *C. mutica* and *C. scaura* have been explored through molecular tools (Ashton et al. 2008; Cabezas et al. 2014), there are no similar studies for *P. pusilla*.

Paracaprella pusilla is a tropical caprellid species first described from Brazil (type locality: Rio de Janeiro) (Mayer 1890). Nonetheless, the native range of this species is not entirely clear (Farrapeira et al. 2011; Rocha et al. 2013). Some authors have considered the Atlantic coast of Central and South America as the most likely native range of this species (Mayer 1903; McCain 1968; Carlton and Eldredge 2009; Rocha et al. 2013). *Paracaprella pusilla* is frequently found in the Caribbean (Carlton and Eldredge 2009), with most records coming from the Gulf of Mexico and the coasts of Venezuela and Colombia (Díaz et al. 2005; Guerra-García 2006; Winfield et al. 2006). However, other authors have considered *P. pusilla* to be cryptogenic, sensu Carlton (1996), in this region (Serejo 1998; Farrapeira et al. 2011). Since its original description, *P. pusilla* has been reported from numerous other tropical and subtropical areas around the world, including both the East and West African coasts, the Indian peninsula, Australia, and Hawaii (see Ros and Guerra-García 2012 and references therein), mainly on fouling communities associated with artificial structures. Today, the known distribution of *P. pusilla* also includes the Pacific coasts of Panama (Ros et al. 2014), Mexico (Alarcón-Ortega et al. 2015), and Costa Rica (Alfaro-Montoya and Ramírez-Alvarado 2018), in addition to temperate European waters. Its first recorded occurrence (2010) in Europe was at Cádiz on the Atlantic coast of southwestern Spain (Ros and Guerra-García 2012). Soon afterwards, this species was first found in the western Mediterranean at Mallorca (2011) and Ibiza in August 2012 (Ros et al. 2013c). In 2014, several individuals of *P. pusilla* were found at Zikim on the southern coast of Israel, the first record of this species in the eastern Mediterranean Sea (Ros et al. 2016a). Most recently, *P. pusilla* has been reported in the central Mediterranean, in the Gulf of Gabès in tidal channels of the Kneiss archipelago (Tunisia) (Fersi et al. 2018). Thus, by its presence in western, central, and eastern regions of the Mediterranean, we suggest that *P. pusilla* might be present more generally throughout the Mediterranean and that it might have been overlooked due to its small size or temporal instability.

Two main pathways have been suggested for the introduction of *P. pusilla* to European waters. Ship fouling is the most probable vector for the introduction and dispersion of this species (Ros and Guerra-García 2012; Ros et al. 2013b, c), either through the Strait of Gibraltar, from source populations in Central and South America, where it is supposedly native, or via the Suez Canal, from the Indo-Pacific. This second alternative is less likely because *P. pusilla* has not yet been found in the Red Sea (Zeina and Guerra-García 2016) and has only been reported once in the Suez Canal (Schellenberg 1928) despite recent studies (see El-Komi 1998; Emara and Belal 2004; Zeina and Guerra-García 2016). These pathways are only assumptions based on historical records of *P. pusilla*. No molecular studies have been conducted to elucidate the introduction and dispersion patterns of this species.

Another question that remains genetically unexplored is whether *P. pusilla* is indeed a cosmopolitan species or if populations across its presumed large range belong to different cryptic species. In the order Amphipoda, molecular evidence supports the existence of cryptic species among widely distributed marine NIS, such as *Ampithoe valida* Smith, 1873 and *Jassa marmorata* Holmes, 1905, two biofouling species introduced to the Northeast Pacific (Pilgrim and Darling 2010). Nevertheless,

other NIS are actually widely distributed (no cryptic species); examples include the caprellids *Caprella mutica* and *Caprella scaura* sensu stricto (Ashton et al. 2008; Cabezas et al. 2014). Morphological evidence supports the conspecificity of populations of *P. pusilla* (Ros et al. 2014), but molecular evidence is still needed to confirm *P. pusilla* as a neocosmopolitan species (introduced species that have achieved a widespread distribution through anthropogenic dispersal; sensu Darling and Carlton 2018).

In this study, we analysed the genetic diversity, population structure, and levels of differentiation of populations of *P. pusilla* from its presumed native and introduced distribution ranges. We sequenced mitochondrial and nuclear genes of *P. pusilla* in order to (i) provide the first molecular evidence to verify the conspecificity of populations; (ii) shed light on this species' native range, and (iii) to infer its introduction pattern in temperate European waters, particularly on the Iberian Peninsula. In addition, we analysed the temporal pattern of genetic diversity at Cadiz marina, which is the westernmost limit of the range of *P. pusilla* in Europe, beginning soon after its first detection and for a period of eight years. We use the Cadiz marina as a model for understanding how genetic diversity influences the introduction process of this tropical NIS into new areas where it previously could not survive. This information is crucial to better understanding the initial phases of marine introductions and identifying the factors associated with it. Additionally, this information allows for the better understanding of possible future invasions to other localities on the Atlantic coasts of Europe in the scenario of global warming, and, thus, it provides valuable information for the effective management of introduced species. As far as we know, this is the first study of temporal change in genetic diversity of an introduced marine amphipod.

Methods

Sample collection

Spatial sampling. A total of 230 specimens of *P. pusilla* were collected from 12 localities across its presumed native and introduced geographic ranges, including from the type locality at Rio de Janeiro and the whole of its introduced range in Europe (Table 1). Unfortunately, the Indo-Pacific region was represented only by a single sample from Australia. The greater number of individuals collected at Spanish localities is the result of our continuous monitoring over eight years, when at least two samplings per year were conducted. Samples were collected mostly from fouling communities predominantly comprised of hydroids and macroalgae, attached to floating pontoons, ropes, buoys, and ship hulls. At each locality, individuals were removed by hand and immediately preserved in 96–100% ethanol. In the laboratory, using a stereomicroscope, male individuals (see Guerra-García 2006) were identified as *P. pusilla* (see Mayer 1903: pl. 2, figs 36, 37; Ros et al. 2013c: fig. 2).

To compare the levels of intra- and interspecific genetic diversity, four individuals of the congeneric *Paracaprella tenuis* Mayer, 1903 from Celestún, Mexico (Table 1)

Table 1. *Paracaprrella pusilla* sampling information. Sampling localities, location codes, source countries, geographical coordinates, substrata, and year of collection. Data for Cadiz Marina (ESCAD) correspond to the sample used in the spatial analysis.

Locality	Location Code	Country	Coordinates	Habitat	Sampling
<i>Paracaprrella pusilla</i>					
Cadiz Marina (Puerto América, Cádiz)	ESCAD	Spain	36°32'29"N, 6°17'61"W	Marina – <i>Eudendrium</i> spp.	2010–2017
Puente de Hierro Marina (San Fernando, Cádiz)	ESSFN	Spain	36°29'02"N, 6°10'44"W	Marina – <i>Eudendrium</i> sp.	2016
Palma Marina (Balears)	ESBAL	Spain	39°33'54"N, 2°37'58"E	Marina – <i>Halocordyle</i> sp.	2011–2012
Gulf of Gabès (Kneiss Channel)	TNGGB	Tunisia	34°20'46"N, 10°14'44"E	Fine sand	2016
Zikim Beach	ILZIK	Israel	31°36'45"N, 34°30'16"E	Drifting <i>Bugula neritina</i>	2014
Trinity Inlet Cairns (Queensland)	AUAUS	Australia	16°57'56"S, 145°47'34"E	Raft	2013
Ilha Cotinga (Paraná)	BRILH	Brazil	25°31'36"S, 48°28'22"W	Submerged artificial substrata	2012
Paranaguá Bay (Paraná)	BRPAB	Brazil	25°30'03"S, 48°31'47"W	Experimental plates	2009
Paranaguá Marina (Paraná)	BRPAR	Brazil	25°30'53"S, 48°29'52"W	Marina – <i>Eudendrium</i> sp.	2012
Niteroi (Rio de Janeiro)	BRRIO	Brazil	22°55'42"S, 43°06'36"W	Marina – Hydroids spp.	2012
São Sebastião (São Paulo)	BRSAO	Brazil	23°46'06"S, 45°24'06"W	Marina – <i>Eudendrium</i> sp.	2012
Sisal	MXSIS	Mexico	21°40'44"N, 90°03'26"W	Drifting seaweeds on sediment	2010
<i>Paracaprrella tenuis</i>					
Celestún	MXCEL	Mexico	20°51'32"N, 90°24'08"W	Drifting seaweeds on sediment	2010
OUTGROUPS					
<i>Caprella liparotensis</i>					
Benalmádena (Málaga)	ESBENA	Spain	36°34'51"N, 04°33'30"W	Intertidal macroalgae	2014
<i>Caprella danilevskii</i>					
Al-Hoceima	MAAHO	Morocco	35°15'04"N, 03°55'09"E	Intertidal macroalgae	2013

were also included. *Paracaprrella tenuis* is very similar to *P. pusilla* (see morphological characters by McCain 1968; Winfield and Ortiz 2013: table 1) and these species occur in sympatry in the northern Gulf of Mexico (Foster et al. 2004).

Temporal sampling. *Paracaprrella pusilla* was first recorded in Europe in September 2010 on a floating pontoon at Cadiz marina, southern Spain, during a survey of peracarid crustaceans from harbours along the Strait of Gibraltar (Ros and Guerra-García 2012). At this locality, *P. pusilla* is associated with *Eudendrium* sp., a hydroid and a common component of fouling communities; these species seem to have a mutualistic

relationship (Ros and Guerra-García 2012; Ros et al. 2013a). Samples of the Cadiz population were collected annually from 2010 to 2017 (Table 1), mostly during summer or early autumn, when caprellid abundance was generally greatest. Individuals of *P. pusilla* were removed by hand from samples of *Eudendrium* collected from the sides of floating pontoons, near the water surface. Seventy-five specimens were collected from this site and immediately preserved in 96–100% ethanol.

DNA extraction, amplification, and sequencing

Genomic DNA was extracted from gnathopods, pereopods, antennae and gills along one side of the body of each specimen sampled. We used the commercial kit PureLink Genomic DNA Mini Kit (Invitrogen, UK) according to the manufacturer's protocol. The DNA was eluted in 120 µl of elution buffer and stored at –20 °C.

Fragments of two mitochondrial (COI and 16S rRNA) and two nuclear (28S rRNA and ITS) genes were amplified by polymerase chain reaction (PCR), the latter two genes only for a subset of representative individuals of each population. PCR amplifications consisted of 25 µl reaction volumes containing 3 µl of template DNA, 10× MgCl₂-free buffer (Invitrogen, UK), 3 mM (for COI gene)/2.5 mM (for 16S, 28S and ITS genes) MgCl₂, 0.2 mM dNTPs, 1 µM of each primer, 0.1 µg µl⁻¹ Bovine Serum Albumin (BSA, Promega, Madison, WI), 0.3 U Platinum Taq DNA polymerase (Invitrogen, UK), and double-distilled H₂O to volume. Primers for amplification and PCR conditions are listed in Table 2.

PCR product purification and unidirectional or bidirectional Sanger sequencing were provided by a commercial company (GENEWIZ, London, UK).

Table 2. Primers used for amplification and PCR conditions used in the present study.

Primer	Sequence (5'-3')	Source	PCR conditions
COI			
igLCO1490	TITCIACIAAYCAYAARGAYATTGG	Geller et al. (2013)	94 °C (4'); [x40] 94 °C (45"), 45 °C (50"), 72 °C (1'); 72 °C (10')
igHCO2198	TAIACYTCIGGRTGICCCRAARAAYCA		
LCO1490	GGTCAACAAATCATAAAGATATTGG	Folmer et al. (1994)	
HCO1490	TAAACTTCAGGGTGACCAAAAATCA		
16S rRNA			
16STf	GGTAWHYTRACYGTGCTAAG	Macdonald et al. (2005)	94 °C (2.30'); [x36] 94 °C (40"), 54 °C (40"), 65 °C (1.20'); 65 °C (8')
16Sbr	CCGGTTTGAACCTCAGATCATGT	Palumbi et al. (1991)	
28S rRNA			
28S rd1a	CCCSCGTAAYTTAGGCATAT	Edgecombe and Giribet (2006)	94 °C (4'); [x40] 94 °C (20"), 58 °C (1'), 72 °C (2'); 72 °C (10')
28Sb	TCGGAAGGAACCGCTAC	Whiting (2002)	
28SDKF	GATCGGACGAGATTACCCGCTGAA	Strong et al. (2011)	
LSU1600R	AGCGCCATCCATTTTCAGG	Williams et al. (2003)	
ITS			
ITS1F	CACACCGCCCGTCGCTACTACCGAT	Chu et al. (2001)	94 °C (1.30'); [x33] 94 °C (20"), 56.8 °C (30"), 72 °C (30"); 72 °C (5')
ITS1R	GCGGCAATGTGCATTCGACATGTGA		

Sequence analysis

The resulting sequences were checked and edited using SEQUENCHER version 5.4.6 (Gene Codes Corporation, Ann Arbor, MI, USA). Mitochondrial COI sequences were translated into amino acids to search for stop codons that are indicative of the presence of pseudogenes. All sequences were thereafter deposited in GenBank (Suppl. material 1, Table S1).

For mitochondrial (COI and 16S) and ITS genes, all sequences were aligned using MUSCLE (Edgar 2004) as implemented in MEGA version 7 (Kumar et al. 2016). Sequences of both mitochondrial genes were subsequently concatenated using the APE package (Paradis et al. 2004) in RStudio (RStudio Team 2016). For 28S gene, sequences were aligned using the MAFFT algorithm (Katoh and Standley 2013) and highly variable regions were eliminated from the analyses using GBLOCKS (Castresana 2000) with default parameters and allowing all gap positions. Uncorrected pairwise distances among haplotypes were calculated using MEGA version 7 (Kumar et al. 2016).

Spatial analysis

Phylogenetic reconstruction. Phylogenetic relationships were estimated using two model-based methods of phylogenetic inference to verify whether alternative topologies were supported by different tree-building approaches: Bayesian inference (BI) in MrBayes version 3.2.6 (Ronquist et al. 2012) and maximum likelihood (ML) in RAxML version 7.2.8 (Stamatakis 2008). These analyses were carried out for three sequence datasets: one using the concatenated sequences of the mitochondrial genes (COI + 16S), other using sequences of the nuclear 28S ribosomal gene, and the last using sequences of the nuclear ITS gene. Analyses were conducted using data partitions by codon (1+2+3) for the mitochondrial COI gene, to minimize saturation effects of codon positions on phylogenetic reconstructions (Salemi 2009) and to account for different rates of evolution of each one (Pond et al. 2009). Only one individual (or sequence) per haplotype was included in the phylogenetic analyses. *Caprella liparotensis* Haller, 1879 and *Caprella danilevskii* Czerniavski, 1868 were used as outgroups (Table 1). The best-fit model of sequence evolution for the three datasets was estimated using PartitionFinder version 2.1.1 (Lanfear et al. 2016). According to the corrected Akaike Information Criterion (AICc) (Akaike 1974), the best models for the mitochondrial concatenated dataset were GTR+I (1st partition), GTR (2nd partition), GTR+G (3rd partition), and GTR+G (4th partition = 16S), and for the 28S and the ITS genes, the models GTR+I and GTR+G were selected, respectively. For BI analyses, two independent runs, of four chains each, were conducted for 2×10^7 generations (runs converged with average standard deviation of the split frequencies below 0.01). Trees and parameters were sampled every 1000 generations, with the heating parameter set to 0.25. The consensus (majority-rule) tree was estimated combining results from duplicated analyses, after discarding 25% of total samples as burn-in, determined from plotting log-likelihood values against generation time in Tracer version 1.7.1 (Rambaut et

al. 2018). For ML analyses, phylogenetic tree was calculated using the GTRGAMMAI model for the mitochondrial dataset, GTRCATI for the 28S gene, and GTRGAMMA for the ITS gene, and bootstrap supports were calculated using 1000 replicates. Consensus tree inferred for each molecular dataset was visualized and rooted using FigTree version 1.4.3 (Rambaut 2017).

Furthermore, relationships among mitochondrial haplotypes (using the concatenated dataset) were examined via a haplotype network using statistical parsimony method (Templeton et al. 1992) in TCS version 1.21 (Clement et al. 2000) with a 95% connection limit. The network was plotted with tcsBU (Santos et al. 2016).

Estimates of genetic diversity and population structure. Two measures of mtDNA diversity, haplotype (H_d , Nei 1987) and nucleotide diversity (π , Nei 1987), were estimated for each *P. pusilla* locality and region, using DnaSP version 6 (Rozas et al. 2017). Three distinct regions were considered: Northeast Atlantic + Mediterranean, South Pacific, and Western Atlantic (presumed native region). The single individual from Israel (ILZIK) was excluded from the analysis.

The genetic differentiation among populations was determined by means of the statistics F_{ST} (Weir and Cockerham 1984) with Arlequin version 3.5.1.2 (Excoffier and Lischer 2010), using the pairwise differences distance method. Pairwise F_{ST} values were calculated for the mitochondrial dataset, excluding the population with less than three individuals (i.e. ILZIK). Statistical significance was assessed through 10000 permutations, and a multidimensional scaling (MDS) analysis was performed on the matrix of F_{ST} values for a graphical depiction of the structure using TIBCO STATISTICA version 13 (TIBCO Software Inc., CA, USA). Additionally, a hierarchical analysis of molecular variance (AMOVA, Excoffier et al. 1992) was conducted in Arlequin version 3.5.1.2 (Excoffier and Lischer 2010) to study the distribution of genetic variability between presumed native and introduced *P. pusilla* populations and to explore differentiation across geographic locations. In this regard, two groups were used for the AMOVA tests: (i) presumed native (Brazil + Mexico) vs non-native (Spain + Tunisia + Australia), and (ii) regions (Northeast Atlantic + Mediterranean; South Pacific; Western Atlantic). Statistical significance of variance components was tested with 16000 permutations.

Finally, to test if the selection of demographic events (population expansion or contraction) affected the genetic structure of non-native and potentially native populations, neutrality tests (Tajima's D , Fu's F_S and Ramos-Onsins and Rozas' R_2) (Fu 1997; Tajima 1989; Rozas and Ramos-Onsins 2002) and mismatch distribution were performed for the mitochondrial dataset. Neutrality tests provide trends with respect to equilibrium and non-equilibrium conditions and indicate recent population expansion when the null hypothesis of neutrality is rejected due to significant negative values. They were assessed for each region with the statistical significance obtained by 10000 coalescent simulations. The distribution of frequencies of observed numbers of differences between pairs of haplotypes for each region is shown in the mismatch distribution. It uses tree shape to provide a rough estimate of population expansion or contraction because of a bottleneck. Populations that have experienced rapid demo-

graphic growth in the recent past exhibit unimodal distributions, whereas populations that have been constant over time (demographic equilibrium) have bimodal or multimodal distributions (Rogers and Harpending 1992; Haydar et al. 2011). To test the goodness-of-fit between the observed and the expected distributions under the sudden expansion model, the sum of squared deviations (SSD) (Schneider and Excoffier 1999) and Harpending's raggedness index (Rg) (Harpending 1994) were also computed using 10000 bootstrap replicates. DnaSP version 6 (Rozas et al. 2017) was used to calculate R_2 statistic, and the remaining estimates and respective significance tests were obtained with Arlequin version 3.5.1.2 (Excoffier and Lischer 2010). In all analyses, localities with fewer than three individuals (i.e. ILZIK) were excluded.

Temporal monitoring

In the Cadiz marina (ESCAD) population, genetic diversity over time was assessed by estimating the haplotype (Hd) and nucleotide (π) diversity (Nei 1987) for each year sampled using DnaSP version 6 (Rozas et al. 2017). Frequencies of haplotypes per year were also calculated with this program. In addition, to test whether variation in genetic diversity (haplotype diversity) was linearly related to time (in years), a linear regression analysis was performed using the ggplot2 package (Wickham 2016) in RStudio (RStudio Team 2016).

Estimates of population differentiation over time were obtained from pairwise F_{ST} calculations for the mitochondrial dataset, and neutrality tests (Tajima's D , Fu's FS and Ramos-Onsis and Rozas' R_2) were also estimated. All these analyses were conducted as described for the spatial analysis. The MDS analysis based on the matrix of F_{ST} values was performed together with the data from the spatial analysis.

Results

Sequence variation

The mitochondrial markers COI and 16S rRNA were successfully amplified for 236 caprellid individuals: 230 *Paracaprella pusilla*, four *P. tenuis*, and the outgroups *Caprella liparotensis* and *C. danilevskii* (Suppl. material 1, Table S1). Overall, 44 haplotypes were observed: 39 for *P. pusilla*, three for *P. tenuis*, and one for each of the outgroup species (Table 3). The complete alignment of the COI dataset had a total length of 612 bp. No insertions or deletions were detected in any of the sequences, and when they were translated into proteins, no stop codons were found. However, for the 16SrRNA (alignment of 408 bp), some indels were identified. Most of these correspond to insertions or deletions in sequences for *P. tenuis* or *Caprella* spp. Interestingly, among *P. pusilla*, a one bp insertion of a thymine (T) was observed at position 45 in six individuals from Australia and Brazil (all corresponding to the haplotype H25). The alignment of the concatenated dataset of these two genes (COI + 16S) had a total of 1022 bp.

Table 3. Genetic diversity of *Paracaprilla pusilla* for each sampling site and region. Number of individuals per location (N), number of haplotypes (H), haplotype codes (private haplotypes indicated in **bold**), haplotype diversity (*Hd*) and nucleotide diversity (π).

Region	Population	N	H	Haplotype codes	<i>Hd</i>	π
Northeast	ESCAD	75	9	H1, H2, H3, H4, H5 , H6, H7, H8 , H9	0.764	0.00598
Atlantic + Mediterranean	ESSFN	25	8	H1, H2, H3, H4, H7, H9, H10 , H11	0.713	0.00366
	ESBAL	53	10	H2, H6, H12 , H13 , H14 , H15 , H16 , H17 , H18 , H19	0.777	0.00240
	TNGGB	3	2	H20, H21	0.667	0.00066
	ILZIK	1	1	H2	–	–
	Total	157	21		0.849	0.00460
South Pacific	AUAUS	15	6	H2, H19, H22, H23 , H24 , H25	0.790	0.00220
	Total	15	6		0.790	0.00220
Western Atlantic (presumed native)	BRILH	10	5	H2, H25, H26 , H27, H28	0.756	0.00305
	BRPAB	11	5	H22, H25, H29 , H30 , H31	0.782	0.00456
	BRPAR	7	4	H2, H20, H28, H32	0.810	0.00104
	BRRIO	6	4	H2, H27, H33 , H34	0.800	0.00125
	BRSOA	9	4	H2, H25, H35 , H36	0.778	0.00269
	MXSIS	15	4	H2, H37 , H38 , H39	0.600	0.00151
	Total	58	18		0.877	0.00310
TOTAL	230	39		0.879	0.00418	

The nuclear marker 28S was amplified for 60 *P. pusilla* individuals and the two outgroups species (Suppl. material 1, Table S1). Unfortunately, we were not able to amplify this gene for any individuals of *P. tenuis*. The total alignment length was 1265 bp, but only 1135 bp were selected using the software GBLOCKS. Some insertions and deletions were found, most of them distinguishing between *P. pusilla* and the outgroup species. Among *P. pusilla* sequences, a lack of sequence variation was observed: only two haplotypes, differing by the presence of an indel at position 443–444 of the alignment, were retrieved for the 60 individuals sequenced.

Finally, the alignment of the nuclear ITS marker had a total of 518 bp and included 73 *P. pusilla* and four *P. tenuis* individuals, plus the two outgroup species (Suppl. material 1, Table S1). Some indels were found between *P. pusilla* and the other species. However, all *P. pusilla* sequences were identical.

Spatial analysis

Phylogenetic reconstruction. Phylogenetic analyses of the mitochondrial dataset using the two different approaches (ML and BI) rendered trees with similar overall topologies, with main clades receiving high bootstrap or posterior probabilities support (Suppl. material 2, Fig. S1). All analyses revealed that *P. pusilla* and *P. tenuis* are monophyletic and formed highly supported clades. Within *P. pusilla*, no clear genetic structure was apparent and all haplotypes from the presumed native and non-native ranges appeared mixed, matching the results from the haplotype network (see below).

Nevertheless, haplotypes 6 and 7 appeared a little more differentiated from the remaining haplotypes. Pairwise divergence (uncorrected p distances) between most *P. pusilla* haplotypes was small, not exceeding 1.1%, with the exception of H6 and H7, which differed from other haplotypes by 2.0–2.4% (Suppl. material 3, Table S2). Interspecific divergence within the genus *Paracaprella* were much larger than intraspecific variation, ranging from 16.6 to 17.9%, which is similar to the values found between the two *Caprella* species included in this study (21.5%) (Suppl. material 3, Table S2). For the 28S gene, the ML and BI analysis produced a tree with identical topologies. *Paracaprella pusilla* was found to be monophyletic in both analyses (Suppl. material 5, Fig. S2A). Sequence divergence between them was 0%, whereas divergence between *Caprella* species was 4.5%. Divergence between the two genera exceeded 25%. Finally, for the ITS, the ML and BI analyses also rendered trees with identical topologies (Suppl. material 5, Fig. S2B). For this gene, sequence divergence between *P. pusilla* and *P. tenuis* was 16.9%, a higher value than that found between *Caprella* species (10.7%).

The haplotype network reconstruction for all sequenced mtDNA data retrieved two separate networks that could not be connected using the 95% parsimony connection limit (Fig. 1). For the first network, a star-like phylogeny was observed, with one very common haplotype surrounded by several low-frequency and some medium-frequency haplotypes with a maximum distance of eight mutation steps (corresponding to the haplotype H25). Interestingly, this most different haplotype corresponds to those individuals from Australia and Brazil that presented a one bp insertion at position 45 of the alignment. The central haplotype (H2) accounts for ~30% of *P. pusilla* individuals sequenced and was detected at all locations except the Gulf of Gabès, Tunisia (TNGGB; only three individuals sequenced) and Paranaguá Bay (BRPAB) (Table 3). The remaining haplotypes found in Europe were within one to four point mutation steps from the central haplotype, those from Australia differed by one to eight steps (Fig. 1). The second network included only two haplotypes (H6 and H7) separated by seven mutation steps; these were detected in 10 individuals of Cadiz (ESCAD and ESSFN) and Balears (ESBAL) populations (Fig. 1).

Genetic diversity and population structure. The spatial distribution of the 39 mitochondrial haplotypes of *P. pusilla* did not show any clear pattern (Table 3; Fig. 2). Private haplotypes were present in almost all populations. Eighteen haplotypes were identified in the presumed native range at the Atlantic coast of America, twelve of them were private (Table 3; Fig. 2). Among populations from other regions that are considered non-native (Europe and Australia), 25 haplotypes (14 private) were identified and only four of them (H2, H20, H22, and H25) were shared with the presumed native locations. Only H2 was shared between European non-native populations and the presumed native ones. Eight haplotypes (H1–H4, H6, H7, H9, and H19) were shared among non-native populations, most of them between ESCAD and ESSFN (i.e. Cadiz populations). Among these haplotypes, only one (H2) was present in almost all non-native populations (except TNGGB), but also in all presumed native locations except BRPAB (Table 3; Fig. 2).

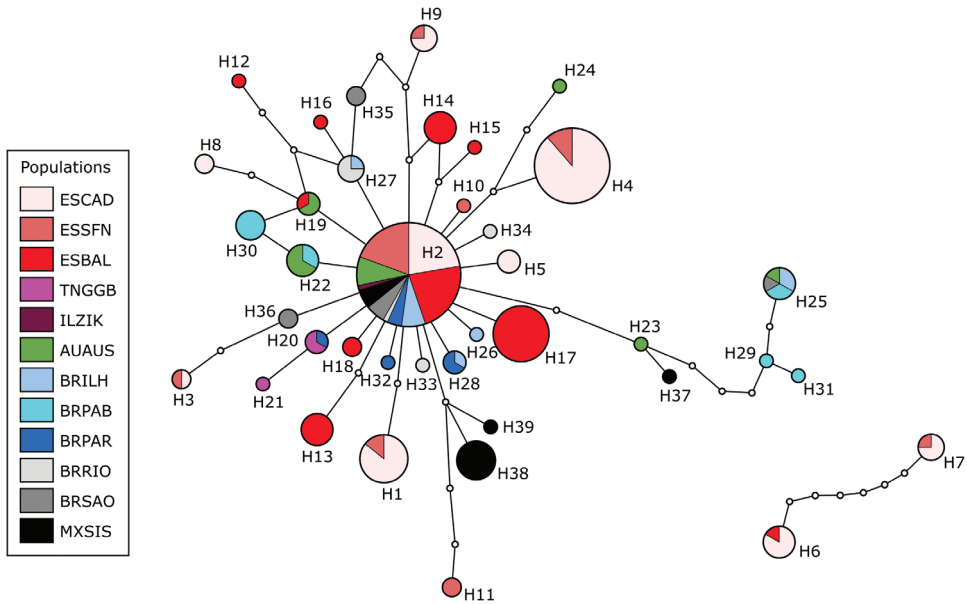


Figure 1. Mitochondrial (COI+16S) haplotype network of *Paracaprella pusilla* from its presumed native and non-native range. Haplotypes 6 and 7, corresponding with 10 individuals of Cadiz (ESCAD and ESSFN) and Baleares (ESBAL) populations, were grouped in an independent network. This network could not be connected using the 95% parsimony connection limit to the main haplotype network which includes most of the haplotypes found in *P. pusilla*. Haplotype circles are proportional to haplotype frequency and numbers represent haplotype identities (Table 3). Non-observed haplotypes (extinct or unsampled haplotypes) are represented by small white circles. Each line connecting haplotypes represents a single mutational step.

Overall, haplotype ($Hd = 0.879$) and nucleotide ($\pi = 0.00418$) diversities were high (Table 3). Both presumed native and non-native populations showed similar values of haplotype diversity (Table 3). Highest haplotype diversities were found for the presumed native populations of Paranaguá marina (BRPAR) and Niteroi (BRRIO), and the supposedly non-native population of Australia (AUAUS) ($Hd = 0.810$, 0.800 and 0.790 , respectively). The lowest haplotype diversity was found for the presumed native population of Mexico (MXSIS) ($Hd = 0.600$; Table 3). Among Eastern Atlantic and Mediterranean populations, Palma marina (ESBAL) displayed the highest value of haplotype diversity ($Hd = 0.879$) and TNGGB the lowest ($Hd = 0.667$; Table 3). Nucleotide diversity ranged from 0.00066 in TNGGB to 0.00598 in ESCAD.

The estimates of pairwise F_{ST} values showed mostly low and intermediate levels of divergence between populations, with significant values ranging from 0.067 (ESCAD-AUAUS) to 0.538 (TNGGB-MXSIS) (Table 4). Despite the great geographic distances, F_{ST} values between presumed native and non-native populations were not high. However, they revealed that the Gulf of Gabès (TNGGB), Paranaguá Bay (BRPAB), and Sisal (MXSIS) were genetically differentiated from most other populations (Table

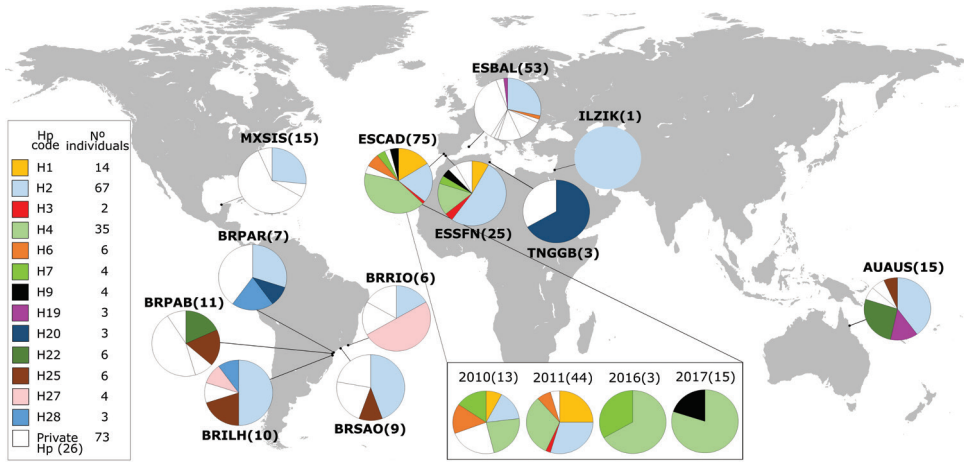


Figure 2. Geographical distribution of the 39 mtDNA haplotypes (Hp) of *Paracaprella pusilla* in the populations sampled. Each site is represented by a pie chart showing population composition and relative haplotype frequency. Number of analysed individuals per population appears in brackets. White-shaded areas are the cumulative proportion of private haplotypes per location. Sites are coded as in Tables 1 and 2. The legend gives information about the existing haplotypes across all locations and the number of individuals carrying each haplotype. For the Cadiz marina (ESCAD) population, the change in haplotype frequency is shown in the four years when the species was recorded.

Table 4. Pairwise F_{ST} values between populations of *Paracaprella pusilla*, based on mtDNA COI+16S sequences. Significant values ($p < 0.05$) are indicated with an asterisk.

	ESCAD	ESSFN	ESBAL	TNGGB	AUAUS	BRILH	BRPAB	BRPAR	BRRIO	BRSAO
ESCAD										
ESSFN	0.019									
ESBAL	0.125*	0.072*								
TNGGB	0.105	0.142	0.275							
AUAUS	0.067*	0.021	0.088*	0.282*						
BRILH	0.078	0.044	0.122*	0.219*	0.006					
BRPAB	0.192*	0.228*	0.335*	0.286*	0.122	0.088				
BRPAR	0.049	-0.009	0.058	0.431*	0.394	0.044	0.255*			
BRRIO	0.058	0.026	0.095	0.511*	0.099	0.070	0.260*	0.179*		
BRSAO	0.059	0.012	0.089*	0.244*	0.013	-0.046	0.156	0.044	0.005	
MXSIS	0.187*	0.195*	0.293*	0.538*	0.297*	0.290*	0.401*	0.367*	0.397*	0.296*

4), although in the case of the Gulf of Gabès population this might be an effect of a low sample size ($N = 3$). These patterns are reflected in the MDS plot, which did not show any clear separation between non-native and presumed native populations, but TNGGB, BRPAB and MXSIS were slightly separated from the others (Fig. 3). Hierarchical AMOVA tests revealed significant genetic differences within populations, and among populations within groups at all geographical levels (native vs non-native, and

Table 5. AMOVA tests. Results of the AMOVA tests comparing variation in mitochondrial sequences of *Paracaprella pusilla* grouped at two geographical levels: (A) presumed native vs non-native, and (B) regions. Significance at $p < 0.05$ (*) and at $p < 0.0001$ (**). Statistical probabilities derived from 16000 permutations.

Group	Source of variation	d.f.	Sum of squares	Variance components	Percentage of variation
A Presumed native vs non-native	Between groups	1	13.062	0.067	3.02 ($F_{CT} = 0.030$)
	Among populations w/in groups	9	57.520	0.245	11.01 ($F_{SC} = 0.114^*$)
	Within populations	218	417.707	1.916	85.97 ($F_{ST} = 0.140^{**}$)
	Total	228	488.288	2.229	
B Regions	Among groups	2	17.036	0.024	-5.30 ($F_{CT} = 0.011$)
	Among populations w/in groups	8	53.546	0.263	23.84 ($F_{SC} = 0.121^*$)
	Within populations	218	417.707	1.916	81.46 ($F_{ST} = 0.130^{**}$)
	Total	228	488.288	2.203	

regions) (Table 5). Intrapopulation variance explained most (over 80%) of the genetic variation found in *P. pusilla* (Table 5).

Neutrality tests, Tajima's D , Fu's FS and Ramos-Onsís and Rozas' R_2 , were negative for all regions but not statistically significant (Table 6); note that according to Fu (1997), FS statistic should be considered as significant if its p -value is less than 0.02. Additionally, the observed mismatch distribution was nearly bimodal for all regions (Fig. 4), which, thus, disproves the sudden expansion model and suggests possible diminishing or structured population sizes. Regarding the sum of the square deviations (SSD), statistically significant differences were observed ($p < 0.05$) in presumed native populations and in the introduced Australian population (Table 6), which further support no recent population expansion. Nevertheless, these results contrast with the non-significant values of the Harpending's raggedness index (R_g) (Table 6), which indicated that a recent population expansion may have occurred in these populations. In addition, both SSD and non-significant values of R_g suggested goodness of fit between the observed and the expected distributions in East-Atlantic and Mediterranean introduced populations (Table 6; Fig. 4a), and, thus, the null hypothesis of recent population expansion should not be totally rejected.

Temporal monitoring

Paracaprella pusilla was monitored in Cadiz marina (ESCAD) soon after its first detection and for a period of eight years (2010–2017). However, the species was not found during the surveys carried out from 2012 to 2015. Therefore, we considered only four years (2010, 2011, 2016 and 2017) in our study.

Nine haplotypes (same as in the spatial study; Table 3), were obtained from the 75 individuals sequenced (Suppl. material 4, Table S3; Fig. 2). Interestingly, haplotype

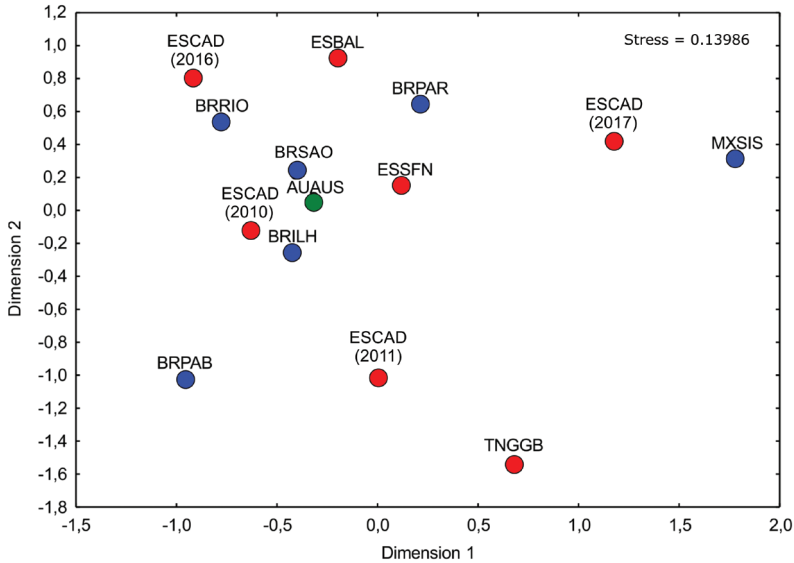


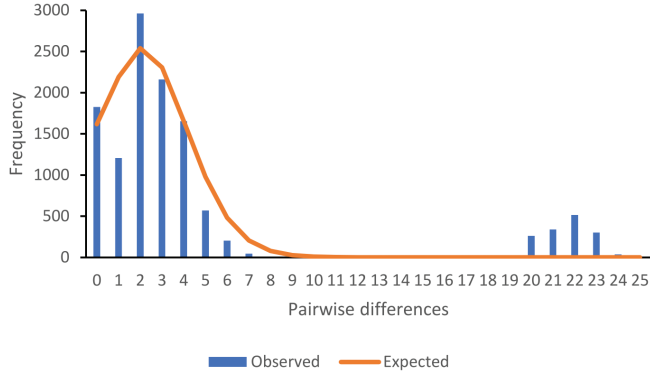
Figure 3. Multidimensional scaling plot (MDS) based on F_{ST} values for *Paracaprrella pusilla*. For Cadiz marina (ESCAD) population, four points are represented, each one corresponding to one of the four years when the species was recorded. Populations are coloured according to the region they belong: Northeast Atlantic + Mediterranean (red); South Pacific (green); and presumed native region (blue).

Table 6. Neutrality tests and mismatch distribution analysis for mitochondrial sequences of *Paracaprrella pusilla* for each region. Negative and significant values for Tajima’s D, Fu’s FS and Ramos-Onsis and Rozas’ R_2 tests indicate population expansion; SSD = sum of squared deviations between observed and expected distributions; Rg = Harpending’s raggedness index; * $p < 0.05$, ** $p < 0.02$.

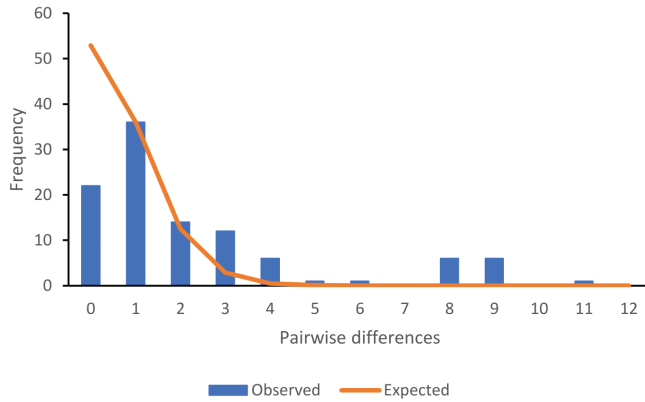
	Northeast Atlantic + Mediterranean	South Pacific	Western Atlantic (presumed native)
Tajima’s D	-1.414	-1.543	-1.166
Fu’s FS	-1.704	-0.379	-5.661*
R_2	0.047	0.127	0.064
SSD	0.014	0.111*	0.107**
Rg	0.040	0.074	0.034

H4 was the only one present in all monitoring years, and it was the most frequent haplotype found (Suppl. material 4, Table S3). It was only detected in three individuals in 2010, but its frequency increased over time (Suppl. material 4, Table S3; Fig. 2). The remaining haplotypes were only detected in one or two specific years. For instance, haplotypes H1, H2, and H6 (the second the most common haplotype in the spatial study; Table 3; Fig. 2), were found in 2010 and their frequency increased in 2011, but they disappeared afterwards. Haplotype H7 was also present in 2010, not detected the next year, but detected again in 2016 and disappearing again in 2017. Finally, haplotypes H3, H5, H8 and H9 were only detected in one of the years. Overall, the

a) Northeast Atlantic + Mediterranean



b) South Pacific



c) Presumed native region (Western Atlantic)

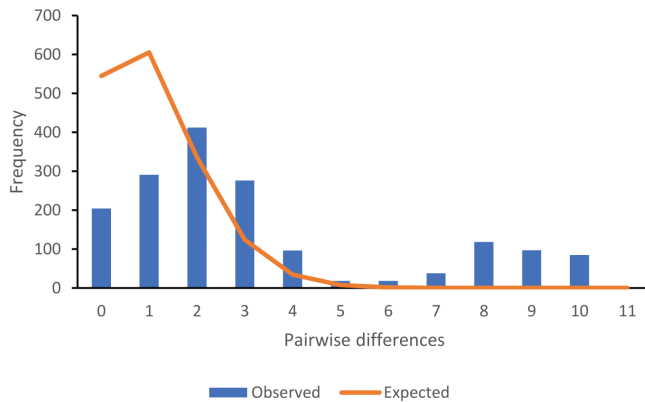


Figure 4. Mismatch distribution of *Paracaprella pusilla* for each region. a) Europe (Northeast Atlantic + Mediterranean), b) Australia (South Pacific), and c) presumed native region. Blue bars show the observed frequency distributions and the orange lines represent the expected ones under the sudden expansion model.

Table 7. Neutrality tests for mitochondrial sequences of Cadiz marina (ESCAD) population over time. Negative and significant values for Tajima's D, Fu's FS and Ramos-Onsis and Rozas' R_2 tests indicate population expansion; * $p < 0.05$; ** $p < 0.02$.

	2010	2011	2016	2017
Tajima's D	0.907	-1.020	0	0.387
Fu's FS	4.096	4.970	4.946	4.221
R_2	0.190	0.079	0.472	0.171

diversities of haplotype ($Hd = 0.764$) and nucleotide ($\pi = 0.00598$) were high (Suppl. material 4, Table S3). Haplotype diversity showed a linear pattern of decrease over time (Suppl. material 4, Table S3), with maximal values occurring after the species' initial discovery at Cadiz marina in 2010 ($Hd = 0.885$), and lowest values occurred in the last monitoring year ($Hd = 0.343$). Nucleotide diversity ranged from 0.00169 in 2017 to 0.01515 in 2016 (Suppl. material 4, Table S3).

The F_{ST} statistics showed intermediate levels of divergence between years, with significant values ranging from 0.131 (2010–2011) to 0.261 (2010–2017). Significant differentiation was found between years 2010, 2011 and 2017. Only the year 2016 did not show genetic differences from the other years during the monitoring period, but this could be an artefact due to the low sample size ($N = 3$). In the MDS plot, the year 2017 appeared more separated from the remaining monitoring years carried out in the Cadiz marina population (Fig. 3).

Finally, Tajima's D, Fu's FS and Ramos-Onsis and Rozas' R_2 were negative and not significant for all years (Table 7), which indicated that the Cadiz marina population was not under an expansion phase.

Discussion

Conspecificity of *Paracaprella pusilla* populations

Unlike other caprellid taxa with a wide distribution, such as *Caprella penantis* (Cabezas et al. 2013a) or *C. andreae* (Cabezas et al. 2013b), the absence of population genetic structure (Fig. 1; Suppl. material 2, Fig. S1), the small variation of studied mitochondrial markers, and no differentiation (except one indel in the 28S gene) in nuclear markers reveal that the populations of *Paracaprella pusilla* that we studied did not harbour any cryptic species. Moreover, our analyses confirm that *P. pusilla* and the morphologically close *P. tenuis* are monophyletic and formed highly supported clades (Suppl. material 2, Fig. S1; Suppl. material 5, Fig. S2B). Therefore, our findings support the assumption that anthropogenic dispersal is responsible for the broad geographic distribution of *P. pusilla* and confirms that this is a neocosmopolitan species (see Darling and Carlton 2018).

Native range of *Paracaprella pusilla*

The Atlantic coast of Central and South America has been postulated as the most likely native range for *P. pusilla* (Mayer 1903; McCain 1968; Carlton and Eldredge 2009; Rocha et al. 2013) (Fig. 5a). In our study, the six populations sequenced for this region and including the type locality (Rio de Janeiro) accounted for a higher percentage of private haplotypes (66.7%) than that found for all non-native populations sequenced (56.0%). This could be considered an indicator of long-term residency far exceeding the time-frame of human introductions (Wares 2002). However, the non-significant values of the Harpending's raggedness index (R_g) found for the native region, that may also imply a recent expansion of *P. pusilla* to this region, or the high genetic diversity found in some introduced areas, show the complexity to determine with accuracy the native region of the species through isolated approaches. For example, in an increasingly interconnected world, where maritime traffic continuously connects very distant areas, it is difficult to keep the native region isolated. Secondary introductions from populations introduced in remote areas, and, even more importantly, among sites within the native range, occur, which increase the connectivity and possibly also diversity within particular populations. This is particularly true in fouling species, such as *P. pusilla*, which can be found in both natural and artificial habitats in the native region.

There are, however, several aspects that point to the Atlantic coast of Central and South America as the most likely native area for *P. pusilla*. First, most records of *P. pusilla*, both recent and old, come from this area (Ros and Guerra-García 2012). Second, while most records of *P. pusilla* from putative introduced areas are located in artificial habitats (such as those from India, Europe, Australia, Hawaii, and Pacific Mexico and Panama), in the putative native region *P. pusilla* is also common in natural habitats (Ros et al. 2016b). Third, the biogeographic distribution of species of *Paracaprella* (Fig. 5b) reveals that the Atlantic coast of Central and South America has a high diversity of recorded species, which infers that the centre of diversity for this genus may lie in this area. The other area with a high diversity of recorded *Paracaprella* species is a small region of the Pacific coast of Central America. However, all records of *P. pusilla* from this region are recent and, unlike other records of *Paracaprella* species, are located in artificial habitats (Alarcón-Ortega et al. 2015). For all these reasons, we believe that the Atlantic coast of Central and South America is the most likely native range for *P. pusilla*.

Introduction pattern in temperate European waters

Genetic studies have shown that introduced populations are generally much less diverse than the native ones because of the founder effects and post-introduction demographic bottlenecks (Holland 2000; Rius et al. 2015; Viard et al. 2016). However,

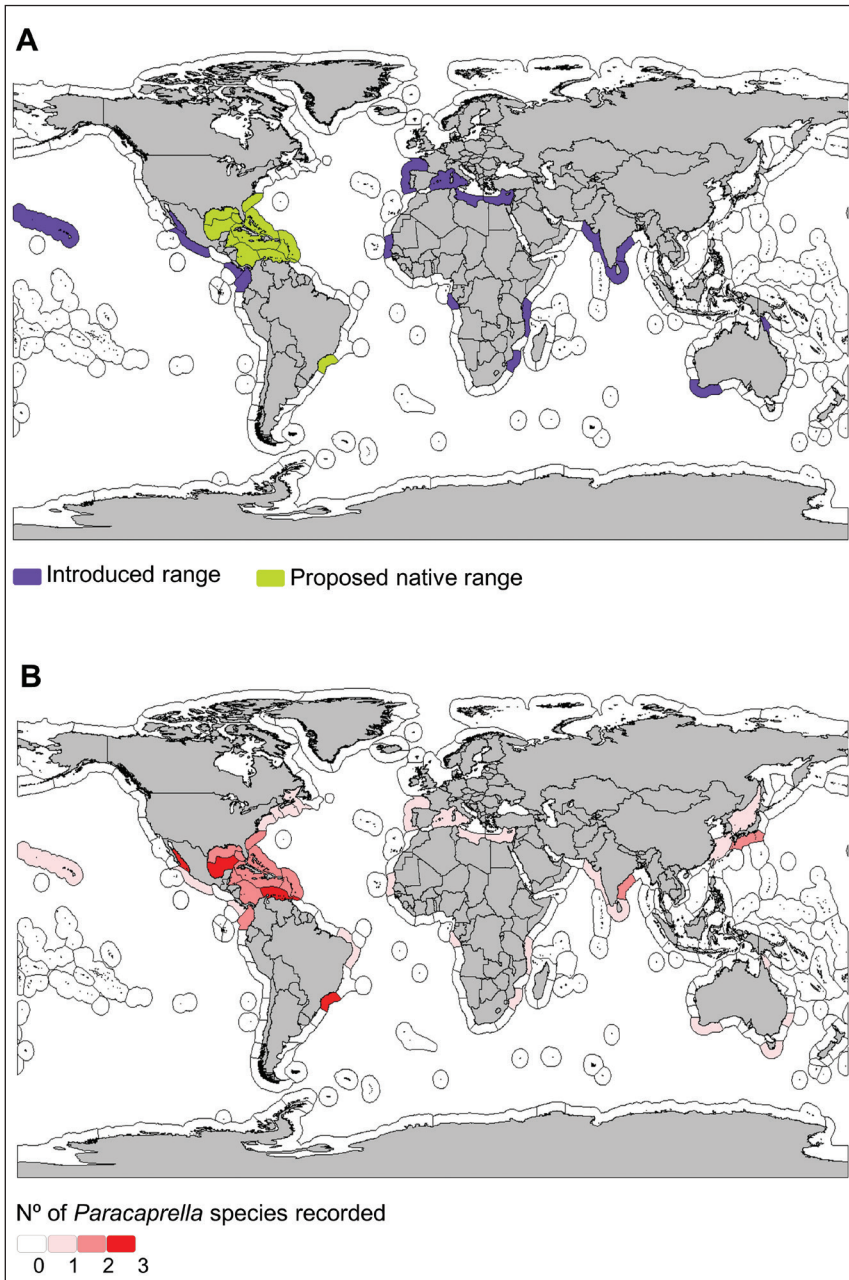


Figure 5. Global distribution of *Paracaprella pusilla* and the genus *Paracaprella* **a** Current worldwide distribution of *P. pusilla* including its introduced range and the proposed native range. Information based on Ros and Guerra-García (2012) and references therein; Ros et al. (2013c); Ros et al. (2014); Ros et al. (2016a); Alarcón-Ortega et al. (2015); Alfaro-Montoya and Ramírez-Alvarado (2018); and Fersi et al. (2018) **b** Number of *Paracaprella* species recorded per marine ecoregions. Information based on Winfield and Ortiz (2013); Mauro and Serejo (2015); Sánchez-Moyano et al. (2015); Lacerda and Masunari (2014). Marine ecoregions follow Spalding et al. (2007).

many introduced populations do not exhibit reduction in genetic diversity and may even exceed native diversity as a result of admixture or high propagule pressure from multiple introductions events (Holland 2000; Roman and Darling 2007; Rius et al. 2015; Viard et al. 2016). The existence of multiple introductions has been widely reported in the marine environment (see Rius et al. 2015), including the two invasive caprellid species which have been genetically studied in Europe (Ashton et al. 2008; Cabezas et al. 2014). In our study, the high genetic diversity found within introduced European populations, similar to that seen in the native ones, coupled with the presence of numerous private haplotypes (Table 3; Fig. 2) suggest that the introduction of *P. pusilla* in temperate European waters likely occurred from multiple introduction pathways and source populations.

Our results support the existence of one of the two main introduction pathways previously suggested by Ros and Guerra-García (2012) and Ros et al. (2013b, c), that is, through the Strait of Gibraltar, from native populations of the Atlantic coast of America. Shipping routes have existed across the Atlantic for more than 500 years (Carlton 1989). Moreover, Europe and the Mediterranean, in particular, are characterized by large clusters of ports with intermediate to high levels of trade (Drake and Lodge 2004; Seebens et al. 2013), and it is estimated that approximately 8% of vessels that travel through the Strait of Gibraltar come from the Caribbean, Gulf of Mexico and Central America (Dobler 2002; Kaluza et al. 2010; Tsiamis et al. 2018). Our mitochondrial dataset suggests that populations from Brazil could be the source of European introduced populations, because their haplotypes grouped closely (Fig. 1) and also because of the lower levels of divergence among them (Table 4; Fig. 3). Moreover, our results indicate that there could exist at least two different introduction pathways through the Strait of Gibraltar: one responsible for the introduction of *P. pusilla* in the Iberian Peninsula (ESCAD, ESSFN, ESBAL) and Israel (ILZIK), and another responsible for the introduction of this species in Tunisia (TNGGB). The presence of haplotype H2, the most common and possibly the ancestral one given its central position in the network (Fig. 1), on both the native Western Atlantic coast and on the non-native European sites (Table 3; Fig. 2), as well as the close relation between haplotypes (Fig. 1) and the low level of genetic divergence among these populations (Table 4; Fig. 3), indicate a clear link between these two regions. According to our results, any of the Brazilian populations, except for Paranaguá Bay (BRPAB), could be the source of *P. pusilla* in European waters, as all of them shared some haplotypes with these introduced populations (Table 3; Fig. 2). In addition, although only three individuals of the Gulf of Gabès (TNGGB) population were sequenced, the exclusive presence of the haplotype H20 in this population but not in the others (where a high number of individuals were sequenced), the absence of haplotype H2 and the lack of any shared haplotypes (Table 3; Fig. 2), as well as the genetic divergence found among this and the European introduced populations (Table 4; Fig. 3) indicate that an independent introduction through the Strait of Gibraltar could have happened. Haplotype H20 only occurred in the native population of Paranaguá marina (BRPAR). This particular Brazilian area might, thus, have been the source for *P. pusilla* in the Gulf of Gabès.

On the other hand, although *P. pusilla* has not been reported in the Suez Canal since Schellenberg (1928) nor in the Red Sea (Zeina and Guerra-García 2016), its recent record in the Israeli coast (Ros et al. 2016a) and the fact that it is one of the most abundant caprellid species along the coast of India (Guerra-García et al. 2010), lead us to think of the possibility of these locations as potential sources. Therefore, some individuals of *P. pusilla* could have been introduced to the Mediterranean region from the Indo-Pacific through the Suez Canal (Tsiamis et al. 2018). Future studies including samples from the Indo-Pacific region are necessary.

Paracaprella pusilla was reported for the first time in European waters in the fouling community of a marina on the Atlantic coast of southwest Spain (Ros and Guerra-García 2012) (Cadiz marina, ESCAD, in the present study), and only one year later (2011) the species was found for the first time in the western Mediterranean (ESBAL in the present study) (Ros et al. 2013c). So, according to historical records, the Cadiz marina population could represent the first step in the introduction pathways of this species in this region. However, our molecular results are not in general agreement with this hypothesis. The Palma marina (ESBAL) population had the greatest genetic diversity together with the greatest number of private haplotypes in the introduced range (Table 3; Fig. 2), which indicates that it, and not the Cadiz marina, could be the initial entry point of *P. pusilla* in European waters, and, thus, the source population for subsequent range expansion of this species in this region. Palma marina, in Balearic islands, is the largest port and an important point for commercial cargos, recreational boating, and commercial fishing; this port is one of the most important cruise destinations in the entire Mediterranean (Minchin et al. 2006) and a potential hot-spot of marine bioinvasions (Drake and Lodge 2004; Ros et al. 2013b). As far as we know, the studies of Ros et al. (2013a, c) were the only ones focused on caprellids associated with fouling communities in marinas and ports of Mallorca. So, it is possible that *P. pusilla* was present in Palma marina before its first record in the Cadiz marina. Our data show that European introduced populations are closely related. They shared haplotype H2 (Fig. 2), and the level of divergence between populations was relatively low (Table 4; Fig. 3), indicating that these populations are most likely stepping stones along the same introduction pathway, which is consistent with the scenario of transport by small vessels (Wasson et al. 2001). The stepping-stone invasion pattern is characteristic of many marine invasions and has been reported for other caprellids, such as *Caprella mutica* (Ashton 2006) and *C. scaura* (Cabezas et al. 2014). Thus, *P. pusilla* could have spread from Palma marina (ESBAL) to Cadiz marina (ESCAD), and from there to San Fernando (ESSFN), where the genetic diversity was less (Table 3). Many small vessels of Mallorca overwinter in marinas in southern Spain (Minchin et al. 2006). This, together with the high use of recreational boats on this island (Balaguer et al. 2011), represent a suitable vector for the secondary spread of *P. pusilla* from one location to another (Ros et al. 2013b, c). Unfortunately, only one individual of the eastern Mediterranean population (ILZIK) could be sequenced, which is insufficient to draw any conclusions about the source population and introduction pathway of *P. pusilla* at this locality.

Interestingly, the presence in Palma marina (ESBAL) population of one haplotype (H19) also found in Australia (AUAUS) (Table 3; Fig. 2) suggests that the same pathway or source population may have been responsible for the introduction of *P. pusilla* at these localities. Australian population did not show significant genetic differences from the native region (except with MXSIS) (Table 4; Fig. 3), and half of the haplotypes detected among sequenced Australian individuals were shared with some of the Brazilian populations (Fig. 2; Table 3). One of these haplotypes was H25, a highly distinct haplotype (Fig. 1) that has a specific insertion, which was otherwise observed only in Brazilian populations. All this indicates that the Atlantic coast of South America, namely Brazilian populations, could be the most likely origin for *P. pusilla* in Australian waters.

Temporal monitoring: loss of genetic diversity over time

Our monitoring of the Cadiz marina (ESCAD) population showed a progressive loss of genetic diversity over time (Suppl. material 4, Table S3; Fig. 2). This is consistent with a temporal instability of *P. pusilla* at this location at the westernmost limit of the geographic range of this species in Europe. This species was found in high densities, including ovigerous females, in September 2010, which somewhat refutes the presence of an initial bottleneck due to founder effects, as reported for other marine invertebrates (Pérez-Portela et al. 2012; Bayha et al. 2015). In fact, the high genetic diversity found in this population, comparable with the intrapopulation diversity observed in the presumed native range, together with the presence of private haplotypes (Table 3), indicates that a high number of colonizers arrived, probably from multiple source populations. After its first detection in September 2010, *P. pusilla* was recorded within the following two months. Then, it was not recorded until it was recorded again in the summer of 2011, associated with the absence and presence, respectively, of its main host, *Eudendrium racemosum* (Ros and Guerra-García 2012). In this year, some haplotypes (H1, H2, H4, and H6) found on the initial discovery of the species, were present with higher frequency, but other haplotypes disappeared (H5 and H7) (Fig. 2). These results could indicate that, even during periods when *P. pusilla* was not observed, some individuals could have persisted but remained undetected, due to low abundances (Carlton 2009), and re-established the population when favourable conditions (higher temperatures in summer and presence of *E. racemosum*) returned. Moreover, the presence of new haplotypes (H3 and H8) (Fig. 2) and the weak but significant differences observed between 2010 and 2011 (Fig. 3) could both indicate the existence of a previous bottleneck that unmasked the presence of these haplotypes or that new introductions from nearby populations also occurred. After 2011, *P. pusilla* was not observed during a period of several years until a few individuals appeared in December 2016. Interestingly, these individuals were detected after the finding of this species in a nearby marina (San Fernando, ESSFN in the present study) three months earlier. The presence of the haplotype H4 and the reappearance of the haplotype H7 in ESCAD population, both present in the ESSFN population (Table 3; Fig. 2), clearly

suggest a link between these populations. In 2017, more individuals were found at the Cadiz marina and the presence of a new haplotype, only present in ESSFN population (H9), was observed (Fig. 2). This indicates that the reappearance of *P. pusilla* in the Cadiz marina is likely due to the arrival of new propagules from the ESSFN population that resulted in a successful establishment. The decrease in genetic diversity observed (Suppl. material 4, Table S3) consistent with the increasing dominance of one haplotype (H4) (which was not the commonest in the introduced range), indicates that the Cadiz marina population was re-established by a small number of founding individuals (“founder effect”; see Novak 2007; Pérez-Portela et al. 2012; Bayha et al. 2015; Rius et al. 2015). The founder effect is expected to influence the likelihood of long-time survival of NIS, either by reducing the evolutionary potential for adaptation to novel habitat conditions (Sakai et al. 2001; Willi et al. 2006) which inhibit adaptive potential, or by exposing populations to the negative effects of inbreeding (Sakai et al. 2001; Charlesworth and Willis 2009), and the success of the introduction and invasion can be significantly compromised as a result (Sakai et al. 2001; Novak 2007; Wellband et al. 2017). However, some studies have shown that this is not always true, and that low levels of genetic diversity do not prevent the success and spread of non-indigenous species (Roman and Darling 2007; Pérez-Portela et al. 2012; Bariche et al. 2017). Results from the neutrality tests (Table 7) indicate that the Cadiz marina population was not under an expansion phase. This, together with the absence of *P. pusilla* for five consecutive years, suggest that the long-term establishment and success of this species may be compromised. Rather than founder effect, the instability of *P. pusilla* at its westernmost limit in Europe, could be the result of ecological and environmental factors, one of them being the water temperature, as *P. pusilla* is a tropical species and has been mostly found in summer months in its introduced range (Ros and Guerra-García 2012; Ros et al. 2013a). However, the high recreational boating pressure that occurs in this area could increase genetic diversity over time, increasing the likelihood of local adaptation and therefore allowing the expansion of its invaded range. It would be interesting if further temporal genetic analysis could be addressed, preferentially monthly, in all European introduced populations to determine the current status of genetic diversity in this species, and thus, to fully understand how genetic diversity is influencing its introduction process.

Together with the increase in maritime traffic, climate change directly or indirectly increases the spread of NIS into new areas (Carlton 2000; Molinos et al. 2016; Hulme 2017), some of them establishing populations where they previously could not survive (Carlton 2000; Hellmann et al. 2008; Mellin et al. 2016). The increase in the average surface seawater temperatures of the Mediterranean during the last two decades has affected the distribution and abundance of native and non-native species, leading to an enlarged pool of non-native species that have become established and expanded their distributions (Coll et al. 2010; Ulman et al. 2017). This explains why tropical species, such as *P. pusilla*, are penetrating into temperate ecosystems. In fact, the high number of private haplotypes and the star-shaped haplotype network observed in the present study, seems to be a result of the propagule pressure from the species’ range in

the tropical regions. The occurrence of *P. pusilla* inside marinas, its association with the fouling communities of ships, its ability to spread locally by rafting on detached fragments of these fouling communities (Ros et al. 2016a), and its fecundity (greater than another caprellid, *Caprella scaura*, introduced in this area; Ros et al. 2013c), suggest possible future introductions to other Mediterranean and adjacent localities.

Conclusions

Our study constitutes the first molecular approach to verify *P. pusilla* as a neocosmopolitan species, which has been introduced in European waters from multiple introduction pathways likely including at least populations from Brazil. Molecular, ecological and biogeographic evidences point to the Atlantic coast of Central and South America as the likely native range of *P. pusilla*. While the species appears to be expanding in the Mediterranean, populations from the westernmost distribution limit in Europe (the Atlantic coast of southern Spain) showed a temporal instability. This may indicate that *P. pusilla* is not fully adapted to the environmental conditions in this area, with a water temperature cooler than in the Mediterranean. Further intensive sampling including both native (especially Caribbean populations) and non-native populations of this species, as well as temporal genetic studies, are still necessary to improve knowledge on the diversity of this species in its native and introduced range, confirm the introduction pattern suggested here, and understand the ecological and evolutionary process involved in the introduction success or failure of this species in European waters.

Acknowledgements

We especially thank Elena Baeza-Rojano and Mariana Lacerda who kindly provided samples from Mexico (Sisal and Celestún) and Brazil (Paranaguá Bay), respectively. Financial support for this study was provided by the Consejería de Economía, Innovación, Ciencia y Empleo, Junta de Andalucía (Project P11-RNM-7041), by Ministerio De Ciencia, Innovación y Universidades (Project CGL2017-82739-P co-financed by the Agencia Estatal de Investigación and Fondo Europeo de Desarrollo Regional [FEDER]), by FEDER funds through the Programa Operacional Factores de Competitividade and national funds through Fundação para a Ciência e a Tecnologia – within the scope of the project FCOMP-01-0124-FEDER-PTDC/MAR/118205/2010, and by Norte Portugal Regional Operational Programme (NORTE2020), under the PORTUGAL 2020 Partnership Agreement, through the European Regional Development Fund (ERDF) under the project MarInfo (NORTE-01-0145-FEDER-000031). Abir Fersi is a PhD student at Sfax University (Tunisia) and Caen Normandy University (France); she received financial support from Sfax University and UMR M2C Caen for a four-month stay in Caen from September to December 2017. We thank the subject editor Adam Petrusek and the two reviewers whose helpful comments improved the manuscript.

References

- Akaike H (1974) A new look at the statistical model identification. *IEEE Transactions on Automatic Control* 19: 716–723. <https://doi.org/10.1109/TAC.1974.1100705>
- Alarcón-Ortega LC, Rodríguez-Troncoso AP, Cupul-Magaña AL (2015) First record of non-indigenous *Paracaprella pusilla* Mayer, 1890 (Crustacea: Amphipoda) in the Northern Tropical East Pacific. *BioInvasions Records* 4: 211–215. <https://doi.org/10.3391/bir.2015.4.3.10>
- Alfaro-Montoya J, Ramírez-Alvarado M (2018) First record of non-indigenous *Paracaprella pusilla* Mayer, 1890 (Crustacea: Amphipoda: Caprellidae) in Golfo de Nicoya, Pacific Coast of Costa Rica. *BioInvasions Records* 7: 1–5. <https://doi.org/10.3391/bir.2018.7.3.08>
- Almón B, Pérez J, Bañón R, Trigo J (2014) First record of *Caprella mutica* from the Iberian Peninsula: expansion southwards in European waters. *Marine Biodiversity Records* 7: e30. <https://doi.org/10.1017/S1755267214000335>
- AquaNIS EB (2015) Information system on Aquatic Non-Indigenous and Cryptogenic Species. Version 2.36+. <http://www.corpi.ku.lt/databases/aquanis>. Accessed on: 2018-10-09.
- Ashton GV (2006) Distribution and dispersal of the non-native caprellid amphipod, *Caprella mutica* Schurin 1935. PhD thesis, University of Aberdeen, Aberdeen, Scotland, 192 pp.
- Ashton GV, Burrows MT, Willis KJ, Cook EJ (2010) Seasonal population dynamics of the non-native *Caprella mutica* (Crustacea, Amphipoda) on the west coast of Scotland. *Marine and Freshwater Research* 61: 549–559. <https://doi.org/10.1071/MF09162>
- Ashton GV, Stevens MI, Hart MC, Green DH, Burrows MT, Cook EJ, Willis KJ (2008) Mitochondrial DNA reveals multiple Northern Hemisphere introductions of *Caprella mutica* (Crustacea, Amphipoda). *Molecular Ecology* 17: 1293–1303. <https://doi.org/10.1111/j.1365-294X.2007.03668.x>
- Balaguer P, Diedrich A, Sardá R, Fuster M, Cañellas B, Tintoré J (2011) Spatial analysis of recreational boating as a first key step for marine spatial planning in Mallorca (Balearic Islands, Spain). *Ocean & Coastal Management* 54: 241–249. <https://doi.org/10.1016/j.ocecoaman.2010.12.002>
- Bariche M, Kleitou P, Kalogirou S, Bernardi G (2017) Genetics reveal the identity and origin of the lionfish invasion in the Mediterranean Sea. *Scientific Reports* 7: 6782. <https://doi.org/10.1038/s41598-017-07326-1>
- Bax N, Williamson A, Aguero M, Gonzalez E, Geeves W (2003) Marine invasive alien species: a threat to global biodiversity. *Marine Policy* 27: 313–323. [https://doi.org/10.1016/S0308-597X\(03\)00041-1](https://doi.org/10.1016/S0308-597X(03)00041-1)
- Bayha KM, Chang MH, Mariani CL, Richardson JL, Edwards DL, DeBoer TS, Moseley C, Aksoy E, Decker MB, Gaffney PM, Harbison GR, McDonald JH, Caccone A (2015) Worldwide phylogeography of the invasive ctenophore *Mnemiopsis leidyi* (Ctenophora) based on nuclear and mitochondrial DNA data. *Biological Invasions* 17: 827–850. <https://doi.org/10.1007/s10530-014-0770-6>
- Booth DJ, Poloczanska E, Donelson JM, García Molinos J, Burrows M (2017) Biodiversity and climate change in the oceans. In: Phillips BF, Pérez-Ramírez M (Eds) *Climate Change Impacts on Fisheries and Aquaculture*. John Wiley & Sons, Chichester, UK, 63–89. <https://doi.org/10.1002/9781119154051.ch4>

- Boudouresque C-F, Blanfuné A, Fernandez C, Lejeusne C, Pérez T, Ruitton S, Thibault D, Thibaut T, Verlaque M (2017) Marine Biodiversity - Warming vs. Biological Invasions and overfishing in the Mediterranean Sea: Take care, 'One Train can hide another'. *MOJ Ecology & Environmental Science* 2: 1–13. <https://doi.org/10.15406/mojes.2017.02.00031>
- Cabezas M, Cabezas P, Machordom A, Guerra-García JM (2013a) Hidden diversity and cryptic speciation refute cosmopolitan distribution in *Caprella penantis* (Crustacea: Amphipoda: Caprellidae). *Journal of Zoological Systematics and Evolutionary Research* 51: 85–99. <https://doi.org/10.1111/jzs.12010>
- Cabezas MP, Navarro-Barranco C, Ros M, Guerra-García JM (2013b) Long-distance dispersal, low connectivity and molecular evidence of a new cryptic species in the obligate rafter *Caprella andreae* Mayer, 1890 (Crustacea: Amphipoda: Caprellidae). *Helgoland Marine Research* 67: 483–497. <https://doi.org/10.1007/s10152-012-0337-9>
- Cabezas MP, Xavier R, Branco M, Santos AM, Guerra-García JM (2014) Invasion history of *Caprella scaura* Templeton, 1836 (Amphipoda: Caprellidae) in the Iberian Peninsula: multiple introductions revealed by mitochondrial sequence data. *Biological Invasions* 16: 2221–2245. <https://doi.org/10.1007/s10530-014-0660-y>
- Carlton JT (1989) Man's role in changing the face of the ocean: biological invasions and implications for conservation of near-shore environments. *Conservation Biology* 3: 265–273. <https://doi.org/10.1111/j.1523-1739.1989.tb00086.x>
- Carlton JT (1996) Biological Invasions and Cryptogenic Species. *Ecology* 77: 1653–1655. <https://doi.org/10.2307/2265767>
- Carlton JT (1999) The scale and ecological consequences of biological invasions in the world's oceans. In: Sandlund O, Schei P, Viken A (Eds) *Invasive species and biodiversity management*. Kluwer Academic Publishers, Dordrecht, The Netherlands, 195–212. https://doi.org/10.1007/978-94-011-4523-7_13
- Carlton JT (2000) Global change and biological invasions in the oceans. In: Mooney H, Hobbs R (Eds) *Invasive species in a changing world*. Island Press, Washington, DC, 31–53.
- Carlton JT (2003) Community assembly and historical biogeography in the North Atlantic Ocean: the potential role of human-mediated dispersal vectors. *Hydrobiologia* 503: 1–8. <https://doi.org/10.1023/B:HYDR.0000008479.90581.e1>
- Carlton JT (2009) Deep invasion ecology and the assembly of communities in historical time. In: Rilov G, Crooks J (Eds) *Biological Invasions in Marine Ecosystems*. Springer-Verlag, Berlin, 13–56 https://doi.org/10.1007/978-3-540-79236-9_2
- Carlton JT (2011) The global dispersal of marine and estuarine crustaceans. In: Galil BS, Clark PF, Carlton JT (Eds) *In the Wrong Place – Alien Marine Crustaceans: Distribution, Biology and Impacts*. Springer Netherlands, Dordrecht, 3–23. https://doi.org/10.1007/978-94-007-0591-3_1
- Carlton JT, Cohen AN (2003) Episodic global dispersal in shallow water marine organisms: the case history of the European shore crabs *Carcinus maenas* and *C. aestuarii*. *Journal of Biogeography* 30: 1809–1820. <https://doi.org/10.1111/j.1365-2699.2003.00962.x>
- Carlton JT, Eldredge LG (2009) Marine bioinvasions of Hawai'i : the introduced and cryptogenic marine and estuarine animals and plants of the Hawaiian Archipelago. Bernice P. Bishop Museum, Honolulu, Hawai'i, 202 pp.

- Castresana J (2000) Selection of conserved blocks from multiple alignments for their use in phylogenetic analysis. *Molecular Biology and Evolution* 17: 540–552. <https://doi.org/10.1093/oxfordjournals.molbev.a026334>
- Charlesworth D, Willis JH (2009) The genetics of inbreeding depression. *Nature Reviews Genetics* 10: 783. <https://doi.org/10.1038/nrg2664>
- Chu KH, Li CP, Ho HY (2001) The first internal transcribed spacer (ITS-1) of ribosomal DNA as a molecular marker for phylogenetic and population analyses in Crustacea. *Marine Biotechnology* 3: 355–361. <https://doi.org/10.1007/s10126001-0014-5>
- Clement M, Posada D, Crandall KA (2000) TCS: a computer program to estimate gene genealogies. *Molecular Ecology* 9: 1657–1659. <https://doi.org/10.1046/j.1365-294x.2000.01020.x>
- Coll M, Piroddi C, Steenbeek J, Kaschner K, Ben Rais Lasram F, Aguzzi J, Ballesteros E, Bianchi CN, Corbera J, Dailianis T, Danovaro R, Estrada M, Froglija C, Galil BS, Gasol JM, Gertwagen R, Gil J, Guilhaumon F, Kesner-Reyes K, Kitsos M-S, Koukouras A, Lampadariou N, Laxamana E, López-Fé de la Cuadra CM, Lotze HK, Martin D, Mouillot D, Oro D, Raicevich S, Rius-Barile J, Saiz-Salinas JI, San Vicente C, Somot S, Templado J, Turon X, Vafidis D, Villanueva R, Voultsiadou E (2010) The biodiversity of the Mediterranean Sea: estimates, patterns, and threats. *PLoS One* 5: e11842. <https://doi.org/10.1371/journal.pone.0011842>
- Darling JA, Carlton JT (2018) A framework for understanding marine cosmopolitanism in the Anthropocene. *Frontiers in Marine Science* 5: 293. <https://doi.org/10.3389/fmars.2018.00293>
- Davidson AD, Hewitt CL, Kashian DR (2015) Understanding acceptable level of risk: incorporating the economic cost of under-managing invasive species. *PLoS One* 10: e0141958. <https://doi.org/10.1371/journal.pone.0141958>
- Díaz Y, Guerra-García JM, Martín A (2005) Caprellids (Crustacea: Amphipoda: Caprellidae) from shallow waters of the Caribbean coast of Venezuela. *Organisms Diversity & Evolution* 5: 249–251. <https://doi.org/10.1016/j.ode.2004.11.010>
- Dobler J (2002) Analysis of shipping patterns in the Mediterranean and Black seas. Alien marine organisms introduced by ships in the Mediterranean and Black seas. *CIESM Workshop Monographs* 20: 19–28.
- Drake JM, Lodge DM (2004) Global hot spots of biological invasions: evaluating options for ballast-water management. *Proceedings of the Royal Society B: Biological Sciences* 271: 575–580. <https://doi.org/10.1098/rspb.2003.2629>
- EC (2008) Directive 2008/56/EC of the European Parliament and of the Council of 17 June 2008 establishing a framework for community action in the field of marine environmental policy (Marine Strategy Framework Directive). *Official Journal of the European Union* 164: 19–40.
- EC (2014) Report from the Commission to the European Parliament and the Council. The mid-term review of the EU Biodiversity Strategy to 2020. European Commission Report, Brussels, Belgium, 19 pp.
- Edgar RC (2004) MUSCLE: multiple sequence alignment with high accuracy and high throughput. *Nucleic Acids Research* 32: 1792–1797. <https://doi.org/10.1093/nar/gkh340>

- Edgecombe GD, Giribet G (2006) A century later a total evidence re-evaluation of the phylogeny of scutigermorph centipedes (Myriapoda: Chilopoda). *Invertebrate Systematics* 20: 503–525. <https://doi.org/10.1071/IS05044>
- El-Komi M (1998) Spatiotemporal distribution of fouling and plankton composition in the coastal waters of Alexandria, Egypt. *Journal of Egyptian German Society of Zoology* 27: 183–208.
- Emara A, Belal A (2004) Marine fouling in Suez Canal Egypt. *Egyptian Journal of Aquatic Research* 30: 189–206.
- Excoffier L, Lischer HEL (2010) Arlequin suite ver 3.5: a new series of programs to perform population genetics analyses under Linux and Windows. *Molecular Ecology Resources* 10: 564–567. <https://doi.org/10.1111/j.1755-0998.2010.02847.x>
- Excoffier L, Smouse PE, Quattro JM (1992) Analysis of molecular variance inferred from metric distances among DNA haplotypes: application to human mitochondrial DNA restriction data. *Genetics* 131: 479–491.
- Farrapeira CMR, Tenório DdO, Amaral FDd (2011) Vessel biofouling as an inadvertent vector of benthic invertebrates occurring in Brazil. *Marine Pollution Bulletin* 62: 832–839. <https://doi.org/10.1016/j.marpolbul.2010.12.014>
- Fersi A, Dauvin JC, Pezy JP, Neifar L (2018) Amphipods from tidal channels of the Gulf of Gabès (central Mediterranean Sea). *Mediterranean Marine Science* 0: 430–443. <https://doi.org/10.12681/mms.15913>
- Folmer O, Black M, Hoeh W, Lutz R, Vrijenhoek R (1994) DNA primers for amplification of mitochondrial cytochrome c oxidase subunit I from diverse metazoan invertebrates. *Molecular Marine Biology and Biotechnology* 3: 294–299.
- Foster J, Thomas B, Heard R (2004) Range extensions and review of the caprellid amphipods (Crustacea: Amphipoda: Caprellidae) from the shallow, coastal waters from the Suwannee River, Florida, to Port Aransas, Texas, with an illustrated key. *Gulf and Caribbean Research* 16: 161–175. <https://doi.org/10.18785/gcr.1602.04>
- Fu Y-X (1997) Statistical tests of neutrality of mutations against population growth, hitchhiking and background selection. *Genetics* 147: 915–925.
- Galil B, Marchini A, Occhipinti-Ambrogi A, Ojaveer H (2017) The enlargement of the Suez Canal – Erythraean introductions and management challenges. *Management of Biological Invasions* 8: 141–152. <https://doi.org/10.3391/mbi.2017.8.2.02>
- Galil BS, Marchini A, Occhipinti-Ambrogi A (2018) East is east and West is west? Management of marine bioinvasions in the Mediterranean Sea. *Estuarine, Coastal and Shelf Science* 201: 7–16. <https://doi.org/10.1016/j.ecss.2015.12.021>
- Geller J, Meyer C, Parker M, Hawk H (2013) Redesign of PCR primers for mitochondrial cytochrome c oxidase subunit I for marine invertebrates and application in all-taxa biotic surveys. *Molecular Ecology Resources* 13: 851–861. <https://doi.org/10.1111/1755-0998.12138>
- Geller JB, Darling JA, Carlton JT (2010) Genetic perspectives on marine biological invasions. *Annual Review of Marine Science* 2: 367–393. <https://doi.org/10.1146/annurev.marine.010908.163745>
- Gillon A, Costa AC, Micael J (2017) *Caprella scaura* Templeton, 1836: an invasive caprellid new to the Azores archipelago. *Marine Biodiversity* 47: 499–510. <https://doi.org/10.1007/s12526-016-0485-2>

- Guerra-García JM (2006) Caprellidae (Crustacea: Amphipoda) from the Great Barrier Reef and adjacent localities. *Records of the Australian Museum* 58: 417–458. <https://doi.org/10.3853/j.0067-1975.58.2006.1451>
- Guerra-García JM, Ganesh T, Jaikumar M, Raman AV (2010) Caprellids (Crustacea: Amphipoda) from India. *Helgoland Marine Research* 64: 297–310. <https://doi.org/10.1007/s10152-009-0183-6>
- Harpending HC (1994) Signature of ancient population growth in a low-resolution mitochondrial DNA mismatch distribution. *Human Biology* 66: 591–600.
- Haydar D, Hoarau G, Olsen JL, Stam WT, Wolff WJ (2011) Introduced or glacial relict? Phylogeography of the cryptogenic tunicate *Molgula manhattensis* (Ascidiacea, Pleurogona). *Diversity and Distributions* 17: 68–80. <https://doi.org/10.1111/j.1472-4642.2010.00718.x>
- Hellmann JJ, Byers JE, Bierwagen BG, Dukes JS (2008) Five potential consequences of climate change for invasive species. *Conservation Biology* 22: 534–543. <https://doi.org/10.1111/j.1523-1739.2008.00951.x>
- Holland BS (2000) Genetics of marine bioinvasions. *Hydrobiologia* 420: 63–71. <https://doi.org/10.1023/A:1003929519809>
- Hulme PE (2017) Climate change and biological invasions: evidence, expectations, and response options. *Biological Reviews* 92: 1297–1313. <https://doi.org/10.1111/brv.12282>
- Kaluza P, Kölzsch A, Gastner MT, Blasius B (2010) The complex network of global cargo ship movements. *Journal of The Royal Society Interface*: 1093–1103. <https://doi.org/10.1098/rsif.2009.0495>
- Katoh K, Standley DM (2013) MAFFT Multiple sequence alignment software version 7: improvements in performance and usability. *Molecular Biology and Evolution* 30: 772–780. <https://doi.org/10.1093/molbev/mst010>
- Katsanevakis S, Tempera F, Teixeira H (2016) Mapping the impact of alien species on marine ecosystems: the Mediterranean Sea case study. *Diversity and Distributions* 22: 694–707. <https://doi.org/10.1111/ddi.12429>
- Katsanevakis S, Wallentinus I, Zenetos A, Leppäkoski E, Çınar ME, Öztürk B, Grabowski M, Golani D, Cardoso AC (2014) Impacts of invasive alien marine species on ecosystem services and biodiversity: a pan-European review. *Aquatic Invasions* 9: 391–423. <https://doi.org/10.3391/ai.2014.9.4.01>
- Katsanevakis S, Zenetos A, Belchior C, Cardoso AC (2013) Invading European Seas: assessing pathways of introduction of marine aliens. *Ocean & Coastal Management* 76: 64–74. <https://doi.org/10.1016/j.ocecoaman.2013.02.024>
- Kumar S, Stecher G, Tamura K (2016) MEGA7: Molecular Evolutionary Genetics Analysis version 7.0 for bigger datasets. *Molecular Biology and Evolution* 33: 1870–1874. <https://doi.org/10.1093/molbev/msw054>
- Lacerda MB, Masunari S (2014) A new species of *Paracaprella* Mayer, 1890 (Amphipoda: Caprellida: Caprellidae) from southern Brazil. *Zootaxa* 3900: 437–445. <https://doi.org/10.11646/zootaxa.3900.3.7>
- Lanfear RB, Frandsen PM, Wright A, Senfeld T, Calcott B (2016) PartitionFinder 2: New methods for selecting partitioned models of evolution for molecular and morphological phylogenetic analyses. *Molecular Biology and Evolution* 34: 772–773. <https://doi.org/10.1093/molbev/msw260>

- Lowry E, Rollinson EJ, Laybourn AJ, Scott TE, Aiello-Lammens ME, Gray SM, Mickley J, Gurevitch J (2013) Biological invasions: a field synopsis, systematic review, and database of the literature. *Ecology and Evolution* 3: 182–196. <https://doi.org/10.1002/ece3.431>
- Macdonald KS, Yampolsky L, Duffy JE (2005) Molecular and morphological evolution of the amphipod radiation of Lake Baikal. *Molecular Phylogenetics and Evolution* 35: 323–343. <https://doi.org/10.1016/j.ympev.2005.01.013>
- Marchini A, Cardecia A (2017) Alien amphipods in a sea of troubles: cryptogenic species, unresolved taxonomy and overlooked introductions. *Marine Biology* 164: 69. <https://doi.org/10.1007/s00227-017-3093-1>
- Martinez J, Adarraga I (2008) First record of invasive caprellid *Caprella scaura* Templeton, 1836 sensu lato (Crustacea: Amphipoda: Caprellidae) from the Iberian Peninsula. *Aquatic Invasions* 3: 165–171. <https://doi.org/10.3391/ai.2008.3.2.6>
- Mauro FdM, Serejo CS (2015) The family Caprellidae (Amphipoda: Caprelloidea: Caprellidae) from Campos Basin, Southwestern Atlantic, with a key of species occurring in Brazil. *2015 4006*: 25. <https://doi.org/10.11646/zootaxa.4006.1.5>
- Mayer P (1890) Die caprelliden des golfes von Neapel und der angrenzenden meeres-abschnitte. *Fauna und Flora des Golfes von Neapel* 17: 1–55. <https://doi.org/10.5962/bhl.title.10555>
- Mayer P (1903) Die Caprelliden der Siboga-Expedition. *Siboga Expedition* 34: 1–160. <https://doi.org/10.5962/bhl.title.53742>
- McCain JC (1968) The Caprellidae (Crustacea: Amphipoda) of the western North Atlantic. *Bulletin – United States National Museum* 278: 1–47. <https://doi.org/10.5962/bhl.part.8960>
- Mellin C, Lurgi M, Matthews S, MacNeil MA, Caley MJ, Bax N, Przeslawski R, Fordham DA (2016) Forecasting marine invasions under climate change: Biotic interactions and demographic processes matter. *Biological Conservation* 204: 459–467. <https://doi.org/10.1016/j.biocon.2016.11.008>
- Minchin D, Floerl O, Savini D, Occhipinti-Ambrogi A (2006) Small craft and the spread of exotic species. In: Davenport J, Davenport JL (Eds) *The Ecology of Transportation: Managing Mobility for the Environment*. Springer Netherlands (Dordrecht): 99–118. https://doi.org/10.1007/1-4020-4504-2_6
- Molinos JG, Halpern BS, Schoeman DS, Brown Christopher J, Kiessling W, Moore PJ, Pandolfi JM, Poloczanska ES, Richardson Anthony J, Burrows MT (2016) Climate velocity and the future global redistribution of marine biodiversity. *Nature Climate Change* 6: 83. <https://doi.org/10.1038/nclimate2769>
- Molnar JL, Gamboa RL, Revenga C, Spalding MD (2008) Assessing the global threat of invasive species to marine biodiversity. *Frontiers in Ecology and the Environment* 6: 485–492. <https://doi.org/10.1890/070064>
- Nei M (1987) *Molecular Evolutionary Genetics*. Columbia University Press (New York): 1–512. <https://doi.org/10.7312/nei-92038>
- Novak SJ (2007) The role of evolution in the invasion process. *Proceedings of the National Academy of Sciences* 104: 3671–3672. <https://doi.org/10.1073/pnas.0700224104>
- Ojaveer H, Galil BS, Campbell ML, Carlton JT, Canning-Clode J, Cook EJ, Davidson AD, Hewitt CL, Jelmert A, Marchini A, McKenzie CH, Minchin D, Occhipinti-Ambrogi A, Olenin S, Ruiz G (2015) Classification of non-indigenous species based on their impacts:

- considerations for application in marine management. *PLOS Biology* 13: e1002130. <https://doi.org/10.1371/journal.pbio.1002130>
- Olenin S, Alemany F, Cardoso A, Gollasch S, Gouletquer P, Lehtiniemi M, McCollin T, Minchin D, Miossec L, Occhipinti-Ambrogi A, Ojaveer H, Jensen KR, Stankiewicz M, Wallentinus I, Aleksandrov B (2010) Marine Strategy Framework Directive - Task Group 2 Non-indigenous Species. In: Piha H (Ed.) JRC Scientific and Technical Reports, Luxembourg, 45 pp. <https://doi.org/10.2788/87092>
- Palumbi SR, Martin A, Romano S, McMillan WV, Stice L, Grabowski G (1991) The simple fool's guide to PCR. version 2.0. University of Hawaii: 1–45.
- Paradis E, Claude J, Strimmer K (2004) APE: Analyses of Phylogenetics and Evolution in R language. *Bioinformatics* 20: 289–290. <https://doi.org/10.1093/bioinformatics/btg412>
- Pérez-Portela R, Turon X, Bishop JDD (2012) Bottlenecks and loss of genetic diversity: spatio-temporal patterns of genetic structure in an ascidian recently introduced in Europe. *Marine Ecology Progress Series* 451: 93–105. <https://doi.org/10.3354/meps09560>
- Pilgrim EM, Darling JA (2010) Genetic diversity in two introduced biofouling amphipods (*Ampithoe valida* & *Jassa marmorata*) along the Pacific North American coast: investigation into molecular identification and cryptic diversity. *Diversity and Distributions* 16: 827–839. <https://doi.org/10.1111/j.1472-4642.2010.00681.x>
- Pond S, Poon A, Frost S (2009) Estimating selection pressures on alignments of coding sequences. In: Lemey P, Salemi M, Vandamme A (Eds) *The phylogenetic handbook: a practical approach to phylogenetic analysis and hypothesis testing*. Cambridge University Press, Cambridge, UK, 419–490. <https://doi.org/10.1017/CBO9780511819049.016>
- Rambaut A (2017) FigTree-version 1.4.3, a graphical viewer of phylogenetic trees. <http://tree.bio.ed.ac.uk/software/figtree>.
- Rambaut A, Drummond AJ, Xie D, Baele G, Suchard MA (2018) Posterior summarization in Bayesian phylogenetics using Tracer 1.7. *Systematic Biology* 67: 901–904. <https://doi.org/10.1093/sysbio/syy032>
- Rius M, Turon X, Bernardi G, Volckaert FAM, Viard F (2015) Marine invasion genetics: from spatio-temporal patterns to evolutionary outcomes. *Biological Invasions* 17: 869–885. <https://doi.org/10.1007/s10530-014-0792-0>
- Rocha RM, Vieira LM, Migotto AE, Amaral ACZ, Ventura CRR, Serejo CS, Pitombo FB, Santos KC, Simone LRL, Tavares M, Lopes RM, Pinheiro U, Marques AC (2013) The need of more rigorous assessments of marine species introductions: A counter example from the Brazilian coast. *Marine Pollution Bulletin* 67: 241–243. <https://doi.org/10.1016/j.marpollbul.2012.12.009>
- Rogers AR, Harpending H (1992) Population growth makes waves in the distribution of pairwise genetic differences. *Molecular Biology and Evolution* 9: 552–569. <https://doi.org/10.1093/oxfordjournals.molbev.a040727>
- Roman J, Darling JA (2007) Paradox lost: genetic diversity and the success of aquatic invasions. *Trends in Ecology & Evolution* 22: 454–464. <https://doi.org/10.1016/j.tree.2007.07.002>
- Ronquist F, Teslenko M, van der Mark P, Ayres DL, Darling A, Höhna S, Larget B, Liu L, Suchard MA, Huelsenbeck JP (2012) MrBayes 3.2: efficient Bayesian phylogenetic inference and model choice across a large model space. *Systematic Biology* 61: 539–542. <https://doi.org/10.1093/sysbio/sys029>

- Ros M, Ashton GV, Lacerda MB, Carlton JT, Vázquez-Luis M, Guerra-García JM, Ruiz GM (2014) The Panama Canal and the transoceanic dispersal of marine invertebrates: Evaluation of the introduced amphipod *Paracaprella pusilla* Mayer, 1890 in the Pacific Ocean. *Marine Environmental Research* 99: 204–211. <https://doi.org/10.1016/j.marenvres.2014.07.001>
- Ros M, Guerra-García JM (2012) On the occurrence of the tropical caprellid *Paracaprella pusilla* Mayer, 1890 (Crustacea: Amphipoda) in Europe. *Mediterranean Marine Science* 13: 134–139. <https://doi.org/10.12681/mms.30>
- Ros M, Guerra-García JM, González-Macías M, Saavedra Á, López-Fe CM (2013a) Influence of fouling communities on the establishment success of alien caprellids (Crustacea: Amphipoda) in Southern Spain. *Marine Biology Research* 9: 261–273. <https://doi.org/10.1080/17451000.2012.739695>
- Ros M, Guerra-García JM, Hoffman R (2016a) First record of the exotic caprellid amphipod *Paracaprella pusilla* Mayer, 1890 in the eastern Mediterranean. *Marine Biodiversity* 46: 281–284. <https://doi.org/10.1007/s12526-015-0311-2>
- Ros M, Lacerda MB, Vázquez-Luis M, Masunari S, Guerra-García JM (2016b) Studying exotics in their native range: Can introduced fouling amphipods expand beyond artificial habitats? *Biological Invasions* 18: 2983–3000. <https://doi.org/10.1007/s10530-016-1191-5>
- Ros M, Vázquez-Luis M, Guerra-García JM (2013b) The role of marinas and recreational boating in the occurrence and distribution of exotic caprellids (Crustacea: Amphipoda) in the Western Mediterranean: Mallorca Island as a case study. *Journal of Sea Research* 83: 94–103. <https://doi.org/10.1016/j.seares.2013.04.004>
- Ros M, Vázquez-Luis M, Guerra-García JM (2013c) The tropical caprellid amphipod *Paracaprella pusilla*: a new alien crustacean in the Mediterranean Sea. *Helgoland Marine Research* 67: 675–685. <https://doi.org/10.1007/s10152-013-0353-4>
- Rozas J, Ferrer-Mata A, Sánchez-DelBarrio JC, Guirao-Rico S, Librado P, Ramos-Onsins SE, Sánchez-Gracia A (2017) DnaSP 6: DNA Sequence Polymorphism analysis of large data sets. *Molecular Biology and Evolution* 34: 3299–3302. <https://doi.org/10.1093/molbev/msx248>
- Rozas J, Ramos-Onsins SE (2002) Statistical properties of new neutrality tests against population growth. *Molecular Biology and Evolution* 19: 2092–2100. <https://doi.org/10.1093/oxfordjournals.molbev.a004034>
- RStudio Team (2016) RStudio: Integrated Development for R. RStudio, Boston, MA. <http://www.rstudio.com/>.
- Ruiz GM, Carlton JT, Grosholz ED, Hines AH (1997) Global invasions of marine and estuarine habitats by non-indigenous species: mechanisms, extent, and consequences. *American Zoologist* 37: 621–632. <https://doi.org/10.1093/icb/37.6.621>
- Sakai AK, Allendorf FW, Holt JS, Lodge DM, Molofsky J, With KA, Baughman S, Cabin RJ, Cohen JE, Ellstrand NC, McCauley DE, O'Neil P, Parker IM, Thompson JN, Weller SG (2001) The population biology of invasive species. *Annual Review of Ecology and Systematics* 32: 305–332. <https://doi.org/10.1146/annurev.ecolsys.32.081501.114037>
- Salemi M (2009) Genetic distances and nucleotide substitution models. In: Lemey P, Salemi M, Vandamme A (Eds) *The Phylogenetic Handbook: A Practical Approach to Phylogenetic Analysis and Hypothesis Testing*. Cambridge University Press, New York, 126–140.

- Sánchez-Moyano JE, García-Asencio I, Guerra-García JM (2015) Littoral caprellids (Crustacea: Amphipoda) from the Mexican Central Pacific coast, with the description of four new species. *Journal of Natural History* 49: 77–127. <https://doi.org/10.1080/00222933.2014.937366>
- Santos AM, Cabezas MP, Tavares AI, Xavier R, Branco M (2016) tcsBU: a tool to extend TCS network layout and visualization. *Bioinformatics* 32: 627–628. <https://doi.org/10.1093/bioinformatics/btv636>
- Schellenberg A (1928) Report on the Amphipoda. Zoological results of the Cambridge Expedition to Suez Canal, 1924. *Transactions of the Linnean Society of London* 22: 633–692. <https://doi.org/10.1111/j.1096-3642.1928.tb00209.x>
- Schneider S, Excoffier L (1999) Estimation of past demographic parameters from the distribution of pairwise differences when the mutation rates vary among sites: application to human mitochondrial DNA. *Genetics* 152: 1079–1089.
- Sconfiatti R, Danesi P (1996) Variazioni strutturali in comunità di peracaridi agli estremi opposti del bacino di Malamocco (Laguna di Venezia). *Società Italiana di Ecologia* 17: 407–410.
- Seebens H, Gastner MT, Blasius B (2013) The risk of marine bioinvasion caused by global shipping. *Ecology Letters* 16: 782–790. <https://doi.org/10.1111/ele.12111>
- Serejo CS (1998) Gammaridean and Caprellidean fauna (Crustacea) associated with the sponge *Dysidea fragilis* Johnston at Arraial do Cabo, Rio de Janeiro, Brazil. *Bulletin of Marine Science* 63: 363–385.
- Sherman CDH, Lotterhos KE, Richardson MF, Tepolt CK, Rollins LA, Palumbi SR, Miller AD (2016) What are we missing about marine invasions? Filling in the gaps with evolutionary genomics. *Marine Biology* 163: 198. <https://doi.org/10.1007/s00227-016-2961-4>
- Spalding MD, Fox HE, Allen GR, Davidson N, Ferdaña ZA, Finlayson M, Halpern BS, Jorge MA, Lombana A, Lourie SA, Martin KD, McManus E, Molnar J, Recchia CA, Robertson J (2007) Marine ecoregions of the world: a bioregionalization of coastal and shelf areas. *BioScience* 57: 573–583. <https://doi.org/10.1641/B570707>
- Stamatakis A (2008) The RAxML 7.0.4. Department of Computer Science Ludwig-Maximilians-Universität München.
- Streftaris N, Zenetos A, Papatthanassiou F (2005) Globalisation in marine ecosystems: the story of non indigenous marine species across European seas. *Oceanography and Marine Biology Annual Review* 43: 419–453. <https://doi.org/10.1201/9781420037449.ch8>
- Strong EE, Colgan DJ, Healy JM, Lydeard C, Ponder WF, Glaubrecht M (2011) Phylogeny of the gastropod superfamily Cerithioidea using morphology and molecules. *Zoological Journal of the Linnean Society* 162: 43–89. <https://doi.org/10.1111/j.1096-3642.2010.00670.x>
- Tajima F (1989) Statistical method for testing the neutral mutation hypothesis by DNA polymorphism. *Genetics* 123: 585–595.
- Templeton AR, Crandall KA, Sing CF (1992) A cladistic analysis of phenotypic associations with haplotypes inferred from restriction endonuclease mapping and DNA sequence data. III. Cladogram estimation. *Genetics* 132: 619.
- Thiel M, Guerra-García J, Lancellotti D, Vásques N (2003) The distribution of littoral caprellids (Crustacea: Amphipoda: Caprellidea) along the Pacific coast of continental Chile. *Revista Chilena de Historia Natural* 76: 203–218. <https://doi.org/10.4067/S0716-078X2003000200014>

- Tsiamis K, Zenetos A, Deriu I, Gervasini E, Cardoso AC (2018) The native distribution range of the European marine non-indigenous species. *Aquatic Invasions* 13: 187–198. <https://doi.org/10.3391/ai.2018.13.2.01>
- Ulman A, Ferrario J, Occhpinti-Ambrogi A, Arvanitidis C, Bandi A, Bertolino M, Bogi C, Chatzigeorgiou G, Çiçek BA, Deidun A, Ramos-Esplá A, Koçak C, Lorenti M, Martinez-Laiz G, Merlo G, Princisgh E, Scribano G, Marchini A (2017) A massive update of non-indigenous species records in Mediterranean marinas. *PeerJ* 5: e3954. <https://doi.org/10.7717/peerj.3954>
- Viard F, David P, Darling JA (2016) Marine invasions enter the genomic era: three lessons from the past, and the way forward. *Current Zoology* 62: 629–642. <https://doi.org/10.1093/cz/zow053>
- Wares JP (2002) Community genetics in the Northwestern Atlantic intertidal. *Molecular Ecology* 11: 1131–1144. <https://doi.org/10.1046/j.1365-294X.2002.01510.x>
- Wasson K, Zabin CJ, Bedinger L, Cristina Diaz M, Pearse JS (2001) Biological invasions of estuaries without international shipping: the importance of intraregional transport. *Biological Conservation* 102: 143–153. [https://doi.org/10.1016/S0006-3207\(01\)00098-2](https://doi.org/10.1016/S0006-3207(01)00098-2)
- Weir BS, Cockerham CC (1984) Estimating F-Statistics for the Analysis of Population Structure. *Evolution* 38: 1358–1370. <https://doi.org/10.2307/2408641>
- Wellband KW, Pettitt-Wade H, Fisk AT, Heath DD (2017) Differential invasion success in aquatic invasive species: the role of within- and among-population genetic diversity. *Biological Invasions* 19: 2609–2621. <https://doi.org/10.1007/s10530-017-1471-8>
- Whiting MF (2002) Mecoptera is paraphyletic: multiple genes and phylogeny of Mecoptera and Siphonaptera. *Zoologica Scripta* 31: 93–104. <https://doi.org/10.1046/j.0300-3256.2001.00095.x>
- Wickham H (2016) *ggplot2: Elegant Graphics for Data Analysis*. Springer-Verlag, New York, 213 pp. <https://doi.org/10.1007/978-0-387-98141-3>
- Willi Y, Buskirk JV, Hoffmann AA (2006) Limits to the adaptive potential of small populations. *Annual Review of Ecology, Evolution, and Systematics* 37: 433–458. <https://doi.org/10.1146/annurev.ecolsys.37.091305.110145>
- Williams ST, Reid DG, Littlewood DTJ (2003) A molecular phylogeny of the Littorininae (Gastropoda: Littorinidae): unequal evolutionary rates, morphological parallelism, and biogeography of the Southern Ocean. *Molecular Phylogenetics and Evolution* 28: 60–86. [https://doi.org/10.1016/S1055-7903\(03\)00038-1](https://doi.org/10.1016/S1055-7903(03)00038-1)
- Winfield I, Escobar-Briones E, Morrone J (2006) Updated checklist and identification of areas of endemism of benthic amphipods (Caprellidea and Gammaridea) from offshore habitats in the SW Gulf of Mexico. *Scientia Marina* 70: 99–108 <https://doi.org/10.3989/scimar.2006.70n199>
- Winfield I, Ortiz M (2013) The Caprellidea (Crustacea: Peracarida: Amphipoda) from the Gulf of Mexico with a description of a new species of *Paracaprella*. *Scientia Marina* 77: 161–168. <https://doi.org/10.3989/scimar.03753.26C>
- Zeina A, Guerra-García JM (2016) Caprellidae (Crustacea: Peracarida: Amphipoda) from the Red Sea and Suez Canal, with the redescription of *Metaprotella africana* and *Paradeutella multispinosa*. *Zootaxa* 4098: 227–253. <https://doi.org/10.11646/zootaxa.4098.2.2>
- Zenetos A, Çinar ME, Crocetta F, Golani D, Rosso A, Servello G, Shenkar N, Turon X, Verlaque M (2017) Uncertainties and validation of alien species catalogues: The Mediter-

ranean as an example. *Estuarine, Coastal and Shelf Science* 191: 171–187. <https://doi.org/10.1016/j.ecss.2017.03.031>

Zenetos A, Gofas S, Morri C, Rosso A, Violanti D, Garcia Raso JE, Cinar ME, Almogi-Labin A, Ates AS, Azzurro E, Ballesteros E, Bianchi CN, Bilecenoglu M, Gambi MC, Giangrande A, Gravili C, Hyams-Kaphzan O, Karachle V, Katsanevakis S, Lipej L, Mastrototaro F, Mineur F, A. P-PM, Ramos-Esplá A, Salas S, San Martin G, Sfriso A, Strefaris N, Verlaque M (2012) Alien species in the Mediterranean Sea by 2012. A contribution to the application of European Union's Marine Strategy Framework Directive (MSFD). Part 2. Patterns in introduction trends and pathways. *Mediterranean Marine Science* 13: 328–352. <https://doi.org/10.12681/mms.327>

Supplementary material 1

Table S1. Individual code, specimen voucher, and GenBank accession numbers of COI, 16S, 28S and ITS sequences amplified

Authors: M. Pilar Cabezas, Macarena Ros, António Múrias dos Santos, Gemma Martínez-Laiz, Raquel Xavier, Lou Montelli, Razy Hoffman, Abir Fersi, Jean Claude Dauvin, José Manuel Guerra-García

Data type: molecular data

Copyright notice: This dataset is made available under the Open Database License (<http://opendatacommons.org/licenses/odbl/1.0/>). The Open Database License (ODbL) is a license agreement intended to allow users to freely share, modify, and use this Dataset while maintaining this same freedom for others, provided that the original source and author(s) are credited.

Link: <https://doi.org/10.3897/neobiota.47.32408.suppl1>

Supplementary material 2

Figure S1. Bayesian tree of mitochondrial DNA (COI+16S) haplotypes

Authors: M. Pilar Cabezas, Macarena Ros, António Múrias dos Santos, Gemma Martínez-Laiz, Raquel Xavier, Lou Montelli, Razy Hoffman, Abir Fersi, Jean Claude Dauvin, José Manuel Guerra-García

Data type: phylogenetic tree

Explanation note: The tree was rooted with *Caprella danilevskii* and *Caprella liparotensis*.

Values at the nodes correspond to ML bootstrap support and Bayesian posterior probabilities, respectively. Numbers inside brackets indicate the corresponding haplotypes.

Copyright notice: This dataset is made available under the Open Database License (<http://opendatacommons.org/licenses/odbl/1.0/>). The Open Database License (ODbL) is a license agreement intended to allow users to freely share, modify, and use this Dataset while maintaining this same freedom for others, provided that the original source and author(s) are credited.

Link: <https://doi.org/10.3897/neobiota.47.32408.suppl2>

Supplementary material 3

Table S2. Uncorrected pairwise distances between mtDNA haplotypes

Authors: M. Pilar Cabezas, Macarena Ros, António Múrias dos Santos, Gemma Martínez-Laiz, Raquel Xavier, Lou Montelli, Razy Hoffman, Abir Fersi, Jean Claude Dauvin, José Manuel Guerra-García

Data type: molecular data

Explanation note: Percentage of average sequence divergence values (based on uncorrected p distances) between *Paracaprella pusilla*, *Paracaprella tenuis*, and the outgroups *Caprella liparotensis* and *Caprella danilevskii*. Distances equal or above 1% are depicted in bold.

Copyright notice: This dataset is made available under the Open Database License (<http://opendatacommons.org/licenses/odbl/1.0/>). The Open Database License (ODbL) is a license agreement intended to allow users to freely share, modify, and use this Dataset while maintaining this same freedom for others, provided that the original source and author(s) are credited.

Link: <https://doi.org/10.3897/neobiota.47.32408.sup13>

Supplementary material 4

Table S3. Changes in genetic variation in Cadiz marina (ESCAD) population over time

Authors: M. Pilar Cabezas, Macarena Ros, António Múrias dos Santos, Gemma Martínez-Laiz, Raquel Xavier, Lou Montelli, Razy Hoffman, Abir Fersi, Jean Claude Dauvin, José Manuel Guerra-García

Data type: molecular data

Explanation note: Year of collection, total number of individuals (N), individuals belonging to each haplotype (H1–H9), haplotype diversity (Hd) and nucleotide diversity (π) per year are shown.

Copyright notice: This dataset is made available under the Open Database License (<http://opendatacommons.org/licenses/odbl/1.0/>). The Open Database License (ODbL) is a license agreement intended to allow users to freely share, modify, and use this Dataset while maintaining this same freedom for others, provided that the original source and author(s) are credited.

Link: <https://doi.org/10.3897/neobiota.47.32408.sup14>

Supplementary material 5

Figure S2. Maximum likelihood tree of nuclear markers

Authors: M. Pilar Cabezas, Macarena Ros, António Múrias dos Santos, Gemma Martínez-Laiz, Raquel Xavier, Lou Montelli, Razy Hoffman, Abir Fersi, Jean Claude Dauvin, José Manuel Guerra-García

Data type: phylogenetic tree

Explanation note: **A** Phylogenetic tree of nuclear 28S rRNA. Unfortunately, this gene could not be amplified in *P. tenuis* species. In *P. pusilla*, only two haplotypes were detected, differing only by the presence of an indel. **B** Phylogenetic tree of nuclear ribosomal internal transcribed spacer (ITS). No variation was observed among *P. pusilla* sequences. Trees were rooted with *Caprella danilevskii* and *Caprella liparotensis*. Values at the nodes correspond to ML bootstrap support and Bayesian posterior probabilities, respectively.

Copyright notice: This dataset is made available under the Open Database License (<http://opendatacommons.org/licenses/odbl/1.0/>). The Open Database License (ODbL) is a license agreement intended to allow users to freely share, modify, and use this Dataset while maintaining this same freedom for others, provided that the original source and author(s) are credited.

Link: <https://doi.org/10.3897/neobiota.47.32408.suppl5>