



**HAL**  
open science

## Involvement of pectin methylesterases during pollen imbibition and germination

Christelle Leroux, Arnaud Lehner, Marie-Christine Kiefer-Meyer, Jérôme Pelloux, Azeddine A. Driouich, Patrice Lerouge, Jean-Claude Mollet

► **To cite this version:**

Christelle Leroux, Arnaud Lehner, Marie-Christine Kiefer-Meyer, Jérôme Pelloux, Azeddine A. Driouich, et al.. Involvement of pectin methylesterases during pollen imbibition and germination. 15<sup>ème</sup> Journées de l'Ecole Doctorale NBISE, Mar 2012, Mont-Saint-Aignan, France. hal-02082459

**HAL Id: hal-02082459**

**<https://normandie-univ.hal.science/hal-02082459v1>**

Submitted on 28 Mar 2019

**HAL** is a multi-disciplinary open access archive for the deposit and dissemination of scientific research documents, whether they are published or not. The documents may come from teaching and research institutions in France or abroad, or from public or private research centers.

L'archive ouverte pluridisciplinaire **HAL**, est destinée au dépôt et à la diffusion de documents scientifiques de niveau recherche, publiés ou non, émanant des établissements d'enseignement et de recherche français ou étrangers, des laboratoires publics ou privés.

# Involvement of pectin methylesterases during pollen imbibition and germination.

Leroux C<sup>a</sup>, Lehner A<sup>a</sup>, Kiefer-Meyer MC<sup>a</sup>, Pelloux J<sup>b</sup>, Driouich A<sup>a</sup>, Lerouge P<sup>a</sup> & Mollet JC<sup>a</sup>

<sup>a</sup> Laboratoire Glycobiologie et Matrice Extracellulaire Végétale, UPRES-EA 4358, PRIMACEN IBISA, IRIB, Université de Rouen, 76821 Mont Saint-Aignan Cedex, France.

<sup>b</sup> Biologie des Plantes et contrôle des Insectes ravageurs, UPRES-EA 3900, Université de Picardie-Jules Verne, 80039 Amiens, France.



1 During sexual plant reproduction, pollen germination and pollen tube elongation in the pistil are essential for delivering sperm cells to the ovule (Fig. 1).

Pollen grain contains two sperm cells and a vegetative cell limited from the outside to the inside, by the exine, the intine and the plasma membrane. The water influx permit the imbibition (Fig. 2a), before a calcium influx (Fig. 2b) which is localized at the future site of emergence of the tube (Fig. 2c).

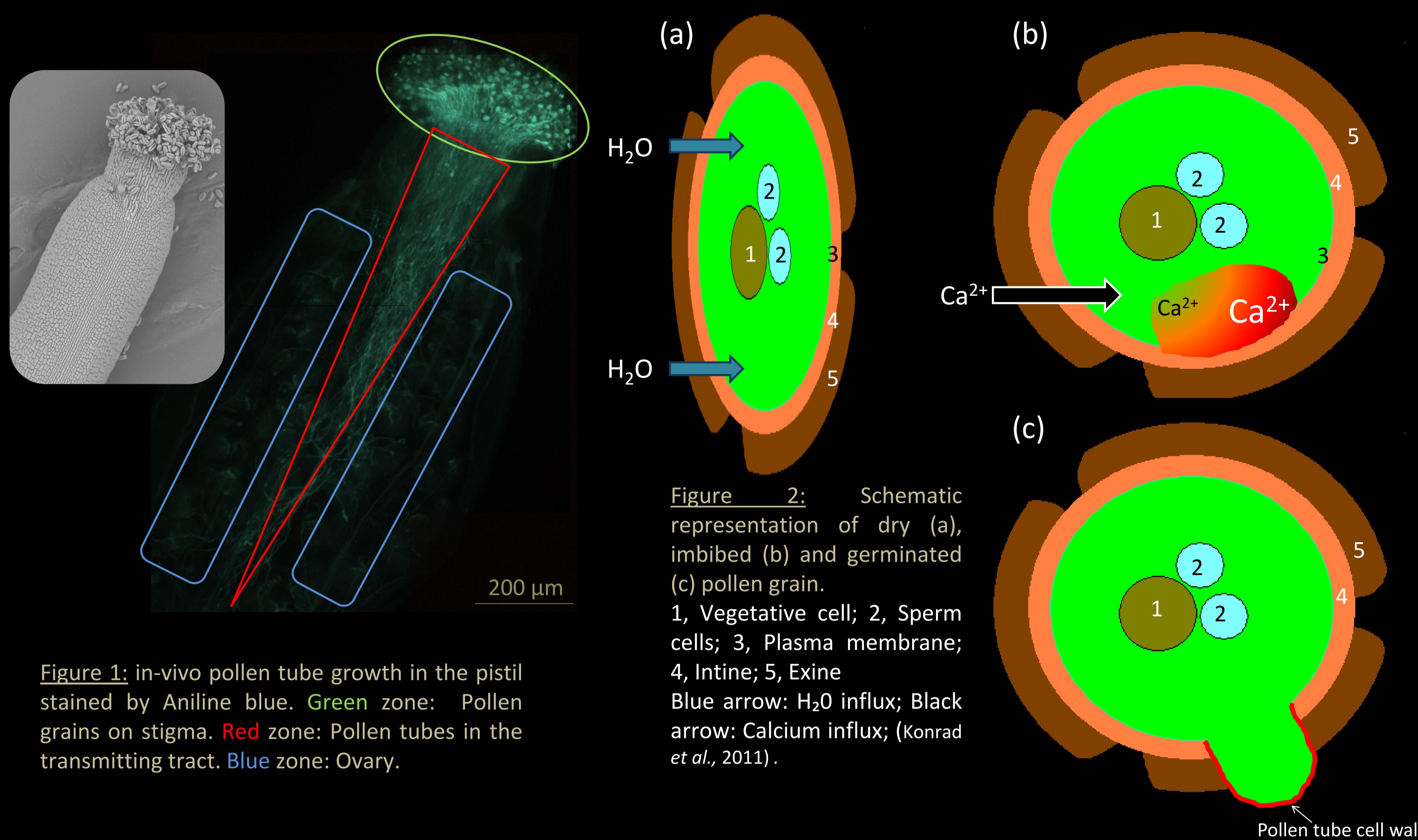


Figure 2: Schematic representation of dry (a), imbibed (b) and germinated (c) pollen grain. 1, Vegetative cell; 2, Sperm cells; 3, Plasma membrane; 4, Intine; 5, Exine. Blue arrow: H<sub>2</sub>O influx; Black arrow: Calcium influx; (Konrad et al., 2011).

Figure 1: in-vivo pollen tube growth in the pistil stained by Aniline blue. Green zone: Pollen grains on stigma. Red zone: Pollen tubes in the transmitting tract. Blue zone: Ovary.

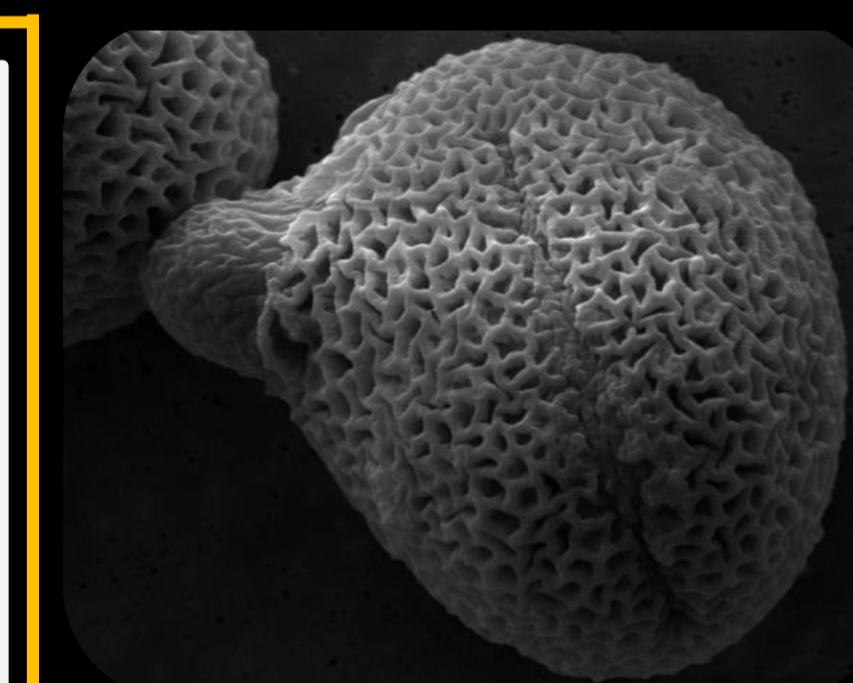
2 The intine is composed of complex polysaccharides including homogalacturonans (HGs) which are secreted in the cell wall in a highly methylesterified form.

Demethylesterification of HGs is catalyzed in the cell wall by pectin methylesterases (PMEs). Interestingly, more than 20% of Arabidopsis PMEs (14 among 66) are specifically expressed in pollen grain and pollen tube. Their expression is gene- and time- dependent (Fig. 3).

Locus	Name (UniProt)	Dry pollen	Pollen imbibed for 1h	6h-old Pollen tube
At1g69940	PPME 1, Group I			
At5g07410	PME 48, Group I			
At5g07420	PME 49, Group I			
At5g07430	PME 50, Group I			
At3g17060	PME 67, Group I			
At2g26450	PME 13, Group II			
At2g47030	PME 04, Group II			
At2g47040	PME 05, Group II			
At3g05610	PME 21, Group II			
At3g06830	PME 23, Group II			
At3g62170	PME 37, Group II			
At4g15980	PME 43, Group II			
At4g33230	PME 45, Group II			
At5g27870	PME 28, Group II			
At3g46520	ACT12			
At5g44340	TUB4			

Figure 3: RT-PCR detection of PMEs transcripts in wild type pollen grains, imbibed pollen grains and pollen tubes. Gene identities of RT-PCR products are indicated on the left. An equal amount of cDNA was amplified in each sample. ACT12 and TUB4 have been used as positive controls.

3 Two knock-out mutants impaired in two homologous PME (*ppme1* and *pme48*; Fig. 3) present a strong delay in pollen germination (not shown) and a remarkable phenotype with multiple pollen tube tips emerging from the grain (Fig. 4D).



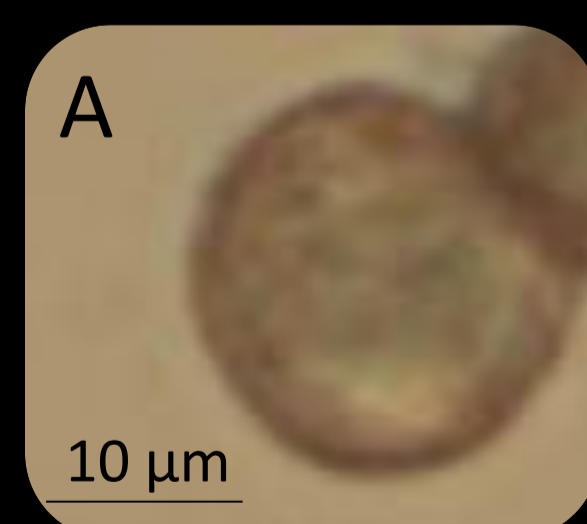
4 The possible implication of PMEs, HGs, calcium ions and polygalacturonases during pollen germination is presented Figure 4. It is based on the phenotypes of WT (A, B) or mutant (C, D) pollen grains observed during imbibition and pollen tube growth.

i) Random action of PME : The partially de-methylesterified HGs may become a target for pectin-degrading enzymes, such as polygalacturonases.

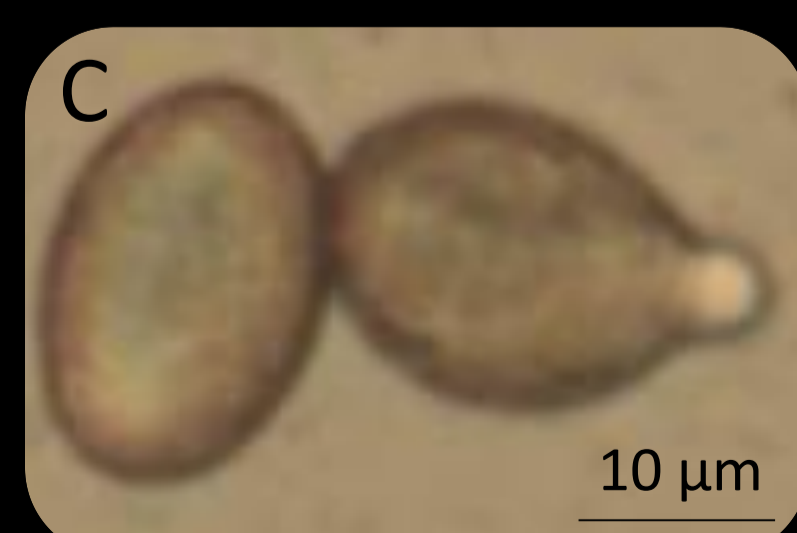
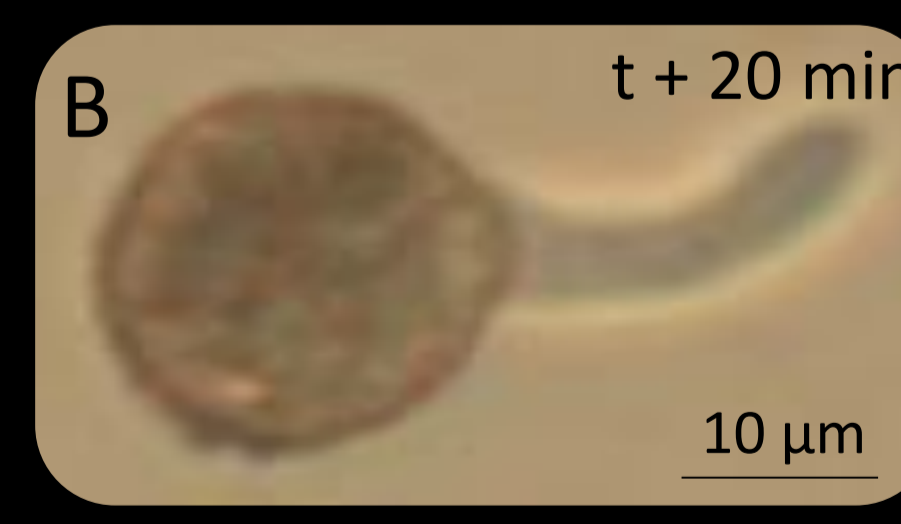
-> **Enzymatic degradation of the intine and mechanical rupture of the exine due to turgor pressure.**

ii) Block-wise action of the PME : The blocks of de-methylesterified HGs can interact with Ca<sup>2+</sup> promoting the formation of the "egg-box" structure and thus rigidifying the intine.

-> **Mechanical rupture of the intine and exine due to turgor pressure.**



**WT:** methylesterified HGs are hydrophobic. Upon the action of PME they become more hydrophilic.  
->the imbibition is fast in WT (A).  
-> PMEs are present, structure or mechanical properties of the intine are modified, the tube can emerge from the grain(B).



**Mutants:** methylesterified HGs are hydrophobic. De-methylesterification is perturbed.  
->the imbibition is slow (C).  
-> PME actions are reduced. Germination is perturbed : No germination (D, left grain) or abnormal germination with a first tube that fails to emerge and a second tube that takes over to ensure future fertilization (D, right grain)

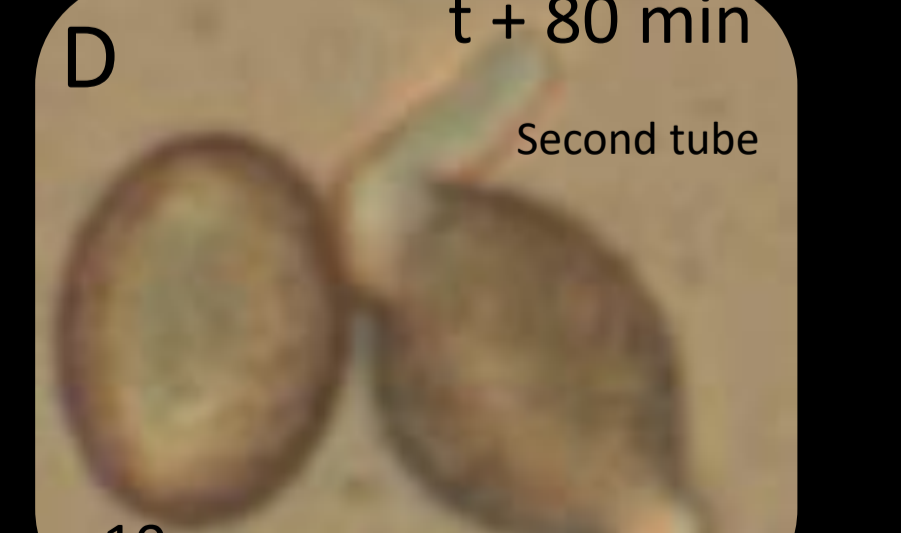
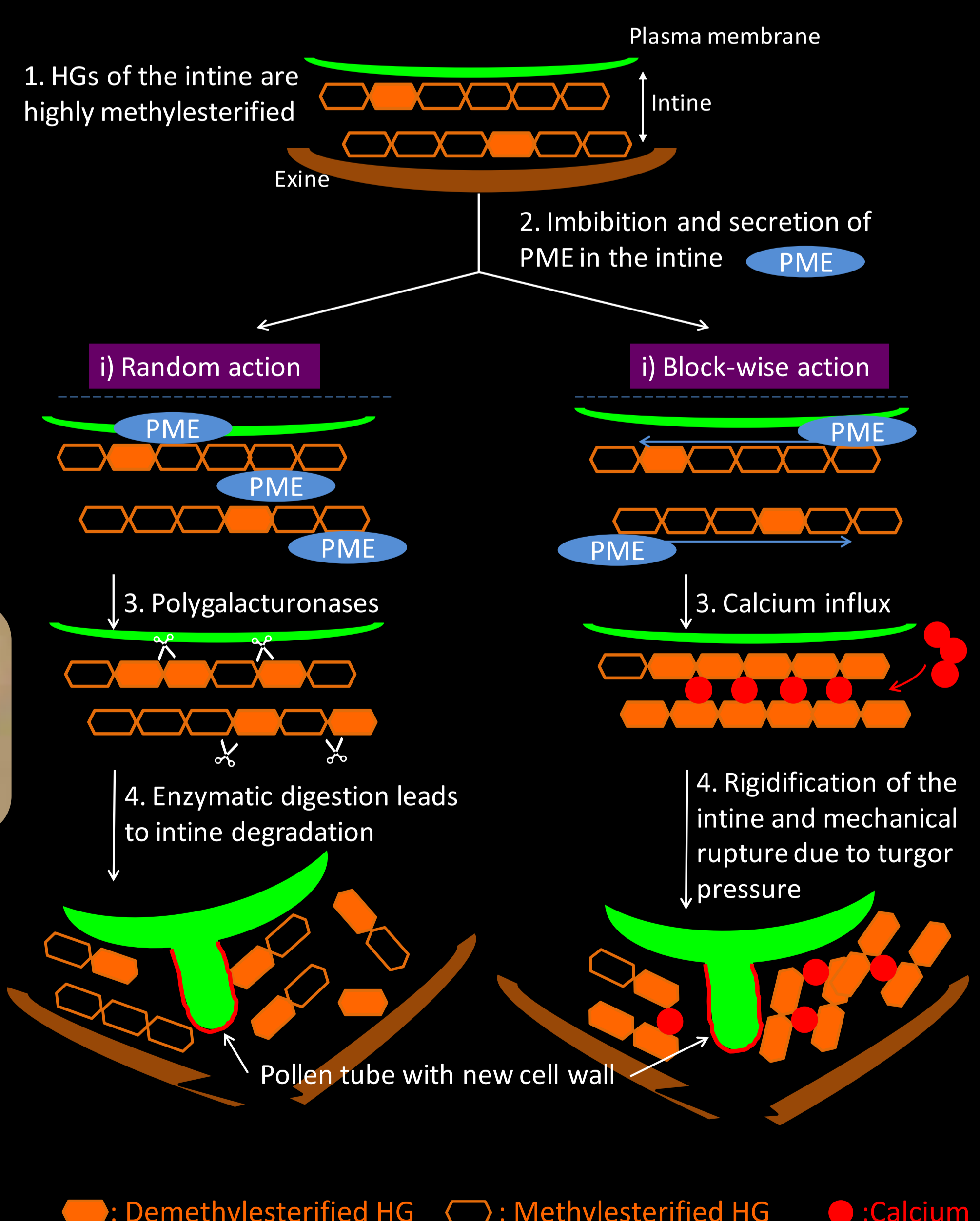


Fig 4: Theoretical model presenting the possible involvement of PME during pollen grain germination



**Enzymatic activity of PME appears to be essential during pollen germination by facilitating the rupture of the pollen grain wall and then the emergence of the pollen tube**