



**HAL**  
open science

## Pectin methylesterases and Arabidopsis pollen tube growth

Arnaud Lehner, Florian Païola, Romain R. Louvet, Jérôme Pelloux, Azeddine A. Driouich, Patrice Lerouge, Jean-Claude Mollet

► **To cite this version:**

Arnaud Lehner, Florian Païola, Romain R. Louvet, Jérôme Pelloux, Azeddine A. Driouich, et al.. Pectin methylesterases and Arabidopsis pollen tube growth. ASPB-CSPP Annual Plant Biology Meeting, Jul 2010, Montréal, Canada. hal-02081260

**HAL Id: hal-02081260**

**<https://normandie-univ.hal.science/hal-02081260v1>**

Submitted on 29 Mar 2019

**HAL** is a multi-disciplinary open access archive for the deposit and dissemination of scientific research documents, whether they are published or not. The documents may come from teaching and research institutions in France or abroad, or from public or private research centers.

L'archive ouverte pluridisciplinaire **HAL**, est destinée au dépôt et à la diffusion de documents scientifiques de niveau recherche, publiés ou non, émanant des établissements d'enseignement et de recherche français ou étrangers, des laboratoires publics ou privés.

# Pectin methylesterases and Arabidopsis pollen tube growth : case study of a pollen-specific PME mutant

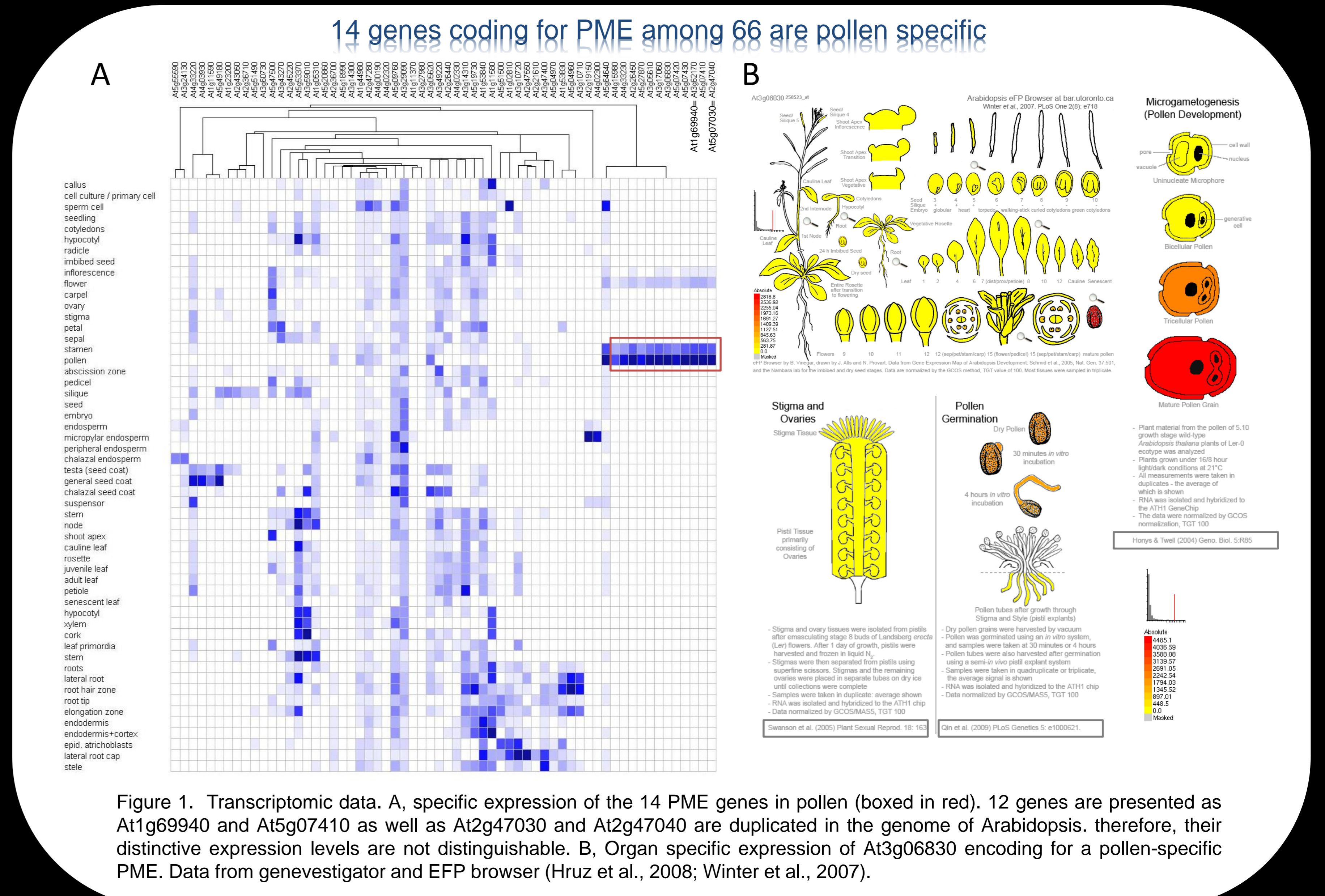
Arnaud Lehner<sup>1</sup>, Florian Païola<sup>1</sup>, Romain Louvet<sup>1</sup>, Jérôme Pelloux<sup>2</sup>, Azeddine Driouch<sup>1</sup>, Patrice Lerouge<sup>1</sup>, Jean-Claude Mollet<sup>1</sup>

<sup>1</sup>Laboratoire Glycobiologie et Matrice Extracellulaire Végétale, UPRES-EA 4358, PRIMACEN IBiSA, IFRMP 23, Université de Rouen, 76821 Mont Saint-Aignan Cedex, France.

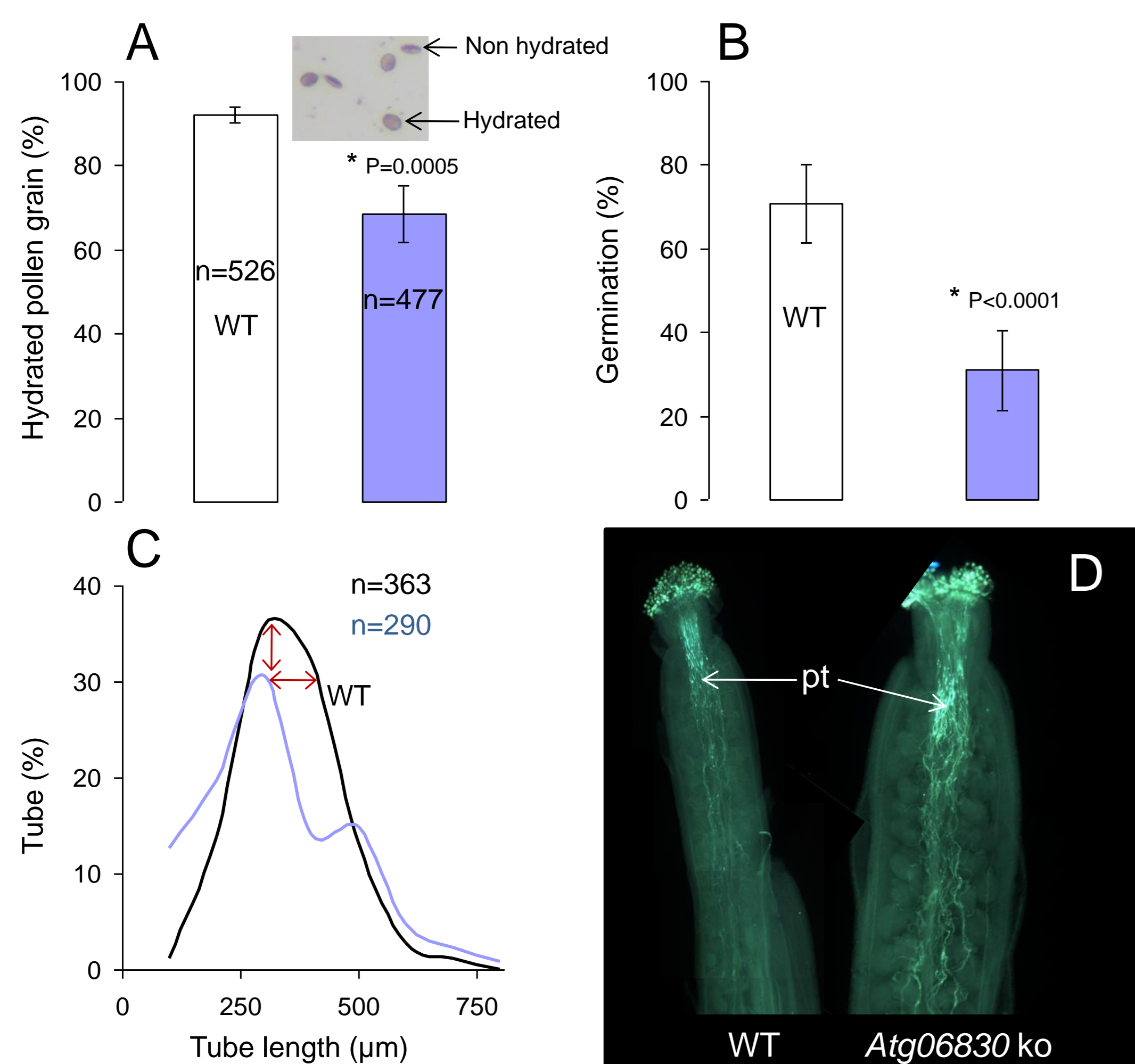
<sup>2</sup>Biologie des Plantes et contrôle des Insectes ravageurs, UPRES-EA 3900, Université de Picardie-Jules Verne, 80039 Amiens, France.

## Introduction

Little is known about the molecular mechanisms involved in the spatial and temporal controlled growth of the pollen tube through the female tissues. Variation of cell wall stiffness of the tube has been proposed to participate in tube growth. Such a variation in cell wall properties is likely to be related to the level of methylesterification of pectic homogalacturonans (HG). Modulation of the degree of HG methylester is regulated in the cell wall by the action of pectin methylesterases (PMEs). In Arabidopsis, putative PME proteins are encoded by a 66-member gene family. Among them, 14 PME transcripts are specifically expressed in pollen grain or pollen tubes (Fig. 1A), indicating that more than 20% of the Arabidopsis PMEs are dedicated to the male gametophyte. Using a pollen-specific PME (Fig. 1B) knock-out mutant (*At3g06830*), we investigated *in vitro* pollen tube growth and morphology, as well as the impact of this mutation on 1) the distribution of weakly and highly methylesterified HG epitopes in pollen tube cell wall and 2) on plant fertilization. Moreover, expression of GUS protein, under the control of *At3g06830* promoter, during tube growth is also presented.



## *At3g06830*-ko pollen is impaired in hydration and germination *in vitro*



## Results

**Hydration and germination rates:** 92% of the pollen grain harvested from the wild type flowers have rehydrated after 6h of culture, whereas 68 % of the pollen grains of the *At3g06830*-ko mutant were rehydrated (Fig. 2A). This difference of pollen grain hydration may explain the reduction of pollen germination rate in the *At3g06830*-ko mutant (Fig. 2B).

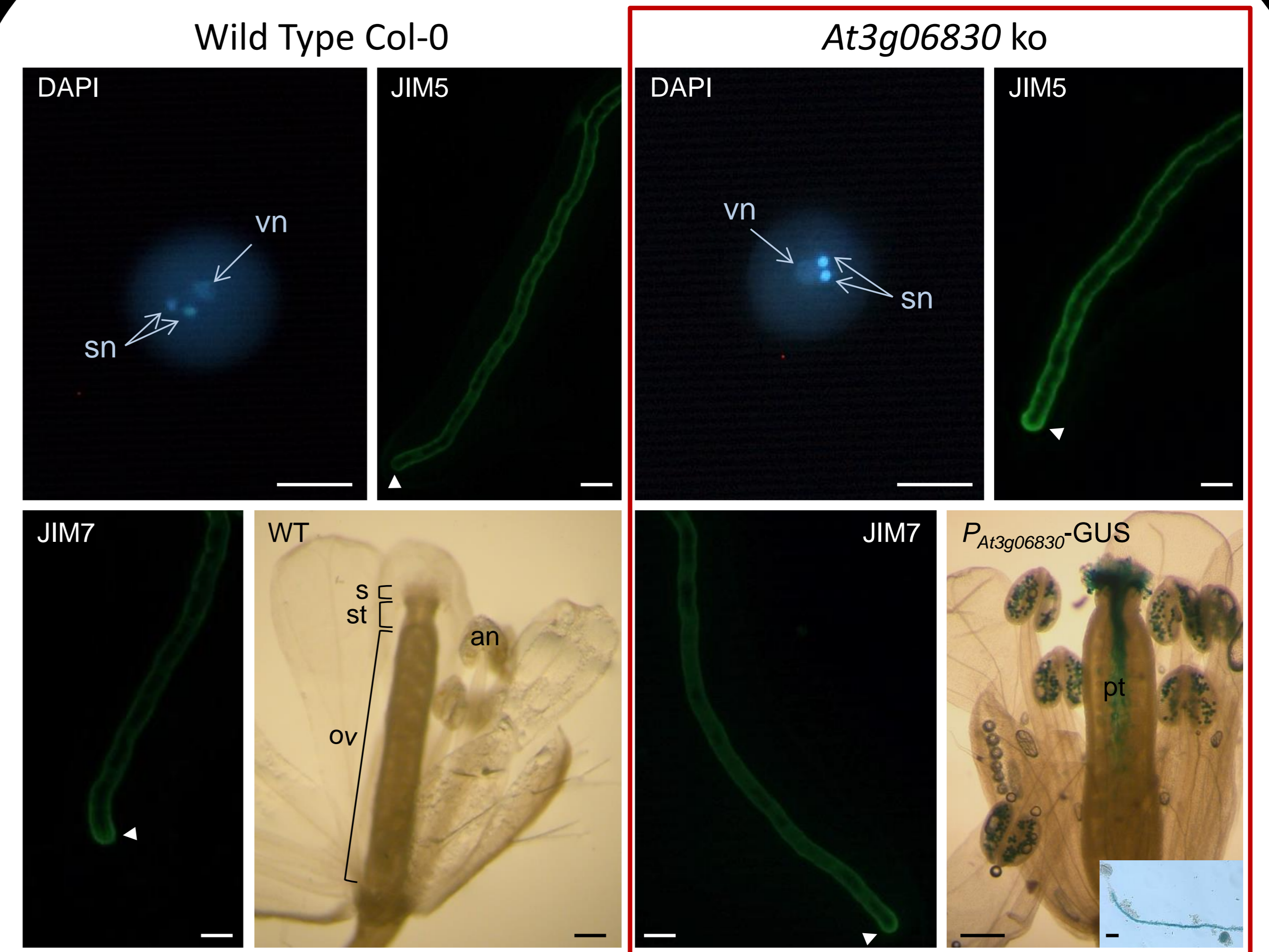
**Pollen tube length and fertilization :** *In vitro* pollen tubes of the mutant are shorter compare to the WT (Fig. 2C). *In vivo*, WT and *At3g06830*-ko pollen tubes were able to fertilize all the ovules (Fig. 2D).

**Dapi, JIM5 and JIM7 staining:** The two sperm nuclei and the vegetative nucleus were stained in both WT and *At3g06830*-ko mutant pollen grain. Weakly methylesterified HG were labeled back from the tip in WT pollen tube. In contrast, labeling with JIM5 was very strong at the tip of the mutant pollen tube (Fig. 3). JIM7 labeling may extend further back from the tip in the mutant compare to the WT.

**GUS staining :** The expression of *At3g06830* has been localized using GUS construction (Fig. 3). GUS staining showed a pollen grain- and pollen tube- specific expression. Expression was not found in any other part of the plant.

## Conclusions

- Pollen grains of *At3g06830*-ko are clearly affected in their capacity to rehydrate *in vitro*.
- The distribution of Highly methylesterified HG seems to be more widely extended in the mutant suggesting that the mutation may have reduced the demethylesterification process.
- *At3g06830* is specifically expressed in pollen grain and in pollen tube (*in vitro* and *in vivo*).



## References :

- Hruz T, Laule O, Szabo G, Wessendorp F, Bleuler S, et al. 2008 Geneinvestigator V3: a reference expression database for the meta-analysis of transcriptomes. *Advances in Bioinformatics* 420747
- Winter D, Vinegar B, Nahal H, Ammar R, Wilson GV, et al. 2007 An "Electronic Fluorescent Pictograph" Browser for Exploring and Analyzing Large-Scale Biological Data Sets. *PLoS ONE* 2(8): e78

